

KEEP ME

2 Dec 2021 – 30 April 2022



**EVENTS
GUIDE**

 **Nelson City Council**
Te Kaunihera o Whakatū

 **tasman** | Te Kaunihera o
district council | **te tai o Aorere**

WELCOME TO SUMMER



Nau mai, haere mai, welcome

Summer is the time the Nelson Tasman region shines brightest. Our stunning weather and landscape mean there are few better places to be, and this year's Summer Events Guide is full of the best entertainment and activities the region has on offer.

Many of our favourite markets and family friendly events have returned after a year away; gather up the kids and their most treasured stuffed toy and enjoy the Teddy Bears' Picnic, take in the varied talents of the Buskers Festival, and marvel at the soaring sounds of Opera in the Park.

Enjoy the warm evenings with Summer Movies al Fresco and set your summer anthem with one of our music events.

Nelson Mayor Rachel Reese and Tasman Mayor Tim King

In Tasman, you can bag a bargain at the famous Richmond Market Day. Motueka Kai Fest offers a range of unique culinary treats, or for activities of a more rural flavour, head to the Murchison A&P Show.

The events in the guide have been designed to be enjoyed safely, but please check the COVID-19 Alert Level restrictions and the event listings online for any updates before you head out.

Everything you need to celebrate summer is here in this guide, brought to you by Nelson City and Tasman District Councils, with the generous support of our sponsors.

Mark your favourite events and make time to get out and enjoy all our beautiful region has to offer.

BROUGHT TO YOU BY



Please see page 4 for important information.



MAP

 = Locations of summer events

Using this guide

This guide has two listing sections. Events listed in the front half receive extra support from the Councils. A more comprehensive list of events in the region is at the back. We aim to include as many events as possible from the It's On website, however space limitations mean we unfortunately cannot include every event.

GOLDEN BAY

KAHURANGI NATIONAL PARK

ABEL TASMAN NATIONAL PARK

NELSON CITY

RICHMOND

NELSON LAKES NATIONAL PARK

Collingwood

Tata Beach

Tākaka

60

Riwaka

Kaiteriteri Beach

Motueka

Tāhunanui Beach

Māpua

Rabbit Island

Upper Moutere

Stoke

Tapawera

Brightwater
Wakefield

6

St Arnaud

63

Murchison

Driving times

Nelson to Tākaka
104km, 1 hour 46 minutes

Nelson to Murchison
124km, 1 hour 39 minutes



IMPORTANT INFORMATION

Given the unpredictability of COVID-19 restrictions, PLEASE check the It's On website – [itson.co.nz](https://www.itson.co.nz) – or the **Nelson City Presents Facebook page** prior to attending an event to ensure timings and locations are still the same as published.

The six key Nelson City Council events have a specific Summer Events QR code which contains updated information for those events only.
*To scan the code you need to download the QR Reader app.
This is NOT the same as the NZ COVID Tracer app.*



In order to manage health and safety risks and ensure compliance with the Health and Safety at Work Act for upcoming summer events, the Councils require all people attending to follow all instructions and rules (including signage) given to them for the particular event. In addition, you must at all times take reasonable care of your own and your family's health and safety and not do anything or omit to do anything that adversely affects the health and safety of others. This includes following government COVID-19 hygiene, mask-wearing, contact tracing and mandatory alert level requirements. Please also stay away if you are sick or have cold or flu symptoms. Note that the COVID-19 situation may change quickly, and we may need to amend our admission procedures at short notice to comply with Government requirements. People under the age of 13 must have parental supervision. At the time of printing, every effort has been made to ensure that the details in this Summer Events Guide are correct. We accept no responsibility for errors or omissions. For up-to-date event information, go to [itson.co.nz](https://www.itson.co.nz) or check individual event websites.



LOCAL MARKETS

Nelson Market

Saturdays, 8am – 1pm //
Montgomery Square, Nelson

Monty's Market

Sundays, 8am – 1pm //
Montgomery Square, Nelson

Motueka Sunday Market

Sundays, 8am – 1pm //
Decks Reserve Carpark, Motueka

All markets subject to COVID-19 restrictions.

Nelson Farmers Market

Wednesdays, 8.30am – 1.30pm //
Halifax Street, Nelson

Isel Twilight Market

Thursdays, 4.30pm – dark //
Isel Park, Stoke

Village Market Tākaka

Saturdays, 9am – 1.30pm //
Tākaka Library Carpark



CHRISTMAS EVENTS

CAROLS

Nelson Christmas Concert

Sun 5 Dec, 2pm // Christ Church Cathedral, Nelson // Adults \$20, under 18 \$5

With the Nelson Male Voice Choir.

Carols in the Park

Fri 10 Dec, 5pm–8pm // Brightwater Domain // FREE

Carols at Isel Park

Thu 16 Dec, 6pm // Isel Park Market, Stoke // FREE

Carols by Truck-light

Sun 19 Dec, from 6pm // Richmond // FREE

Carols by Candlelight is cancelled this year so we are bringing the Christmas spirit to you. A carols truck and Santa will be spreading the Christmas joy throughout Richmond neighbourhoods.

Bring the Cheer Christmas Extravaganza

Fri 24 Dec, 4pm–7pm // Rec Park Centre, 2032 Tākaka Valley Highway, Tākaka // Koha

Carols on the Cathedral Steps

Fri 24 Dec, 8.45pm // Church Steps, top of Trafalgar Street, Nelson // FREE



PARADES

NBS Nelson Santa Parade

Sun 12 Dec, 1pm // Trafalgar Street, Nelson // FREE

Golden Bay Santa Parade

Sat 18 Dec, 10am // Commercial Street, Tākaka // FREE

OTHER

Cathedral Festival of Christmas Trees

Fri 26 Nov–Sun 16 Jan // 'Switch On' service Fri 26 Nov at 6pm, 'Switch Off' service Sun 16 Jan at 10am // Christ Church Cathedral, Nelson // FREE

Country Christmas Market

Sat 4 Dec, 10.30am–3pm // Moutere Hills Community Centre, Upper Moutere // FREE

Santa's Grottos

Fri 10 Dec, 3.30pm–4.30pm, Stoke Library // FREE

Sat 11 Dec, 11am–12pm, Elma Turner Library, Nelson // FREE



KIDS' EVENTS

Umbrella Market

Sat 4 Dec & Sat 11 Dec, 10am–12pm // 1903 Square, top of Trafalgar Street, Nelson // FREE to have a stall

Children aged 8–16 years are invited to sell their unwanted goods in the lead-up to Christmas. Each child brings a standard rain umbrella which, upside-down, becomes their 'stall' in which to place the goods for sale. Parents may be in attendance, but the children do the selling, learn about money and its value, negotiating skills, appreciation of what others can afford to pay for a product, gain confidence in interactions and discover one of the best things about recycling – passing on the joy of an item when you have finished with it!

Scan the QR code for this event's information (not for attendance recording).



New World Teddy Bears' Picnic

Sun 19 Dec, 10am–1pm // Motueka Recreation Centre // FREE

Bring your favourite teddy and a picnic lunch to this free family event aimed at the younger age group. Ride-ons, face painting, crafts, balloons and, if you've been good, Santa might be visiting!

Teddy Bears' Picnic

Sun 16 Jan, 10am–1pm // Fairfield House Meadow, Nelson // FREE

The big day out for the teddy bears is here! Featuring a red carpet bear walk where the best dressed bear wins a prize, Flossie balloons, Kath Bee singing, Akiko puppet show, garden games, Birdlife Productions puppet theatre and plenty more on offer for young and old teddies (and their humans) to enjoy. Bring a picnic, hat and sunscreen. Wheelchair access.

Book your free tickets on Eventfinda so we can keep track of numbers.

Please pack it in, pack it out and keep our parks beautiful!

Cancelled if wet. Scan the QR code for this event's information (not for attendance recording).



Children's Day

Sun 6 Mar, 10am–2pm // Richmond Aquatic Centre // Gold coin entry into the pools, other activities FREE

Enjoy the fun-filled pools for a gold coin or the outdoor activities including bouncy castles, balloon twisting, live music, obstacle courses and more.



NEW YEAR'S EVE IN THE CENTRAL CITY

Fri 31 Dec // Nelson city

This year sees a change in format with live entertainment at several venues until midnight, so we can all still come into the city and enjoy a fun New Year's with friends and family. Updates of acts and venues are available on the Nelson City Presents Facebook page or scan the QR code for New Year's venue and music information (*not for attendance recording*).



SOUNDS BY THE SEA

Fri 14 Jan, 6pm–8pm // Tāhunanui Beach Reserve, then Upper Trafalgar Street, Nelson // FREE

The Voice Collective performs an 'impromptu' 40-minute open air concert on their mobile stage.

Fri 21 Jan, 6pm–8pm // The Honest Lawyer, Monaco Point, Stoke // FREE

A family evening of music, mischief and magic by the water so you can kick back, relax and enjoy the sounds of summer as the sun sets. A small troupe of travelling actors performs Shakespeare's *A Midsummer Night's Dream* like you've never seen it before. It's a Barden Party – raucous, rocking and hilarious! Food will be available for purchase on site.

Scan for this event's information (*not for attendance recording*).



The Barden Party

SUMMER MOVIES AL FRESCO

Wed 5 Jan – Sun 6 Feb, 9pm–11pm
(movies start at dusk) // \$2 adult,
\$1 child

A great collection of movies screened in parks from Nelson to Tapawera to Tākaka. Join us in costume inspired by Día de los Muertos (Day of the Dead) for the screening of *Coco*, enjoy new venues and experiences in collaboration with Whakatū Riding for the Disabled (RDA) and Te Awhina Marae, and come down early to the Isel Twilight Market each Thursday to browse great food and craft stalls.

Pack a picnic and gather the whole whānau for two free screenings during Nelson Anniversary weekend – Fri 28 Jan at Stoke Youth Skate Park and Sat 29 Jan at Maara Wheke/Octopus's Garden.

Some screenings will be shown with English subtitles (**S** on schedule) for the deaf, hard of hearing or English as a second language viewers. Most parks are flat and grassy with accessible toilets, except Fairfield Park.

If it looks like rain, please text 'Is it on?' to 021 776 623 **after** 7.30pm on the night.

We ask that you stay in your 'social bubble' at the movie with a one metre spacing from the next 'social bubble'. On this basis we can have up to 100 bubbles at each screening. For latest programme details scan this QR code (not for attendance recording).

**Please pack it in,
pack it out and keep
our parks beautiful!**



MOVIES

Willy Wonka & the Chocolate Factory

1971 // 100 mins // G // After being closed to the world for many years, Willy Wonka's chocolate factory opens up to five lucky children who have found the prized golden tickets hidden in selected Wonka Bars. Starring Gene Wilder as the eccentric Willy Wonka, based on the classic children's book by Roald Dahl.

National Velvet

1944 // 123 mins // G // An inspiring and heart-warming tale of a girl's passion for horses and her dream, despite her gender, to race in The Grand National. Starring Elizabeth Taylor and Mickey Rooney.

On Sun 16 Jan come dressed to theme from 6pm for a BBQ fundraiser dinner at Whakatū Riding for the Disabled in The Brook. Meet the horses and take part in fun horse-themed activities with prizes up for grabs.

The World's Fastest Indian

2005 // 127 mins // PG // A classic kiwi tale of backyard ingenuity and number 8 wire solutions, both hilarious and profound. Follow the tale of New Zealander Burt Munro who spent years rebuilding a 1920 Indian motorcycle, with which he went on to set a land speed world record at Utah's Bonneville Salt Flats in 1967. Based on one hell of a true story, starring Anthony Hopkins.



Hunt for the Wilderpeople

2016 // 101 mins // PG // Ricky (Julian Dennison) is fostered by Bella (Rima Te Wiata) and Hector (Sam Neill) but all does not go to plan and Ricky and Hector end up the subjects of a national manhunt. A wonderful mix of heart and hilarity, kiwi style!

The Parent Trap

1961 // 129 mins // G // Identical twins Susan and Sharon (both played by Hayley Mills) discover each other's existence when they meet at summer camp. They hatch a plan to switch places in a bid to reunite their estranged parents. A hilarious and heart-warming look at family life.

Coco

2017 // 105 mins // PG // Miguel (Anthony Gonzalez) dreams of being a musician but any form of music is banned in his family. He rebels and via the magic of Día de los Muertos (Day of the Dead) he finds himself in the Land of the Dead. *Come in costume inspired by Día de los Muertos, enjoy music and kids' activities from 6.30pm.*

Moana

2016 // 107 mins // PG // Moana Waialiki has been drawn to the sea all her life without knowing why. As the only daughter of the chief, she is expected to lead her people, but the sea continues to call, and Moana sets off on an epic journey across the Pacific.

Guess Who's Coming to Dinner

1967 // 108 mins // PG // Sidney Poitier, Katharine Hepburn and Spencer Tracey make this exploration of race and liberal views a real treat of cinema. Joey brings home the ideal son-in-law – except that he is black. Much humour and pathos ensue as the families come to terms with the choices of their children.

James and Isey

2021 // 91 mins // M // In the lead up to Isey's 100th birthday we get a look into a real life being lived in rural New Zealand. Heart warming, tender and funny. An absolute gem of a film for this Waitangi Day screening at Te Awhina Marae. *Pōwhiri at 3pm followed by market and kapa haka until 8pm.*

SCHEDULE

Wed 5 Jan // Willy Wonka and the Chocolate Factory // Tāhuna Beach Holiday Park

Thu 6 Jan // National Velvet // Isel Park, Stoke

Fri 7 Jan // The World's Fastest Indian // Washbourn Gardens, Richmond **S**

Sat 8 Jan // Guess Who's Coming to Dinner // Fairfield Park, Nelson

Sun 9 Jan // International Jam Pot at 7.30pm, then The World's Fastest Indian at 9pm // Village Theatre and Junction Green, Tākaka (small charge applies)

Wed 12 Jan // National Velvet // Tāhuna Beach Holiday Park

Thu 13 Jan // The Parent Trap // Isel Park, Stoke **S**

Fri 14 Jan // Coco // Washbourn Gardens, Richmond

Sat 15 Jan // Willy Wonka and the Chocolate Factory // Fairfield Park, Nelson **S**

Sun 16 Jan // National Velvet // Whakatū RDA, Tantragee Road, Nelson // Activities from 6pm **S**

Thu 20 Jan // Guess Who's Coming to Dinner // Isel Park, Stoke **S**

Fri 21 Jan // Willy Wonka and the Chocolate Factory // Tapawera Recreation Reserve

Sat 22 Jan // The World's Fastest Indian // Fairfield Park, Nelson

Sun 23 Jan // The Parent Trap // Washbourn Gardens, Richmond

Fri 28 Jan // Hunt for the Wilderpeople // Stoke Youth Skate Park // **FREE**

Sat 29 Jan // Moana // Maara Wheke / Octopus's Garden, Stoke // **FREE**

Sat 5 Feb // Moana // Victory Square, Nelson

Sun 6 Feb // James and Isey // Te Awhina Marae, Pah Street, Motueka // Pōwhiri at 3pm, then market and kapa haka until 8pm



NELSON BUSKERS FESTIVAL

FRI 28 – MON 31 JAN



NEW LOCATION

All the family-friendly busking awesomeness will be contained at Founders Heritage Park this summer with day and twilight performances.

Nelson Buskers Festival brings some of New Zealand's best street performers to our vibrant region for four days of extraordinary shows, amazing us with acrobatics, contortion, clowning, comedy and, of course, juggling.

Day and twilight performances are free to attend, although do bring some cash to show your appreciation for the amazing skills of these talented and hard-working performers. Buskers at the Boathouse is a ticketed event, and R18.

The 2022 festival performers include:

Betty's World Christchurch

It's adventure time! Betty's fed up trying to fit into this world, so she's created her own quirky, hilarious world full of magic, mind reading, circus and fearless cycling.

Vinyl Burns Wellington

Claiming to be a hit in 1972, Vinyl's show business career has dwindled. While not quite the style icon he believes himself to be, the charm of his comedy, improv and slapstick stunts cannot be denied.

Zaktacular Auckland

Specialising in the Cyr wheel, hand-balancing and club juggling, Zaktacular is an amazing stunt show full of juggling, hoop and handstand acrobatics. Voted 2018 Peoples' Choice Award at the Ferrara Buskers Festival (Italy) and winner of Germany's Kultur auf der Strasse (Culture in the Street) in Neu Ulm in 2019.



Buskers at Founders

DAY SHOWS Fri 28 Jan–Mon 31 Jan,
11am–2.30pm daily // Founders
Heritage Park, Atawhai Drive,
Nelson // Koha

Founders Heritage Park comes alive with the best New Zealand-based buskers, returning to Nelson to entertain with amazing skills. Bring the whole family and experience acrobatics, juggling, clowning, Cyr wheel and much more. Each busker performs their full act during the day. Enjoy an irresistible summer-fun combination of extraordinary entertainment and refreshment options from the Heritage Park vendors (or bring a picnic). Remember your sun hat and some cash to reward these amazing artists!

EVENING SHOWS Sat 29 & Sun 30 Jan,
6pm // Founders Heritage Park,
Atawhai Drive, Nelson // Koha

Two stunning evening variety shows for the whole family, featuring highlights from the whole festival. Come and see some of New Zealand's very best buskers perform an incredible show in the early evening sunshine. Unbelievable skills and great comedy to delight everyone. Bring sun hats, blankets and cushions, plus some cash for the talented performers!



Buskers at the Boathouse

R18 (content can be unpredictable)

**Fri 28 Jan, 8pm–10pm // The Boathouse,
326 Wakefield Quay, Nelson //**
Pre-sales \$30, door sales \$37.50
(plus Eventfinda service fee)

When buskers go bad! The performers from Nelson Buskers Festival present and adult only cabaret show. Amazing skills, big laughs and a little bit of sauce! Come along to the Boathouse to see another side of these extraordinary performers as they present some more risqué material.

Tickets on sale at eventfinda.co.nz or call 0800 289 849, the Theatre Royal Nelson and i-SITE (additional fees may apply).



**Follow and like the Nelson Buskers
Festival Facebook page for the latest
updates on acts, alternative wet
weather venues, etc.**

Scan for this event's
information (not for
attendance recording).



Betty's World

COMMUNITY & CULTURE



Tāhuna Summer Beach Bus

Mon 27 Dec – Mon 31 Jan, four times a day // \$3.50 adult, \$1 child (multi-ride tickets available)

A double-decker bus running regularly throughout the day between Tāhuna Beach Holiday Park, Tāhunanui Beach Reserve and Nelson City i-SITE. See itson.co.nz.

Richmond Market Day

Thu 30 Dec, 9am–3pm // Queen Street, Richmond // FREE

Shopping, fun and entertainment for all the family at the biggest market in the Top of the South! Market stalls line Queen Street along with fun entertainment such as face painting, buskers, bouncy castle, stilt walkers, magicians and more.

Riwaka Market Day

Sun 2 Jan, 9am–3pm // Riwaka Domain, Corner of School Road and State Highway 60

A friendly market organised by members of the Motueka Pottery Workshop. Children enjoy clay play while the pottery group's famous lucky dip features prizes of all handmade pottery items and the club stall offers great bargains, plus seasonal produce and refreshments.

Wakefield Country Fête

Sun 2 Jan, 9am–2.30pm // Wakefield Village Hall & Green // FREE

The oldest annual craft and food market in the region, celebrating 42 years.

Higgins Heritage Park Annual Community Craft Fair and Steam-Up

Sun 2 Jan, 9am–3pm // Higgins Heritage Park, Wakefield // Koha

Enjoy this 'family' of museums packed into one location with a large variety of exhibits. Featuring local entertainers, scrumptious food and a fantastic array of local and regional craft stalls.





Nelson Jazz Festival

Thu 6–Sun 9 Jan // Various locations // Some ticketed, some FREE

Four days of outstanding jazz played at some of the most beautiful locations around Nelson and Tasman, including street performances, indoor and outdoor venues, and afternoon and evening concerts.

Lunchtime Concerts on Sundial

Fri 14 Jan–Fri 11 Feb, 12pm // Sundial Square, Richmond // FREE

Grab your lunch and enjoy performances from around the world.

Taste Tasman – Beer, Cider and Food Festival

Sat 15 Jan, 1pm–9pm // Rutherford Park, Nelson // Earlybird \$39, general admission \$49, VIP \$99 (+ booking fees)

Tasman's newest beer, food and cider festival is coming to Nelson! Featuring many of Tasman's fine eateries and nationally recognised breweries plus an exciting line-up of entertainment from around New Zealand, including Jordan Luck and Raw Collective. **R18.**

Nelson Annual Kite Festival

Sat 22 & Sun 23 Jan, 12pm–5pm // Neale Park, Nelson

Kite-fliers from all over come to fly their kite creations over Neale Park. Enjoy the kites as well as buggy rides, drink vendors, face painting, balloon twisting and a kite stall.

International Kai Festival

Mon 7 Feb, 10.30am–3.30pm // Founders Heritage Park and Whakatū Marae, Nelson // Koha

Share a variety of food (priced to encourage lots of sampling) and celebrate our diverse Nelson communities.

Nitro Circus

Fri 11 Feb // Trafalgar Park, Nelson // Tickets from nitrocircus.com

Pushing the limits and breaking boundaries in action sports, Nitro Circus gives an experience like no other, featuring the best athletes in FMX, BMX, scooter, skate, and every other contraption you can think of.

Tasman Asian Night Food Fair

Sat 12 Feb, 4pm–9pm // Washbourn Gardens, Richmond // FREE entry

Celebrating cultural diversity with Asian food and entertainment – a wonderful opportunity to learn about other cultures. Unity in diversity!

If wet, the event will be rescheduled to Sat 19 Feb.

Motueka Kai Fest

Sun 13 Feb, 10am–6pm // Goodman Reserve, Motueka // \$2 entry, under 5 FREE

Motueka grows great food thanks to outstanding water, soil, climate and people, and the Kai Fest brings together our community of many cultures to honour this. There will be lots of kai with local and international flavours, local bands and performances, games, workshops and a cook off competition.





China Week

Thu 17 & Fri 18 Feb // Trafalgar Centre, Paru Paru Road, Nelson // FREE

Bringing together an exciting array of activities, exhibitions, performances and business talks to celebrate and promote cross-cultural relationships and connectivity.

Murchison A&P Show

Sat 19 Feb // Murchison Sport, Recreation and Cultural Centre and Domain // Adult \$10, family \$20, under 5 FREE

Come and celebrate the 100th year! All the fun of the show – trade, horses, flower show, baking competition plus other entertainment.

Multicultural Festival

Sun 20 Mar, 11am–4pm // Founders Heritage Park, Nelson // FREE

We invite you to celebrate cultural diversity, unity and peace with us! Nelson is home to people from all over the world, in fact we're the third most ethnically diverse community in New Zealand. The annual Multicultural Festival celebrates our region's diversity with a kaleidoscope of delicious food and brilliant entertainment.



MarchFest

Sat 26 Mar, 12pm–9.30pm // Founders Heritage Park, Nelson // Tickets on sale now from marchfest.com

Unlike most beer festivals, all the beers available at MarchFest have been specially commissioned for the event and have never previously been tasted by the public. Great live music as well as local wines, award-winning ciders, non-alcoholic beverages and regional cuisine.

Nelson Fringe Festival

Thu 31 Mar–Sat 9 Apr // Various venues, Nelson

Featuring performances across a range of styles including theatre, comedy, dance, improvisation, music, burlesque and circus as well as workshops and 'scratch night' development. Enjoy award-winning productions alongside new work from across Aotearoa.

Tuku 22 Heritage Month Whakatū

Fri 1–Sat 30 Apr // Various locations // Some events are FREE, some ticketed

Nelson's unique stories, people and places celebrated by multiple community groups and organisations, hosting their own events, shows, talks and adventures.



Positive Ageing Expo

Fri 8 Apr, 10am–3pm // Headingly Centre, Richmond // FREE

An expo to provide information and advice for those who are heading towards retirement. More than 80 stallholders along with seminars, demonstrations and a chance to have a go at a range of activities, as well as getting quick health checks.



FREE

PARKS PROGRAMME



Family Picnic

Load up the whānau and a picnic and join us for fun outdoor games and activities to enjoy at your own leisure.

Sun 9 Jan, 10am–12pm // Ranui Park, Stoke // Entrance off Ranui Road

Amazing Race

Weave your way through nature as you complete the challenges to make it to the end. This event can be done as an individual, with friends or as a family.

Tue 11 Jan, 10am–12pm // Centre of New Zealand (Botanical Reserve), Nelson // Meet at entrance to walkway

Fri 14 Jan, 10am–12pm // Easby Park, Richmond // Meet by playground

Fri 21 Jan, 10am–12pm // Queens Gardens, Nelson // Meet at the fountain in the park

Tue 25 Jan, 10am–12pm // Washbourn Gardens, Richmond // Meet by stage area

Wed 26 Jan, 10am–12pm // Isel Park, Stoke // Meet in front of Isel House

Treasure Hunt

Enjoy the chance to explore some of the region's loveliest locations while following a fun treasure hunt the whole family can enjoy.

Thu 6 Jan, 10am–12pm // Murphy Street Reserve, Nelson // Meet at the bottom of the stairs below Murphy Street signage

Fri 7 Jan, 10am–12pm // Bill Wilkes Reserve, Richmond // Meet by bridge at entrance to reserve

Thu 13 Jan, 10am–12pm // Queens Gardens, Nelson // Meet at the fountain in the park

Wed 19 Jan, 10am–12pm // Miyazu Japanese Gardens, Nelson // Meet at pond-side pavilion

Fri 28 Jan, 10am–12pm // Centre of New Zealand (Botanical Reserve), Nelson // Meet at entrance to walkway

Art in the Park

Let the beauty of the surrounds inspire your artistic skills and bring out your creative flair, then top it off with a picnic for the whole family.

Mon 17 Jan, 10am–12pm // Isel Park, Stoke // Meet in front of Isel House

Thu 20 Jan, 10am–12pm // Washbourn Gardens, Richmond // Meet by stage area

Mon 24 Jan, 10am–12pm // Centennial Park, Tāhunanui



SPORT AND RECREATION



Sport Tasman's Backyard Games



Sun 5 Dec, 10am – 1pm // Decks Reserve, Motueka // FREE

Join in the family fun with giant games, sports equipment and more!

Tata Titanic Cardboard Boat Race

Sun 9 Jan, 2.30pm // Tata Beach, Golden Bay // \$10 per boat, spectators FREE

An epic battle of creativity and boat building skills. Build your boat out of cardboard, then race it around a course at Tata Beach. Will you stay afloat, or capsize? A very fun event for spectators and competitors.

Beach Fun Day

Wed 2 Feb, 4.30pm // Kaiteriteri Beach // FREE

Sandcastle competition, beach games, a 'big dig' and more.

Skatepark Tour

Sat 12 Feb, 3pm – 5pm, Motueka
Mon 14 Feb, 5pm – 7pm, Brightwater
Wed 16 Feb, 5pm – 7pm, Māpua
Sat 19 Feb, 3pm – 5pm, Richmond
Sun 20 Feb, 3pm – 5pm, Nelson // FREE

The Skatepark Tour returns to the region this summer, showcasing the best talent on skateboards, BMX and scooters. Helmets are compulsory for all competitors.

Richmond to Rabbit Island Family Bike Ride

Sun 27 Feb, 11am // Meet at Richmond Aquatic Centre // FREE

This is a fun event open to all and is about celebrating and enjoying cycling. Come along for an easy ride with your family and friends along the Great Taste Trail, improve your bike maintenance skills, tune up your bikes and continue celebrating with food and games at Moturoa / Rabbit Island.

GJ Gardner NZ Beach Volleyball Tour presented by Tip Top

Sat 12 & Sun 13 Feb // Tāhunanui Beach Reserve, beside the Beach Café // FREE

Come and check out New Zealand's best beach volleyball players compete for national titles and Commonwealth Games selection in the Tasman 5-Star Event.



FREE

Age Concern Nelson Tasman's

ACTIVITIES FOR SENIORS



Croquet

Wed 16 & Tue 22 Feb, 10am–11.30am // Nelson Hinemoa Croquet Club, Rutherford Park, Nelson

Sing-Along in the Park

Thu 17 Feb, 10am–11.30am // Washbourn Gardens, Richmond // Meet at Fuchsia House

Thu 17 Mar, 10am–11.30am // Faulkner Bush, Wakefield // Meet at the playground

Fri 25 Mar, 10am–11.30am // Cathedral Steps, Nelson // Meet in the Cathedral Church carpark

Guided Walks

Mon 21 Feb, 10am–11.30am // Maitai Art Walk // Meet at Miller's Acre carpark

Mon 28 Feb, 10am–11.30am // Memorial Walk, Marsden Valley, Stoke // Meet outside the Isel Park sign on The Ridgeway, near Parkview Place, Stoke

Fri 11 Mar, 10am–11.30am // Heritage Walk, Miyazu Japanese Gardens, Nelson // Meet in the car park off Atawhai Drive

Fri 18 Mar, 10am–11.30am // Centre of New Zealand (Botanical Reserve), Nelson // Meet at entrance to walkway

Sit & Be Fit in the Park

Thu 24 Feb, 10am–11am // Memorial Park, Motueka // Meet beside the Senior Citizens Hall

Thu 10 Mar, 10am–11.00am // Collingwood Memorial Hall

Pickleball

Thu 24 Feb, 12pm–1pm // Richmond Badminton Club

Spin Poi in the Park

Tue 1 Mar, 10am–11am // Broadgreen Gardens, Stoke // Meet outside Broadgreen House

Tue 22 Mar, 10am–11am // Isel Park, Stoke // Meet in front of Isel House

Move Good Now in the Park

Thu 3 & Thu 24 Mar, 10am–11am // Anzac Park, Richmond // Meet by the Age Concern Office



Opera

IN THE PARK

Sat 19 Feb, gates open at 5pm // Pre-show community entertainment begins 5.30pm // Trafalgar Park, Nelson // Early bird adult \$25 (until Fri 31 Dec), full price adult \$35, child aged 5–15 years \$8, child under 5 FREE (prices exclude Eventfinda service fee)

Nelson Opera in the Park returns to the city with some of New Zealand's best opera and contemporary singers alongside the Christchurch Symphony Orchestra, under the baton of conductor David Kay.

Bring a picnic and enjoy a wonderful night of music in the open air for the whole family.

Tickets available through Nelson i-SITE, Theatre Royal Nelson (closed 20 Dec–17 Jan) or online at eventfinda.co.nz.

You must be fully COVID-19 vaccinated and produce a vaccination certificate/passport in order to attend this event.

For performance updates go to itson.co.nz, Nelson City Presents Facebook page or scan this QR code (not for attendance recording).



We are working towards zero waste. Please leave nothing but footprints.

The programme features:

- Stan Walker
- Anna Hoetjes – Soprano
- Samuel Downes – Baritone
- Andrew Grenon – Tenor
- Plus more to be announced

Stan Walker

Few figures in Australia and New Zealand music can compare to Stan Walker, one of the finest popular entertainers in a generation.

As a recording artist, Stan has been awarded eight New Zealand Music Awards and the Waiata Māori Award for Radio Airplay five times. In Australia, Stan has been nominated for five ARIA awards. Sales wise, he's achieved two gold singles, two platinum singles and two double-platinum singles.

As a singer, the trans-Tasman pop R&B star, recording artist, actor and activist is said to possess a heaven-sent voice that can sound angelic, sensual, or soaring. Find out for yourself, live, as Stan takes to the stage to perform for the first time with a symphony orchestra.

Christchurch Symphony Orchestra

Recognised nationally and celebrated locally for the depth of its work, the CSO believes that music can enrich lives in different ways and aims to share these experiences with as many people as possible.

Each year, the CSO presents a diverse programme of symphonic works both new and familiar, collaborations with celebrated artists across multiple genres, and brings live music experiences to people around the community – wherever they might be.

The CSO was twice a finalist in the New York Festival Radio awards, along with Radio New Zealand, and, in 2020, won the gold award for the live broadcast of the CSO's 2019 opening Lamb & Hayward Masterworks concert, Phoenix. In 2021, the CSO was awarded the Community Arts Award for its work in Christchurch Men's Prison.

Pre-show entertainment

Enjoy pre-concert entertainment from community performers including NBS Nelson City Brass. Under the baton of Musical Director Nigel Weeks, the A grade brass band continues to present a much loved and appreciated range of concerts and attendances at civic functions around Nelson for more than 160 years.

Artistic Director: Peter Rainey



Tickets for Nelson Opera in the Park event are issued, and entrance to the event is only permitted, on the following additional COVID-19 terms and conditions. You must have access to the NZ COVID Tracer app and scan the relevant venue specific QR code on arrival. You must not attend if you are subject to any COVID-19 related isolation period or are feeling unwell. You must comply with any other mandatory NZ Government requirements relating to COVID-19, including any requirement to be vaccinated against COVID-19.

No refunds will be given for attendees or ticket holders that are unwilling or unable to comply with the requirements listed above, unless required by applicable law. Should the event be cancelled tickets will be refunded.



What's on

Trafalgar Centre

A Nelson City Council *venue*

December 18

Gindulgence

February 17-18

China Week

March 28

Stan Walker

Rutherford Park

A Nelson City Council *venue*

January 15

Taste Tasman

For more info and tickets visit:
itson.co.nz

[f/trafalgarvenues](https://www.facebook.com/trafalgarvenues) [i/trafalgar_venues](https://www.instagram.com/trafalgar_venues)

venues.nelson.govt.nz

MARCHFEST
NZ'S BIG *little* CRAFT BEER FESTIVAL
26 MARCH 2022 - NELSON
FOUNDERS PARK
NOON - 9:30PM
TICKETS - [MARCHFEST.COM](https://marchfest.com)

NELSON CITY CENTRE ARTWALK

STORIES FROM THE SUTER ART GALLERY TE ARATOI O WHAKATŪ COLLECTION, BROUGHT TO THE STREETS OF NELSON

ArtWalk brochures available at
The Suter Art Gallery, I-Site,
NCC and Elma Turner Library



A PROJECT BY MAKE/SHIFT SPACES
AND THE SUTER ART GALLERY
TE ARATOI O WHAKATŪ

MAKE/
SHIFT
SPACES

BRING A PICNIC STAY ALL DAY

NATURE
LAND
WILDLIFE TRUST

LET'S
GET
WILD!



PROUD TO BE NOT FOR PROFIT
CONSERVATION CHARITY

9.30AM - 4.30PM DAILY (LATEST ENTRY 3.45PM) • \$13 ADULTS, \$6 CHILDREN
1 HOUNSELL CIRCLE, TĀHUNANUI, NELSON • 03 548 6166 • NATURELAND.NZ

SECRET LIVES OF DRESSES

EVERY DRESS HAS
A STORY, LET US
TELL YOU OURS...

Come and enjoy some of our
beautiful costumes, find hidden
details and uncover the stories of
our gowns - from the traditional
to the glamorous.

**Broadgreen
House & Gardens**

A Nelson City Council *venue*

276 Nayland Road, Stoke
nelson.govt.nz/broadgreen


Höglund Art Glass

World-renowned art glass created by local
artists Ola & Marie Höglund and their family

VISITORS WELCOME - OPEN DAILY

Closed on public holidays



Höglund Glassblowing Studio

52 Lansdowne Road, Appteby, Richmond • 03 544 6500

www.hoglundartglass.com

What's on

January 5

Netsky, Hybrid Minds,
Friction, Koven & more

February 11

Nitro Circus -
You Got this Tour

February 19

Nelson Opera
in the Park



Trafalgar Park

A Nelson City Council *venue*

For more info and tickets visit:
itson.co.nz

[f/trafalgarvenues](https://www.facebook.com/trafalgarvenues) [@trafalgar_venues](https://www.instagram.com/trafalgar_venues)

venues.nelson.govt.nz

design
print
deliver.



printhouse
look great in print

call us for your print solutions

03 543 9480 sales@printhouse.co.nz

16 Tokomaru Place, Wakatu Estate, Nelson

www.printhouse.co.nz

Still
TURNING HEADS
84 YEARS ON



ENJOY 150 CLASSIC CARS
FROM 100 YEARS OF MOTORING.

Open 7 Days 10am-4pm
1 Cadillac Way, Nelson.
Little Engine Eatery and Museum Store

www.nelsonclassiccarmuseum.nz



WHITE FERNS AT SAXTON OVAL

v INDIA 2ND ODI
MON 14 FEB, 11AM

v INDIA 3RD ODI
WED 16 FEB, 11AM

FOR DISCOUNTED TICKETS JOIN CRICKET NATION
Full schedule at nzc.nz/schedules



experience conservation in action

Discover the hidden valleys
of Waimārama
Self-guide or guided tours



651 Brook Valley Road, Nelson
www.brooksanctuary.org.nz  



Your Healthcare

GP (DOCTOR) OR PHARMACY

If it's not an emergency see your GP.
If you don't have a doctor call Healthline,
24/7 on 0800 611 116.

Need to talk? Free call or text 1737.

See a **community pharmacy** for advice
and treatment.

URGENT MEDICAL CENTRE

For urgent health concerns visit the
Urgent Medical Centre on Waimea Road,
Nelson.

HOSPITAL EMERGENCY DEPARTMENT

If a life is at risk call 111 or go to your
nearest Emergency Department (ED).

TE MAIORA



Nelson Marlborough

Health

www.nmdhb.govt.nz/healthcare

Art Before Dark

Friday 3 December 2021
6 - 8pm
Free Entry

Art Before Dark is back at The Suter Art Gallery. Join us for an exciting evening of new exhibitions, live music, good kai, drinks from The Suter bar, and colourful entertainment from talented, local performers.

STAY / DINE / LOCALS ALWAYS WELCOME

EXPLORE OUR
GLORIOUSLY
GOLDEN
BACKYARD

RATANUI
LODGE
GOLDEN BAY

818 Abel Tasman Dr, Pohara, Golden Bay
+64 3 525 7998 · ratanuilodge.com

Fairfield House

Enjoy summer outdoor concerts
or hire Fairfield for your
very own celebration



gather@fairfieldnelson.org.nz
fairfieldnelson.org.nz



SPLASH INTO SUMMER FUN AT THE POOLS!



3 GREAT LOCATIONS OPEN 7 DAYS

Richmond Aquatic Centre Indoors

- 25m lane pool
- Wave Pool & Lazy River
- Toddler Pool
- Inflatables & Aqua Run
- Sauna & Spas
- Onsite Cafe

Nayland Pool Outdoors Heated Pools

- 50m lane pool
- Dive Pool
- Family Pool
- Inflatables & Aqua Run
- Picnic areas

Riverside Pool Indoors

- 30m Lane Pool
- Toddler Pool
- Rope Swing
- Inflatables & Aqua Run
- Hydro Spa



SHOP,
DINE,
ENJOY



SHOPPING & DINING PRECINCT

Cnr Hardy & Morrison Sts, Nelson
Open 7 Days • morrisonssquare.co.nz



Stockists of Magnolia Pearl, Meg by Design,
La Bottega Di Brunella & Beacon Hill's Closet



Thursday
10am-4pm

Friday
10am-4pm

Saturday
10am-2pm

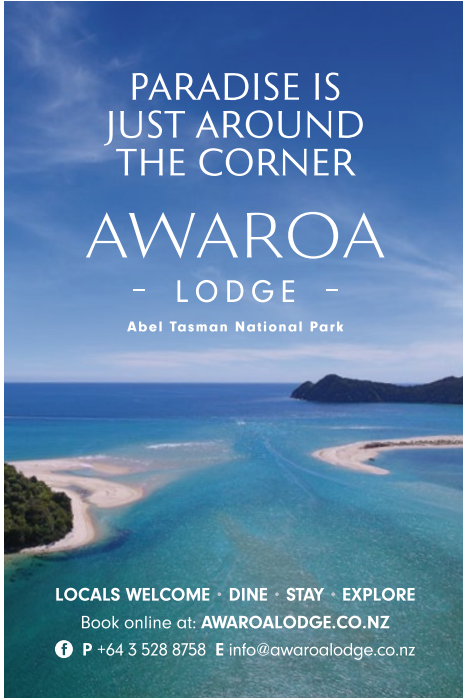
205 PATON ROAD, HOPE, NELSON
WWW.BEACONHILLSCLOSET.COM

PARADISE IS
JUST AROUND
THE CORNER

AWAROA



- LODGE -

Abel Tasman National Park



LOCALS WELCOME · DINE · STAY · EXPLORE

Book online at: AWAROALODGE.CO.NZ

 +64 3 528 8758  info@awaroalodge.co.nz

OPEN 7 DAYS
A WEEK



CONNINGS

Food Market

MORE THAN JUST A GREEN GROCER.
FIND FRESH VEGGIES TO REAL FRUIT ICE
CREAM AND EVERYTHING IN BETWEEN.

151 MCSHANE ROAD @CONNINGSFOODMARKET



ON NOW

DINOSAUR REVOLUTION

SECRETS OF SURVIVAL

ADULTS \$8, KIDS \$5, FAMILY \$25
UNDER 5's FREE

Brought to New Zealand by [GONDWANASTUDIOS](http://GONDWANASTUDIOS.CO.NZ)

 Nelson Provincial
MUSEUM
Pupuri Taonga o Te Tai Ao
nelsonmuseum.co.nz

Ki-o-rahi

at Victory Square



Come and check out the increasingly popular, fast moving team game of Ki-o-rahi. No experience required!

Wednesdays 3.30pm–5.30pm from 10 November – 15 December and 12 January–23 February.

Nau mai,
haere mai
AGES 9-16
YEARS



Nelson FARMERS



MARKET

Your place to be every Wednesday!

A vibrant market brimming with a diverse range of local, fresh, seasonal produce and artisan food.

Every Wednesday, 8.00am–1.30pm
23 Halifax Street, Nelson



www.nelsonfarmersmarket.org.nz



Venues

by Nelson City Council

We have a venue for every occasion

Check out our new website
to book your venue now:

venues.nelson.govt.nz

From heritage buildings to
sports arenas, music festivals
or corporate gatherings we
have a venue for you.



CALENDAR OF EVENTS

This comprehensive listing includes both Council and community-led events for you to plan your summer in the region, from 2 December (when the guide is published) to the end of April 2022. Some events are weather dependent and may have rain dates. Please check the individual listings on itsn.co.nz before attending to ensure an event is going ahead.

Key ● Music ● Art/Theatre/Dance ● Sport ● Movie ● Family ● Seniors ● R18

Date Event

Thu 2 Dec–May	● Secret Lives of Dresses	● Location	Broadgreen Historic House, Stoke
Thu 2 Dec–Sun 27 Mar	● Dinosaur rEvolution – Secrets of Survival		Nelson Provincial Museum
Thu 2 Dec–Sun 16 Jan	● Cathedral Festival of Christmas Trees		Christ Church Cathedral, Nelson
Fri 3 Dec	● Art Before Dark		The Suter Art Gallery and Theatre, Nelson
Fri 3 Dec	● Summer Music Festival		Washbourn Gardens, Richmond
Sat 4 Dec	● Umbrella (Children's) Market		1903 Square, Trafalgar Street, Nelson
Sat 4 Dec	● Nelson Gospel Day		Sundial Square, Richmond
Sat 4 Dec	● Trewavas Street Art Walk		Various homes and gardens, Motueka
Sat 4 Dec	● Country Christmas Market		Moutere Hills Community Centre
Sun 5 Dec	● Sport Tasman's Backyard Games		Decks Reserve, Motueka
Sun 5 Dec	● Nelson Christmas Concert		Christ Church Cathedral, Nelson
Sun 5 Dec	● Nelson Parent and Child Expo		Founders Heritage Park, Nelson
Mon 6 Dec–Sat 22 Jan	● Taarn Scott		Refinery ArtSpace, Nelson
Mon 6 Dec–Sat 22 Jan	● Patrick Malone – New Works		Refinery ArtSpace, Nelson
Tue 7 Dec	● Wellby Talking Café		McCashin's Brewery, Bar and Café, Stoke
Tue 7 Dec–Sun 19 Dec	● Christmas Crafts		Elma Turner Library, Nelson
Tue 7 Dec–Sun 6 Feb	● Nelson Suter Art Society Summer Cash and Carry		The Suter Art Gallery and Theatre, Nelson
Thu 9 Dec	● Wellby Talking Café		Nook Café, Habitat Hub & ReStore, Tahunanui
Fri 10 Dec	● Santa's Grotto		Stoke Library
Fri 10 Dec	● Carols in the Park		Brightwater Domain



Sat 11 Dec	● Umbrella (Children's) Market	1903 Square, Trafalgar Street, Nelson
Sat 11 Dec	● Santa's Grotto	Elma Turner Library, Nelson
Sat 11 Dec	● Tea Dance	St Joseph's Hall, Manuka Street, Nelson
Sat 11 & Sun 12 Dec	● Waste Free Contemporary Christmas Decoration Workshop	Maggy's Textile Studio, Richmond
Sun 12 Dec	● NBS Nelson Santa Parade	Trafalgar Street, Nelson
Thu 16 Dec	● Carols at Isel Park	Isel Twilight Market, Stoke
Thu 16 Dec–Sat 22 Jan	● Centre of Fine Woodworking Exhibition	Refinery ArtSpace, Nelson
Fri 17 Dec	● Jukejoint	The Boathouse, Nelson
Fri 17 Dec	● Christmas Poetry and Tea	Stoke Library
Fri 17–Sun 19 Dec	● The Nutcracker	Theatre Royal, Nelson
Sat 18 Dec	● Golden Bay Santa Parade	Commercial Street, Tākaka
Sat 18 Dec	● Indulgence (<i>backup date Sat 9 Apr</i>)	Trafalgar Centre, Nelson
Sun 19 Dec	● New World Teddy Bears' Picnic	Motueka Recreation Centre
Sun 19 Dec	● Carols by Truck-light	Richmond
Sun 19 Dec	● Nine Lessons and Carols Service	Christ Church Cathedral, Nelson
Tue 21 Dec	● Wellby Talking Café	McCashin's Brewery, Bar and Café, Stoke
Wed 22 Dec	● Xmas Movie	Motueka Recreation Centre
Fri 24 Dec	● Bring The Cheer Christmas Extravaganza	Rec Park Centre, Tākaka
Fri 24 Dec	● Christmas Music at the Library	Elma Turner Library, Nelson
Fri 24 Dec	● Carols on the Cathedral Steps	Top of Trafalgar Street, Nelson
Sat 25 Dec	● Massive Christmas Day Luncheon	The Playhouse Café and Theatre, Tasman
Sun 26 Dec	● Backyard Cricket Competition	The Playhouse Café and Theatre, Tasman
Mon 27 Dec–Mon 31 Jan	● Tāhuna Summer Beach Bus	Between Tāhuna Beach Holiday Park and Nelson i-SITE
Wed 29 Dec	● Ras Judah and Cultural Embassy	Fairfield House, Nelson
Thu 30 Dec	● The Great 2021 Quiz Night	The Playhouse Café and Theatre, Tasman
Thu 30 Dec	● Richmond Market Day	Queen Street, Richmond
Fri 31 Dec–Sun 16 Jan	● Māpua Art Exhibition	Māpua Community Hall
Fri 31 Dec	● New Year's Eve in the Central City	Various venues, Nelson (<i>scan QR code on page 7</i>)
Fri 31 Dec	● Hawaiian Beach Party New Year's Eve Banger	The Playhouse Café and Theatre, Tasman
Sun 2 Jan	● Paul Ubana Jones	The Playhouse Café and Theatre, Tasman

Sun 2 Jan	● Higgins Heritage Park Annual Community Craft Fair and Steam-Up	Higgins Heritage Park, Wakefield
Sun 2 Jan	● Wakefield Country Fête	Wakefield Village Hall and Green
Sun 2 Jan	● Riwaka Market Day	Riwaka Domain
Tue 4 Jan	● Paul Madsen presents ABBA	The Playhouse Café and Theatre, Tasman
Wed 5 Jan	● Netsky, Hybrid Minds and more	Trafalgar Park, Nelson
Wed 5 Jan	● Summer Movies al Fresco: Willy Wonka and the Chocolate Factory	Tāhuna Beach Holiday Park, Tāhunanui
Wed 5–Sat 8 Jan	● National Morris Dance Tour of Nelson and Tasman	Venues around Nelson and Tasman
Wed 5 Jan	● Day 1 – National Morris Dance Tour of Nelson and Tasman	Māpua Waterfront
Thu 6 Jan	● Day 2 – National Morris Dance Tour of Nelson and Tasman	The Honest Lawyer, Stoke and Tāhunanui Reserve
Thu 6 Jan	● Summer Movies al Fresco: National Velvet	Isel Park, Stoke
Thu 6 Jan	● Elton John and Fleetwood Mac Tribute	The Playhouse Café and Theatre, Tasman
Thu 6 Jan	● Parks Programme: Treasure Hunt	Murphy Street Reserve, Nelson
Thu 6–Sun 9 Jan	● Nelson JazzFest	Venues around Nelson and Tasman
Fri 7 Jan	● Summer Movies al Fresco: The World's Fastest Indian S	Washbourn Gardens, Richmond
Fri 7 Jan	● Brown Sugar: Rolling Stones Tribute	The Playhouse Café and Theatre, Tasman
Fri 7 Jan	● Day 3 – National Morris Dance Tour of Nelson and Tasman	Gravity Wines, Mahana and The Moutere Inn
Fri 7 Jan	● Parks Programme: Treasure Hunt	Bill Wilkes Reserve, Richmond
Sat 8 Jan	● Day 4 – National Morris Dance Tour of Nelson and Tasman	Founders Heritage Park / Upper Trafalgar, Nelson
Sat 8 Jan	● Summer Movies al Fresco: Guess Who's Coming to Dinner	Fairfield Park, Nelson
Sat 8 & Sun 9 Jan	● Motueka Country Music Club Festival	Marchwood Park, Motueka
Sun 9 Jan	● The Move – Taking Jesus to the Nation	Tāhunanui Sportsfield
Sun 9 Jan	● Tata Titanic Cardboard Boat Race 25th Anniversary	Tata Beach, Golden Bay
Sun 9 Jan	● Summer Movies al Fresco: International Jam Pot/The World's Fastest Indian	Village Theatre and Junction Green, Tākaka
Sun 9 Jan	● Parks Programme: Family Picnic	Ranui Park, Stoke
Tue 11 Jan	● Parks Programme: Amazing Race	Centre of New Zealand (Botanical Reserve), Nelson
Wed 12 Jan	● Summer Movies al Fresco: National Velvet	Tāhuna Beach Holiday Park, Tāhunanui
Wed 12 Jan	● Lost in Space – Challenge Workshops	Elma Turner Library, Nelson
Thu 13 Jan	● Summer Movies al Fresco: The Parent Trap S	Isel Park, Stoke
Thu 13 Jan	● Parks Programme: Treasure Hunt	Queens Gardens, Nelson
Fri 14 Jan	● Sounds by the Sea (Music)	Tāhunanui Reserve and Upper Trafalgar Street, Nelson



Fri 14 Jan	● Parks Programme: Amazing Race	Easby Park, Richmond
Fri 14 Jan	● Summer Movies al Fresco: Coco	Washbourn Gardens, Richmond
Fri 14 Jan	● Lunctime Concert on Sundial	Sundial Square, Richmond
Sat 15 Jan	● Summer Movies al Fresco: Willy Wonka and the Chocolate Factory S	Fairfield Park, Nelson
Sat 15 Jan	● Onekaka Music Festival	Onekaka Hall, Golden Bay
Sat 15 Jan	● Nelson Drag Racing Association	Motueka Aerodrome, College Street, Motueka
Sat 15 Jan	● Summer Celebration Retro and Vintage Market	Hope Recreational Hall
Sat 15 Jan	● Taste Tasman – Beer, Cider and Food Festival	Rutherford Park, Nelson
Sun 16 Jan	● Summer Movies al Fresco: National Velvet S	Whakatū RDA, The Brook, Nelson
Sun 16 Jan	● Teddy Bears' Picnic	Fairfield House, Nelson
Mon 17 Jan	● Parks Programme: Art in the Park	Isel Park, Stoke
Wed 19 Jan	● Lost in Space – Challenge Workshops	Stoke Library
Wed 19 Jan	● Parks Programme: Treasure Hunt	Miyazu Japanese Gardens, Nelson
Thu 20 Jan	● Summer Movies al Fresco: Guess Who's Coming to Dinner S	Isel Park, Stoke
Thu 20 Jan	● Parks Programme: Art in the Park	Washbourn Gardens, Richmond
Fri 21 Jan	● Sounds by the Sea (Theatre)	The Honest Lawyer, Monaco, Stoke
Fri 21 Jan	● Summer Movies al Fresco: Willy Wonka and the Chocolate Factory	Tapawera Recreation Reserve
Fri 21 Jan	● Parks Programme: Amazing Race	Queens Gardens, Nelson
Fri 21 Jan	● Virtual Reality Drop-In	Elma Turner Library, Nelson
Fri 21 Jan	● Lunctime Concert on Sundial	Sundial Square, Richmond
Sat 22 Jan	● Summer Movies al Fresco: The World's Fastest Indian	Fairfield Park, Nelson
Sat 22 & Sun 23 Jan	● Nelson Kite Festival	Neale Park, Nelson
Sat 22 Jan – Sat 19 Feb	● Wahine	Refinery ArtSpace, Nelson
Sun 23 Jan	● Summer Movies al Fresco: The Parent Trap	Washbourn Gardens, Richmond
Sun 23 Jan	● Pipes in the Park	Fairfield House, Nelson
Mon 24 Jan	● Nelson's Amazing Race for Older Adults	Elma Turner Library, Nelson
Mon 24 Jan	● Nelson's Amazing Race	Elma Turner Library, Nelson
Mon 24 Jan	● Parks Programme: Art in the Park	Centennial Park, Tāhunanui
Tue 25 Jan	● Parks Programme: Amazing Race	Washbourn Gardens, Richmond
Tue 25 Jan	● Coding for Newbies	Elma Turner Library, Nelson
Wed 26 Jan	● Parks Programme: Amazing Race	Isel Park, Stoke

Fri 28 Jan	● Parks Programme: Treasure Hunt	Centre of New Zealand (Botanical Reserve), Nelson
Fri 28 Jan	● Beginners Tai Chi	Elma Turner Library, Nelson
Fri 28 Jan	● Lunchtime Concert on Sundial	Sundial Square, Richmond
Fri 28 Jan	● Summer Movies al Fresco: Hunt for the Wilderpeople	Stoke Youth Skate Park
Fri 28 Jan	● Buskers at the Boathouse	The Boathouse, Nelson
Fri 28 – Mon 31 Jan	● Buskers at Founders	Founders Heritage Park, Nelson
Sat 29 & Sun 30 Jan	● Buskers at Founders – Evening Variety Show	Founders Heritage Park, Nelson
Sat 29 Jan	● Summer Movies al Fresco: Moana	Maara Wheke/Octopus's Garden, Stoke
Sat 29 Jan	● Infant Massage	Elma Turner Library, Nelson
Sat 29 & Sun 30 Jan	● Vintage Machinery Show	Higgins Heritage Park, Wakefield
Sun 30 Jan	● Richter City Rebels	Fairfield House, Nelson
Wed 2 Feb	● Beach Fun Day	Kaiteriteri Beach
Thu 3 – Sun 6 Feb	● Adam Summer Celebration	Nelson Centre of Musical Arts, Nelson
Fri 4 Feb	● 100% DnB Feat The Upbeats, Trei + Jabz MC and Optimus Gryme	Founders Heritage Park, Nelson
Fri 4 Feb	● Lunchtime Concert on Sundial	Sundial Square, Richmond
Fri 4 Feb	● Bazarika	Fairfield House, Nelson
Sat 5 Feb	● Summer Movies al Fresco: Moana	Victory Square, Nelson
Sat 5 Feb	● Nelson Drag Racing Association	Motueka Aerodrome, College Street, Motueka
Sun 6 Feb	● Summer Movies al Fresco: James and Isey	Te Awahina Marae, Motueka
Mon 7 Feb	● Parks Programme: Treasure Hunt	Bill Wilkes Reserve, Richmond
Mon 7 Feb	● International Kai Festival	Founders Heritage Park, Nelson
Fri 11 Feb	● Nitro Circus	Trafalgar Park, Nelson
Fri 11 Feb	● Lunchtime Concert on Sundial	Sundial Square, Richmond
Sat 12 Feb	● Starlet of NZ	Nelson Musical Theatre, Nelson
Sat 12 Feb	● Skatepark Tour – Motueka	Motueka Skatepark
Sat 12 Feb	● Summer Reading Celebration Party	Elma Turner Library, Nelson
Sat 12 Feb	● Tasman Asian Night Food Fair	Washbourn Gardens, Richmond
Sat 12 & Sun 13 Feb	● GJ Gardner NZ Beach Volleyball Tour presented by Tip Top	Tāhunanui Beach Reserve
Sun 13 Feb	● Rennie Pearson: Traditional Celtic Music	Fairfield House, Nelson
Sun 13 Feb	● Motueka Kai Fest	Goodman Reserve, Motueka

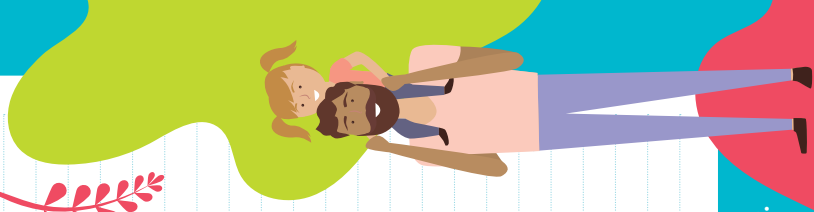


Mon 14 Feb	● Skatepark Tour –Brightwater	Brightwater Skatepark
Mon 14 Feb	● White Ferns v India 2nd One-Day International	Saxton Oval, Nelson
Wed 16 Feb	● White Ferns v India 3rd One-Day International	Saxton Oval, Nelson
Wed 16 Feb	● Seniors Croquet	Nelson Hinemoa Croquet Club
Wed 16 Feb	● Skatepark Tour – Māpua	Māpua Skatepark
Thu 17 Feb	● Seniors Sing-Along in the Park	Washbourn Gardens, Richmond
Thu 17 & Fri 18 Feb	● China Week	Trafalgar Centre, Nelson
Fri 18 –Sun 20 Feb	● Te Puna Wai o Huriawa	Ao Marama Retreat, Collingwood
Sat 19 Feb	● Murchison A&P Show	Murchison Sport, Rec and Cultural Centre and Domain
Sat 19 Feb	● Skatepark Tour – Richmond	Richmond Skatepark
Sat 19 Feb	● RAW –Work Outside the Edge	Refinery ArtSpace, Nelson
Sat 19 Feb	● Opera in the Park (featuring Stan Walker)	Trafalgar Park, Nelson
Sun 20 Feb	● Skatepark Tour – Nelson	Neale Park Skatepark, Nelson
Sun 20 Feb	● Rainbow Rogaine	Rainbow Ski Area, Nelson Lakes
Mon 21 Feb	● Seniors Maitai Art Walk	Maitai Walkway, Nelson
Tue 22 Feb	● Seniors Croquet	Nelson Hinemoa Croquet Club
Thu 24 Feb	● Seniors Pickleball	Richmond Badminton Club
Thu 24 Feb	● Seniors Sit & Be Fit in the Park	Memorial Park, Motueka
Sat 26 & Sun 27 Feb	● Ocean Surfski	Kaiteriteri Beach
Sun 27 Feb	● Richmond to Rabbit Island Family Bike Ride	Richmond Aquatic Centre
Mon 28 Feb	● Seniors Memorial Walk	Marsden Valley, Stoke
Tue 1 Mar	● Seniors Spin Poi in the Park	Broadgreen Historic House, Stoke
Thu 3 Mar	● Seniors Move Good Now in the Park	Anzac Park, Richmond
Sat 5 Mar	● Summer Tango in Nelson	Queens Gardens, Nelson
Sat 5 Mar	● Nelson Drag Racing Association	Motueka Aerodrome, College Street, Motueka
Sat 5 & Sun 6 Mar	● NZ Antique & Classic Boat Show	Kerr Bay, St-Arnaud
Sun 6 Mar	● Children's Day	Richmond Aquatic Centre
Sun 6 Mar	● Boulder Bank Walk	Boulder Bank Drive, Atawhai
Thu 10 Mar	● Seniors Sit & Be Fit in the Park	Collingwood Memorial Hall
Fri 11 Mar	● Seniors Heritage Walk through Miyazu Gardens	Miyazu Japanese Gardens, Nelson
Sat 12 & Sun 13 Mar	● Relay For Life	Richmond Park Showgrounds



Key ● Music ● Art/Theatre/Dance ● Sport ● Movie ● Family ● Seniors ● R18

Sat 12 & Sun 13 Mar	● Lake Rotoiti Powerboat Club Regatta	Lake Rotoiti, St Arnaud
Sun 13 Mar	● Māpua Wharf Regatta	Māpua Wharf
Thu 17 Mar	● Seniors Sing-Along in the Park	Faulkner Bush, Wakefield
Fri 18 Mar	● Seniors Walk to Centre of New Zealand	Centre of New Zealand (Botanical Reserve), Nelson
Sat 19 Mar	● Harmonie Harp Orchestra Recital	Victory Community Centre, Nelson
Sun 20 Mar	● Weet-Bix Kids TRYathlon	Tāhunanui Sportsfields
Sun 20 Mar	● Multicultural Festival	Founders Heritage Park, Nelson
Sun 20 Mar	● Harmonie Harp Orchestra Recital	Dovedale Hall
Tue 22 Mar	● Seniors Spin Poi in the Park	Isel Park, Stoke
Thu 24 Mar	● Seniors Move Good Now in the Park	Anzac Park, Richmond
Fri 25 Mar	● Seniors Sing-Along in the Park	Cathedral Steps, Nelson
Fri 25 Mar–Sat 23 Apr	● Changing Threads Contemporary Textile Fibre Art Awards	Refinery ArtSpace, Nelson
Sat 26 Mar	● MarchFest	Founders Heritage Park, Nelson
Sat 26 & Sun 27 Mar	● Nelson's Model Railway Exhibition	Warnes Stadium, Stoke
Mon 28 Mar	● Stan Walker	Trafalgar Centre, Nelson
Thu 31 Mar–Sat 9 Apr	● Nelson Fringe Festival	Refinery ArtSpace, Nelson
Fri 1–Sun 3 Apr	● Move Women's Retreat	Shambhala Eco Retreat, Takaka
Fri 1–Sat 30 Apr	● Tuku 22 Heritage Month Whakatū	Various locations around Nelson
Mon 4 Apr	● The Bee Gees – Night Fever	Theatre Royal, Nelson
Thu 7 Apr	● Don McGlashan & The Others	Theatre Royal, Nelson
Fri 8 Apr	● Positive Ageing Expo	Headingly Centre, Richmond
Sun 10 Apr	● Brook Waimārama Sanctuary Open Day	Brook Street, The Brook, Nelson
Wed 13 Apr	● Friends The Musical Parody	Theatre Royal, Nelson
Fri 15–Mon 18 Apr	● Orienteering National Championships	Nelson College and Takaka Hill
Sat 16 Apr	● Studebaker Drivers Club Nationals Car Display	Founders Heritage Park, Nelson
Sat 23 Apr	● Queen Street Quest	Sundial Square, Richmond
Sat 23 & Sun 24 Apr	● NBS Kaiteriteri Big Bike Weekender	Kaiteriteri Mountain Bike Park



Please check individual venue websites and Facebook pages or itson.co.nz for confirmation of events on the day.



Nelson City Libraries

Visit nelsonpubliclibraries.govt.nz/events-calendar

Elma Turner and Stoke libraries offer regular Family Movie Fridays, Spacecraft Mondays, YA Board Game Afternoons, and Summer Science Workshops for different age groups.

Tasman District Libraries

Visit tasmanlibraries.govt.nz/events

Check the website for lots of fun summer activities at the Richmond, Motueka, Tākaka and Murchison libraries.



Summer Movies al Fresco

See pages 8 – 9 or scan the QR code.

No screenings if raining. If the weather is marginal, please text 'Is it on?' to 021 776 623 after 7.30pm on the night.



Regular events

Songs at Sundown

Every Friday until 25 February, Founders Café

Higgins Heritage Park Steam-Up and Open Day

Two days a month until April

Willow Bank Heritage Village Open Day

First Sunday of each month (except January)

Sharland Cycles 5k Fun Run & Walk Series

Wednesdays throughout December, February and March, Club Waimea, Richmond

Tāhuna Summer Beach Bus

Double-decker bus running throughout the day between Tāhuna Beach Holiday Park, Tāhunanui Beach and Nelson i-SITE, 27 December to 31 January

Harakeke NZ Flax Weaving

Two-day introductory workshop, every month at Broadgreen Historic House, Stoke

Unconventional Textiles Pre-Used and Unusual

Two day workshops each month at Maggy's Textile Studio, Richmond

For more information visit itson.co.nz

Trademark 
PRESENTS

FIRST PHASE ANNOUNCEMENT

NETSKY

HYBRID MINDS+ FRICTION

KOVEN PONZ & MORE TO BE ANNOUNCED

JAN 5TH: TRAFALGAR PARK



TICKETS ON SALE NOW!

LONG
WHITE
VOODKA

 AUDIOLOGY

fabrik™ Trademark 