



## Drop in to our next Māpua Masterplan community discussion

Thanks so much to everyone who attended our first community drop-in session on Saturday 10 February.

We're pleased to be at this point of the Māpua Masterplan and we're extremely grateful for your support and the feedback provided so far on the options and actions we have developed.

We have another opportunity for you to speak with staff, elected members and iwi representatives to help us shape the future development of Māpua.

The next community drop-in session will take place at the Māpua Community Hall, 72 Aranui Road, on Thursday 29 February from 2.00 pm – 8.00 pm.

Feedback can be provided in person at this event or by filling in the feedback forms at [shape.tasman.govt.nz/mapua-masterplan-2023](https://shape.tasman.govt.nz/mapua-masterplan-2023).

Feedback closes on Sunday 10 March.

It is important to clarify that nothing has been pre-determined at this stage and any suggestions that we are putting forward are only options for consideration.

Several more steps are still to come in the process.

Once we have completed our consultation of Masterplan options, we will then finalise a draft Masterplan for public review.

Submissions, hearings and deliberations will follow this, after which we will make the final decision on the Masterplan.

The end outcome is that we can produce a final Masterplan that reflects the views and aspirations of the Māpua community, and which will be implemented through methods such as plan changes and 10-Year Plan funding.



## WONDERFUL WATER



## Port Taranaki issues and responses – what do you think?

We're calling for feedback on the Port Taranaki – draft Issues and Options Report.

The report identifies eight key issues and a set of possible responses. A feedback panel and copy of the report are now online at Shape Tasman which also features a slide deck with past and present images.

We also want to hear of other issues and options that should be considered.

Your feedback is important as it will influence:

- The Port's Structure Plan, which will guide the future use of the Port and adjoining land.
- The provisions for the Port in the Tasman Resource Management Plan review.
- Our future funding decisions.

Share your thoughts by Friday 1 March at [shape.tasman.govt.nz/port-taranaki-structure-plan](https://shape.tasman.govt.nz/port-taranaki-structure-plan).

## How does the dam work?

Over the last few months, as we get closer to the Waimea Dam being completed, there have been many questions and opinions shared as to how the dam works.

It is actually very simple.

The dam's single purpose is to maintain and support the flow of water in the rivers that ultimately support the Waimea Plains.

These rivers, the Lee and the Wairoa, feed into what becomes the Waimea River. This supplies the aquifers that provide water to everyone on the Plains.

The health and supply of these aquifers, while supplemented by groundwater, is mainly reliant on the river's health.

The Waimea River has been slowly degrading over the years, and a continued and sustained flow is essential to the river's long-term future.

Most of the water used by the urban, commercial – including horticulture, and other users on the Waimea Plains is taken using bores extracting water from the aquifers.

That flow and health of the aquifers also prevent the intrusion of salt water from the estuary into the groundwater aquifers.

The dam is projected to provide this support to the river for the next 100 years, which in turn is expected to provide enough of the most basic of resources for the growth in the area for the same amount of time. The system is designed to support the river up to a 1 in 50-year drought, and even then, there will be access to water albeit with some restrictions.



There are no pipes directly from the dam to the townships or commercial properties on the plains. However, the flow from the dam will still support the urban areas of Richmond, Māpua, Ruby Bay, Brightwater, Hope and Wakefield as they use bores in the Waimea Plains.

The Council is the largest shareholder in the dam due to its need to provide water to urban areas and industrial users. The Council holds a consent for its water needs, much like any of the horticulture interests who have their own bores.

As the dam is yet to be completed, all water users, including the Council's supply, are still subject to pre-dam consent conditions – which means we are able to take less water than what current demand requires, hence the recent water restrictions.

Once the dam is completed and handed over, there will be a noticeable increase in how much water can be taken – so in future, there will be a much higher threshold for introducing water restrictions.

Essentially the dam is designed to provide century-long support to the rivers as they support the urban and commercial demand for water on the Plains.



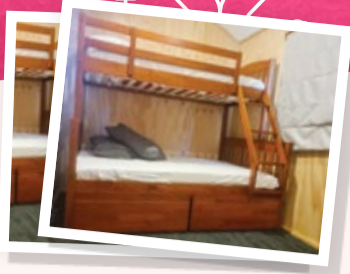


## Stay in Collingwood or Murchison and save!

If you feel like a bit of time out but don't want to go too far from home, nor pay an arm and a leg, why not think about Collingwood or Murchison?

We own the Collingwood Holiday Park and Riverside Holiday Park in Murchison.

To celebrate the refurbishment of cabins in Murchison and the construction of two new cabins at Collingwood, we are offering Tasman residents a discount in March.



Choose to spend a weekend in Murchison and you'll get 10 percent off your accommodation and any Ultimate Descents rafting bookings.

If you want to get away to Collingwood, weekdays or weekends, you will also get 10 percent off your stay in March.

To get this deal, simply mention this offer when you make your booking.



## Amazing Gracie wins art and science awards

Gracie Quinney's idea of a peaceful town is a place where people show kindness, hope and love to others and her artwork to portray her view has earned her a prize in an international competition.

The theme for the annual Mayors for Peace Children's Art Competition in 2023 was Peaceful Towns.

This round the competition received 4,766 applications from children living in the 115 participating towns and cities in 19 countries.

It's the third year Gracie has entered artwork in the competition, each time

reaching the finals, but this time she was placed third with two other young artists in the 11 to 15-year-old category.

The 11-year-old Wakefield artist spent a month on her artwork which is a self-portrait of herself, sitting in her garden, thinking about everyone being part of one big world.

But Gracie's talents don't end in her artistic endeavours.

At the Scitec Student Science Expo prizegiving late last year, she received the prize for the Sustainability Award sponsored by us here at Tasman District Council, for her project, "Solar: Blazing a path to a brighter future."

## Fun activities to celebrate our tamariki

Children's Day / Te rā o ngā Tamariki celebrates children in Aotearoa New Zealand and is a national day of awareness held annually on the first Sunday in March.

It was started in 2000 by the first Children's Commissioner to encourage creating a healthy environment for children / tamariki to grow up in.

It's a day for families to spend time with their children and to think about putting them first so they can thrive and fulfil their potential.

We are partnering with the Richmond Aquatic Centre for an afternoon of interactive games and activities as part of national Children's Day.

Enjoy the fun-filled pools for just \$2 entry or take part in outdoor activities that all of the family can join, including bouncy castles, giant bubbles, music, and more.

Bring a picnic and enjoy some quality time with your children, showing them they are special, and making new memories. See you at the Richmond Aquatic Centre on Sunday 3 March from 11.00 am – 2.00 pm.



## Fish Passage Project comes to St Arnaud

As part of our Freshwater Improvement Fund work to improve fish diversity and abundance across Tasman, we are pleased to say that the next phase of our Fish Passage Project is taking place in Tophouse / St Arnaud.

The Tasman Jobs for Nature Fish Passage Project is a five-year programme running until June 2026 assessing and carrying out simple structure 'fixes' to make them fish-friendly.

With the support of landowners, we will enable fish to complete their natural life cycles.

Our shift to Tophouse and St Arnaud represents a continuation of our efforts in other parts of the District, with fish in Golden Bay, Moutere, Tapawera and Waimea already enjoying waterways that are easier to navigate.

One key focus of this project is to support private landowners by assessing any in-stream structures (such as culverts)



and completing remediation when required and within the scope of the project funding.

If you have an in-stream structure on your land, a team of fish passage experts from Kūmānu Environmental are visiting private land to help connect waterways and will be in touch with landowners in the coming days to explain how they can help.

This project is funded by Tasman District Council and the Ministry for the Environment with the support of local iwi – in the hope of assessing all structures on private land in Tasman.

This work is completely free to landowners and is generally simple to carry out.

**For more information contact:**  
[fishpassage@kumanuenviro.co.nz](mailto:fishpassage@kumanuenviro.co.nz) or  
[freshwaterimprovement@tasman.govt.nz](mailto:freshwaterimprovement@tasman.govt.nz)

## Pūponga planting planned

The clearance of a stand of old man pine trees at Port Pūponga in Golden Bay has provided a new environment for foreshore plantings of coastal grasses and rushes.

The presence of the old trees meant nothing thrived under them, but now that they're gone, species of native sand-binding plants like spinifex and pingao, alongside coporosma, sand tussock and flax should thrive.



A group of residents has been drawn together to co-ordinate the new coast care planting programme with the guidance of our reserves team, which will help protect against coastal erosion and make it a nicer environment.

## Your chance to influence our pest management plan



We are seeking your feedback on a proposal to amend the Tasman-Nelson Regional Pest Management Plan 2019–2029 (RPMP) which allows for rules around new pests and refines our current policies. This is your opportunity to influence pest management activities and policies in our region.

As with the development of the current RPMP in 2018/2019, the proposal is a collaborative effort between Tasman District and Nelson City Councils.

The proposal intends to declare blue passion flower, moth plant, common and purple pampas, water celery, Vietnamese parsley and several pest and wilding conifer trees as new pests in the whole, or parts of, Tasman-Nelson.

It also serves to amend existing pest policies and rules around boneseed, Mediterranean fanworm (Sabella) and

feral/stray cats, placing new obligations on occupiers of land and marine craft/structures accordingly.

The proposal does not otherwise affect the current RPMP, except for minor changes required to update the plan and reflect the inclusion of the new sections, policies and rules.

We will consider all submissions before making amendments to the RPMP. A hearing is planned for 27 May, before we finalise the amended plan in June. Both Councils are expected to approve and adopt the plan later in the year.

Visit [shape.tasman.govt.nz/pest-plan](http://shape.tasman.govt.nz/pest-plan) for more information and to share your feedback. Alternatively, you can write to: The Chief Executive, Tasman District Council, 189 Queen Street, Private Bag 4, Richmond 7050.

**NELSON MARLBOROUGH WASTE**

Providing liquid waste management solutions to all  
 Businesses, local authorities and government agencies

FREEPHONE 0800 725 326  
 EMAIL [bookings@nmwaste.co.nz](mailto:bookings@nmwaste.co.nz) [nmwaste.co.nz](http://nmwaste.co.nz)





## Volunteer support underlines Murchison pump track's seal of approval

It's taken a hot pace to put everything in place, but with a ton of volunteer support, we've reached a milestone in the construction of Murchison's new pump track.

Asphalting of the track surface was completed last week – signalling the end of the major work which began in mid-January.

The summer weather has meant warm days for those working on the pump track site, located near the Murchison Sport, Recreation and Cultural Centre.

Led by the team from Empire of Dirt, the job has been boosted by the outstanding efforts of some very generous and hard-working volunteers lending a hand.



The project is funded by tranche one of the Government's Three Waters Better Off Support Package.

However, local contractors, businesses and residents have also offered their time to get behind a wheelbarrow, provide equipment or simply supply some kai to keep energy levels up.

On more than one occasion, the offers of help have been surplus to requirements, but greatly appreciated nonetheless.

Those involved with the project and anyone dropping by to check progress say the current look of the pump track has exceeded expectations.

It is hoped that the facility and surrounds will become a destination for riders and scooters to descend upon in the future.

The next step is to proceed with landscaping, fencing and the addition of seating and shade sails over the coming weeks.

An official opening is expected in April. We want everyone to be able to use and enjoy the pump track as soon as possible – however for the time being, it's still a construction site and therefore closed to the public.

## Tree damage underlines growing vandalism issue in Tasman Reserves

We're asking two things of people as we look to reduce the level of damage to our parks and reserves. If you feel the need to damage property – take a breath, it's not yours. If you see it – let us know.

We've recently had nine Himalayan Oak trees in Hoddy Estuary Park ring-barked, seemingly intending to kill them, as well as two other trees cut down in another area of the reserve.

The Himalayan Oaks are a particularly sad loss, given they were planted by the community back when the park first opened more than 15 years ago, and they were developing into beautiful trees.

Unfortunately, this is an example of a wider trend that we are seeing across Tasman, where members of the public are damaging exotic species in our green spaces.

In the past month, our Reserves team have also had to deal with numerous incidents of theft and vandalism at other spaces – including Washbourn Gardens, White Gate Reserve and Wakefield.

These actions are illegal and could result in prosecution by the police if the culprits are identified.

Instead, this takes up thousands of dollars and many staff and contractor hours that should be spent on projects and items that enhance, rather than destroy community facilities.

We're frustrated and extremely disappointed that people have taken it upon themselves to cause damage in various forms – there is nothing accidental or naive about this and the actions of a few with obvious issues ruin the opportunity for everyone else to use and enjoy these spaces.

**Please call us on 03 543 8400 to report any damage or provide information that could help us identify those responsible and reduce the incidence of vandalism taking place.**



## Motueka streets becoming safer for everyone

The list of new projects to improve things for walkers and cyclists in Motueka is gradually getting ticked off.

Two new raised crossings are helping walkers, those on bikes, scooters and mobility devices to get from one side of Pah Street to the other and across Talbot Street. The footpath has been widened, along with road markings to encourage considerate and safe shared use of the space.

A little further along Pah Street, we've upgraded the existing Parklands School crossing to a raised crossing for greater visibility for school children crossing and to slow traffic outside the school.

The new raised concrete shared path crossing linking the existing trails from Estuary Reserve to Goodman Reserve, including upgrades to the surrounding shared paths and road drainage is being well received.



Work is nearing completion on a shared path connecting Manoy Street to Talbot Street, behind the town centre and near Motueka High and Parkland School. This will be a 3m wide asphalt path.

Looking ahead, a roundabout is planned at the Whakarewa Street / Manoy Street intersection to connect the new Wakatū Incorporation Motueka West development on the south side of Whakarewa Street.

We're also about to start work relocating the bus stop on Wallace Street to a new location outside the library, and will construct a new bus shelter, bike parking and more footpath space.

We're in the final design stages of creating a shared pathway connecting Te Āwhina Marae to where the existing pathway ends on Pah Street, and around to Whakarewa Street in the other direction.

## Pedalers pause for refreshments

They came in their dozens, on cycles of all shapes and sizes – commuters, students, leisure riders, even babies in bike seats.

Our annual 'Bikers' Brekkies' in Richmond and Motueka were a great success with riders enjoying fruit, muffins, muesli and a multitude of giveaways.

In Richmond, the team from My Ride Richmond were on hand to do free cycle checks and offer advice and encouragement to all cyclists with The Shot mobile coffee providing a free caffeine boost to those wanting it.

In Motueka, a group from Easiriders Motueka stopped by and were stoked the event was held in their town.



Our Road Safety Co-ordinator Jeni Thornborough says it was important that we take events like the Bikers' Brekkie all across Tasman to check in with our cycling community around road safety.

She says Motueka was a trial, and the number of cyclists who stopped in at the breakfast on their morning commute shows that we need to do this as an annual event.

Susan, a keen cyclist, said "It's wonderful that you are doing this, it brings people together, our group rides every week so we will definitely look out for this event next year".

**G.J. Gardner. HOMES**

NEW SHOWHOMES OPEN 1PM – 4PM DAILY

48 & 50 Summersfield Boulevard, Richmond

OFFICE 195 Queen Street, Richmond

CONTACT 03 543 9502 | 0800 42 45 46

OFFICE OPEN Monday to Friday, 9am – 5pm

www.gjgardner.co.nz

Proud to be sponsoring:

### Surveying and Resource Management

- Subdivision Design and Management
- Resource Consents and Planning
- Land Development Engineering
- Project Management

81 Selwyn Place, Nelson

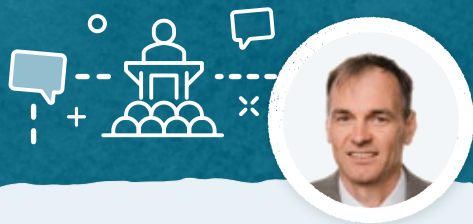
Phone 03 548 4422

staigsmith.co.nz

**STAIG & SMITH**<sup>TD</sup>

ENHANCING THE LAND





## Councillor Glen Daikee, Richmond Ward

Meeting quarterly, the Accessibility for All forum focuses on accessibility challenges faced by those in Nelson and Tasman. The purpose of the group is to provide advocacy for people with disabilities and accessibility challenges.

Around 25% of New Zealanders identify as disabled and approximately 11% of young people have a disability so it's vital this group ensures their concerns are heard by local and central government.

At recent meetings, the forum has heard strong demand for an inclusive and accessible playground, which would give those with and without disability the same access to play, breaking down barriers both physically and socially, while also giving children and families the experience of playing together.

Accessibility is a problem with most playgrounds. For example, bark nuggets used in playgrounds are not suitable for those using mobility devices such as wheelchairs and walkers, excluding

them from even entering. To address this, a planned upgrade to Motueka's Decks Reserve will include new accessible elements.

In Richmond, the Council is in the early scoping stages of building a new fully accessible park. To help make this a success, later this year we will be looking to hear from the community, particularly those living with a disability, their families, and those working or volunteering in the disability sector.

Finally, thank you to those who contribute to help make this a beautiful region and a place where facilities and activities are inclusive and accessible for all members of the community to enjoy.



## Motueka Community Board

2023 was a very busy and colourful year for the Motueka Community Board. With a significant increase in community attendance and engagement, we heard from 55 speakers at public forums, granted \$6,400 of Discretionary Funding to local groups and initiatives, and contributed over \$85,000 to Special Projects across the Motueka Ward.

We are preparing for the next round of Special Projects that the community will be able to vote on soon.

Our Board meets publicly from February to December on the third Tuesday of every month at Motueka Library. Meetings start at 4.00 pm with up to 30 minutes devoted to the public forum; this gives members of the Ward an opportunity to address the Community Board with any concerns, queries, or ideas. We hear a variety of things from poo in the park, aerodrome noise, street sign requests, and pitting of copper cylinders from chlorination

to solar energy efficiencies. If you are interested in having a speaking slot, please register on the Council website, or inquire at the Motueka Service Centre.

In addition to our monthly meetings, Board members attend workshops, committee meetings and public engagements, review Council recommendations, write submissions, and most importantly listen to and advocate for the community.

Members of our Board are Chair – Terina Graham, Deputy Chair – Claire Hutt, Board members Nick Hughes and David Armstrong, and the three Motueka Ward Councillors, Trindi Walker, Brent Maru and Barry Dowler.

You can reach us individually (firstname.lastname@tasman.govt.nz) or as a group by emailing motuekacommunityboard@tasman.govt.nz. We are looking forward to a productive year ahead.

# WHAT'S ON IN TASMAN



## Tasman Skatepark Series

- Saturday 24 February, McGazzaland Wakefield.
- Saturday 9 March, Richmond Skatepark.
- Saturday 23 March, Nelson Skatepark.

It's time to show the world the best of what you've got in our annual Tasman Skatepark Series. This is a great chance to show off skateboard, BMX and scooting skills and compete against other contestants from around the District. All events kick-off at 12.00 pm with registration open from 11.00 am. Helmets are compulsory. The categories are skateboard, BMX bikes/bikes and scooters, with various age groups: Girls (open), Junior (12 years and under), Intermediate (13 – 17 years) and Open (18 years and older).

## Summer Movies Al Fresco

- Friday 23 February, Paddington 2, Village Green, Ellis Street, Brightwater.
- Saturday 24 February, Chak De! India, Washbourn Gardens, Richmond + Indian community evening with food and music from 6.00 pm.

A great collection of movies screened in parks across the region. Gather a group, a picnic, load up the couch and join us from 7.30 pm to play giant board games, talk with each other and watch the region's glorious summer sunsets. Movies start at dusk. \$2 adult, \$1 child. If it looks like rain, please text 'Is it on?' to 022 406 1665 after 7.30 pm on the night.

## International Book Swap

Tuesday 27 February, 1.30 pm – 3.00 pm, Motueka Library Te Noninga Kumu.

Come along to share and swap your non-English language books, have a

cup of tea and connect with others. Free to participate.

## Author talk – Des Molloy

Wednesday 28 February, 5.30 pm, Richmond Library.

Des has written several books on his real-life global motorcycling adventures, and he will be introducing his latest book "The Ernie Diaries". You don't need to be a motorcycle maniac to enjoy these tales of adventure and discovery on classic motorcycles. Free to attend.

## Best Me with Wendy Strawbridge from Health Action Trust

Thursdays in March, 1.00 pm – 2.00 pm, Richmond Library.

You are welcome to attend each workshop individually or the entire series. Free.

- 7 March: Habits – Help or Harm?
- 14 March: Change – Friend or Foe?
- 21 March: Connection – Let's Join the Dots
- 28 March: Sleep – Yeah ... Nah

## Staying Safe Refresher Drivers workshop

Wednesday 6 March, 10.00 am – 12.30 pm, Summerset Richmond Ranges.

Need to refresh those driving skills and knowledge to stay safe driving on the road? This free joint initiative between Age Concern and NZTA Waka Kotahi provides an opportunity to review your driving practices and your knowledge, with the use of videos and discussion with a driving instructor. For more information or to book your spot, please call Jackie at Age Concern on 021 195 8108 or visit [ageconcernnt.org.nz/services/older-drivers](http://ageconcernnt.org.nz/services/older-drivers).

# NEWSLINE NOTICES



## Assistance for art

Our Creative Communities Scheme has funding available to help groups and individuals with arts projects in Tasman – anything from music, theatre, festivals, mural painting, outdoor sculptures, art in public spaces, kapa haka, singing, art workshops and more. But get in quick, as this round of funding closes on Sunday 10 March. Funded by Creative New Zealand, the Creative Communities Scheme is designed to support opportunities for communities to participate in the arts. There is a focus on art projects that have broad community involvement, involve young people or support the diverse arts and cultural traditions of local communities. Visit [tasman.govt.nz/creative-communities](http://tasman.govt.nz/creative-communities) to find out more and apply.

## Sign up to get Newsline via email

If you prefer to read your news online, you can now sign up to receive a copy of Newsline straight to your inbox. Visit [tasman.govt.nz/newsline](http://tasman.govt.nz/newsline) and follow the link to join the mailing list.

## Keep an eye on our water quality

In Tasman, we're lucky to have so many places where we can go swimming and enjoy water sports. Overall, our rivers and beaches are great for swimming.

All summer long, our environmental officers are out and about monitoring the water quality at popular swim spots across the District.

We monitor a range of sites, so unless there are warnings out, we can be reasonably assured of good water quality. Check out the latest information at [tasman.govt.nz/swimming-water](http://tasman.govt.nz/swimming-water).

You can also find more information about toxic algae on our website: [tasman.govt.nz/toxic-algae](http://tasman.govt.nz/toxic-algae).

## Council hui

Meetings will take place in person and via Zoom. For details, the Zoom link and recordings of previous meetings visit [tasman.govt.nz/meetings-calendar](http://tasman.govt.nz/meetings-calendar). Unless otherwise stated, all meetings will be held at Council Chambers, 189 Queen Street, Richmond.

## Saxton Field Committee

Tuesday 27 February, 9.30 am. Boardroom, Sports House, 142 Saxton Road East, Saxton Field Complex, Stoke.

## Nelson Regional Sewerage Business Unit

Friday 1 March, 9.30 am. Nelson City Council, 110 Trafalgar Street, Nelson.

## Strategy and Policy Committee

Thursday 7 March, 9.30 am.

## Is your water safe?

Get the best from your water, take the worst out of it!  
Water purification / Filtration / UV sterilisers / Water softening

Water testing service available

thinkwater.  
TASMAN BAY

03 528 8888

