



NEWSLINE

PĀNUI 9 FEBRUARY 2024
ISSUE 563

tasman
district council

Te Kaunihera o
te tai o Aorere

KEEPING YOU INFORMED ABOUT NEWS AND EVENTS IN TASMAN DISTRICT



Waimea Community Dam full and flowing

The Waimea Community Dam reached a massive milestone recently when Te Kurawai o Pūhanga, the reservoir behind the Waimea Community Dam, reached its full capacity and the spillway started flowing on Sunday 21 January 2024.

Now that the reservoir is full, the next steps include final engineering analysis and verification of dam performance. The temporary pipes and facilities will then be removed to complete the final hook up of the permanent pipework. Waimea Water Ltd expects the project to be completed and commissioned in March 2024.

How does the dam work?

Water released from the Waimea Community Dam complements the natural system by supplementing low river flows to assist recharge of the Waimea aquifers. Assisted recharge of the aquifers maintains water levels for extraction and reduces the risk of saltwater intrusion from the coast. Maintaining higher river flows also improves river health.

The flow from the dam will support both horticulture and the domestic water wells near Appleby that supply water to the combined Richmond / Nelson water network. Māpua, Ruby Bay, Brightwater and Wakefield also use bores in the Waimea Plains, benefitting from the recharged aquifers.

The size of the reservoir mitigates the impact of a drought greater than a 1:50 year event.

To find out more about the Waimea Community Dam and see the latest video footage, visit waimeawater.nz.

Pictured: Te Kurawai o Pūhanga, the reservoir behind the Waimea Community Dam at full capacity with water flowing down the spillway.

FUTURE FOCUS



New Chief Executive Officer for Tasman District Council

We wish to congratulate and introduce Leonie Rae as our new Chief Executive Officer (CEO).



Leonie is familiar to many within our organisation as well as the public.

She has been our Chief Operating Officer since August 2021 and is the first internal appointment to the most senior role since its establishment in 1989.

Leonie has previous experience in the CEO role, having stepped up for a year from March 2022.

These are understandably two very different roles; one is about ensuring continuity, support and efficiency, whereas being an appointed CEO comes with different expectations of leadership, strategic guidance and delivery, and relationships.

With her experience at a senior executive level in Christchurch City Council

before, during and after the devastating earthquakes and leading the recovery of that Council's regulatory building accreditation, we see an executive that has and will bring new and different perspectives to challenges.

Mayor Tim King said that "in making this appointment the Council was looking for a seasoned executive who has the experience and insight to identify what is working within the organisation and what can be improved.

We were grateful to have received a good number of applications from very qualified people that met this expectation".

Leonie will take up the role from 19 February 2024.

Construction of Murchison Pump Track underway!

We're pleased to announce the start of a community project that promises to pump up the opportunities for fun in Murchison.

The Murchison Pump Track and Playground Upgrade project – funded by the Government's Three Waters Better Off Support Package – will transform the existing bike track behind the Murchison Sport, Recreation and Cultural Centre, bringing this closer to the carpark and creating an all-weather and all skill level track.

The installation of playground equipment also remains part of the overall vision for the \$250,000 project. However, the pump track has been identified as the immediate focus.

Contractors Empire of Dirt arrived in Murchison in mid-January ready to start



the construction of the asphalt pump track. In just a couple more weeks, this pile of dirt out the back of the Murchison Recreation Centre will be an asphalt pump track.

The community is excited, and feedback on how it is taking shape has been positive so far.

A confirmed opening day will be shared with the community so keep your eyes out. If you're heading along to the Murchison A&P Show on 17 February, look out for our display which highlights the project and how we're tracking.

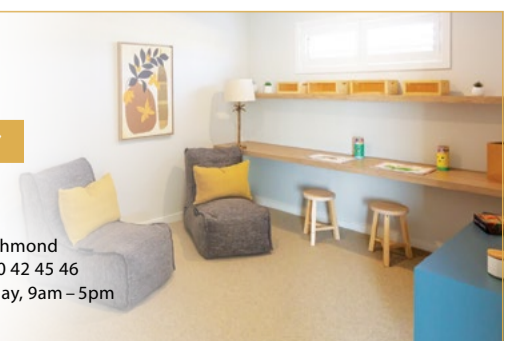
G.J. Gardner. HOMES

NEW SHOWHOMES OPEN 1PM - 4PM DAILY

48 & 50 Summersfield Boulevard, Richmond



Proud to be sponsoring: OFFICE 195 Queen Street, Richmond
CONTACT 03 543 9502 | 0800 42 45 46
OFFICE OPEN Monday to Friday, 9am - 5pm
www.gjgardner.co.nz





Protecting the Top of the South from the threat of marine pests



The Top of the South summer marine pest surveillance programme aims to educate boat users on the risks posed by marine pests, minimise the introduction of marine pests to the regions and reduce the spread of species already present.

The first rounds of inspections were carried out in January. A team of biosecurity experts and divers were out and about inspecting the hulls of boats for marine pests in targeted areas popular with boaties, including Abel Tasman National Park and Queen Charlotte Sound.

Marine pests can do serious harm to our natural ecosystems, economy and human health, establishing quickly in an area, out-competing and displacing our native species that live there.

Most marine pests have arrived in New Zealand on vessel hulls, so boat owners play a vital role in preventing the invasion and spread of marine pests.

Vessels should ideally be inspected and cleaned appropriately every 3–6 months before leaving your home port.

The hull surveillance programme is funded by the Top of the South Marine Biosecurity Partnership, coordinated

by Boffa Miskell and undertaken by specialist divers from Wai Dive.

The Partnership is a collaboration between Nelson City, Tasman District, Marlborough District and Greater Wellington Regional Councils and Ministry for Primary Industries.

Support and expertise are also provided by key partners such as the Department of Conservation, the local aquaculture industry, port companies and mana whenua.

Go to marinepests.nz/tos for more information.

If you come across a suspect marine animal or plant pest, take a photo or sample if you can and report it ASAP by calling the Exotic Disease and Pest Hotline at 0800 80 99 66 or online at mpi.govt.nz/report-a-pest-or-disease.

Environmental Monitoring Officers – keeping the important information flowing



Ever wondered how much rain we have had? Or if a river is rising or falling? If you look at the stats of the most viewed pages on our website – it seems to be something that interests many in our District.

Well, that's exactly the sort of information that our Environmental Monitoring team provides. Not only all things rain or river, but also groundwater levels, water quality and sea level data.

They are a team of science technicians, who collect data from our Environmental Monitoring Network that includes 26 river sites, 44 rain gauges and 57 groundwater sites across the region.

They also sample river water quality and groundwater quality, and monitor sea level and air quality. They strive for high-quality environmental data.

Some of the river stations have been recording since the early 1950s, and the region's database includes rainfall data back as far as the 1920s. The trends and cycles captured within this data set are highly valuable and they aim

to maintain the scientific record for generations to come.

The information they collect during the summer is used to make decisions for water allocation, industry supply, future water resource information and of course support river health.

Not only do they monitor our waterways as a resource, but they also monitor for recreation, enabling people to know where the safe places are to swim during the hot summer months.

On the other end of the scale, their maintenance of this environmental monitoring network ensures real-time flood flow and rainfall data are available to the community and Council to make good decisions during a flood event in the interest of public safety and asset management.

Help us stop Sabella



While owners of maritime vessels long to have their hulls in contact with a piece of the Mediterranean, there's a pest in our waters that could make this a reality for all the wrong reasons.

The Mediterranean fanworm (*Sabella spallanzanii*) is a species of marine polychaete that is native to shallow waters in the northeastern Atlantic Ocean and the Mediterranean Sea.

They were first found in Aotearoa in 2010 and have since established in several ports and sites around the country.

Fanworms can attach themselves to the hulls of yachts and ships, which enables them to establish at other coastal locations. If they spawn whilst the vessel is moored or docked in a harbour, a new population can establish.

The worm grows on soft sediments or anchors itself to rocks, jetties, pontoons or other solid surfaces. While it will grow on the hulls of moored boats, it does not usually foul frequently used vessels.

The Mediterranean fanworm is listed as an 'Eradication' species in the Tasman-Nelson Regional Pest Management Plan.

The fanworm's tentacle colour is variable, usually banded in orange, purple and white. Tubes can grow up to 40 cm long in deeper water, but they are not found at depths greater than 30 metres.

Fanworms can form dense colonies of around 1,000 individuals per m² which displace native species, such as mussels, and feed on the larvae of fisheries species.

They live inside stiff, sandy tubes that they produce from hardened mucus secreted by the worm. They protrude from the sand and have a two-layered retractable crown of feeding tentacles.

All vessel owners are required to report any sightings of Mediterranean fanworm to our Biosecurity team at 03 543 8400 or biosecurity@tasman.govt.nz.

New weighbridge for Richmond



Users of our Richmond Resource Recovery Centre will have noticed a few changes as we work through another upgrade at the Fittal Street facility.

To improve safe access to the centre, we need to install a second weighbridge to operate two lanes, and upgrade the kiosk with a toilet with hand washing facilities.

But to do this, we have had to temporarily move the kiosk to the other side of the existing weighbridge during the construction period. This means payments will need to be collected from the passenger side of vehicles. We'll have staff on site while the work's being done to guide users.

SENIORS' SECTION



Ageing positively

That famous bloke Abraham Lincoln once said "In the end, it's not the years in your life that count. It's the life in your years," and that's an aim of our regular Positive Ageing Forums.

As part of promoting positive ageing, we host regular networking and information sessions for older people in Richmond and Motueka, called Positive Ageing Forums.

The meetings are open for agencies and individuals and cover various topics such as wellbeing, housing, digital literacy and more. These events are open to everyone.



This year we are hosting five events in Richmond and five in Motueka. The first in Richmond is at 1.00 pm on Tuesday 20 February at our Council Chambers on Queen Street and the first in Motueka is on Tuesday 5 March starting at 12.30 pm, at the Over Fifties Social Hub on Pah Street.

To find out more and see when the events are happening this year, visit tasman.govt.nz/positive-ageing-forum.



Good sport – good sort

As we continue our series highlighting our community's good sorts, we want to congratulate one of Motueka's good sports, George Sturgeon, who is a recipient of an Outstanding Community Service Award. The list of George Sturgeon's commitment to rugby in Nelson Bays is impressive.

He's coached the Golden Bay Motueka under 52kg Rugby Football Team since 1996 while also taking on the team's fundraising for uniforms, game kits and all other needs.

George started playing rugby at Riwaka when he was about seven and played for the Riwaka Club until 1972.

For five seasons from 1973, George fronted for Huia Rugby Football Club before returning to the blue and white jersey of Riwaka for another couple of seasons.

In 1982, he coached six seasons with Nelson Bays Country before taking over



the Nelson Bays representative side until the early 90s, including coaching a combined Nelson Bays/Marlborough Team and playing for Scotland.

In 2002, George became Chairperson of Goodsports Motueka, a position he still holds and has had a strong hand in the super rugby games at Motueka when the Crusaders faced the Hurricanes, Auckland Blues and Highlanders.

George was born and raised in Riwaka and did a diesel mechanic apprenticeship before opening his own farm mechanic business in Motueka, where he employs four-six mechanics.

The office is administered by his wife Dee and together they have clocked up 40 years in the business.

Teamwork makes Tasman's Great Taste Trail great

Some of Tasman's Great Taste Trail users may be wondering what is happening at the Richmond Deviation / Māpua turnoff.

The Nelson Regional Sewerage Business Unit (NRSBU) is upgrading pipes. This means the trail running directly between Nelson and Richmond on the Richmond Deviation, opposite the Aquatic Centre, will be closed for up to three months.

For users to continue to travel between Nelson and Richmond on this route without major detours, two things have happened, and the Nelson Tasman Cycle Trails Trust is extremely grateful.

The Nelson Alliance plant generously granted access to the Alliance Underpass, formerly used to get stock under the road.

... And, the NRSBU has agreed to build an added piece on the trail to allow the Alliance Underpass to connect to the existing underpass.



While this route won't be as direct as riders are used to, it will mean they can still get between Nelson and Richmond without going on the road, while the work takes place.

The new trail to the Alliance Underpass on Champion Road is being sealed with asphalt.

The Alliance Underpass will become the main underpass for users wanting to go from the Coastal Route into the Champion Road area and vice versa – the good thing is this underpass does not flood at high tides and will be more direct.

Another change to this area is that entry to the Alliance Reserve is being moved to the big stump which removes the blind corner that was at this turn-off point.

WONDERFUL WATER



Motueka stopbanks work all go as programme nears completion

Work is nearing completion on the Motueka stopbanks refurbishment programme. We've been undertaking a programme of work on the Lower Motueka River stopbank network, to reduce the community's risk of flooding from the river and improve the integrity of the stopbanks.

The restoration has been staged over three phases between 2020 and 2024.

Sites completed in the last six months include:

- 260m of stopbank adjacent to the Plant and Food research centre near Riwaka has been refurbished to protect this valuable economic asset for the region.
- 200m of stopbank at Hurley Bank has been reinforced along a section which was narrow and vulnerable.
- 290m of stopbank has been refurbished along the Motueka River back channel at the confluence with the Shaggy Stream.



Debris that was deposited in the back channel from the Shaggy catchment during Cyclone Gita was also moved.

This will improve flood resilience on Peach Island in a location where the stopbanks overtopped in July 2021. Localised repairs of weak spots on the stopbanks around Peach Island were also completed.

Once the overall work is complete, it will provide the area with a 1-in-50-year level of flood protection.

Funding of \$10 million has been made available for refurbishment to improve their condition and provide additional climate change resilience.

The project has received \$7.5 million of funding from Kānoa – Regional Economic Development & Investment Unit. This funding contributes towards projects that build more resilient river communities.

Looking at land transport for a decade

Our draft Nelson Tasman Regional Land Transport Plan (RLTP) is all about collaboration, and we want your input.

We are sharing the job of managing our road network over the next 10 years.

NZTA Waka Kotahi will work on making improvements to the state highway network on specific projects such as State Highway 6 Hope Bypass and three new heavy commercial safety centres spread across the region.

They'll also work on generic activities including maintaining our sealed road network, installing median barriers on roads and minor safety improvements.

Tasman District and Nelson City Councils will deliver safer speeds determined through the joint speed management plan, including making improvements in urban areas for our most vulnerable school road users.



The councils will continue developing their networks to manage the impacts of growth and better cater for people walking and cycling while NZTA Waka Kotahi has proposed the Rocks Road walking and cycling project.

NZTA Waka Kotahi is pledging to work on improving network resilience for communities at risk of losing access in storm events and will continue to reduce the risk of landslips on Tākaka Hill and the Whangamoā Saddle with a programme of treating high-risk rock fall sites.

At the same time, we are also looking at the future of the regional public transport services in our draft Nelson-Tasman Public Transport Plan (RPTP).

Get further details and complete an online submission at shape.nelson.govt.nz/ connecting-nelson or email submissions@ncc.govt.nz or post to: RLTP and RPTP Submission, Nelson City Council, PO Box 645, Nelson 7040, Freepost 76919



ZOE BOND SENIOR ASSOCIATE

Providing practical property, business, estate planning and trust advice

03 543 8301 zbond@fvm.co.nz
265a Queen Street, Richmond
www.fvm.co.nz



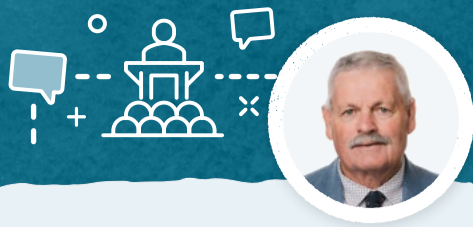




Let us manage your compliance
Sumps, interceptors and grease traps... we've got you covered!
Leading liquid waste contractor in Nelson, Marlborough and Tasman

FREEPHONE 0800 725 326
EMAIL bookings@nmwaste.co.nz

nmwaste.co.nz



Councillor Kit Maling, Richmond Ward

It's that time of the year again with adults going back to work and children returning to school with the focus on the year ahead.

At Council, we have a new CEO (congratulations to Leonie Rae on her appointment) and a 10-Year Plan to complete, and hopefully some certainty from Central Government over the future direction of Three Waters.

I hope all our residents were able to have a good break and are refreshed for the year ahead.

My wife and I were able to visit Golden Bay and I am about to head south to ride the Dunstan Trail.

Golden Bay was very vibrant with lots of visitors and Tākaka was really humming. I was able to have a good

look at the new Pōhara shared path that was being well-used, it appeared to be working great and I did not see any parking issues.

Tōtaranui was busy, but a few of the drivers I met on the road could have driven a bit better to the conditions.

A visit to Golden Bay is never complete without going up the Aorere Valley to Bainham to the Langford Store and visiting the famous Courthouse Café in Collingwood.

We are very privileged to live in an area with such outstanding places to visit and it is important that they are preserved for future generations to enjoy.

I remember first visiting Tōtaranui some 60 years ago and it is still a special place as it was then.

All the best for the year ahead.



Golden Bay Community Board

I cannot believe that it is already February. The Golden Bay Community Board is excited for 2024 and looking forward to a great year of supporting our community. I hope everyone had a wonderful Christmas and New Year; it was great to see Golden Bay so busy.

Our first job is to say a massive thank you to our Tākaka Volunteer Firefighters who did an amazing job of stopping the fire at ITM and preventing it from spreading to other buildings and homes in Commercial Street. We are lucky to have such great people in our community.

It was also fantastic to see the support that ITM and PGG Wrightson have

received from the community. A big shout out to all the staff at these two businesses for all their hard work and for ensuring that they were back up and running as quickly as possible. You are awesome.

In what was an extremely stressful and emotional time, you all kept community at the heart. We appreciate you all.

WHAT'S ON IN TASMAN



Wellby Talking Cafés

- **Tuesday 13 February, 10.00 am – 11.30 am, Tapawera Community Centre.**
- **Tuesday 13 February, 1.30 pm – 3.00 pm, Richmond Library.**
- **Wednesday 21 February, 10.00 am – 11.30 am, Motueka Library.**

Wellby Talking Cafés welcome everyone for a relaxed cuppa to start your journey connecting with others who enjoy the same things. You can pop in for a quick chat or stay for a longer conversation with friendly people. There is no need to register, just turn up on the day.

Tasman Asian Night Food Fair

Saturday 17 February, 4.00 pm – 9.00 pm, Washbourn Gardens, Richmond.

A time for connections and celebrations, vendors from the local multicultural community give the chance to taste their hand-made delectable delights. Which to choose? Try them all! Bringing together communities from widely diverse backgrounds and sharing culture through food, costumes, music and dance – a wonderful opportunity for people of all ages to enjoy. If wet, the event will be rescheduled to Sunday 18 February.

Second Hand Sunday

Sunday 18 February, 9.00 am – 2.00 pm.

Second Hand Sunday is a fun way for Nelson and Tasman residents to declutter and re-home unwanted household goods for free. If you have items you want to give away, simply register online before 10.00 am Friday 16 February to be included on the list of participating addresses. Print off a poster to put on your mailbox and put your items on your driveway at 9.00 am on the day.

A list and map of participating addresses will be available to download from 12.00 pm Friday 16 February. Check out the map to plan your fossicking route and pick up some free second-hand items!

For more information and to sign up, go to tasman.govt.nz/shs.

Stitch Bloom launch with Fleur Woods

Thursday 15 February, 5.30 pm – 7.00 pm, Motueka Library Te Noninga Kumu.

Come along to hear all about Stitch Bloom's origins and purpose and take a sneak peek at the beautiful blooms that are to be lovingly stitched together in this collaborative embroidery project. Free to attend.

Sunanda Trotter book launch: Call of the Light

Friday 16 February, 1.00 pm – 2.00 pm, Tākaka Library.

If you are curious about the experiences of transcendence, that take us into our deepest nature of profound loving and wisdom consciousness, then come along. Free to attend.

Author talk – Annika Ohlson-Smith

Tuesday 20 February, 1.00 pm – 2.00 pm, Richmond Library.

Published poet, short story writer and novelist Annika Ohlson-Smith will be joining us to share how an idea can become a poem, short story or even a whole novel. Free to attend.



NEWSLINE NOTICES



Sign up for Nelson news

Live in Tasman but want to hear about the latest news, information and events happening in Nelson City? Subscribe to Nelson City Council's *Our Nelson* newsletter and stay up to date with Nelson City news. To sign up, go to our.nelson.govt.nz/subscribe.

Rural sports funding – apply now!

Live rural and need a little help participating in sports? The Sport NZ Rural Travel Fund offers help with travel costs for rural sports clubs and rural school teams. The fund helps young people aged 5 – 19 participate in local sports competitions. This round of funding is open until Tuesday 30 April. Head to tasman.govt.nz/grants for more information and to apply.

Be in the know with Antenno

Did you know we're using a free mobile app called Antenno to send you alerts and notifications about places and topics you care about – like reminders about recycling or road closures?

There are two ways you can use Antenno: receive notifications from us about the places you have marked as important to you or report back to us on issues or feedback.

Antenno lets you choose the places you want to be alerted about, so you're not being alerted about things that don't affect you. You can have multiple "places" which could be the area you live in, work or go to school, for example.

For reporting issues, the app conveniently adds the location to a photo so we can log the problem, including a description of it and your contact details. It's an easy way to get in touch with us.

Antenno is simple and easy to use, and no personal information or log-on details are required. Download it for free from the app store on your phone.

Council hui

Meetings will take place in person and via Zoom. For details, the Zoom link and recordings of previous meetings visit tasman.govt.nz/meetings-calendar. Unless otherwise stated, all meetings will be held at Council Chambers, 189 Queen Street, Richmond.

Golden Bay Community Board

Monday 12 February, 1.00 pm. Tākaka Office, 78 Commercial Street.

Tasman District Council

Thursday 15 February, 9.30 am.

Joint Nelson Tasman Regional Transport Committee

Tuesday 20 February, 9.30 am.

Motueka Community Board

Tuesday 20 February, 4.00 pm. Motueka Library, Wallace Street.

Enterprise Committee

Wednesday 21 February, 1.30 pm.

Operations Committee

Thursday 22 February, 9.30 am.

THINK PLAN DO

Engineers / Surveyors / Planners

Level 1, 42 Oxford Street
Richmond 7020
0800 999 333

nelson@do.nz
www.do.nz

Land Surveying / Resource Management
Environmental Science / Geotechnical Engineering
Civil and Structural Engineering

do DAVIS OGILVIE
ENGINEERS / SURVEYORS / PLANNERS