



NEWSLINE

PĀNUI

26 JANUARY 2024
ISSUE 562



Hundreds have a say on speed management

People are keen to make their views known on the proposed draft Nelson Tasman Speed Management Plan.

Consultation on reducing local speed limits is continuing but we need to acknowledge the change in Government policy, particularly as any changes need NZTA Waka Kotahi approval.

Councils are still able to reduce harm on our roads through speed management plans and infrastructure improvements.

The Government hasn't set new rules for setting speed limits yet, but it has indicated a desire that, in addition to safety, the economic impacts and the views of road users

and local communities should be considered when speed limits are set. This is what we are doing and we still want to hear from road users and local communities before making any final decisions.

So far more than 700 people have shared diverse views across the District, particularly in rural areas and in relation to speed limit changes around schools and town centres.

We encourage people to provide feedback on the options and on areas that concern them the most.

It is fantastic to have local input so we can tailor the speed management plan to reflect what the community wants.

The current Speed Management consultation is set to close on Thursday 29 February with the Joint Regional Transport Committee making its recommendation to Tasman District and Nelson City Councils in the following months.

Have your say at
shape.tasman.govt.nz/speed-review

Tell us what you think Richmond

Another two Richmond Streets for People pilot layouts have been down for a while and now we're looking for feedback from users and the wider community.

New road layouts have been installed on Champion Road, and Queen Street between Salisbury Road and Hill Street.

Our post-construction feedback survey is now live on our Shape Tasman website.

The survey will be open until the middle of February so we can gather the views of as many people as possible. We want to know what things people love and what people dislike, and why.

Once that feedback has been gathered and collated, we will use it to guide us on what changes or improvements may be needed in the future.

Make your voice heard by picking up a survey from our Richmond Service Centre, or fill them out online at:

- shape.tasman.govt.nz/queen-st-survey
- shape.tasman.govt.nz/champion-rd-survey



TRANSPORT TALES



The future of regional transport is under the microscope

We are looking for your input on two plans that will guide the direction of this region's transport needs during the next decade.

The draft Nelson-Tasman Regional Land Transport Plan 2024 – 2034 (RLTP) and the Nelson-Tasman Regional Public Transport Plan 2024 – 2034 (RPTP) are open for submissions until Sunday 25 February.

The Regional Land Transport Plan (RLTP) is a critical document for Nelson Tasman as it underpins all the region's road network and transportation planning, as well as the investment priorities over the next ten years on both the state highway and local road networks.

It highlights the key issues we're facing over the next 10 years focusing on supporting economic and population growth; improving safety, travel choice and resilience and making an increased investment in maintenance.

The Nelson-Tasman Public Transport Plan (RPTP) sets out what public transport looks like for the region, and what is proposed for ongoing improvement in the wider Nelson Tasman area over the next 10 years.

It looks at delivering a public transport system that builds on the change created by the introduction of eBus services.

The first three years will review the new eBus service using feedback to inform potential adjustments and improvements to services.

From 2027, the focus will be on the wider public transport service, things like additional regional services, increases in peak hour frequencies, priority lanes and signals etc.

You can complete an online submission at shape.nelson.govt.nz/connecting-nelson, email submissions@nelson.govt.nz or post to: RLTP and RPTP Submission Nelson City Council PO Box 645 Nelson 7040 Freepost 76919



Help us plan for the future of parks and reserves in Richmond and Lakes/Murchison

Tasman is lucky to have so many open spaces available for everyone to use – for recreation, a bit of relaxation, or spending some time outdoors with friends and whānau.

We're proud of the places we oversee across the District, and we want you to enjoy each visit to our parks and reserves.

The Reserve Management Plans (RMPs) for Richmond and Lakes/Murchison Wards are due for a refresh, and we need your help to bring them up to date.



The first RMP for Richmond Ward was adopted in 1999, and the Lakes/Murchison Ward RMP was adopted in 2005, so it's time we reviewed these to make them fit for purpose.

This is your chance to let us know how you would like to see parks and reserves in both Wards managed in the future.

Between now and 28 March 2024, we will be collecting your feedback – be sure to let us know which reserves you use regularly, what you value most about them, and any changes you would like to see to the way they are used or managed.



FUTURE FOCUS

How to get involved

More information about the reserves being reviewed is available on our website, and you can also submit feedback online. Visit shape.tasman.govt.nz/rmp-reviews.

You are also welcome to submit written comments and suggestions via post to:
c/- RMP reviews
Community Policy Team
Tasman District Council
Private Bag 4
Richmond 7050

Māpua Masterplan options up for discussion this February

Following the great response from the community, we are moving forward with the next step in the process of developing a masterplan for Māpua.

We're extremely grateful for the support given and the feedback provided during our initial round of engagement, which included a busy two days of drop-in sessions in September 2023.

Key issues include, among other things, a requirement for more housing options, more business land and improved walking and cycling connectivity.

Through the 1000 pieces of feedback provided, staff have processed and analysed your comments.

Very soon, we will be taking a range of options out to the community for further discussion.

It is important to clarify that nothing has been pre-determined at this stage and that any suggestions that we are putting forward are only options for consideration.

We are now preparing for the second round of engagement which will take place at the Māpua Community Hall, 72 Aranui Road, on the following dates:

- Saturday 10 February, 10.00 am – 3.00 pm.
- Thursday 29 February, 2.00 pm – 8.00 pm.

Your support is important in helping us address the issues and opportunities that have been

presented. We will also welcome your feedback via our Shape Tasman page.

From here, we can produce a final masterplan that reflects the views and aspirations of the Māpua community, and which will be implemented through methods such as plan changes and 10-Year Plan funding.

We are looking forward to seeing you at the February sessions. Look out for more information in the coming weeks or go to shape.tasman.govt.nz/mapua-masterplan-2023.





COOL COMMUNITIES



Pedal for a free brekkie

Someone once said there's no such thing as a free lunch, but little did they know there is such a thing as a free breakfast – especially if you ride a bike!

Our popular Bikers' Brekkies are back for 2024 in Richmond and Motueka.

If you're in Richmond and cycle to work or school on Thursday 8 February, you can call in to grab a free breakfast as your reward. Stop in between 7.30 am and 9.00 am at Sundial Square on Queen Street, Richmond. There'll be free coffee or hot chocolate for the first 80 cyclists too.

If you're a rider in Motueka on the following day, Friday 9 February, join us on the cycleway beside the Rec Centre also between 7.30 am and 9.00 am.

At both sites on both days, we'll have a yummy breakfast of fresh fruit, a choice of sweet or savoury muffins and/or Pic's Peanut Butter Slugs to fuel the rest of your journey.

Plus, there will be free bike checks and other giveaways.

Remember cycling is good for you and good for the planet – get on your bike and join our breakfast cycling celebrations.

Community and collaboration at the heart of Emergency Management

Nelson Tasman Emergency Management says it's important that communities know how to respond to disasters, such as wildfires or floods.

Communities have unique needs and considerations that often only their own customised plan can address.

Group Welfare Manager Kathy King says people often don't think about being prepared for an emergency until one happens, and then it's too late.

"We can all see the drying conditions out there. While we're working closely with Fire and Emergency NZ to be prepared for wildfires, people need to be empowered to work together. The idea is that when a community has a plan, they can take appropriate actions for any disaster, including fires."

She says if your community hasn't already got a plan, get onto it now.

As residents found out after the Lake Ohau fires in 2020, their plan saved lives.

"Those fires were sudden and devastating but because the community had a plan, no lives were lost."

Nelson Tasman Emergency Management has a Community Emergency Preparedness Plan template and accompanying guide to help your community get prepared. Communities in valleys, or rural pockets are ideally suited to working together to create a plan.

Aniseed Valley residents have identified their main risks and are working with FENZ to find evacuation routes and proactive ways to keep themselves safe.



For further information contact Kathy King, Group Welfare Manager for Nelson Tasman Emergency Management, at em.admin@ncc.govt.nz or Fire and Emergency New Zealand.

Pictured above: Kathy King and Aniseed Valley resident Dave Phillips.

Grateful for Grandma Sheila

Every year a select assortment of Tasman's unsung heroes is singled out for special recognition.

Their good deeds and community spirit are rewarded in our Outstanding Community Service Awards.

Each year, we put the winners in the spotlight in a series of articles sharing with you what they do. This time we meet Sheila Budgen from Motueka.

Sheila has been a much-loved volunteer crew member on the Spirit of Adventure Trust's youth development sailing ship the Spirit of New Zealand for more than 25 years, amassing more than 1000 days at sea.

She's affectionately known as Grandma and is regarded as a safe person to talk to onboard the ship.

Coaxing and encouraging even the most disengaged teens to connect with the programme, Sheila has

helped many young people, from all sorts of backgrounds, steer towards a positive future after a life-changing voyage on the Spirit of New Zealand.

Sheila even jumps into the ocean with the teens at 6 o'clock in the morning year-round for the mandatory resilience-building swim.

However, for Sheila/Grandma, it isn't just the fun parts of the trips away that she gives up her time for, she's also helped with refits of the old sailing vessel, helping with all the yucky jobs.

Back at home, she helps raise funds locally to help youth from the Tasman area access the trip of a lifetime.



Get your skate on

It's time to show the world the best of what you've got in our annual Skatepark Series.

This is a great chance to show off skateboard, BMX and scootering skills and compete against other contestants from around the District.

Events kick off next month and run through into March. The competition will visit the all new and improved Motueka Skatepark, McGazzaland in Wakefield, the Richmond Skatepark at Jubilee Park and Nelson Skatepark at Neale Park.

There will be a fundraising BBQ at each event hosted by Skate Nelson Bays, a subsidiary group of the Nelson Host Lions Club. Proceeds will go towards ongoing work done by Skate Nelson Bays to improve wheel sports facilities and host more fun events around the region.

You can enter on the day of each competition. Helmets are compulsory for all competitors. The categories are skateboard, BMX bikes/bikes and scooters, with various age groups: Girls (open), Junior (12 years and under), Intermediate (13 – 17 years) and Open (18 years and older).

All events kick-off at 12.00 pm sharp with registration open from 11.00 am each day. Lock in these dates and places:

- Motueka Skatepark – 10 February
- McGazzaland Wakefield – 24 February
- Richmond Skatepark – 9 March
- Nelson Skatepark – 23 March

For other events happening across the region this summer, check out our Summer Events Guide: tasman.govt.nz/summer-events-guide.



We're keeping an even keel on boat ramp considerations

The Māpua waterfront boat ramp initiative has taken another step forward with the Māpua Boat Ramp Community Trust's resource consent application being notified by the Council.

As with the majority of community assets, we have provided financial support via Reserve Financial Contributions collected through development in the ward. Any further funding will only be granted if there is a positive outcome for the Trust, who will also have to provide at least a third of the total cost of development.

As the regulator in this process, we are encouraging feedback to assist in the making of an informed decision regarding the Māpua Boat Ramp's future.

The outcome of any resource consent application relies on all views submitted by the public being given equal consideration – without favour – to achieve a fair decision.

The application and supporting material can be viewed on our website or at any Council service centre or library. Submissions close 5.00 pm Monday 26 February 2024.

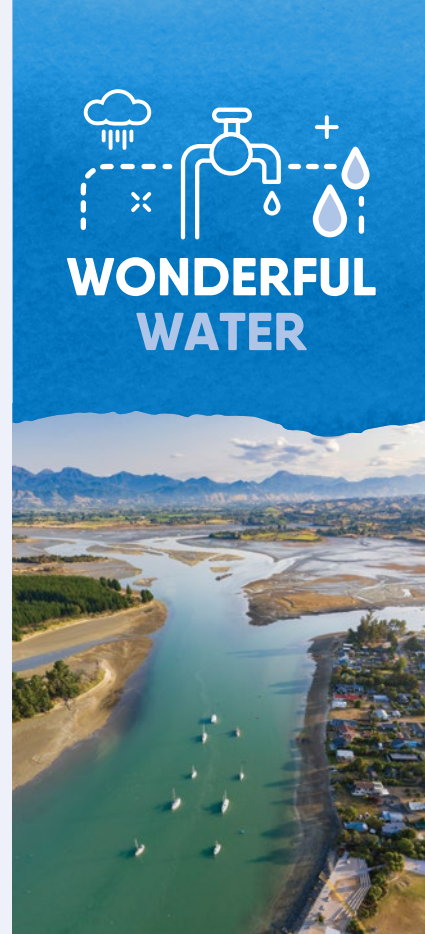
Publicly notified resource consent application – RM230253 and Ors

Proposal by Māpua Community Boat Ramp Trust for the construction and operation of a new boat ramp within the coastal marine area and foreshore, with access from the Māpua Waterfront Park and associated consents for access and parking on the western side of Tahī Street, signage, stormwater discharge and earthworks. The proposal also includes the construction of a Sea Scout / Community building within the Māpua Waterfront Park. The site might also contain contaminated soil.

The subject site includes 5, 11 and 6-16 Tahī Street, Māpua, and is zoned Recreation, Open Space, Residential and Coastal Residential under the Tasman Resource Management Plan.

This application is publicly notified at the request of the applicant. This is a summary notice only.

On our website, you will find the full public notice, the application with details of the specific resource consents applied



© Oliver Weber, www.nelsontasman.nz

for, the assessment of environmental effects and supporting information. Visit tasman.govt.nz, search "Mapua boat ramp".

Any person may make a submission on the applications under section 96 of the Resource Management Act 1991. You will find submission forms on our website and at our offices. Details of how to lodge a submission are also on our website.

Submissions close 5.00 pm Monday 26 February 2024.

Algae makes summer presence seen at Wai-iti

It's time to remind everyone to be aware of toxic algae in our rivers and the risk to dogs and potentially those playing in the river if they are not careful to avoid it.

Toxic algae coverage in the Wai-iti River has now exceeded 20 percent, and we have recently recorded around 16 percent coverage at the Meads Bridge section of the Lee River. Signage has been put up at several locations around the Lower Waimea and Wai-iti Rivers, as well as Pigeon Valley Road, to alert those travelling within the vicinity of the river.

Please be vigilant and familiarise yourself with what the toxic algae looks

and feels like – particularly if you're a dog owner or a parent with toddlers.

This alga is natural and occurs during extended periods of low flow in rivers. It is black and forms gelatinous mats on the riverbed. It can also have a distinctive musty smell which is attractive to dogs. However, it is usually only a problem if the dog eats it.

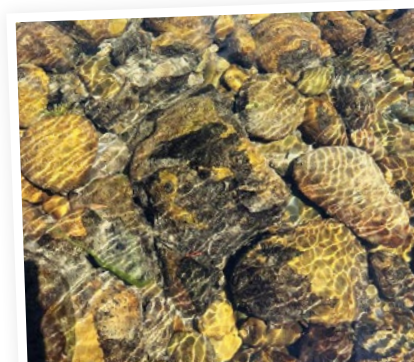
If you do see any of this alga, it would be wise to put your dog on a lead, and we strongly advise preventing your dog from scavenging, or playing in or near the water if the alga is present.

If you, your dog or other animals are sick after being in or near the

affected river, consult your doctor or vet immediately.

We are continuing to monitor other river areas across the District over summer and will update if algae are found elsewhere.

Find more information at tasman.govt.nz/toxic-algae.



Mudcakes and Roses now living its 'Best Life' in new publication

Missing *Mudcakes and Roses*? Fear not – there's a new magazine available to meet the reading needs of our vibrant 50-plus age group.

For more than a decade and hundreds of issues, *Mudcakes and Roses* was our dedicated publication for the senior generation.

However, like the change of seasons, all things must pass and a hard decision to discontinue the magazine was made last year.

Those lamenting the absence of some worthwhile content from coffee tables and waiting rooms around our region have not had to wait long for the gap in the market to be filled.

Best Life is a new publication that picks up where *Mudcakes and Roses* left off, bringing its own fresh take on celebrating everything

great about the 50-plus years, informing and educating those of us embracing the senior life in a style as spirited as the target audience.

Published by Top South Media – who also publish *Waimea Weekly*, *The Guardian Motueka* and *Top of The South Farming Monthly* – *Best Life* was first published in November 2023.

It will be published bi-monthly and produce six issues annually.

Whether it's inspirational stories, reader recipes, financial advice, health, local history or quizzes, you'll find something of interest – all written by locals like yourself.



SENIORS' SECTION



Tasman District Council will also be a regular contributor to future issues, sharing events, initiatives and general information that interests and benefits the growing population of people that make Tasman special.

Positive Ageing Expo – registrations open now!

The Positive Ageing Expo will be back in 2024, showcasing the recreational, health and social services available in Nelson Tasman to make ageing a positive experience.

The expo is on Saturday 6 April, from 10.00 am until 2.00 pm at the Headingly Centre in Richmond.

The Positive Ageing Expo has run since 2008 and attracts an average of 2000 people each time.

Registrations are now open for stall holders. If you are part of a community group, agency or organisation that can make a positive impact on our ageing population, make your presence felt at the Positive Ageing Expo.

If you want to have a stall at the expo, register on our website at tasman.govt.nz/positive-ageing-expo or contact our Community Partnerships Co-ordinator Lani Evans at lani.evans@tasman.govt.nz or 03 543 8461 by Sunday 3 March.



Surveying and Resource Management

- Subdivision Design and Management
- Resource Consents and Planning
- Land Development Engineering
- Project Management

81 Selwyn Place, Nelson
Phone 03 548 4422
staigsmith.co.nz



New Pōhara playground pleases

Golden Bay's young people and those visiting from out of town are now enjoying new and improved playground equipment at the Pōhara Top Ten Holiday Park thanks to a joint effort.

The old play gear had seen better days and was ready for replacement, so we got together with the operators of the camp and hatched a plan to create an exciting new playground.

The bright shiny new equipment was installed in time for the busy

summer period and has turned out to be a very popular place to play.

The Pōhara playground includes various swings, several slides and an array of climbing challenges, and best of all, because it's a public playground it's available to be used by the whole community.

Interested in being on our District Licensing Committee?

Can you provide a measure of fairness around our liquor licence decision-making process?

We're currently seeking expressions of interest for positions as list members of the Tasman District Licensing Committee.

This Committee is responsible for considering, then issuing or declining licence and manager certificate applications and renewals under the Sale and Supply of Alcohol Act 2012.

Members will be required to sit for at least half a day every month to hear matters that the full committee must be involved with.

The role requires a thorough understanding of licensing

processes prescribed by the Sale and Supply of Alcohol Act 2012, and applicants should have a suitable knowledge of the formal hearing process involved.

However, the position is not one of advocacy and applicants will be required to demonstrate that no conflict of interest exists with the proposed role, and current or past activities or interests.

The position also requires highly developed decision-making skills, investigative ability and excellent writing skills.

Expressions of interest close at 4.00 pm on Friday 2 February, and should include a CV detailing previous involvement in similar work and a registration of interest letter.

A description of the role and responsibilities is available on request and your completed documentation should be sent to: Daniel Winter
Team Leader Environmental Health
Tasman District Council
Private Bag 4
Richmond 7050

Alternatively, phone 03 543 8488 or email daniel.winter@tasman.govt.nz.



G.J. Gardner. HOMES

NEW SHOWHOMES OPEN 1PM - 4PM DAILY

48 & 50 Summersfield Boulevard, Richmond

Proud to be sponsoring:

OFFICE 195 Queen Street, Richmond
CONTACT 03 543 9502 | 0800 42 45 46
OFFICE OPEN Monday to Friday, 9am - 5pm
www.gjgardner.co.nz

Tasman ahead of the game on recycling changes

There are some nationwide changes coming in the world of recycling from 1 February, but nothing will change for us here in Tasman.

From that date, all councils across the country providing domestic kerbside recycling collections must collect the same items for recycling, which is something we've been doing for a while.

By doing this, the government intends to reduce confusion about what can and can't be recycled and improve the percentage of items being recycled.

Do you realise that in Aotearoa New Zealand only about a third of materials are recycled, and the rest goes to landfill?

But here in Tasman, the good news is we're ahead of the game and already meet the new national standards by collecting plastics 1, 2 and 5, cans, glass containers and paper/cardboard.

Lids continue to be excluded from kerbside collections because they can trap liquids and foods and are usually too small to make it through the sorting process.

For full details of what can and can't go out in your recycling bins, check out our website tasman.govt.nz/recycling.



Waste minimisation project funding available

Don't let your good idea for rubbish go to waste – We may be able to help fund it!

Our Waste Minimisation Projects Grants may be available to support your innovative waste reduction project.

As well as reducing waste, these grants are intended to support community engagement and education and get people to:

- Rethink how to use and value resources to avoid the creation of waste;
- Reduce the amount of waste created;
- Reuse resources;
- Recycle or recover materials.

The grants also aim to support our Tasman communities to show kaitiakitanga (guardianship) of our natural resources.

They are designed to support larger-scale projects, with earlier grants averaging close to \$10,000 and ranging between \$5,000 to \$30,000, depending on the scale of the project.

The money will generally be given as a one-off grant to help groups or organisations deliver an enduring and self-sustaining waste minimisation initiative.

Funds can be used for things like project set-up and/or running costs, capital costs like the purchase of tools or equipment, running costs, including wages, and monitoring and evaluation of the volume of waste diverted from landfill.

You can see full details of how to apply for this grant and check

out other smaller-scale waste minimisation grants for schools, community projects and events on our website. Visit tasman.govt.nz/waste-minimisation-grants.

The deadline for Waste Minimisation Projects Grants applications is Sunday 31 March.





Motueka Community Board

As we start a new year in 2024, I would like to congratulate Terina Graham on being elected as the Motueka Community Board Chair.

Being the Motueka Community Board Chair for six years between 2016 and 2022 was an honour and privilege for me.

When elected as a Councillor in 2022, I was reappointed to the Board as one of the three Motueka Ward Councillors, and then undertook the role of Chair again for about six months.

The Board has a key role in advocating to Council and to be both a Councillor and Board Chair brought conflicting challenges. In one case, seeking feedback from the Board as a Councillor, and in another case giving feedback to Council as the Board Chair.

Traditionally the role of Chair is held by one of the Community Board elected members and not a Councillor, and I can now see why this has been the case.

So please know that I continue to be on the Motueka Community Board as one of the Motueka Councillors, and will continue to be available for residents to contact me, but I will no longer chair the Motueka Community Board.

I know the headlines of "Community Board Chair resigns" didn't capture the entire story, so I hope this reassures you that I remain committed to Motueka and the region of Tasman.

Happy New Year!
Brent Maru

Councillor Barry Dowler, Motueka Ward



Happy New Year. I hope you had an enjoyable time over the festive season.

Council staff are back into it and already under pressure to meet the deadlines for the release of the draft 10-Year Plan in April this year.

It is important that we hear from you, especially about the things you like or dislike with what is being proposed. It's a complex situation with the new Government having to get its changes notified to us so we can comply with their guidelines and statutory requirements.

Also, at present we are looking for your thoughts on our Speed Management Review. Central Government has

stopped the process that was in place, but it is particularly important that we hear from anyone who wants to see safer speeds in certain areas of our District.

We will be making a case to the Minister of Transport so changes that have been requested over the last few years may be able to happen.

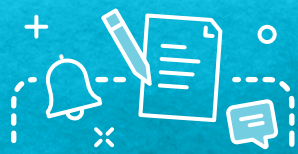
We understand that speed limits around schools will remain mandatory from the Government. Thursday 29 February 2024 is the last day for feedback.



Also, we are looking for feedback on the Reserve Management Plans for Richmond and Lakes/Murchison Wards – this closes on Thursday 28 March.

Looking further ahead, we have a proposed Cat Bylaw, a review of the current Dog Bylaw and submission hearings for the draft 10-Year Plan which will happen in May.

Your input is vital on all of these. Please be part of it. You'll find full details at shape.tasman.govt.nz.



NEWSLINE NOTICES

Public holiday hours and services

On Nelson Anniversary Day, Monday 29 January, and Waitangi Day, Tuesday 6 February, all service centres and libraries will be closed for the day. Usual opening hours apply otherwise. We are always here to help when needed, call 03 543 8400 anytime.

There are no changes to the rubbish and recycling collections. All our resource recovery centres will be open as normal.

The eBuses on Routes 1, 2, 3 and 4 will be running, but on a reduced timetable. Routes 5 and 6 will not run on a public holiday. When viewing the timetables at ebus.nz select the holidays tab to see the schedules.

Mārahau to Kaiteriteri sea swim

Water users in the Kaiteriteri and Mārahau coastal areas are being advised of a sea swim event in February.

Our Harbourmaster has granted permission for a sea swim from Mārahau to Kaiteriteri on Saturday 10 February 2024, between 10.30 am and 1.00 pm.

The swimming event will be on a 4.4 kilometre course leaving from Mārahau before heading south past Split Apple Rock, inside Ngaio Island and finishing at Kaiteriteri.

The route will be covered by support vessels and the Harbourmaster will also be on hand.

All water users are asked to avoid the area during the event and be aware of many sea swimmers in the water.

Have you got an awesome art idea?

Our Creative Communities Scheme has funding available to help groups and individuals with arts projects in Tasman – anything from music, theatre, festivals, mural painting, outdoor sculptures, art in public spaces, kapa haka, singing, art workshops and more. Funded by Creative New Zealand, the Creative Communities Scheme is designed to support opportunities for communities to participate in the arts. There is a focus on art projects that have broad community involvement, involve young people or support the diverse arts and cultural traditions of local communities. Visit tasman.govt.nz/creative-communities to find out more and apply by Sunday 10 March.

Proposed temporary road closures



Applicant: Nelson Car Club.

Event: Sandy Bay Hill Climb.

Location: Sandy Bay, Mārahau Road.

Date and time: Sunday 7 April 2024, 7.00 am – 5.00 pm.

Applicant: Tasman School Board of Trustees.

Event: Muddy Buddy – Fundraising Event.

Location: Aporo Road between Dicker Road and Baldwin Road, Tasman.

Date and time: Sunday 17 March 2024, 10.00 am – 3.00 pm.

Applicant: Motueka RSA.

Event: ANZAC Day Parade.

Location: Pah Street, Motueka – Pah Street from Bennett Street north to Countdown carpark, 6.15 am – 7.30 am from Talbot Street north to Countdown carpark.

Date and time: Thursday 25 April 2024, 6.00 am – 7.30 am.

Applicant: Motueka RSA.

Event: ANZAC Day Parade.

Location: School Road, Riwaka – from the intersection SH60 to 12 School Road.

Date and time: Thursday 25 April 2024, 8.45 am – 9.30 am.

Applicant: Golden Bay RSA.

Event: ANZAC Day Parade.

Location: Commercial Street, Tākaka – from number 19 to number 81 Commercial Street.

Alternate route: Motupipi Street, Junction Street and Reilly Street.

Date and time: Thursday 25 April 2024, 8.30 am – 10.30 am.

Applicant: Nelson RSA.

Event: ANZAC Day Parade.

Location: Aranui Road, Māpua – from Higgs Road to the tennis courts.

Date and time: Thursday 25 April 2024, 10.30 am – 11.30 am.

Applicant: Richmond/Waimea RSA.

Event: ANZAC Day Parade.

Location: Queen Street – from Sundial Square to McIndoe Place. Cambridge Street – from Oxford Street to Queen Street. Oxford Street – from Wensley Road to Gladstone Road (SH6). As Queen Street will be closed the bus will have a temporary bus stop set up on Talbot Street outside Pak'nSave.

Date and time: Thursday 25 April 2024, 10.00 am – 12.30 pm.

Applicant: Richmond/Waimea RSA.

Event: ANZAC Day Parade.

Location: Whitby Way, Wakefield – from Edward Street to Wakefield carpark entrance.

Date and time: Thursday 25 April 2024, 9.00 am – 12.00 pm.

Objections close 5.00 pm Friday 9 February 2024.

Please send any objections to tania.brown@tasman.govt.nz.

Council hui

Meetings will take place in person and via Zoom. For details, the Zoom link and recordings of previous meetings visit tasman.govt.nz/meetings-calendar. Unless otherwise stated, all meetings will be held at Council Chambers, 189 Queen Street, Richmond.

Community Grants Subcommittee

Thursday 8 February, 1.30 pm.

No public forum.



WHAT'S ON IN TASMAN

Summer Movies Al Fresco

- Friday 26 January, *One Hundred and One Dalmatians*, Washbourn Gardens, Richmond.
- Sunday 4 February, *Whina*, Decks Reserve, Motueka.
- Friday 23 February, *Paddington 2*, Village Green, Ellis Street, Brightwater.

A great collection of movies screened in parks across the region. Gather a group, a picnic, load up the couch and join us from 7.30 pm to play giant board games, talk with each other and watch the regions' glorious summer sunsets. Movies start at dusk. \$2 adult, \$1 child.

If it looks like rain, please text 'Is it on?' to 022 406 1665 after 7.30 pm on the night. For up-to-date details see nelsonsummer.nz or the Summer Movies Al Fresco Facebook page.

The Magic of Photography

Monday 29 January – Sunday 25 February, Motueka Museum.

Come and check out the Motueka Museum's latest exhibition featuring recent photos by the Motueka Camera Club.

Author talk: Julia Panfylova "The World of Alien Words"

Wednesday 31 January, 1.00 pm – 2.00 pm, Tākaka Memorial Library.

Unravel the secrets of alternative publishing methods with local children and young adults writer Julia Panfylova. Free to attend.

Wellby Talking Café

Wednesday 7 February, 1.30 pm – 3.00 pm, The Wholemeal Café, Tākaka.

Come for a relaxed cuppa and start your journey connecting with others who enjoy the same things. You can pop in for a quick chat or stay for a longer conversation with friendly people. There is no need to register, just turn up on the day.



How To Look At Art

Thursday 8 February, 1.00 pm – 2.00 pm, Richmond Library.

The Suter Art Gallery's Curator Kyla MacKenzie will be bringing a mystery item from their permanent art collection for a special show and tell for art lovers. Free to attend.

Second Hand Sunday

Sunday 18 February, 9.00 am – 2.00 pm.

Second Hand Sunday is a fun way for Nelson and Tasman residents to declutter and re-home unwanted household goods for free.

If you have items you want to give away, simply register online before 10.00 am Friday 16 February to be included on the list of participating addresses. Print off a poster to put on your mailbox and put your items on your driveway at 9.00 am on the day.

A list and map of participating addresses will be available to download from 12.00 pm Friday 16 February. Check out the map to plan your fossicking route and pick up some free second-hand items!

For more information and to sign up, go to tasman.govt.nz/shs.

Maritime event

Under the provisions of the Navigation Safety Bylaw 2015, the Harbourmaster has granted authorisations for this event.

Event activity: Research Buoy.

Date: January – February 2024.

Location: Tasman Bay, 2km off Moturoa / Rabbit Island.

Further details and any new events can be viewed at tasman.govt.nz/maritime-events.



Is your water safe?

Get the best from your water, take the worst out of it!
Water purification / Filtration / UV sterilisers / Water softening

Water testing service available

thinkwater.
TASMAN BAY

03 528 8888



NELSON
MARLBOROUGH
WASTE

Sumps, interceptors...

Regular cleaning and removal of sediment and contaminants is essential. Join our Regular Service Scheme.

Grease traps / Sumps / Septic tanks / Waste oil / Hazardous waste

FREEPHONE 0800 725 326

EMAIL bookings@nmwaste.co.nz

nmwaste.co.nz