



Have your say on speed

The way speed limits are set has changed. Speed limits are now set through a Speed Management Plan. A Speed Management Plan sets the direction for 10 years with an implementation plan reviewed every three years.

Regardless of the cause of a crash, speed is the difference between someone being able to walk away relatively unharmed or being seriously injured or killed. Vehicles speeds also impact how safe people perceive our streets to be, which affects whether they feel safe walking, scooting or biking around their neighbourhood, to school or the shops.

Not all roads are created equal. Speed limits should reflect the type of road or street, and the function they have for our community who live along them, and drive, walk, scoot, or bike on them.

In many areas across Nelson and Tasman, we have heard that there is support for more appropriate speed limits, and now there is an opportunity to bring all views together into a plan.

The Nelson Tasman Regional Transport Committee is consulting on a draft Speed Management Plan to come into effect in 2024. This is your opportunity to influence road safety with input into the appropriate speeds on the whole transport system across Nelson and Tasman.

We know there is no 'one size fits all' option for urban, rural, and rural residential areas. By supplying a range of options, we will have the flexibility to tailor the outcome, taking on board the views of the entire community.

Find out more and have your say on Shape Tasman by the end of February 2024.

Still have questions? Join a webinar on Tuesday 5 December at 7.00 pm and ask our team.

Visit shape.tasman.govt.nz/speed-review.

WONDERFUL WATER



Waimea Dam awaits much-needed rain

The construction of the Waimea Community Dam is almost complete, and the reservoir is filling in controlled stages.

As at 17 November, the dam was holding just over 3.5 million cubic metres of water with the maximum capacity of the dam at about 13 million cubic metres.

As the reservoir fills, the dam's water level is kept at hold points for extended periods to allow for testing and engineering measurements on the dam structure. Once the dam's performance at that stage is assessed and verified, the reservoir level is built up to the next hold point. To date, the dam has passed three of four monitoring stages and is performing as expected.

However, the region's dry spring weather means there has not yet been enough rain to keep up the momentum of filling the reservoir. If the dry weather continues, based on the current average rainfall, the reservoir may not fully fill until January/February 2024. This will push back 'practical completion' of the dam one month to February 2024.

Options for how the partially filled dam could provide some service and storage throughout the predicted dry summer are being explored. The dam will continue to release the required minimum flow into the Lee River to maintain its health.

Tasman Mayor Tim King said even a partially filled dam will provide benefits during a very dry summer, as the dam has been constructed to meet the demand for 100 years' worth of irrigation and urban needs – not all of which is currently required.

Meanwhile, the lack of rain does not impact the budget, with the cost forecast remaining at \$198.2 million.

Keep up with the latest news at waimeawater.nz or facebook.com/waimeawater.



MONEY MATTERS



Tasman's 2022/2023 year summarised in Annual Report

Our 2022/2023 Annual Report was adopted by the Council in October, outlining our overall performance for the year covering 1 July 2022 to 30 June 2023.

We have successfully continued to deliver essential services and projects to the community, during a time of significant legislative, economic and political change and uncertainty. Late in 2022, the management challenges were then pushed to the side as an atmospheric river event brought five days of heavy rain, causing flooding, evacuations, and significant damage to infrastructure.

While all of that was going on, we were able to fully achieve or nearly achieve 73% of our performance targets and successfully progress and complete several key projects across the District.

We delivered new water treatment plants to enhance the safety and quality of drinking water in the settlements of Motueka, Pōhara, and Dovedale.

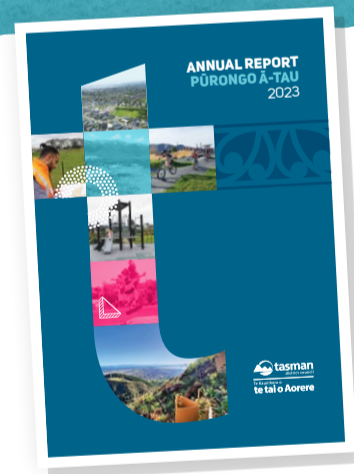
Getting around our District took another step forward as the Walking and Cycling

Strategy slowly became a reality and the infrastructure was put in place for the new regional bus service.

The Golden Bay Grandstand officially opened in January 2023. The Motueka Library / Te Noninga Kumu celebrated its first birthday, enjoying increased patronage and a number of national awards.

Despite the challenges we faced, we were able to end the year with a financial operational surplus as planned, which we use to fund our ongoing costs and future capital projects. The net external debt position of \$201.2 million was below the planned forecast debt of \$238.6 million, with rates revenue increases also remaining within the agreed cap of 5.05%.

The full Annual Report can be found at tasman.govt.nz/annual-reports.



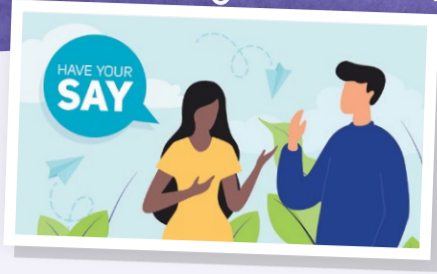
FUTURE FOCUS



Help us shape Tasman

Right now, across Tasman, we are looking for your input on a diverse range of topics as we review various bylaws and develop plans.

- **Public Places Bylaw** – our Trading in Public Places Bylaw has lapsed, and we are proposing replacing it with a more general Public Places Bylaw which aims to streamline several processes.
- **Dog Control Bylaw review** – we’re gathering early feedback to help guide the review of our Dog Control Bylaw. Your feedback will help form a draft bylaw for consultation in mid-2024.
- **Proposed Cat Management Bylaw** – we’re gathering early feedback to help guide the drafting of a Cat Management Bylaw. We’ll formally consult on the draft in the middle of next year.



- **Representation Review** – at least once every six years as a Council we must review our representation arrangements and we want your thoughts as we begin this journey over the next 18 months.
- **Have your say on speed limits in our region** – we’re looking at a variety of options for speed limits in Tasman and Nelson to help keep everyone safe.

To make it easier for you we have all these consultations in one place online. Head to shape.tasman.govt.nz to have your say on any or all of these topics.

We’re putting the FDS in place

The Joint Committee of Nelson City and Tasman District Councils recently adopted its Future Development Strategy Implementation Plan 2023.

The Implementation Plan follows on from the adoption of the Nelson Tasman Future Development Strategy 2022 – 2052 (FDS) in 2022.

Guided by 11 objectives that set out how both councils want to provide for growth while recognising the need for balance between competing objectives, the FDS is a 30-year high-level strategic plan that indicates potential sites in our region for future housing and business growth.

It is the overarching document that informs a number of current projects, including the Māpua Masterplan and the Richmond Spatial Plan.

The implementation plan is required by the Ministry for the Environment and is reviewed and updated annually, outlining the key actions required to meet the FDS objectives, by whom, and the timeframes for the actions identified in the plan.

It also contains information on the indicative staging of the FDS sites, although these will be confirmed following the adoption of our 10-Year Plan 2024 – 2034.

The Implementation Plan replaces our Intensification Action Plan from 2020, which was prepared following the adoption of our first FDS in 2019.

More information can be found at tasman.govt.nz/fds.

Book a minute for some Council history

It might not be as appreciated in this age of Zoom, but capturing the key points of Council business once required many pages and pen strokes to provide accurate records.

Through the hard work of our staff and the amazing assistance of NZ Micrographic Services, we have recently completed a project to make over 200 minute books from old Council meetings available online.

The minute books, featuring former county and borough council minute books between 1863 and the 1989 amalgamation to form Tasman District Council, have been published on the Tasman Heritage section of the Tasman Libraries website.

The digitisation project offers the public free online access to historical information. The books are in PDF format so at

this stage, all records still have to be manually scrolled to find the specific piece of information you are after.

The information contained in the books, neatly handwritten or compiled with the help of a typewriter, offers a window into the past and how meetings proceeded. Providing an accurate record of the past means readers may find statements within the many pages that reflect the period in which they were created but may not be appropriate in 2023. However, it’s reassuring to see how far we’ve come.

The minute book project was recently a finalist for the IRM Project of the Year award at the recent ALGIM conference.

You can find the minute books at heritage.tasmanlibraries.govt.nz.



WONDERFUL WATER

New toilet at Challies Island

Our mission to improve public facilities continues with the installation of a new public toilet next to the Waimea River fishing ponds on Challies Road.

This recreation area is growing in popularity, so a toilet facility was required to support hygiene and to limit the effects of human use on the environment as defined in the Waimea River Park Management Plan.

Development of the Waimea River Park, which runs on either side of the Waimea River between Appleby and Brightwater, began more than a decade ago.

The new single-pan toilet with a contained chamber was built in the main car park near the fishponds. The toilet lights are run on solar power.

This new facility is now up and running and ready for the busy summer season.



SUSTAINABLE STORIES



Site-specific pest projects make Abel Tasman a sight to behold

Site-led pest programmes are a bit different to our usual region-wide pest management, as they are based on protecting a specific location from a local pest.

Nelson Lakes and the Waimea Estuary are two examples of these site-led programmes. However, with the holiday season approaching and bach owners making use of their holiday spots, we thought it was a good time to highlight our site-led pest control programme in the Abel Tasman National Park.

The goal of this programme is to protect the ecological integrity of the park, by limiting the spread of several pest plants from private land situated within the park.

Pest plants are controlled on private enclaves in parts of Awaroa, Torrent Bay and north Mārahau/Apple Tree Bay.

The pests in question are rosemary grevillea, all cotoneaster species, European holly, sycamore, kūmarahou (also known as gum digger’s soap) and Douglas fir (wildings only).

We’ve been lucky to have the support of many private occupiers who have worked with us on the programme

to have pest plants removed. This complements the contributions of voluntary groups to the management of pests in the park.

We rely on the diligence of all occupiers within the area to report and control these pests. We are keen to work with landowners to continue to protect this special place.

If you think you have any of these pest plants on private land in the Abel Tasman National Park, please give us a call on 03 543 8400 or email biosecurity@tasman.govt.nz.

Rosemary grevillea



Kūmarahou

G.J. Gardner. HOMES

NEW SHOWHOMES OPEN 1PM – 4PM DAILY

48 & 50 Summersfield Boulevard, Richmond

OFFICE 195 Queen Street, Richmond
CONTACT 03 543 9502 | 0800 42 45 46
OFFICE OPEN Monday to Friday, 9am – 5pm
www.gjgardner.co.nz

Proud to be sponsoring:





Let us manage your compliance
Sumps, interceptors and grease traps... we've got you covered!
Leading liquid waste contractor in Nelson, Marlborough and Tasman

FREEPHONE 0800 725 326
EMAIL bookings@nmwaste.co.nz

nmwaste.co.nz





Transport projects progressing well, and new ones begin

Great progress is being made on our current Transport Choices projects despite some funding for the programme being delayed.

We want to bring our urban street layouts into the 21st century, meaning they are safe and accessible for people who can't or don't drive.

That was possible with a share of the \$305 million Transport Choices programme which comes out of the Climate Emergency Response Fund, directly administered by the crown and managed by Waka Kotahi. Allocation of some of that funding has now been delayed.

However, by making a fast start under incredibly challenging timeframes, we are already delivering some much-needed improvements around schools and recreational sites in Richmond and Motueka.

In Richmond, the William Street neighbourhood upgrade, including pedestrian safety improvements at the Hill Street intersection and outside Henley School, is nearing completion and will be finished just after Christmas.

In Motueka, the Pah Street improvements are progressing well and the raised crossing on Old Wharf Road is now finished.

Thankfully, Government funding is committed and secure for these works.

Our Streets for People programme, which is also delivering improvements for people walking and cycling in Richmond and Māpua is continuing, unaffected by the Transport Choices delay.

New cycle lane markings are being laid on Queen Street between Salisbury and Hill Street while new cycle lanes on either side of Champion Road are expected to be installed before Christmas and this will have an affect on street parking.

Plans have also been drawn up for a new "parklet" recreational space at the intersection of George and Queen Street.



eBus numbers zoom ahead

Patronage on the eBus network has continued to grow, with October patronage increasing 6,721 from September.

- The Motueka route increased by 45%
- The Wakefield route increased by 56%
- All routes 1 – 6 have increased month on month

The last three months of the former NBus service had patronage of 127,392, while the first three months of eBus had patronage of 218,271, an increase of 71%.

It's good to see bus patronage continuing to rise month by month since the launch on 1 August. This reflects the fact that people are liking the new eBuses and increasingly using the service.



Santa's sleigh causes eBus changes

Santa Claus is coming to town, so we need to make some changes to bus routes for the day.

Queen Street will be closed on Sunday 3 December, which means some Richmond bus stops will also be closed or moved for the entire day.

Buses will travel down Talbot Street instead of Queen Street, where a temporary bus stop will be set up on Talbot Street opposite Pak'nSave.

Route 1, to and from Berryfields, will travel from Lower Queen Street to temporary stops on Talbot Street, then on to Salisbury Road to Main Road Stoke. It won't travel on Queen Street, Hill Street or Champion Road.

Route 2 will start and finish at the temporary Talbot Street stops, and travel via Salisbury Road to Main Road Stoke. It won't travel along Queen Street, Wensley Road or Bateup Road.



Full details and maps can be seen at tasman.govt.nz/ebus-changes-due-to.



Angry birds create headaches

Feisty falcons have forced us to issue a warning to users of a track in the Richmond foothills.

We've had several recent reports of New Zealand falcons, kārearea, attacking walkers and mountain bikers in the Lodestone area of the hills.

The track most in the firing line is the mountain bike track, Terminus, below the Fowler Road skid into Lodestone Gully. The falcon pair is nesting in the upper Lodestone Gully. We're asking people to steer clear of the area if you can.

These relatively rare birds can fly at speeds of more than 100kmh and can catch prey larger than themselves.

Kārearea nest on the ground in shallow scrapes in the earth generally part way up a slope, and during the breeding

season, defend their nests when approached by people.

The distance at which they begin defensive behaviour differs between individual birds but a loud defensive 'kek kek kek' call usually begins within a few hundred metres of a nest.

As the threat gets closer to the nest, falcons become increasingly aggressive and initiate dive-bombing swoops. Within 50 metres of a nest, dive-bombing escalates to falcons striking the intruder, and in a recent incident on the hill, a person had some hair pulled out.

The nesting season is from now until about the end of January, and as a precaution, we've put up signs warning riders and walkers they could become a target of dive-bombing kārearea.

Pictured above: Diving kārearea, © Marlborough Falcon Trust

Accessibility forum to meet

Accessibility for All is a forum that examines the accessibility for everyone in the Tasman and Nelson region, aiming to ensure that both public and private facilities and activities are inclusive.

It's a joint venture project between Tasman District and Nelson City Councils, with the support of many community organisations. Its mission is to break down barriers.

The Accessibility for All forum holds meetings four times a year and the next

one is on Monday 4 December at 10.00 am in our Council Chambers in Richmond.

This is where practical solutions to accessibility barriers in consultation with Council projects are developed and discussed. Your voice matters and your insights are valued. You're invited to join in shaping the accessibility landscape across the region. Share your experiences, challenges and suggestions, and help create a truly inclusive environment.

Building Assurance team deemed AOK on BCA

Our Building Assurance team has received some welcome results from its recent accreditation audit of Building Consent Authority (BCA) Functions.

In October, the BCA had their two-yearly visit from International Accreditation NZ, who conduct an audit on behalf of the Ministry of Business, Innovation and Employment.

The BCA Accreditation Assessment is a review of our performance against the Building Regulations 2006 and the Building Act 2004.

The assessment ensures that we have adequate policies and procedures in place and that we adhere to these procedures when carrying out our duties.

The team received only five General Non-Compliances in the assessment and has subsequently maintained a low-risk level. To put this in perspective, to receive less than 10 General Non-Compliances is a good result.

Comments from the auditors included statements that the BCA had good systems in place that were generally well implemented. The assessors also commented on the team culture, and the willingness to learn and improve.

This means we will not be assessed again for another two years after the current items identified are cleared.

This result is a reflection of the hard work of all involved in preparing and during the audit process.

Surveying and Resource Management

- Subdivision Design and Management
- Resource Consents and Planning
- Land Development Engineering
- Project Management

81 Selwyn Place, Nelson
Phone 03 548 4422
staigsmith.co.nz

STAIG & SMITH
ENHANCING THE LAND



Councillor Celia Butler, Golden Bay Ward

Local communities are thinking and speaking about how climate change could affect them.

For many, one of the first thoughts is sea level rise, and storms coinciding with high tide is something we have already experienced around the coast. This affects lots of people in our region, especially with our many coastal settlements.

How do we actually adapt? Careful consideration of options will be the way forward. The first step, now underway, is to build a picture of the risks as they

are now, so we can know what the risks of the future will be. It is a complicated process, so thanks to those who have been able to contribute.

I for one, have no regrets about the investment in the electric buses, because teenagers and children can now get around the District safely, without having to be driven in a private vehicle. This not only saves on car journeys and reduces carbon emissions, but also opens up a world of independence and opportunity for our young people. These services will expand as the Council is able to add to the timetable over time.

NEWSLINE NOTICES



Grants to help youth become leaders

Did you know we offer grants of up to \$500 for Tasman youth to participate in youth leadership opportunities? This can be used for activities such as the Spirit of New Zealand, Outward Bound, Festival for the Future, Whenua Iti Outdoors and other experiences, conferences and workshops.

The grant is provided to support the personal development of young people living in Tasman. Applications are accepted all year round.

Don't miss the chance to enjoy a potentially life-changing opportunity. Get all the details and fill out an application now at tasman.govt.nz/grants.

Maritime events

Event activity: Giant Slalom / Big Brothers Big Sisters charity event.

Date and location: Saturday 2 and Sunday 3 December 2023, Waimea River
Under the provisions of the Navigation Safety Bylaw 2015, the Harbourmaster has granted authorisations for these events. Due to navigation safety requirements, water users not involved in these events may be excluded from defined areas during these activities. Further details and any new events can be viewed at tasman.govt.nz/maritime-events.

Flush your taps, check your roof

Some plumbing fittings have the potential to allow minute traces of metals to accumulate in water standing in the fittings for several hours.

Although the health risk is small, the Ministry of Health / Manatū Hauora recommends that you flush a mugful of water from your drinking water tap each morning before use, to remove any metals that may have dissolved from the plumbing fittings.

We recommend this simple precaution for all households, including those on public and private water supplies.

Everybody should try to save water whenever they can so you could collect the small amount you flush from the taps and use it for something else like watering plants (but not the veggie garden).

If you have a rainwater supply, flushing taps won't help. You need to check your roof and guttering for materials that may contain metals that could contaminate the water: lead flashing, lead-headed nails and lead paint, for example. These should be replaced if you find them.

Council hui

Meetings will take place in person and via Zoom. For details, the Zoom link and recordings of previous meetings visit tasman.govt.nz/meetings-calendar. Unless otherwise stated, all meetings will be held at Council Chambers, 189 Queen Street, Richmond.

Nelson-Tasman Regional Landfill Business Unit

Friday 1 December, 9.30 am.
Nelson City Council, 110 Trafalgar Street.

Creative Communities Subcommittee
Wednesday 6 December, 10.00 am.
Motueka Library Community Meeting Room, 32 Wallace Street. No public forum.

Operations Committee
Thursday 7 December, 9.30 am.

Regional Pest Management Joint Committee
Friday 8 December, 12.00 pm.
No public forum.

Audit and Risk Committee
Friday 8 December, 1.00 pm.
No public forum.

Joint Nelson Tasman Regional Transport Committee
Monday 11 December, 9.30 am.

Golden Bay Community Board
Monday 11 December, 1.00 pm.
Collingwood Fire Station, Elizabeth Street.

Tasman District Council
Wednesday 13 December, 1.00 pm.



Your guide to summer in Nelson Tasman

If you're wondering what there is to do across the region this summer, check out the latest Summer Events Guide!

Summer is the time our region shines brightest. Our stunning weather and landscape mean there are few better places to be, and this year's Summer Events Guide is your ticket to the best entertainment and activities the region has on offer.

Many of your favourite events from previous years are back – who doesn't love taking the little ones to the Teddy Bears' Picnic, grabbing something crafty at one of the many markets, checking out the outdoor movies, seeing Santa

on his sleigh at the local parades, or exploring the many different music, food, cultural and sports events.

There's something for everyone – the old, the young, the active, the creative, and everyone in between!

Everything you need to celebrate summer is here in this printed guide, brought to you by Tasman District Council and Nelson City Council.



Keep an eye out for a copy in your letterbox, pick one up from one of our service centres or download a copy from our website, tasman.govt.nz/summer-events-guide.

Wellby Talking Cafés

- **Wednesday 6 December, 1.30 pm – 3.00 pm, The Wholemeal Café, Tākaka.**
- **Tuesday 12 December, 10.00 am – 11.30 am, Tapawera Community Centre.**
- **Tuesday 12 December, 1.30 pm – 3.00 pm, Richmond Library.**
- **Wednesday 20 December, 10.00 am – 11.30 am, Motueka Library.**

Wellby Talking Cafés welcome everyone for a relaxed cuppa to start your journey connecting with others who enjoy the same things. You can pop in for a quick chat or stay for a longer conversation with friendly people. There is no need to register, just turn up on the day.

Motueka Starlight Christmas Parade

Friday 1 December, 7.00 pm, High Street, Motueka.

Come along and check out the entertainment from 5.00 pm, the parade starts at 7.00 pm. There will be Santa Claus, decorative floats, street entertainment, face painting, a fun photo booth, late-night shopping, a Ferris wheel and more.

Country Christmas Market

Saturday 2 December, 10.30 am – 3.00 pm, Moutere Hills Community Centre, Upper Moutere.

There will be more than 80 stalls, including artisan products, giftware, arts and crafts, food carts and entertainment, so there's something for everyone. On rain or shine. Free entry!

PAK'nSAVE Richmond Santa Parade

Sunday 3 December, 1.00 pm, Queen Street, Richmond.

There will be entertainment on the parade route from 12.30 pm, the parade starts at 1.00 pm, and afterwards head along

to Sundial Square where there will be more entertainment and you'll have the opportunity to meet the jolly man himself!

Treasure Hunt

Sunday 3 December, 10.00 am – 12.00 pm, Washbourn Gardens, Richmond.

Set off on an extraordinary treasure hunt amidst the enchanting surroundings of Washbourn Gardens. Search high and low as you and your fellow adventurers embark on an exciting journey to uncover hidden treasures and complete the hunt.

Tākaka Santa Parade

Saturday 9 December, 10.00 am, Commercial Street, Tākaka.

The Golden Bay Santa Parade is a family favourite for the whole community. There will be colourful floats, Tākaka Citizens Band, Santa Claus on his sleigh, and loads of entertainment and food vendors on the street.

May the Cane Prosper book launch

Thursday 14 December, 2.00 pm – 3.00 pm, Motueka Library.

Inherited family photographs are the catalyst for this story by Pene Greet and Avis-Ann Ballard: the journey of impoverished German migrants becoming tenant farmers of the Colonial Sugar Refining Company in Queensland, Australia. Books will be available to purchase for \$40 each.

Belli Clarinetti (Beautiful Clarinets)

Friday 15 December, 2.00 pm – 2.30 pm, Motueka Library.

Join us for half an hour of clarinet duets played by Dave North and Marie Willis of Belli Clarinetti and the Nelson Symphony Orchestra. Free to attend and all are welcome.

Is your water safe?
Get the best from your water, take the worst out of it!
Water purification / Filtration / UV sterilisers / Water softening

Water testing service available

thinkwater.
TASMAN BAY

03 528 8888