

NEWSLINE

PĀNUI

19 MARCH 2021
ISSUE 493



Architect impression of the new Motueka library

Motueka's new library taking shape

Contractors are making good progress on construction of the new Motueka Library on Decks Reserve. The large beams and trusses that will support the 1,200m² roof have been installed and the cladding will be on by the end of this month, marking a key milestone for the construction team.

The new building, which sits next to the i-SITE Information Centre on Wallace Street, will replace the existing outdated library on Pah Street. The design, which combines timber and other environmentally-friendly materials, was inspired by the functional, traditional forms of rural farm buildings in the area. The architects have followed universal design principles to ensure the building will be accessible for all residents, incorporating features such as step-free access, gentle ramps, wide corridors and colour to differentiate spaces.

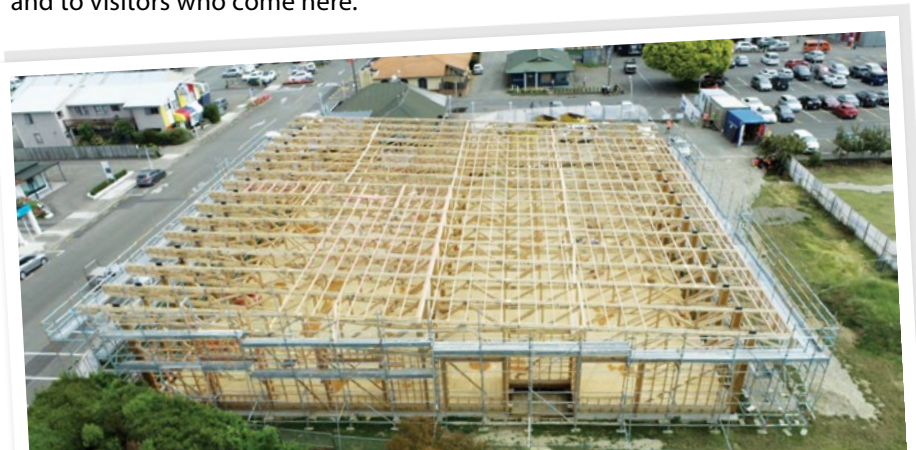
Construction began in September last year and project manager Adam Henderson is happy with how the build is tracking.

"It's pretty exciting to see the changes when I visit the site each week," he says. Adam came into the project team late last year and says he feels "quite lucky" to be a part of the process.

"Visually, it's going to make a striking addition to the Motueka landscape and the facilities it brings will be a real asset for the community – and to visitors who come here."

The next phase of construction will see the external walls and windows installed. Construction is due for completion at the end of 2021.

[Visit **tasman.govt.nz**, search **Motueka Library** to take a 3D tour of the concept design.](https://tasman.govt.nz)



MEET YOUR REPRESENTATIVES

Councillor Trevor Tuffnell – Richmond Ward



The Council faces a busy year. There is the 10 Year Plan, Covid-19 issues, central government directives and climate change.

The Government is in the process of reforming our resource management system 30 years on, and three new pieces of legislation will be introduced: the Natural and Built Environment Act, the Strategic Planning Act and the Climate Change Adaptation Act.

This will be a challenging time for the Council as we transition to the future system. Hopefully this will speed up and simplify processes, but the change will take some time

to implement. Another area where we can expect changes is as the Government undertakes its Three Waters Review: drinking water, wastewater and stormwater.

I recently attended a climate change seminar led by noted international climate scientist Dr Jim Salinger. The figures he provided left you in no doubt that significant change is taking place. He noted the need to review the trees and plants that we are

growing in Tasman, given that we face temperature changes affecting arable land, fruit and forestry. It's become apparent that irrigation is going to become paramount in the future as weather patterns change.

To finish, a bouquet. As our traffic flows intensify at this time of year, it's great to see the level of courtesy on the roads increase.

**Councillor Trevor Tuffnell
Richmond Ward**

Champion/Salisbury Roundabout upgrade – next steps

We're making good progress with the improvements to the roundabout at the intersection of Champion and Salisbury Roads in Richmond.

In the week starting from 22 March 2021, we'll be moving on to do the

re-sealing work. This will involve Champion Road East being closed entirely for one day only. This will be on Monday 22 March with Tuesday as the back-up wet weather day.

During this closure, access to and from Champion Road East will be via the Templemore/Kareti Drive detour and the mini roundabout on

Salisbury Road. Apart from this one-day closure, much of the re-sealing work will be carried out at night to minimise disruption. The current traffic layout will remain in place during the day while we carry out this part of the project.

Thanks for your continued patience as we carry out this important upgrade.

NEW SHOWHOMES

G.J. Gardner.

HOMES

54 & 56 Berryfield Drive. Richmond

www.gjgardner.co.nz

Proud to be sponsoring:

CONTACT 03 543 9502 | 0800 42 45 46

NELSON OFFICE 195 Queen Street, Richmond

OPEN Monday to Friday, 8.00am – 5.00pm

Doing good in Golden Bay

We're profiling the winners of 2020's Outstanding Community Service Awards, paying tribute to those who work so hard to make our District richer for everyone. This week, we're celebrating Golden Bay's Penny Griffith.

With her characteristic tenacity and determination, Penny Griffith has been the driving force behind many community activities and initiatives in Golden Bay. She's been active in the Golden Bay Orchestra, the Golden Bay Choir, the Collingwood Battle of Trafalgar committee, the Collingwood Museum committee, the Tākaka Museum board (including as chair), Bainham Rural Women and served as Collingwood's volunteer librarian.

One of her most significant contributions is launching a 20-year campaign to recognise Abel Janszoon Tasman's exploits in the region, culminating in the First Contact 375 commemoration which led to her being recognised with the Abel Tasman Medal of Honour in 2018.

Penny, now living in Wellington, says volunteering was a key part of the enjoyment of living in Golden Bay/Mohua.

"As a townie, of course I had no idea how important volunteering is to rural communities. Just about everything that happens depends on time (and travel costs) willingly given by the community."

She and her late husband, Peter Foster, had agreed that they would say "yes" to everything when they moved permanently to Collingwood in 2003.

"That meant we learnt so much about how this special place operates and we got involved in all sorts of things, both together and



separately. It was also a privilege to be able to contribute to activities where I'd had previous experience, such as heritage services."

She says volunteering is a two-way relationship. "You give some things like time or experience, but the reward is friendships and understanding that simply can't be bought."

Safer travel for Wakefield School

Wakefield School's new active travel plan is already benefitting pupils, parents, staff and the wider community as more children walk, bike or scoot to school – and the consequent reduction in school traffic has made it safer for them to do so.

Transport planner Clare Scott says when the travel plan started, 30% of children used active transport to get to school. That has now increased to 45% who are walking or biking the whole way and 67% who are using active travel at least some of the way. Some pupils' parents drop them at designated park 'n' walk locations which means they walk about 400m to school.

"Quite a lot of parents have taken up that option; it's a good baby step towards those kids getting to school completely on their own," Clare says. While it doesn't completely cut car

use, there are still developmental and confidence benefits: Teachers report that the children walking to school arrive more alert, more focused and proud of themselves.

"They say 'I walked from there and didn't need my mum to come with me,'" she says. "That's a good stepping stone; we need to take a long-term view if we want it to be sustainable and lasting. They've now grown up a bit in showing they can walk 400m by themselves so parents might say 'Okay, you can do the full 1km by yourself next year!'"



Peter Verstappen (Principal), Jenny Lines (parent lead) Aaryn Barlow (DHB) Clare Scott and Nic Brydon (Council staff) and students all helped with the plan

The travel plan was sparked by a group of parents concerned that a pedestrian refuge on State Highway 6 wasn't safe for children walking to school. Clare says discussions with Waka Kotahi NZ Transport Agency are ongoing.

The travel plan involves a research-backed array of infrastructural and behavioural changes to encourage active transport, including an incentive programme. Clare says other schools in Tasman are next on the list.

Government reforms and the Long Term Plan

Recently, central government introduced new rules and regulations around how we manage our environment and services. These changes, which are continuing to roll out, are designed to enhance and protect our environment and improve community wellbeing.

The changes include Resource Management Act (RMA) reforms, new freshwater regulations, National Policy Statements for Urban Development and Freshwater Management, and the Climate Change Response Act. They have come as a result of higher community expectations around how we manage our natural resources.

The RMA will be replaced with three new Acts: A Natural and Built Environments Act (NBA), a Strategic Planning Act (SPA), and a Climate Change Adaptation Act (CCAA).

We don't yet know how the new Acts will impact the Council and its functions; bills covering the NBA and SPA are expected to be introduced to Parliament by the end of 2021, with all three Acts passed by the end of 2022.

Three Waters Reform (stormwater, wastewater, and drinking water)

The aim of these changes is to recognise the challenges councils face in providing these services and to help support significant public health, environmental, economic and cultural benefits. Part of the changes in the Three Waters reform include establishing a new drinking water regulator (Taumata Arowai).

In August 2020, the Government signed a Memorandum of Understanding (MoU) with a number of local authorities, including our Council, to support the improvement in Three Waters service delivery across New Zealand. Under our MoU we have been granted \$9.78 million in funding, and this has been included in our proposed 10-Year Plan work programme to help pay for drinking water and wastewater projects.

As the majority owner of the drinking water, wastewater and stormwater services across Tasman, our challenges include maintaining and building new infrastructure, complying with safety standards and environmental expectations, building resilience to natural hazards and climate change, and supporting growth.

The Government's starting intention for the future of water service delivery is for community-owned multi-regional models. With final decisions yet to be determined, the outcome could have a substantial impact on the Council's roles, structure and finances and how we collect and pay for assets such as the Waimea Community Dam.

While the Government is yet to announce further details on the



reform programme, the Council anticipates that if it were to proceed, our interests in the Waimea Community Dam along with the associated debt would likely be transferred to a new water service entity.

We expect to know more in April/May 2021. Any transfer of responsibilities is likely to occur in 2023/2024.

Regardless of the eventual outcome, the Tasman community will continue to need drinking water, stormwater, and wastewater services. At this stage in our planning cycle for Tasman's 10-Year Plan, we have assumed that the Council will continue to provide these services. The related work programmes and budgets are included in our Activity Management Plans, Infrastructure Strategy and Financial Strategy.

The simple way to recycle your greywater for garden irrigation.

WaterMate

- Save money by reusing water
- Washable filters are easy to clean or replace
- Install above or below ground
- 370 x 590 mm



Allflow

www.allflow.co.nz
58 Gledstone Rd, Richmond
03 543 9057

printhouse
look great in print

DESIGN • PRINT • DELIVER

Got a question? Call us: 03 543 9480
tony@printhouse.co.nz

proudly local 16 Tokomaru Place, Wakatu Estate, Stoke

Streets for People – Croucher/D’Arcy Neighbourhood changes

We’re getting ready to roll out the trial changes to create a safer and more interesting space in this Richmond neighbourhood.

Here are the key changes you’ll see happening on the ground starting from 29 March:

- Vehicle access to Elizabeth Street will be closed to vehicles at the Talbot Street intersection. This trial closure will begin on 6 April, following Easter weekend.
- Drop-off parking spaces will be created at the Kindergarten (corner of Florence and Elizabeth Streets).
- Florence Street will be narrowed to one lane for a short section between

Herbert Street and Fauchelle Avenue to encourage slower speeds and road sharing.

- New seating and trees will be added to Burbush Park on Fauchelle Avenue.
- A pedestrian refuge will be installed on Talbot Street to make it safer to cross one lane at a time.
- Speed humps will be installed on D’Arcy, Croucher, Elizabeth and Herbert Streets.

The trial changes are a result of traffic monitoring in the area and discussions held with residents in late 2020.

They are expected to be in place until at least July and we will

be seeking feedback from the community to see if the changes achieve what they were designed to. If that’s the case, we could discuss making permanent changes.

This is one of two trial projects in our region funded by Waka Kotahi NZ Transport Agency (the other is in Tākaka). The aim of the fund is to support communities to shape their towns and streets in ways that allow them to become community spaces, not just a way to get around. It was prompted, in part, by how differently people used their streets during Covid Alert Level Four in 2020.

For more details visit tasman.govt.nz and search Streets for People.

Councils join forces for housing preferences survey

Tasman District Council and Nelson City Council have commissioned Research First to conduct a housing preference survey, online and by phone, with local residents.

The survey findings will help the councils understand people’s housing preferences for the future. It collects information on what is important in choosing a place to live and explores the type of housing people would prefer to buy or rent if it were available.

These surveys will be conducted in March and April 2021. Participants in the survey will be randomly

selected from residents living in our communities. If you are contacted about this by phone or email, we would appreciate it if you would take the time to complete the survey. Your feedback is very important to us and it will help us to plan for the future of both Nelson and Tasman.

We understand that some people may be concerned about scam calls.

Research First is an independent market and social research company based in Christchurch. They conduct research on behalf of many public and private organisations around the country, including numerous local councils.

You can find out more about Research First by visiting their website: researchfirst.co.nz.




FLETCHER VAUTIER MOORE
LAWYERS

Providing legal advice on property and business matters.

Zoe Bond
Associate

zbond@fvm.co.nz
265A Queen Street, Richmond
Phone (03) 543 8301



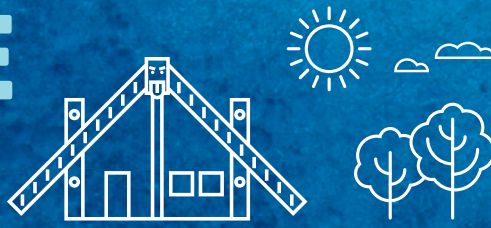
SURVEYING & RESOURCE MANAGEMENT

- Project Management
- Resource Consents & Planning
- Subdivision Design & Management
- Land Development Engineering


STAIG & SMITH^{TD}
ENHANCING THE LAND

81 Selwyn Place, Nelson • Ph 03 548 4422 • www.staigsmith.co.nz

NEWSLINE UPDATES



KEEPING YOU INFORMED ABOUT NEWS AND EVENTS IN THE TASMAN DISTRICT • 19 MARCH 2021

Changes to kerbside collections for Easter

In order for staff to take a break on Good Friday, the rubbish and recycling collections in **central Richmond** will be one day later – Saturday 3 April 2021. There will be no change to collections in other areas.

Please place your recycling bins and bags on the roadside in a location where our drivers can see them clearly. If you are going away and will miss collection day or have extra, you can drop your official rubbish bags and recycling at any Resource Recovery Centre free of charge. Make sure you do not overfill your recycling bin or glass crate, or it will not be collected. If you need a second crate for glass, you can buy one from a Council office or Resource Recovery Centre for \$20.

Resource Recovery Centre opening hours: Our Resource Recovery Centres will be closed on Good Friday (2 April), but otherwise open as normal.

Tell us what you think – proposed changes to Motueka skatepark

After talking to users, we're proposing to improve the skatepark at Old Wharf Road, Motueka. The proposal is to do the upgrade in stages and the key changes are:

- Adding new features including a volcano, roller bump and 8-foot quarter with 3 metre channel gap.
- Creating a 'plaza' area that allows new riders, skaters and juniors to gain skills and confidence away from more experienced users.
- A 6–8-foot bowl to provide additional challenges for skaters, scooters and riders.

You can share your feedback on the proposal until 22 March. Go to the website, tasman.govt.nz/feedback.



Share your thoughts on the Trail

If you've ridden Tasman's Great Taste Trail lately, the Cycle Trails Trust would love to hear what you thought of it. Complete their short survey and go in the draw to win a massive prize valued at \$700, including meals, accommodation, bike hire and a cruise in the Abel Tasman! Survey closes 31 March. You can find the survey at heartofbiking.org.nz/feedback.

Time to trim those trees

As we head into the shorter days of autumn, now is a good time for property owners to check that any vegetation on their land doesn't obscure clear sightlines. This keeps visibility high and makes roads and footpaths safer for pedestrians and traffic.

Property owners are responsible for clearing vegetation from their road frontage. Along footpaths, all vegetation should be trimmed so it's in line with a wall, fence, or the back of the path, and should also be cleared 2.5 metres over the footpath. Along roads, vegetation should be cut back to 0.5 metres from the edge of the roadway and 4.5 metres above the roadway.



Holiday hours and services

All service centres and libraries will be closed for the public holidays on:

- Good Friday – Friday 2 April
- Easter Monday – Monday 5 April

Usual opening hours apply otherwise. We are always here to help when needed though, call 03 543 8400 for assistance in an emergency, 24 hours a day, seven days a week.



Sport NZ Rural Travel Fund – apply now

The Sport NZ Rural Travel Fund applications are now invited until 30 April. The Sport NZ Rural Travel Fund offers help with travel costs for rural sports clubs and rural school teams. The fund is to help young people aged from five to 19 participate in local sports competitions. Sport NZ fully funds the Rural Travel Fund, which the Council administers locally on their behalf. The next funding round closes on 30 April 2021. Head to tasman.govt.nz/grants to check out the funding guidelines and complete and application form.

NEWSLINE UPDATES



KEEPING YOU INFORMED ABOUT NEWS AND EVENTS IN THE TASMAN DISTRICT • 19 MARCH 2021

APPROVED TEMPORARY ROAD CLOSURES



This timetable shows locations for various demonstrations in the region. The proposed temporary closure will only be in place at each location for the duration of the demonstrations. Residents and other traffic will have access between demonstrations, which only last around 10–15 minutes each.

- Treeton Place, Wakefield (from Edward Street to number 13 Treeton Place). Monday 22 March 2021, 9.10 am – 12.30 pm.
- Ranzau Road, Hope (from number 70 to number 164 Ranzau Road – outside Ranzau School). Monday 22 March 2021, 1.00 pm – 2.45 pm.
- Fairfax Street, Murchison (from number 30 Fairfax Street to the end of the road by the Police Station). Tuesday 23 March 2021, 9.15 am – 11.00 am.
- Main Road Tapawera, Tapawera (from number 37 to number 59 Main Road Tapawera – outside Tapawera Area School). Tuesday 23 March 2021, 1.00 pm – 2.30 pm.
- Wadsworth Street, Tākaka (from number 5 to Boundary Road intersection). Wednesday 24 March 2021, 9.10 am – 2.30 pm.
- Church Street, Richmond (from Gladstone Road (SH6) to Dorset Street). Thursday 25 March 2021, 9.10 am – 12.00 pm.
- Fauchelle Street, Richmond (between Florence Street and D'Arcy Street). Thursday 25 March 2021, 12.30 pm – 2.45 pm.
- Iwa Street, Māpua (from Moreland Place to Toru Street). Friday 26 March 2021, 9.10 am – 12.00 pm.
- School Road, Riwaka (from number 12 to number 26 School Road – outside Riwaka School). Friday 26 March 2021, 1.00 pm – 2.40 pm.

COUNCIL HUI



Unless otherwise stated, all meetings will be held at Council Chambers, 189 Queen Street, Richmond. Access to meetings will continue to be available via Zoom video conferencing for those who are unable to attend in person. See tasman.govt.nz/meetings-calendar for details.

District Licensing Committee
Tuesday 23 March, 9.30 am.
Public forum.

Nelson Regional Sewerage Business Unit
Tuesday 23 March, 9.30 am.
Nelson City Council 110 Trafalgar Street, Nelson. Public forum.

Tasman Regional Transport Committee
Tuesday 30 March, 10.30 am.
Public forum.

Operations Committee
Thursday 1 April, 9.30 am.
Public forum.

Regulatory Committee
Thursday 1 April, 1.30 pm.
Public forum.

KEEP UP TO DATE:
[TASMAN.GOV.T.NZ](https://tasman.govt.nz)

IS YOUR WATER SAFE?

Get the **BEST** from your water!
Take the **WORST** out of it!

- Water Purification
- Filtration
- UV Sterilisers
- Giardia Filters
- Water Softening

**WATER TESTING SERVICE
AVAILABLE**



thinkwater.
TASMAN BAY
BEYOND IRRIGATION

401 HIGH STREET MOTUEKA
PHONE: 03 528 8888



The specialists in design, supply and installation of domestic & horticultural irrigation, drainage, effluent & septic systems, pumps, water harvesting & tanks and water treatment & filtration.

WHAT'S ON IN TASMAN



Living Wood Fair 2021

**Saturday 17 & Sunday 18 April,
9.00 am – 6.00 pm. Tōtara Whenua,
East Tākaka, Golden Bay.**

The Living Wood Fair is a fantastic day out for the whole community, young and old: A world of wood and incredible talents on display in a stunning location in East Tākaka. For more information visit livingwoodfair.co.nz

Children's Day postponed

Originally scheduled for 7 March, our Children's Day celebration has been moved to Sunday 28 March at the Richmond Aquatic Centre. Enjoy an afternoon of free, interactive games and activities to celebrate national Children's Day from 11.00 am – 2.00 pm. In addition, for this special day you can enjoy the Richmond Aquatic Centre pools for just a gold coin.



2020 lockdown quilt unveiling

Last year we invited stitchers of all ages from across Te Tau Ihu, The Top of the South, to stitch a word or image relating to their experience of Level 4 Lockdown on to a piece of fabric. These have now been pieced together into an extraordinary community quilt by textile artist Christine McGuigan. We invite you to join us at Richmond Library, 5.30 pm on Friday 26 March for the unveiling and celebration of the completed quilt. This event will only take place if we're at Level 1.

Discovering the dragon's teeth

Come along to Tākaka Library on Tuesday 23 March at 2.00 pm to hear Warwick Briggs' presentation on the "horror country" between Boulder Lake, Adelaide Tarn and Lonely Lake. Don't miss this fascinating local history talk put on with the support of Golden Bay Museum. Free.

Heartstone book launch

Come to the launch of Robyn Prokop's new book, *Heartstone*, at Richmond Library, 5.30 pm on Thursday 25 March. Robyn will be in conversation with narrator Jonathan Moffatt about the joys and struggles of creating an audio book for her first book *Taelstone*, as well as celebrating the launch of *Heartstone*. Free.

Great grants for youth

Did you know we offer grants of up to \$500 to students in Tasman to participate in youth leadership opportunities?

This can be used for activities such as The Spirit of New Zealand, Outward Bound, Festival for the Future and other experiences, conferences and workshops.

The grant is provided to support the personal development of young people living in Tasman. Applications for grants of up to \$500 are accepted all year around.

To be eligible, you must:

- Live in Tasman District.
- Be aged between 15 – 20 years.
- Be applying to a programme/project/training which has a central focus on youth leadership.
- Provide a report back to us.

Don't miss the chance to enjoy a potentially life-changing opportunity. Get all the details and make your application now at tasman.govt.nz and search on Youth Leadership Grants.

NELSON MARLBOROUGH WASTE

Sumps, Interceptors ...

bookings@nmwaste.co.nz
Regular cleaning & removal of sediment & contaminants is important!
Let us manage your compliance. Join our **Regular Service Scheme**.
[Terms & Conditions Apply.](#)

**Give us a Freecall
0800 725 326**

**Visit our Website
nmwaste.co.nz**