

NEWSLINE

8 MARCH 2019
ISSUE 443



BEAT THE MAYOR!

HOLD UP. PUT DOWN THE BRICKS AND BATS.

What we mean is: Beat the mayor's water-saving efforts!

Tasman Mayor Richard Kempthorne reckons he's pretty awesome at water conservation. He and wife Jane have reduced their household water use to 97 litres per day. That's less than a fifth of the water used by the average two-person household in Tasman District.

But we think you can beat him! To give you a head-start, we've tricked Richard into revealing all his water-saving tricks.

January 2019 household daily water use:
350 litres per day

Current household daily water use:
97 litres per day

HERE'S HOW HE DID IT:

- Read water meter regularly
- Only water garden with recycled shower water
- Shower every second day
- Short showers – turn water on briefly to wet down. Soap, shampoo. Turn water on briefly to rinse off.
- Boil jug for hot water rather than run tap
- Wash dishes in a container then reuse water on garden
- Replace leaky outdoor taps

- Full washing machine loads only
- Full dishwasher loads only

Doesn't sound too hard, right?

THE GRAND PRIZE

Anyone who can top his water saving will earn the chance to dunk Richard in the Richmond Aquatic Centre pool.

Head to www.tasman.govt.nz/feedback for more information and to enter.

Mayor's message

I would like to thank everyone in our community for the tremendous response that has been given and felt following the fire that started in Pigeon Valley.

This fire started during extraordinarily dry conditions which have seldom been experienced in the past. It has highlighted the need for all of us to be extra vigilant about the risk of a fire starting. However it started, the consequences were extraordinary.

February 2019 will always be remembered as the month of the fire for Tasman District. It was a challenging and often scary time for many. I would like to extend my sympathy to those who lost their home. I am very grateful that no lives were lost. A significant effort by Fire and Emergency New Zealand is ongoing to extinguish the fire, which has now moved underground. The recovery from the fire will continue for many months yet and will continue to be felt through many parts of our community for much longer. I am so grateful to all of the agencies involved, including the hundreds of volunteers, firefighters, Council staff, iwi, police, army, Red Cross, and many others who have come together to provide support. This support has been outstanding. I would like to thank all those affected for their patience. There have been outstanding donations to the Mayoral Disaster Relief Fund from government, iwi, individuals and organisations both within our

District and throughout New Zealand. Thank you to all those who have contributed. I would like to remind anyone affected that the fund is open for applications. The link is available on the Council and Civil Defence websites or call in to any of the the Council service centres or libraries.

And of course, at the same time we have been experiencing increasingly severe drought conditions in the District. This is already more severe than the 2001 drought and at the time of writing there is little or no rain on the horizon. This will have a very significant impact on many people. This includes horticulturists and their employees, residential and businesses in many parts of the District. May I suggest that everyone look out for themselves and their neighbours and give support wherever possible. This could be a bit of a long haul for us this year.



Richard Kempthorne
Mayor



In case you missed it

A summary of recent Council meetings and the decisions made.

Full Council - 21 February 2019

- Received information about stormwater planning for Richmond. Community consultation on the plans will take place from late March 2019.
- Approved funding for the new Motueka Library. More information on page 4.
- Received an update on the Waimea Community Dam project. Initial site preparation works are due to begin in March 2019.

Community Development Committee - 21 February 2019

- Agreed to establish a Motueka Library Working Party to progress the design and procurement phases of the Motueka Library project.

- Consultation on the proposed Age-Friendly Policy closed on 25 January 2019. We received 46 submissions. The purpose of the policy is to guide our planning to address the needs of the growing number of older residents and to help develop an age-friendly community. The Age-Friendly Policy Steering Group met in February to discuss the feedback. An amended policy is due for adoption in April.

Extraordinary Full Council - 28 February 2019

- Considered the next steps for water restrictions if the ongoing drought continues. If the water supply situation worsens, urban businesses may face up to 50% cuts and households may be restricted to 125 litres of water per person per day. A community meeting was planned for Wednesday 6 March to talk through the situation and potential future restrictions. See our website for updates.





Above: Wai-iti River at Livinstone Road in late February.

Critical water shortage continues – please increase water saving efforts



As Newsline went to print late last week, there was little relief from the ongoing drought for our region.

The fire risk was still extreme and our water supplies continued to decline without rain to top them up. On Wednesday we held a community meeting to discuss the urban water supply and the likely next restriction steps if the drought continues. More detail about those potential future restrictions can be found on our website.

Strict water restrictions remain in force for communities in the Waimea, Upper Motueka and Golden Bay areas.

On Monday, water permit holders in the Motupiko water management zone in Upper Motueka joined those in Dovedale, the Moutere Surface Water, Powley Creek and Rainy River zones on a cease take, allowing water to be used for essential human needs and stock drinking water only.

Most permit holders on the Waimea Plains are subject to a 65% cut in allocation. Permit holders in other zones throughout the District face restrictions ranging from 20 – 50% of their usual allocations.

If you have animals you need to consider your stock levels and make plans to either reduce stock numbers or source water from areas where there are no restrictions. Support and advice for rural communities is available through the Ministry for Primary Industries and the Rural Support Trust. Head to www.mpi.govt.nz for more information.

Urban communities in Richmond, Hope, Brightwater, Wakefield, Mapua, Ruby Bay and their rural extensions face a ban on outdoor water use (except bucket watering of fruit/veges on alternate days), and businesses in these areas are required to cut their water use by 25%.

This is an extremely challenging time for Tasman District and we understand the demands may seem overwhelming. Please know your efforts to save water are making a difference – we've seen an impressive drop in demand from across the community over the past two weeks. Thank you.

Every drop of water you save now delays the day we reach an emergency situation. There's heaps you can do to reduce your water use – have shorter showers, put a brick or full water bottle in the toilet cistern, and collect every drop of water you use around the house to repurpose for cleaning, flushing the toilet or on the garden.

One of the most important things you can do is get into the habit of checking your meter so you know how much water you actually use. Check out our website for a tutorial if you're not sure how to read your meter.

Mayor Richard Kempthorne has taken up the challenge and managed to reduce his household water use down to 97 litres a day – that's a fifth of the amount the average two-person household uses each day. He's challenging you to outdo him – check out the front page for tips and tricks to help you beat the mayor.

Funding confirmed for new Motueka Library

Funding for the Motueka Library redevelopment has been confirmed and work will continue to investigate site options on Decks Reserve.

Initial estimates for the library project were developed several years ago, and a combination of construction, consent and other cost increases mean about an extra \$1 million is needed compared with the initial budget. A 2018 feasibility study estimated the new library would cost about \$5 million.

Council project manager Chris Blythe says good progress has already been made on the project, with some key investigation work well underway. A specialist library consultant is running workshops with the

community and iwi to develop a design brief.

The next step is to consider where on Decks Reserve the new library could be built, Chris says.

“We are carrying out site investigations to evaluate the options from a technical point of view – whether any sites are simply easier or more practical to build on. Once we have that information, we will be able to have a conversation with the Motueka community about the pros and cons of the options and find out which option they

prefer. We expect to begin the feedback period in late March 2019.”

Chris says the new library will require approximately 40 car parking spaces to meet the Building Code.

“We can meet that with the existing parking spaces at Decks Reserve,” Chris said. “Plus, it is possible to create more spaces by adding angle parking on Wallace Street to maintain the current levels of parking in that area.”

We expect to begin building the new library in 2020.

Rural fire tips

One of the lessons we will take from the Pigeon Valley Fire is the need to think about protecting houses in a rural environment.

Much of that was due to the work by firefighters and locals but it also pays credit to the fire awareness of rural property owners.

While there are many benefits to living in the country there is a higher fire risk. If a fire does start, emergency services could take longer to reach you due to the greater travel distances and there is often a greater amount of fuel for a fire in a rural area. There are some simple things that can minimise this risk to rural houses and other buildings.

Embers can travel up to two kilometres ahead of a wildfire. You can reduce the risk of embers starting a fire by establishing and maintaining two safety zones around your home.

Zone 1 extends to 10 metres on all sides of your house:

- use irrigated lawn and low-growing fire-resistant plants
- avoid tall trees close to the house
- remove flammable debris like twigs and leaf litter

Note: Reducing fuels and using 'fire-safe' landscaping practices is particularly important in zone one.

Zone 2 extends from 10 to 30 metres of your home:

- remove scrub and dead or dying plants and trees
- thin excess trees and evenly space remaining trees so they aren't touching.

Clean your gutters and make sure there is nothing flammable beneath the house.

Access:

Make sure your driveway clearance is at least four metres wide and four meters high. Ensure there is adequate turning space for fire trucks and easy access to water.

Water source

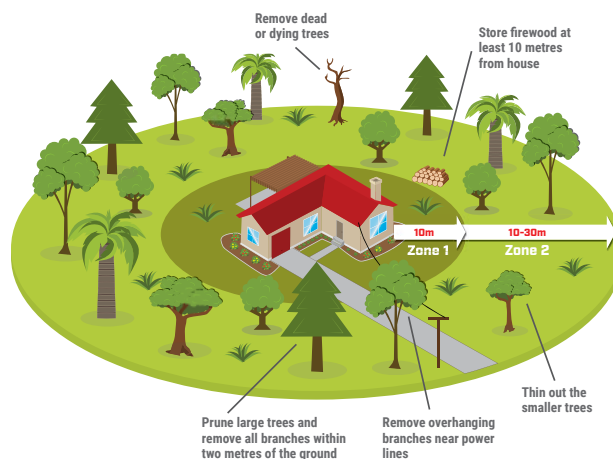
Ensure there is access to an adequate supply of water for fire trucks. Your garden hose should be connected and long enough to reach around the house.

Signs

Make it easy for emergency services to find you by making sure your RAPID rural property identification number is on your signpost and clearly visible from the road.

Minimise the fire risk

- Remove dead or dying trees
- Store firewood at least 10 metres from house
- Thin out the smaller trees
- Remove overhanging branches near power lines
- Prune large trees and remove all branches within two metres of the ground



PROPOSED ANNUAL PLAN

2019/2020

The drought and Civil Defence response to the Pigeon Valley fire have been front and centre of the Council's work over the past month. Many Council staff put aside their usual work to take on leadership, welfare, logistics, planning, operations and public information roles within the Civil Defence Emergency Operations Centre.

Before the fire started on 5 February, we had been in the process of finalising the proposed work programme for the coming year. The key aspects of the Annual Plan for 2019/2020 are outlined below. Planning and preparing for natural hazards and civil defence emergencies will be an important focus for us both this year and in future years.

BALANCING PROGRESS AND AFFORDABILITY

We have been busy planning for the 2019/2020 year to maintain and improve our infrastructure, respond to continued population growth and manage our natural resources.

Major projects we will be progressing include the construction of the Waimea Community Dam, developing the Takaka to Pohara cycle link, upgrading the Brightwater town centre, undertaking flood mitigation planning in Motueka and Riwaka, designing the new Motueka Library, and carrying out flood mitigation works at Neds Creek in Murchison. We will also continue to protect Tasman's precious environment. We intend to complete a biodiversity and biosecurity strategy, to carry out a survey of fish in the Waimea Estuary and assess the effectiveness of the Tasman Resource Management Plan.

The planned increase in rates revenue will be 2.74% (after allowing for growth) with anticipated debt of \$191.4 million by the end of June 2020.

Tasman Mayor, Richard Kempthorne said 'The ongoing impact of the fires and the drought will need to be considered during 2019/2020. In the meantime, we are keeping to our intentions for the year as set out in the Long Term Plan as much as possible. We will continue to keep rates at affordable levels and focus on managing our debt at acceptable levels. At the same time we plan to maintain and improve infrastructure and be responsible guardians of our environment'.

2.74%
PLUS GROWTH



RATES REVENUE INCREASE

2019/2020 ★
WILL BE THE ★ **5th** ★
CONSECUTIVE YEAR
IN WHICH OUR RATES INCREASE
IS BELOW OUR 3% CAP

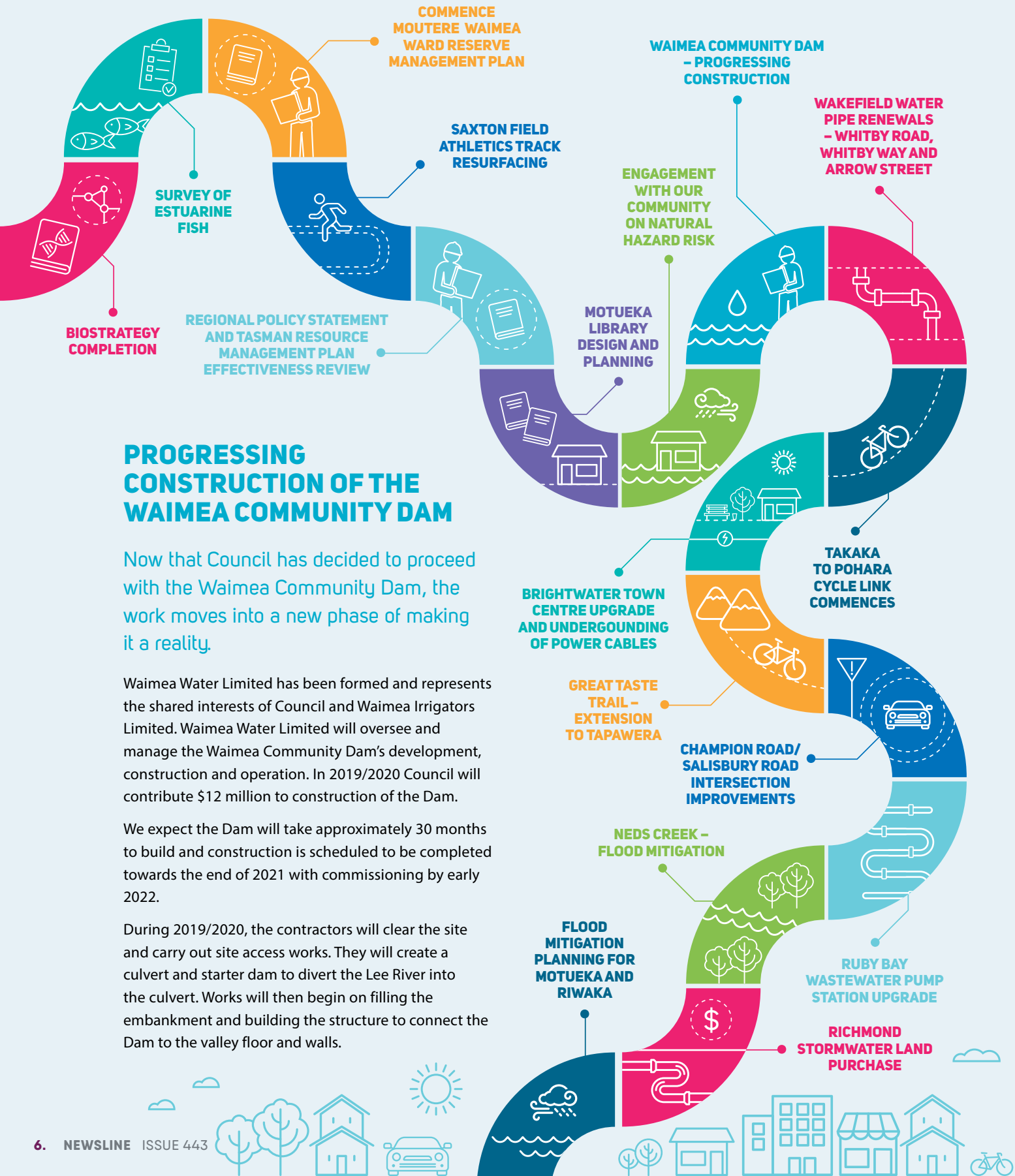
\$191.4M 
PROPOSED NET DEBT
AT THE END OF 2019/2020

BELOW
FINANCIAL
STRATEGY
CAP OF
\$200M



FOR OUR COMMUNITY

HERE'S JUST A FEW OF THE PROJECTS WE'RE PLANNING FOR 2019/2020



PROGRESSING CONSTRUCTION OF THE WAIMEA COMMUNITY DAM

Now that Council has decided to proceed with the Waimea Community Dam, the work moves into a new phase of making it a reality.

Waimea Water Limited has been formed and represents the shared interests of Council and Waimea Irrigators Limited. Waimea Water Limited will oversee and manage the Waimea Community Dam's development, construction and operation. In 2019/2020 Council will contribute \$12 million to construction of the Dam.

We expect the Dam will take approximately 30 months to build and construction is scheduled to be completed towards the end of 2021 with commissioning by early 2022.

During 2019/2020, the contractors will clear the site and carry out site access works. They will create a culvert and starter dam to divert the Lee River into the culvert. Works will then begin on filling the embankment and building the structure to connect the Dam to the valley floor and walls.

Overall, we are planning our capital expenditure for 2019/2020 to be \$3.9 million lower than we forecast in the Long Term Plan 2018–2028.

The main driver of this variance is the delay of the Wakefield water treatment plant. Further testing of the raw water from its source is needed to ensure that we design the best treatment system. Construction has been rescheduled to 2020/2021.

For a range of technical and operational reasons we have also altered the timing of the following projects:

- Nelson Regional Sewerage Business Unit (NRSBU). Improvement works have been delayed to 2020/2021 pending resource consent decisions.
- Mapua water trunk main design (Moturoa/Rabbit Island). Design brought forward to commence in 2018/2019 and conclude in 2019/2020, prior to construction in 2020/2021.
- Water pipe renewals in Martin Avenue, Whitby Road and Whitby Way, Wakefield. We have advanced these projects to 2019/2020 so we can carry them out with other pipe renewal work in Arrow Street.

WHERE THE MONEY COMES FROM

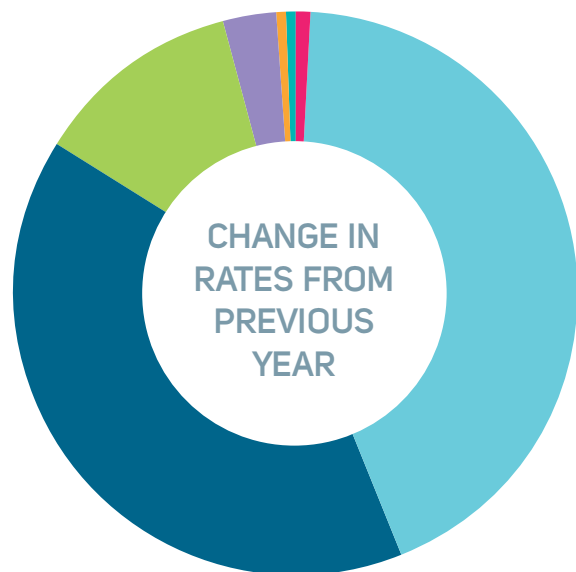
The majority of our income (58%) each year comes from rates. In 2019/2020, we anticipate the other 42% will come from other income streams such as fees and charges, government grants and subsidies.

The rates increase does not apply evenly across all ratepayers due to the mix of general and targeted rates that apply to each property. For some ratepayers the rates increase in 2019/2020 will be lower than 2.74% and for others it will be higher. To check your rates for 2019/2020 go to our rating tool, www.tasman.govt.nz/my-property/rates/search.

The total rates revenue increase for 2019/2020 in this Annual Plan is 0.32% higher than set out in our LTP 2018–2028. The main drivers for this increase are:

- Replenishing the Rivers activity emergency fund that was depleted through activities recovering from ex-cyclones Fehi and Gita.
- Reviewing the Tasman Resource Management Plan (TRMP) and Tasman Regional Policy Statement. This is required to ensure these plans guide the management of Tasman's natural and physical resources.
- Improving our ability to deliver our functions and meet community expectations now and in the future.
- Higher insurance premiums.

FOR 84% OF RATEPAYERS RATES WILL RISE BY LESS THAN \$100



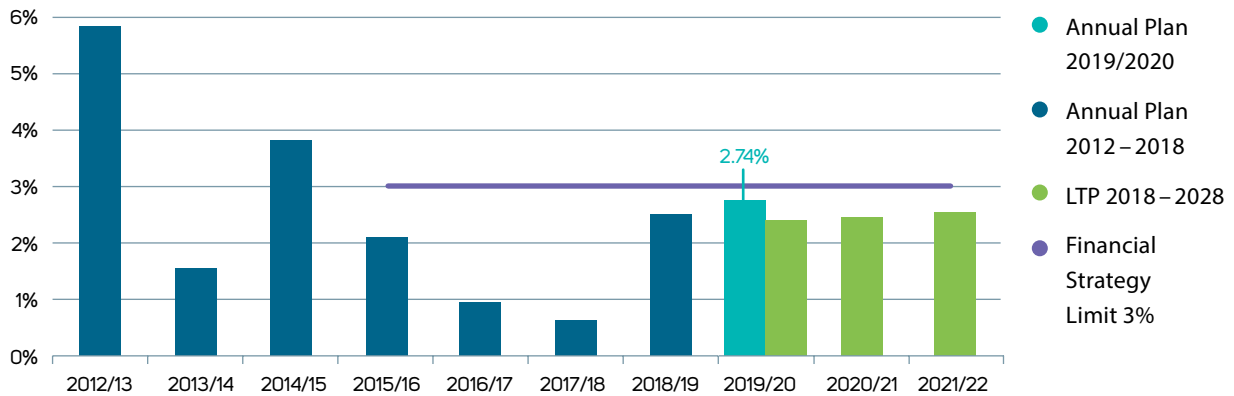
- Decrease
- \$0–\$50
- \$50–\$100
- \$100–\$200
- \$200–\$400
- \$400–\$600
- More than \$600

Note: figures exclude volumetric water charging which varies depending on water usage.



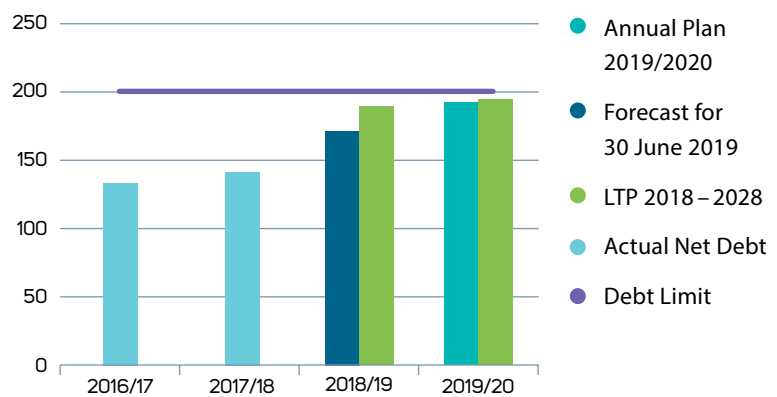
WHERE THE MONEY COMES FROM (CONT.)

BUDGETED RATES INCREASE (EXCLUDES GROWTH)



We use debt to pay for many of our infrastructure and other projects that create assets. This helps spread the costs of the assets across their lifetime.

TOTAL NET DEBT (\$M)



WHERE THE MONEY GOES

CAPITAL EXPENDITURE (TO PURCHASE OR CREATE ASSETS) – \$39.7 MILLION



OPERATIONAL EXPENDITURE* – THE COSTS OF PROVIDING ONGOING SERVICES – \$96.2 MILLION



*Excludes depreciation. **Council Enterprises, Governance etc. Graph totals rounded

Thanks for your feedback on Tasman's future

In late January and early February we asked for your input into some high-level options for how Tasman should grow over the next 30 years.

Thank you to everyone who took the time to think about the future of your communities and how they should develop – 227 individuals and 50 companies or organisations provided feedback through the consultation, which was a joint effort between the Tasman District and Nelson City councils.

Of those who took part, 150 of you were from the Tasman area.

The results

We asked for your thoughts on three options for directing future population and business growth: Should we spread out

from our current populated areas, intensify them, or start from scratch by creating new townships?

The most preferred growth option from Tasman residents who provided input was to intensify by focusing growth in existing centres. The option most of you liked least was to start new settlements from scratch.

As well as letting us know which options you liked and disliked, you also provided valuable information on some of the considerations we need to pay particular attention to as we plan for the future.

Next steps

The initial feedback round was just the start. Now we have some guidance from the community, we will begin refining the options so we can present some more detailed growth options.

Those will be the subject of another round of consultation with the community, scheduled for April this year.

We are working towards finalising our strategy for growth by July. Once the strategy is in place, it will inform reviews of our planning rules and other areas that impact the way our communities grow.

The top five considerations you identified:



Climate change responsiveness and CO² reduction



Preservation of natural landscapes



Affordable housing (such as lowering land costs)



Diverse housing choices



Preservation of flat productive land

Creating young leaders through practical training

Volunteer Nelson is seeking expressions of interest for the Tasman Young Leaders Programme.

Now in its fourth year, the programme helps 10 young people (16 - 24 years) work towards a 45 Credit NCEA Level 3 Certificate in Youth Work with the help of Volunteer Nelson and Youth and Community Works.

Gordon Oldfield, Manager of Volunteer Nelson says the programme always brings out great ideas from the participants.

“Young people seem to have a sharpened sense of social justice, especially as they begin to see the issues that unfold around them as they experience life. We look forward to seeing what projects they come up with.”

The programme begins with residential training at Marahau Outdoor Education Centre (Thursday 25 April - Monday 29 April) where participants learn about youth development theory, ethics, leadership and group work, in a supportive and fun environment.

Following the training week participants are supported to mentor a young person and to lead or assist with a youth development project.

In the past these projects have been everything from fundraising clothing sales to beach clean-ups and art exhibitions. We ask that participants include 10 other young people in their projects, therefore increasing the reach of the programme to a total of 110 young people in the region.

At the end of the programme, participants will gain the Level 3 New Zealand Certificate in Youth Work through Careerforce, which provides them with 45 credits and a pathway for entry into careers in the youth-development sector.

Programme graduate Tom explains: “It’s a good opportunity to further my knowledge on how to help my community”.

Applications close Wednesday 20 March.

To find out more about the programme or register interest visit: volunteernelson.org.nz/young-leaders/.

Email holly@volunteernelson.org.nz or phone 03 546 7681.



NEWSLINE UPDATES



KEEPING YOU INFORMED ABOUT NEWS AND EVENTS IN THE TASMAN DISTRICT • 8 MARCH 2019

Don't be *that* person

We'd like to remind everyone that parking over fire hydrants isn't a very good idea. Ever.

It doesn't matter if you're just popping to the shop, the bank, or visiting someone, if Fire and Emergency NZ need to attach a hose, you don't want to be the person in their way!

The NZ Road Code says you must not park or stop your vehicle on, or closer than 50cm to, a fire hydrant. Our enforcement officers will ticket offending vehicles.

Please don't be the person who slows the firefighters down during their essential work.

Wastewater Pump Station Remedial Works – Ledger Goodman Park

Repair works are currently underway at the Ledger Goodman park pump station and as part of that we are taking the opportunity to do remedial work on the nearby manholes and pipework in Ledger Avenue.

From Thursday 14 March to Friday 5 April, we will be working in Ledger Avenue directly adjacent to the pump station replacing two manholes and extending or replacing sections of pipe. This work will impact on pedestrian and vehicle access around Ledger Avenue. Pedestrians may need to cross the road around the works however, access to properties in the street and to Ledger Goodman Park will be maintained at all times.

- Thursday 14 to Friday 22 March a short section of Ledger Avenue near the park entrance will be one lane with Stop/Go control.
- Monday 25 to Friday 29 March a short section of Ledger Avenue adjacent to the pump station will be closed to all vehicles.
- Monday 1 to Friday 5 April the same section of Ledger Avenue will be one lane with Stop/Go control.

For any questions regarding the work at the pump station, please contact Juliet Westbury on 03 543 7261 or Kim Arnold on 03 543 8577.

ROAD CLOSURES



Proposed closures

Applicant: Concrete and Metals Limited

Event: Sewer works

Location of road closure: Greenwood Street, Motueka, between Wilkinson Street and York Street.

Date and time: Monday 25 March to Friday 29 April 2019, 7.00 am to 5.00 pm.

Alternative dates: Monday 1 to Friday 5 April 2019, 7.00 am to 5.00 pm.

Monday 8 to Friday 12 April 2019, 7.00 am to 5.00 pm

Date objections close: Friday 15 March 2019.

If you have an objection to a road closure please email info@tasman.govt.nz.

Approved closures

Applicant: Downer Limited

Event: Sewer works

Location of road closure: Ledger Avenue, Motueka. From number 7 and 11 Goodman Drive to number 1 Ledger Avenue. Residents will have vehicle access.

Date/time: 25 - 29 March 2019, 8.00 am to 6.00 pm.

Rates penalties waiver for those affected by Pigeon Valley fire

If you were affected by the Pigeon Valley fire and have had penalties added to your bill, we have a policy that allows us to waive them.

We encourage anyone in this situation to apply for a penalty waiver under clause (d). Download the form at tasman.govt.nz/link/rates-penalty-waiver-form.

Customers are also invited to get in touch with the rates team to arrange a payment plan if they are unable to make up the rates currently owing by the time the fourth rates instalment is due on 20 May.

Maritime events

Temporary reservations and speed limit uplifting for maritime events.

Tasman District Council Harbourmaster has/may soon grant authorisations for the following events. Due to navigation safety requirements, water users not involved in these events may be excluded from defined areas during these activities. Notices will be placed at nearby access points during these events.

Further details for these and any new events may be viewed at tasman.govt.nz/link/maritime-events.

| Event Date | Location | Activity |
|------------|----------|-------------------------|
| 31 March | Mapua | Mapua Boat Club Regatta |

Healthy hive check

Beekeepers know that caring for bees can be a tricky business, and sometimes a little help can go a long way. The Nelson Beekeepers Club is running a Healthy Hive Check programme that offers beekeepers the chance to have their hives inspected. This will be free of charge and completed by a team of experienced beekeepers. This is open to anyone that has a beehive in the Nelson-Tasman region.

We are aiming to check as many hives as possible over one weekend in April, with a focus on identifying American Foul Brood disease or symptoms, varroa infestation and general colony condition. It will also be a chance to get rid of old or unused beekeeping gear which can be a source of disease.

Interested? All you have to do is go to the Nelson Beekeepers Club website, and follow the link to the Healthy Hive Check where beekeepers can register their own hives.

The website address is nelsonbeekeepers.org.nz

This initiative is run by the Nelson Beekeepers' Association.



24 HOUR ASSISTANCE: PHONE YOUR LOCAL SERVICE CENTRE:

RICHMOND 03 543 8400 • **MURCHISON** 03 523 1013
MOTUEKA 03 528 2022 • **TAKAKA** 03 525 0020

NEWSLINE UPDATES



KEEPING YOU INFORMED ABOUT NEWS AND EVENTS IN THE TASMAN DISTRICT • 8 MARCH 2019

HAVE YOUR SAY:



Submissions open: Leases for community groups

Submissions close on Wednesday 10 April 2019.

We're intending to grant leases to various community groups around the District, to support community groups to provide a range of sporting and cultural activities in different locations across our District. We are now seeking public submissions on these arrangements for the following five groups/locations. The Council is obliged to publish a public notice for leases that are not covered by an existing management plan.

The leases will formalise existing locations/uses by the respective community groups. None of the intended leases involve a new activity by a community group.

List of leases

| Name and Address of Group | Location |
|--|---|
| Aorere Futures Trust, Parapara Beach Road, Parapara | Parapara Inlet Beach Esplanade Reserve, Golden Bay Ward |
| Golden Bay Collectible Vehicles Club, "Brownie's Inn Building", 2032 Takaka Valley Highway, Takaka | Golden Bay Recreation Park, Golden Bay Ward |
| Wakefield Community Toy Library, 61 Edward Street, Wakefield | 61 Edward Street, Wakefield (Former/ historic Wakefield Library Building) Moutere-Waimea Ward |
| Tamaha Sea Scouts, 84 Aranui Road, Mapua | Mapua Recreation Reserve, Moutere- Waimea Ward |
| Morepork Dart Club, 20 West Avenue, Richmond | Ben Cooper Park, Richmond Ward |

Have your say: If you would like to send feedback on all or any of the leases please write to us at info@tasman.govt.nz with the subject line Community Group Leases.

If objections to granting all/any of these leases are received, a formal hearing will be held. If you do provide feedback, please advise whether you would like to appear if there is a hearing.

All feedback becomes public information.

If you have any questions or would like more information, including plans, please contact Margot Wilson on 03 543 8400.

COUNCIL MEETINGS:



Unless otherwise stated, all meetings will be held at Council Chambers, 189 Queen Street, Richmond.

Golden Bay Community Board

Collingwood Firestation, Tasman Street, Collingwood. Tuesday 12 March, 9.30 am. Public forum

Audit and Risk Committee

Thursday 14 March, 1.30 pm. No public forum

Joint Council Workshop - Future Development Strategy

Tuesday 19 March, 9.30 am. No public forum

Motueka Community Board

Motueka Service Centre, 7 Hickmott Place, Motueka. Tuesday 19 March, 4.00 pm. Public forum

Tasman Regional Transport Committee

Monday 25 March, 9.30 am. Public forum

The Ballet Foundation invites you to a reception with the Royal New Zealand Ballet

Meet the RNZB dancers and artistic director Patricia Barker. Enjoy local wines, canapes and our silent auction. Thursday 21 March, Suter Art Gallery. 5.30 - 7.30 pm, Bridge Street Nelson. Tickets: \$45 (Friends of the RNZB and the Suter Gallery \$40). RSVP to trustees@balletfoundation.org.nz. All proceeds go to the Ballet Foundation to build a sustainable fund to provide long-term stability for ballet in New Zealand.

BRAND NEW

SHOWHOMES

3 Berryfield Drive, Richmond | 1 Malone Crescent, Richmond

G.J. Gardner. HOMES

Proud to be sponsoring:



CONTACT 03 543 9502 | 0800 42 45 46 | www.gjgardner.co.nz

NELSON OFFICE 195 Queen Street, Richmond

OPEN Monday to Friday, 8.00am - 5.00pm



COMMUNITY RELATIONS



Richmond Aquatic Centre updates

- Due to the critical water levels in the Tasman region, the Richmond Aquatic Centre will be closing the tots and toddler pools, and the family and adult spa pools. All showers will be closed apart from the two-minute rinse showers provided poolside for use if required. The wave pool, lane pool, hydrotherapy pool and lesson pool will remain open. We apologise for the inconvenience this causes and we appreciate you working with us to conserve water at this critical time.
- The lane pool will be closed while tiles are removed and replaced from 25 March to 25 May 2019. Options are being considered for re-using the water in the lane pool when it is drained. Thanks for your patience while the work is carried out.



Popular Positive Ageing Expo returns

Friday 22 March, 10.00 am – 3.00 pm at the Headingly Centre, Richmond

With 80 stalls and activities as diverse as vintage car displays, riding an e-bike, making your own bike-powered fruit smoothie, watching live music, patting a Nelson Ark dog, playing a game of petanque, getting your blood pressure checked, creating an artwork, gardening tips and tech tips such as operating your cellphone, we guarantee there'll be plenty of interest.

Admission is free, with complimentary tea, coffee and biscuits provided. Lunch is available for purchase.

Forest Fire Concert with the Warratahs and friends

Saturday 23 March 2019, 2.00 pm - 7.00 pm.

Richmond Park Showgrounds, Lower Queen Street, Richmond.

Join this community recognition and celebration of the Emergency Services and Civil Defence.

History Brought to Life

Sunday 17 March, Washbourn Gardens.

Performances start at 2.00 pm, 2.30 pm, 3.00 pm.

Discover the untold historic stories of Washbourn Gardens. This is not your ordinary history tour, actors will entertain you as they showcase what life was like many years ago. Come learn about your local history.

Neighbourhood Support Waimea Family Fun Day

Sunday 24 March 2019, 1.00 pm - 4.00pm.

Easby Park, Marlborough Crescent, Richmond.

Celebrate Neighbours Day Aotearoa 2019 with an afternoon of family-friendly fun and information. The NBS inflatable obstacle course will be available for the kids. Activities offered which entertain and inform.

Creative Communities Scheme

Do you have a great community arts project that needs some dollars to make it happen?

Tasman District Council's Creative Communities Scheme has money to help groups and individuals running arts projects in the Tasman District.

Funded by Creative New Zealand, the funding is for art projects that have broad community involvement, involve young people, or that support the diverse arts and cultural traditions of local communities. There are three rounds of applications each year. The next round closes 10 March 2019.



NELSON MARLBOROUGH WASTE

Waste Oil Collection

Used Oil, Waste Oil, Ship Slops and Bilge Water ...

Give us a Freecall
0800 725 326

Make an Online Booking
www.nmwaste.co.nz

SITWISE GREEN 2018/19