

Newsline



Keeping you informed about news and events in Tasman District



Mapua Estuary

Speed limit initiatives in Tasman **P.3**

NZCT South Island Masters Games **P.4**

News from the Libraries **P.8**

Has your Rates Bill changed?

You may notice a change when you receive your first rates bill for the 2015-2016 year, if your water is charged through an urban water meter.

From 1 July 2015 the fixed daily charge has been moved to your rates bill as a service charge. One of the key benefits of this change is that it allows the fixed water charge to be paid for in the same way you pay your rates, avoiding the inconvenience of large single payments (e.g. it can now be spread out over smaller monthly payments).

This is not an increase in your water charges, just a movement between your water account to your rates account.

In summary your rates bill will go up by the same amount your water bill goes down.

As water invoices are issued in arrears the changeover to the new billing process will be spread over a period of up to six months as each area's water meters are read and the fixed charges for the period to 30 June 2015 are invoiced on your water bill.

Example Rates Account

As per the example below, the Water Supply Charge is now on your Rates Invoice.

If you are not on a Direct Debit payment plan for your water or rates invoices, you may wish to sign up to help enable your household to better manage the cost and spread it out over the full year. Contact the Council for a Direct Debit form, or download one from the Council's website, www.tasman.govt.nz

ANNUAL RATES ASSESSMENT					
DESCRIPTION OF RATES LEVIED	RATING CATEGORY DETERMINATION	FACTOR	VALUE OF FACTOR	RATE/CHARGE	AMOUNT
General Rate	Districtwide	Capital Value	355,000	0.2558c/SCV	908.03
Uniform Annual General Charge	Districtwide	Fixed Amount	1	\$290.00/prope	290.00
Wastewater - 1st Pan	Service Prov/Avail	Fixed Amount	1	\$742.59/pan	742.59
Stormwater UDA - Richmond	Location	Capital Value	355,000	0.06420c/SCV	227.91
Refuse/Recycling Rate	Location	Fixed Amount	1	\$1133.93/prope	133.93
Shared Facilities Rate	Districtwide	Fixed Amount	1	\$77.27/prope	77.27
Mapua Rehabilitation Rate	Districtwide	Fixed Amount	1	\$11.56/prope	11.56
Museums Facilities Rate	Districtwide	Fixed Amount	1	\$61.57/prope	61.57
District Facilities Rate	Districtwide	Fixed Amount	1	\$52.62/prope	52.62
Facilities Operations Rate	Location	Fixed Amount	1	\$47.04/prope	47.04
Urban Water Supply - Serv Chge	Service Provider - meter	Fixed Amount	1	\$312.16/meter	312.16
Regional River Work - Area Z	Location	Land Value	185,000	0.0252c/SLV	46.62
Total Annual Rates				(incl GST)	\$2,911.30

Message from the Mayor

As a Council we aim to provide services our community want and need as effectively and efficiently as possible. Sometimes this is best achieved by sharing the services with neighbouring Councils. We work together when there is mutual benefit to the communities we represent.

In this region alone we share nearly 100 services with Nelson City Council and also collaborate with Marlborough District Council. The fact that we work in such close collaboration with each other ensures that our decision-making processes and service delivery can provide the most mutually beneficial environment for everyone living in the Nelson Tasman area. Together, we continue to explore opportunities as to where and how we can further improve services for the communities' benefit.

Within this partnership however, there remains the recognition that our respective authorities service very different settlements; each with their own unique features and needs. You only have to look

at the recent Long Term Plans to see the change in our priorities and how we approach these. This is driven by you, the people who choose to live in our communities.

As Councils we represent these needs and aspire to provide the very best services possible. Our challenge and our commitment are to do this within the financial envelope the ratepayers in each area invest in us. We will continue to explore opportunities for sharing service delivery when it is in your interest, the residents of our District.

Mayor Richard Kempthorne



What would you do with better internet?

The first part of our funding bid for extended broadband internet access and mobile coverage in Tasman has been submitted. The response has been excellent - and we're half way there.

We now need to submit a community-driven Digital Enablement Plan to prove to the Government that there is a genuine appetite in our District for improved services. More than that, we also need to show how the community would use better internet to develop and strengthen into the future.

It can't happen without you. "We need to gather community-driven projects which solve issues for local communities," says Cr Judene Edgar.

"It is important that everyone helps identify solutions – this is one of the key funding decision criteria set by the Government. If we want the funding, we need to show broad support."

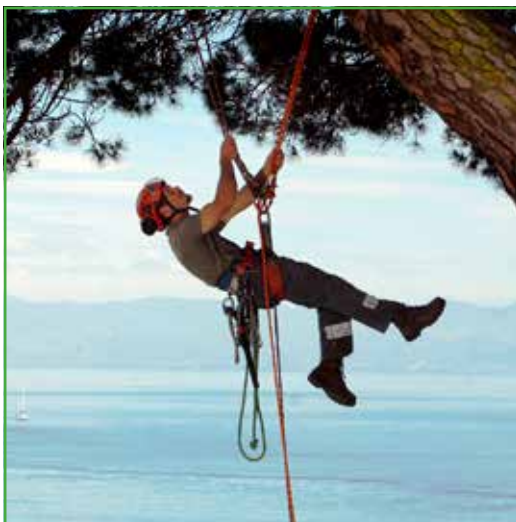
A new survey has been created to answer the question 'What would you do with better internet?' The short survey covers community, education and business questions.

Please take the survey at:
www.surveymonkey.com/r/betterinternet

At stake is a share of new funding to extend the existing fibre networks to new urban areas, improve rural broadband access and tackle mobile phone blackspots.

For more information, please email Tara Fifield at tara.fifield@tasman.govt.nz.

The final decision on which areas will receive the extra services will be made by the Government. Regardless of the outcome, by creating a community plan we'll be focusing on a direction for our digital future.



TASMAN'S TOP TREE TEAM

Nelmac Tree Care is #1 in the top of the south.

Call us for a free quote for: canopy reduction, tree removal, pruning, hedges & all tree work.

0800 635 622

 **NELMAC**
TAKING CARE OF YOUR ENVIRONMENT



Speed limit initiatives in the Tasman District

In September this year, the Council will be undertaking a review of its speed limit bylaw, which will incorporate a full consultation programme. However, between now and when any changes are implemented as a result of the review a small number of changes will be made.

This is in addition to the recent agreement to erect school zone signs. These signs will be erected outside schools on both sides of the road at either end of the school zone to help ensure drivers reduce their speed and remain vigilant for children. Council staff are working through the process of what signs are needed and are currently planning a roll-out programme.

At a recent workshop reviewing speed limits throughout the District the Council acknowledged they are limited to what speeds they can set by the Speed Limit Rule guidelines as set out by New Zealand Transport Agency (NZTA).

It was decided that the de-restricted or open road signs would be more appropriate for use on gravel roads than the 100km/hr signs. Speed advisory signs would be used to identify hazardous sections. This takes into account that most people will drive to the road conditions.

Councils take combined approach to land development

Tasman District and Nelson City Councils are working together on the development of a Combined Land Development Manual.

The combined Land Development Manual will set out the engineering standards for residential and commercial developments in Nelson and Tasman in relation to the roading, water supply, stormwater and wastewater services. This will enable developers to have a common platform when considering the infrastructure needs in both areas with consistent minimum standards and design requirements. These standards can also be referenced in each council's Resource Management Plan.

Environment and Planning Manager Dennis Bush-King said the benefit of aligning the council approaches was to provide a common perspective for development.

"The aligned standards will promote efficiency and cost effectiveness through a consistent approach to infrastructure requirements. There will still be room for variation – we need to allow for the different geographies of rural and urban areas. Aligning our approaches to engineering standards makes a lot of sense."

The steering group that will oversee the project is comprised of councillors and staff from Tasman District Council and Nelson City Council, a developer representative, a construction industry representative, as well as representatives of the New Zealand Institute of Surveyors and Civil Contractors New Zealand.

HOUSE & LAND PACKAGES Available now – don't miss out!



- * Mount Richmond, Hill Street, Richmond
- * Three Ridges, The Ridgeway
- * Langdale Grove, Richmond
- * Springlea Estate, Atawhai
- * Tana Pukekohatu, Grey Street, Motueka
- * Galeo Estate, Redwood Valley

Some conditions may apply.
Photos are sample only.



NELSON OFFICE 195 Queen Street, Richmond. Phone: (03) 543 9502 OPEN Mon–Fri 8am–5pm
SHOWHOME 2 Marino Grove, Richmond. OPEN Mon–Fri 11am–4pm, Sat & Sun 1pm–4pm
 0800 42 45 46 www.gjgardner.co.nz

G.J. Gardner. HOMES

Enviroschool recognised

The Envirogroup at Tasman School and teachers Fred Robertson and Rob Boomer are proud to show off the new Enviroschools' sign stating they are a Silver level Enviroschool. Their Silver self-review process, involving students, teachers and parents, was facilitated by Tasman District Council staff.

The Silver status highlights their depth of environmental learning, student leadership skills and sustainable actions since becoming an Enviroschool ten years ago. The latest project to develop a garden and potting shed has been achieved mainly through second hand sources. Maintaining and using their garden and fruit tree harvests; monitoring and taking actions for nearby streams and estuary; minimising waste and upcycling all materials for their Supreme winning entry in the 2014 Masked Parade, were just some of the great actions described. Students really valued their wonderful community support and also wanted all locals to take steps towards, and collaboratively achieve, a healthier environment.

Tasman District Council has provided staff time to support the Enviroschools Programme and projects in Tasman Schools since 2003, and the sign that they developed is now generic to Enviroschools nationally. You can find out more about Enviroschools at www.enviroschools.org.nz



NZCT South Island Masters Games!

Over 1500 keen competitors have already registered for the NZCT South Island Masters Games 2015. They will be participating in some of the 45 sports code on offer during the nine day festival of sport being held in Nelson from 26 September – 4 October this year. All participants 30 years and older, will spend time competing, socialising in the Games Village to analyse each game, share old stories from previous encounters or just enjoy the new friendships they will establish. Something Masters Games events are renowned for.

While many of the competitors return year after year to enjoy the comradery, just as many branch out and take the plunge and enter for the first time, some even starting their sporting careers in their twilight ages, at the South Island Masters Games.

The good thing about the Masters Games is that there is no entry criteria – you don't have to qualify, you don't have to belong to a club or an association, you can opt to participate at a competitive or social level and you can set yourself personal challenges to achieve. All achieved by just choosing one of the 45 sports on offer and registering.

Go on, take the plunge, go to www.simasters and register.

Civil Defence needs you!

We're fortunate to have great people volunteering for Civil Defence in our communities. Right now we have two leadership roles we are looking to fill, one in Murchison and two in Golden Bay.

The Local Controller is the person who leads the response to a civil defence event, working with emergency services and volunteers. In Murchison we are looking for a new Local Controller. In Golden Bay we are looking for two 'Alternates' to support our existing Local Controller.

All training is provided and you are supported by other volunteers and staff based in Richmond. The role is voluntary but your costs will be covered. You will be offered the opportunity of professional development courses in Wellington and Christchurch, as well as locally.

We are looking for community-oriented leaders who can work with local and government agencies, and who have a passion for helping to build a resilient community. You don't have to be an expert, we are prepared to invest in the right person and we'll give you development opportunities that will benefit you in any role.

**For further information, please contact
Roger Ball on Ph. 03 543 7293 or
Email: roger.ball@tasman.govt.nz**

HAS YOUR WASTE WATER SYSTEM BEEN SERVICED RECENTLY?

WASTE WATER SYSTEM SERVICING

**Qualified drainlayers and waste water technicians
Covering the Nelson-Tasman region**

Agents for Hynds and RX Air Tec – servicing all other makes and models

**Contact: Alex Bint or Ron Way
Ph. 03 528 8888**

 **thinkwater** TASMAN BAY



join our community:
Twitter • Facebook • Website

Public Notices

Notice of Road Stopping

At the request of the adjacent landowners, Tasman District Council is notifying its intention to stop a portion of un-named and unformed legal road which runs off Stringer Road in Redwood Valley. The proposal to stop this section of unformed road is being considered pursuant to Schedule 10 of the Local Government Act 1974.

The land is shown as Section 1 on SO Plan 488508. The land area is approximately 7282 square metres.

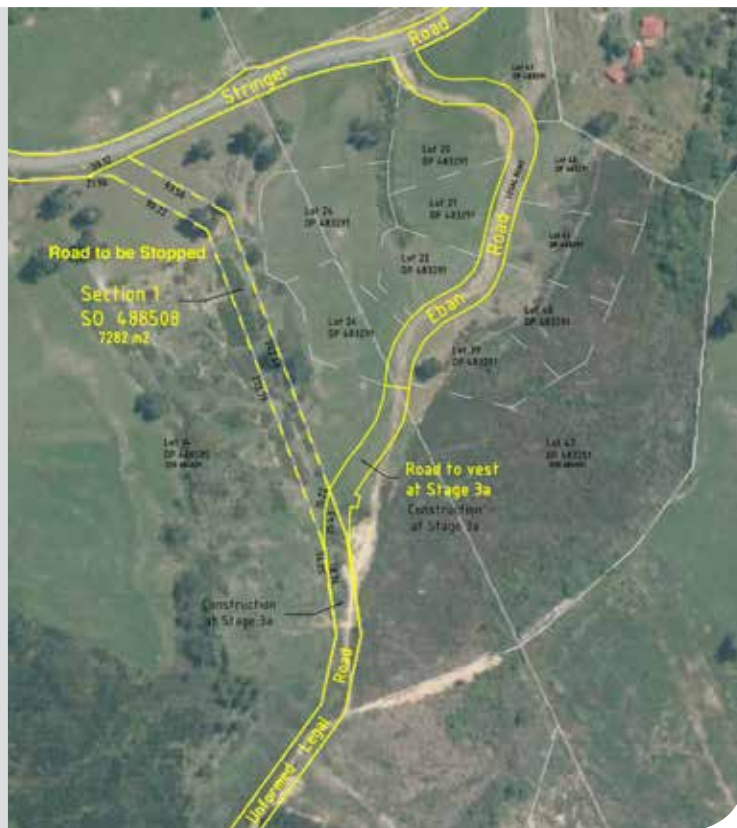
The road stopping application is being made by Tasman Limited, which owns all the land adjacent to the road to be stopped. If the applicant is able to acquire the land involved, it will amalgamate it with adjoining land. If the road stopping is approved this will facilitate what the applicant believes will be a more logical subdivision when that adjacent land is subdivided.

The road proposed to be stopped is being replaced with Eban Road in a slightly different location.

Plans of the proposed road stopping are available by emailing: info@tasman.govt.nz. Plans may also be viewed at the Richmond Office of Tasman District Council. Copies of plans, and this public notice, will also be available on the Council's website.

For further information please contact Robert Cant at Tasman District Council, Ph. 03 543 8400 or Email: robert.cant@tasman.govt.nz

Any objections to the proposed road stopping should be made in writing to the address below and must be received no later than 4.00 pm on Monday 28 September 2015. This is the first of the two notices required under the Local Government Act 1974.



New Zealand

Shake Out

NATIONAL EARTHQUAKE DRILL
9:15AM, 15 OCTOBER 2015

REGISTER NOW AT:
WWW.SHAKEOUT.GOV.TZ

SURVEYING & RESOURCE MANAGEMENT

- Project Management
- Resource Consents & Planning
- Subdivision Design & Management
- Land Development Engineering

STAIG & SMITH LTD
ENHANCING THE LAND

81 Selwyn Place, Nelson • Ph 03 548 4422 • www.staigsmith.co.nz

FLETCHER VAUTIER MOORE
LAWYERS

Jo Bruning
Legal Executive
jbruning@fvm.co.nz

Zoe Bond
Senior Solicitor
zbond@fvm.co.nz

265A Queen Street, Richmond Ph: (03) 543 8301



join our community:
Twitter • Facebook • Website

Public Notices

Notice of Road Stopping

At the request of the adjacent landowners, Tasman District Council is notifying its intention to stop a Service Lane which runs off Oxford Street in Richmond near the corner of Queen Street. The proposal to stop this Service Lane is being considered pursuant to Schedule 10 of the Local Government Act 1974.

The road stopping application is being made by BP Oil New Zealand Limited, which owns land on both sides of the service lane. If the applicant is able to acquire the service lane, it will amalgamate it with adjoining land. If the road stopping is approved this will facilitate a more logical use of its land when the present site is upgraded.

For further information please contact Robert Cant at Tasman District Council on Ph. 03 543-8400 or Email: robert.cant@tasman.govt.nz

Any objections to the proposed road stopping should be made in writing to the address below and must be received no later than 4.00 pm on Monday 14 September 2015. This is the second of the two notices required under the Local Government Act 1974.

Dog Registrations expired

Anyone who keeps a dog aged three months or older is required to register it annually. Registration forms for all dogs currently on the Council's database were posted at the end of May 2015.

The fee for dogs that were not registered by 1 August 2015 increased by 50% on top of the standard urban or rural registration fee.

Infringement notices and the associated fine of \$300.00 will be served on owners who fail to register their dogs prior to 1 September 2015. Any change of details, whether it is a change of dog owner or address, must be made in writing.

Registration update forms are available from all Council Service Centres, or by emailing dogcontrol@tasman.govt.nz, or as a pdf download from the Council's website www.tasman.govt.nz

Information relating to dogs and all current fees can also be found on the Council's website.

Public Notices

Draft Abel Tasman Foreshore Scenic Reserve Management Plan Partial Review

A partial review of the Abel Tasman Foreshore Scenic Reserve Management Plan (Foreshore Plan) is underway.

The focus of the review is on four issues only:

- access to the reserve for kaitiaki responsibilities and non-commercial cultural activities;
- recreation concessions at Watering Cove and Observation Beach bays;
- provision of an additional Coastal Access Point at Tonga Quarry for a trial period; and
- drop off/retrieval of commercial hire equipment from the reserve.

Any person or organisation may make written submissions, which must be received by 4pm on Monday 12 October 2015.

View the draft Foreshore Plan partial review document and submission form online at www.tasman.govt.nz or www.doc.govt.nz.

Hard copies are available from TDC offices and public libraries in Richmond, Motueka and Takaka and from the Nelson public library.

Submissions should be made online at: www.tasman.govt.nz or emailed to: atforeshore@tasman.govt.nz

or posted to: Tasman District Council, Abel Tasman Foreshore Plan Partial Review, Private Bag 4, RICHMOND 7050

Community Notices

Annual General Meeting – Keep Motueka Beautiful

Monday 17 August 2015, 7.00 pm, Tasman District Council Service Centre, Motueka.

To be followed by a meeting of the Committee, then refreshments. Everyone welcome.

All of your Tasman District Council information www.tasman.govt.nz

"Lets make
Nelson Tasman
violence free"

TE RITO NETWORK
NELSON TASMAN VIOLENCE-FREE

www.nelsontasmanrito.org.nz

IT IS
OK TO ASK
FOR HELP

0800 456 450
www.areyouok.org.nz

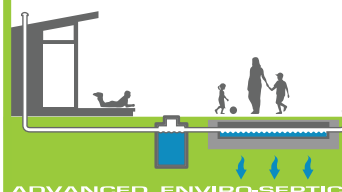
AES WASTEWATER
back to the future wastewater treatment

250,000+ installations - 20yr warranty
Lowest installed cost

NOTHING TO BREAK DOWN

Suitable for TDC Special Areas

Ideal also for retrofitting to existing septic tanks



Environmenttechnology



Servicing NZ from
Golden Bay

0800 WASTE H2O
03 970 7979

info@et.nz
www.et.nz

ADVANCED ENVIRO-SEPTIC™

Newslineupdate

Public Notices

Tasman District Council Community Grants

Applications are open for Tasman District Council's Community Grants. The Council allocates funds to support and encourage community-led projects.

To be considered, applications must be for initiatives within Tasman and/or demonstrate the benefits to Tasman residents. Ideally, the funds applied for will be for a specific service that has community support.

This year the total allocation is \$219,000 over eight categories;

- Community and Economic Development Initiatives \$30,000
- Arts/Culture/Heritage/Museums \$32,000
- Festivals and Events \$40,000
- Youth and Children \$25,000
- Social Services \$21,000
- Environment \$20,000
- Emergency Services \$16,000
- Sport and Recreation Facilities \$35,000

Applications close 31 August 2015.

Applications can be made online or you can download an application form at www.tasman.govt.nz/link/community-grants-application

Hard copy application forms are available from Council Service Centres and Libraries in Richmond, Motueka, Takaka and Murchison.

Contact Tasman District Council Community Partnerships Coordinator Mike Tasman-Jones for further information on Ph. 03 543 8403.

Keep up with the Tasman District Council Lowdown

Hear news items from the Council about current public consultations, Council and community projects, topical interviews, plus a range of notices about activities and events in the Tasman District.

Tune in to Fresh FM on Monday 11.40 am or Wednesday 3.40 pm. Nelson-Tasman 104.8, Golden Bay 95.0.

Affordable Professional Funerals

We can provide every service and option, and leave you with memories of a lifetime of love.

03 544 4400 • www.wrfs.co.nz



**WAIMEA RICHMOND
FUNERAL SERVICES**

Roading

Proposed Road Closures

The following roads are proposed to be closed as indicated below.

National Advanced Drivers School – Driver Training

17 and 18 September 2015 and 12, 13, 14 October 2015, from 10.00 am–11.00 am, 12 noon–1.00 pm, 2.30 pm–3.30 pm (approximate times):

- **Marchwood Park Road, Motueka**, from entrance at Queen Victoria Street.

Any person objecting to the proposal should lodge notice of their objection before **Friday 28 August 2015** to the office of the Tasman District Council, 189 Queen Street, Richmond.

Council Meetings

Agendas and Minutes for Council meetings can be viewed on the Council's website at www.tasman.govt.nz

Motueka Community Board Open Forum

Motueka Office, 7 Hickmott Place, Motueka, Tuesday 18 August 2015, 6.00 pm

Environment and Planning Committee

Tasman Council Chambers, 189 Queen Street, Richmond, Thursday 27 August 2015, 9.30 am Public forum

Commercial Subcommittee

Tasman Council Chambers, 189 Queen Street, Richmond, Friday 28 August 2015, 1.30 pm. No public forum

24 Hour Assistance – Phone your local office

Richmond 03 543 8400

Murchison 03 523 1013

Motueka 03 528 2022

Takaka 03 525 0020

Newsline is produced by HotHouse Communications for Tasman District Council and is printed by Printhouse on recycled/recyclable paper. For advertising and editorial enquiries please contact HotHouse on phone 03 545 7995 or Email: newsline@hothouse.co.nz

Having your
wheelie bin collected
on the same day as
your recycling?

**Definitely
Beta**

**0800 635 622
bettabins.co.nz**

Betta-Bins

Writechoices

Law for Lunch

Do you have questions about wills and estates? Do you understand how relationship property law works? Find out more at our free Law for Lunch series of talks at Richmond Library.

Peter Riley from Nelson Bays Community Law Service will be talking about the ins and outs of wills and estates on Thursday 20 August at 12.00 noon. And on Thursday 27 August he'll be covering relationship property law and what it means in real life. All delivered in easy to understand, user-friendly language and for free.

You're welcome to bring your lunch or grab a coffee and a bite to eat from the Library Café. See you there.

Reading Challenge 101

To encourage an appetite for reading, LIANZA (Library and Information Association of New Zealand Aotearoa) and Hell Pizza have joined forces for a national reading challenge.

If you're aged 5-17, you can feed the mind and the body by simply collecting a pizza wheel and borrowing books at Richmond, Motueka or Takaka Libraries.

Your pizza wheel will get clicked every time you tell us about the Tasman District library book you have just read.

Once all seven wedges are clicked, signed and stamped you can take it to the Richmond Hell Pizza shop and exchange it for a Hellthy 333 pizza. Terms and conditions apply.

Reading Challenge 101 runs from 10 August to 27 November.

Ancestry.com at your library

Are you interested in tracking down your ancestors? Are you hot on the trail and looking for more answers and connections? Ancestry.com might be just what you need to help you in your quest – and it's free for you to use at your local library.

Launched in 2006, Ancestry's historical record collection reflects our multicultural heritage and enables you to explore your family's history using local and international records. These include the convict and free settler lists, passenger lists, Australian and New Zealand electoral rolls and military records, English, Welsh and Scottish censuses, birth, marriage and death records as well as user-contributed family trees.

Head into your local library today and start your search.

Slide scanning at Richmond Library

Do you have old slides and photographs that you'd like to preserve and bring into the 21st century? Would you like to be able to share images from your past with the younger generations of your whānau? Well, now you can, using the slide scanning equipment at Richmond Library's Imaginarium.

The slide scanner transforms your slides and film negatives into a digital format. All you need to bring with you are your negatives or slides, a USB stick to record them onto and personal ID.

Bookings are essential for the Imaginarium. To book phone 03 543 8500. If you need staff help to get started let us know when you make your booking.

Your library – bringing the past and the future together

Writers in the library at Motueka

Motueka Library is delighted to be hosting two writers in the next few weeks.

First up is local author Emma Stevens talking about her latest book *Nesting on the Nushagak*, the sequel to *Walking on Ice*. Emma will transport you deep into the frozen world of Alaska and her life with the local Yup'ik Eskimo people. Meet Emma on Thursday 27 August at 7.00 pm at Motueka Library.

Then on Wednesday 16 September at 6.30 pm, Christchurch poet Frankie McMillan will be talking about how she became a writer and her latest collection of poems, *There are no horses in heaven*. Humorous and daring, Frankie's poems address the concerns of us all – what it is to be human.

To complement this event Motueka Library will have a poem tree in the library from 8-19 September. Everyone is welcome to post their favourite poem on the tree.

Winter series

Don't miss the last of Takaka Library's popular 2015 Winter Series talks. You can still catch Alan Swafford's *Lunch with Cole Porter* (apologies to Miss Otis) on Friday 14 August. Or take a drive with William E. Cooper (aka *Wandering Willie*) as he tours New Zealand on a variety of scooters and small motor bikes in *It's Not About Size, It's About Attitude* on Friday 21 August. And if you can't get to Motueka Library for Emma Stevens' talk, you can catch her at Takaka Library on Friday 28 August as she introduces her latest book *Nesting on the Nushagak*.

All Winter Series talks start at 1.00 pm. Take your lunch and settle in for an entertaining and stimulating hour.



Your not-so-small local company

- Septic Tanks • Bulk Collection • Grease Traps
- Sumps • Farm Work • Drain Jetting



WasteMINZ Compliant • Quality Service • Unbeatable Value
 Freephone 0800 725 326 • www.sepclean.co.nz • sales@sepclean.co.nz