

Newsline



Keeping you informed about news and events in Tasman District



Nelson Lakes National Park

Global Rivers Resource Consent **P.2**

Community engagement **P.4**

Tasman's dog control policy updated **P.14**

Motueka Wastewater Treatment Plant upgrade – high quality treatment solution proposed

The Council's proposed solution for the Motueka Wastewater Treatment Plant upgrade will result in savings of \$2 million and provide a higher quality of treated wastewater than the previous options that were considered. As it will be constructed on Council-owned land, there is no need to purchase or lease additional land reducing the potential cost further.

The existing Motueka wastewater treatment plant (WWTP) serves Motueka, Riwaka and Kaiteriteri. These areas have a total permanent population of around 7,500, which increases to 10,500 in the summer.

The \$7.7m upgrade of the plant will improve capacity for growth, the quality of treated wastewater, and provide a more controlled method of discharge, resulting in better public health and environmental outcomes.

The first stage of the upgrade is to remove sludge build-up from the oxidation pond. This will provide increased treatment capacity, reduce the likelihood of odour during high seasonal loadings, as well as improve the quality of the treated wastewater.

No increase in odour is anticipated during this process, but the site will be monitored daily to ensure odour is sufficiently managed.

Construction of the storage facility will begin in October 2014, and sludge removal will start at the end of January 2015.

The proposed high quality treatment solution includes:

- Pond upgrades (rock filters and bunds)
- Increased aeration in both the aeration basin and oxidation pond
- Pond cover at the oxidation pond outlet for solids removal prior to final disinfection (e.g. small floating wetland)
- Membrane filtration for final disinfection treatment.

Membrane filtration plants are in operation around the country, favoured for their high treatment quality, particularly for discharges to sensitive receiving environments (e.g. water).

continued page 3...

Message from the Mayor

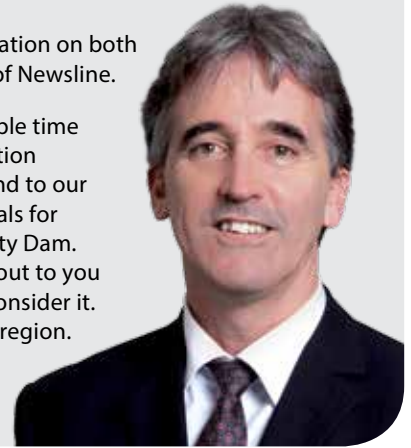
This Saturday (11 October 2014) all are invited to the official opening of the last leg of the Coastal route of Tasman's Great Taste Trail. This is a significant milestone for the trail. Tasman's Great Taste Trail has attracted large numbers of local riders and will attract an increasing number of visitors to the area. The completion of the Coastal route through to Kaiteriteri will only add to its attractiveness and the numbers riding it. One of the advantages of living in such a great place as Tasman is we have year-round access to facilities like Tasman's Great Taste Trail.

The continuing development and upgrades of the water treatment plant in Richmond, and the wastewater treatment plant in Motueka, are well advanced. While not as attractive as our coastal cycleway both these services are essential to the well-being of ourselves and

the environment. Further information on both projects is featured in this issue of Newsline.

The Council has spent considerable time recently developing the information needed so you are able to respond to our funding and governance proposals for the proposed Waimea Community Dam. This information will be coming out to you shortly and I encourage you to consider it. The proposals are critical for our region.

Mayor Richard Kempthorne



Global Rivers Resource Consent

The Council's river management team has applied to renew a global resource consent for works that have to be undertaken by the Council in Tasman's rivers. The resource consent will enable river and flood control works that require a resource consent under the Tasman Resource Management Plan. The activities it covers can be summarised as hard and soft bank protection works (e.g. rock protection, riparian planting, willow layering), gravel relocation, ripping and flood debris removal, access and tracking earthworks. All rivers and streams on rateable land within the District are included. Work activities not included are gravel extraction and river channel weed spraying which are covered by separate consents.

A key feature are Site Specific Environmental Plans (SSEMP). These are proposed for in-stream work activities in environmentally

sensitive areas/times (e.g. in fish spawning reaches/season, locations/times where particular native birds nest in-channel). SSEMP's are proposed to be submitted to the Council's Environment and Planning Department, as well as to relevant key stakeholders such as iwi, Fish and Game, DoC and Forest and Bird, for their comment prior to undertaking the works.

In addition to its soil conservation and flood protection responsibilities, the Council is seeking a more collaborative and holistic approach to be developed during the life of the consent, with greater emphasis on the wider environmental benefits such as recreation, water quality, cultural, riparian and aquatic habitat and values.

Details of the Resource Consent application can be found on pages 12-13 in this issue of Newsline.



Buller River

GREENWASTE COLLECTION

Betta-Bins



- Just \$60 for 6 months or \$120 for 12 months of fortnightly collections
- Order now and we'll drop off your 240L bin ready for summer

Betta for your pocket and Betta for the environment

www.bettabins.co.nz • 03 546 0910 • 0800 635 622

Motueka Wastewater Treatment Plant upgrade continued from page 1

Membrane filtration systems (see diagram below) prevent the passage of any particles greater than the membrane pore size. This will disinfect the wastewater, as faecal bacteria, cysts and viruses along with most solids are prevented from passing through. The quality of the final wastewater discharged to the environment will be better than previously proposed solutions (e.g. ultra-violet (UV) system). An additional advantage of membrane filtration is that nitrifying bacteria are recycled back into the pond which allows for further ammonia reduction in the pond.

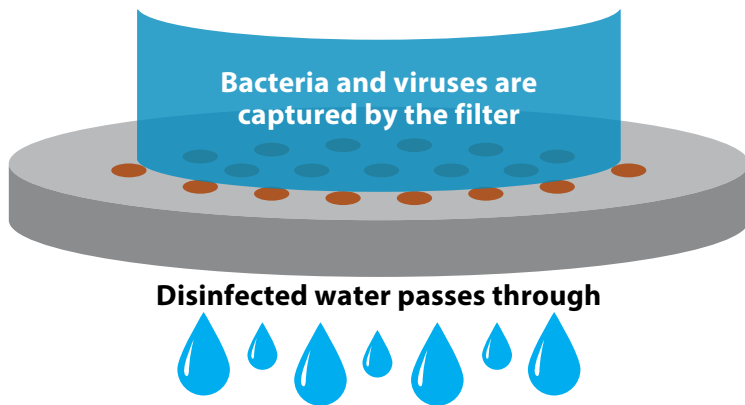
While the existing wetlands will be decommissioned from the treatment process, recent stakeholder feedback has requested the wetlands be maintained as a habitat for local flora and fauna. The wetlands can be maintained by discharging a small volume of treated water into the existing wetlands. This process can be incorporated into the design of the upgrade.

The Working Party has unanimously supported this option.

The Council and iwi are seeking feedback on the treatment solution.



Wastewater samples before and after membrane filtration



Feedback sought

A meeting is to be held to gather feedback from residents on the treatment solution at the Motueka Wastewater Treatment Plant.

Venue: Motueka Memorial Hall

Date: Thursday 16 October 2014

Time: 4.00 pm – 7.00 pm

Council staff and representatives from Tiakina te Taiao will be on-hand for brief presentations and to answer any questions.

For any queries, please contact the Tasman District Council Project Manager, Jeannie Homesley, Ph. 03 543 8400 or Email: projects@tasman.govt.nz

Better water for Richmond – new water treatment plant

Construction of the new water treatment plant in Richmond is progressing to plan.

The treatment plant will blend water and treat it with UV filtration before pumping the water to reservoirs in Richmond. This means water will be the same quality across the network, provide greater security of supply and provide for increased future demand.

The project includes a treatment plant building, reservoir tank and changes to the pipe network between the Waimea Bores and the new treatment plant, mostly between Headingly Lane and Swamp Road. Most of the pipework in Lower Queen Street is now complete, and there will be a final period of works when the new mains pipes are connected to the new plant.

The treatment plant building is being built on the corner of McShane Road and Lower Queen Street opposite the Grace Church/Headingly Centre. The walls of the building have a textured surface to make it more attractive.

Construction Programme

The main construction work will be completed by December 2014, including a 1000m³ glass-coated steel water tank. There will be a comprehensive testing and commissioning programme starting in January 2015, with the project on track for completion by the end of July 2015. The works include landscaping and screening in keeping with the Lower Queen Street environment.

You can follow the construction on the Tasman District Council's 'construction webcam'. Simply go to www.tasman.govt.nz/tasman/webcams-in-tasman/construction-webcam

**For any queries, please contact
Tasman District Council, Ph. 03 543 8400**

WE WILL REMEMBER THEM...

Gifting the past to a new generation...

Caleb Hooper (6) looks on as his grandfather Mark Pullan, lights a candle of remembrance for one of the ten soldiers named on the WW1 Roll of Honour, housed in the Rutherford Memorial Hall. The WW100 Commemoration Ceremony for WW1 Memorial took place on Sunday 7 September 2014 and was well supported with 75 (including two descendants), invited and community guests attending. Anne Nash, (rear) seated at the 140 year old harmonium from old St Lukes church, accompanied the service. A great country morning tea followed, giving everyone a chance to meet and mingle.



Feedback sought on community engagement

The Tasman District Council is to adopt a Significance and Engagement Policy. What is that you may ask?

Engagement is a responsibility the Council takes very seriously. Community input to decisions is key to ensuring the views of residents and ratepayers are taken into account. Significance in this context is about how the Council will assess the 'significance' of its decisions in relation to the effect they may have on people, assets, Council finances or the District as a whole. Once assessed it will determine and guide the level of engagement the Council should invest in.

The Council already has separate policies for both significance and engagement however, recent amendments to the Local Government Act have determined there should be one policy covering both subjects.

The Council has taken the opportunity to review the policies as a result of the legislative change and is looking for feedback prior to the policy's adoption on 20 November 2014.

The Significance and Engagement policy and feedback forms can be found online at www.tasman.govt.nz/feedback and in the Council's service centres and libraries.

Feedback closes 4.00 pm, 30 October 2014.

**2014 Nelson
Registered Master
Builder's
House of the
Year Awards.**

**We entered 3 homes.
How did we go?**



That's quality you can rely on.

We build homes for young families, singles and retired people, from modest townhouses through to expansive country estates.

Why not discuss your plans with us?

Build with confidence – choose NZ's favourite home builders

Phone 03 543 9502
0800 42 45 46 www.gjgardner.co.nz

NELSON OFFICE 195 Queen St, Richmond. OPEN Mon–Fri 8am–5pm
SHOWHOMES 29 Hill St Nth & 2 Marino Gr, Richmond. OPEN Mon–Fri 11am–4pm, Sat & Sun 1pm–4pm

G.J. Gardner. HOMES



Rural Fire Readiness exercise

The Nelson region was recently caught between two major rural fires. Luckily the fires were fictional and were the basis of an exercise to test the multi-agency response and capabilities of Rural Fire, the Police, the Fire Service, the DHB and Civil Defence Emergency Management.

Based in Hira and St Arnaud the fires tested the agencies' ability to work across multiple sites, with a central command structure operating out of the new Civil Defence Emergency Management centre in Richmond.

Principal Rural Fire Officer, Ian Reade said the Rural Fire Network wanted to test the region's response to a major fire and build on the exercises they hold annually, so decided to invite the other agencies along.

"As we enter our 'danger period' within the region this exercise also gave us the opportunity to establish relationships with those we may need to work alongside in the coming summer.

'Exercise Kaka' ran very successfully on Wednesday 17 September 2014 with locals noticing a number of emergency vehicles driving throughout

the region. The exercise also involved a large scale emergency evacuation within its scenario, testing skill sets and logistics.

"We wanted to establish a scenario that provided us with the best test of our systems and roles so that if a real emergency does occur we are in the best position to deal with it. In doing so we can save valuable time in a real event, with experienced and knowledgeable personnel getting right into the task of preventing harm to lives and property."

As we head into the warmer months, residents can also do their bit to prevent fire taking hold, including cleaning roofs and gutters of needles and leaves and storing firewood at least 10 meters away from their home, or as far away as possible. In bush areas, residents and landowners should thin trees and remove accumulations of dead branches and stem wood underneath and in between trees.

For more information you can request a FireSmart Home Owner's Manual or speak to a Community FireSmart Advisor by contacting the Rural Fire Network, Ph. 03 544 2441 or visit their website www.ruralfirenetwork.co.nz

Draft Tasman Regional Land Transport Plan Summary of Information – background

The Draft Tasman RLTP is prepared to gain funding from Central Government for undertaking work programmes proposed work in Tasman.

The document contains all activities proposed by Tasman District Council and all those proposed by the Transport Agency. The activities proposed by the New Zealand Transport Agency and are not subject to consultation through any other process. Any submissions on any activities proposed by Tasman District and the Transport Agency should be made through the Draft RLTP. The document includes a joint front section prepared by the Top of the South councils (Marlborough District Council, Nelson City Council and Tasman District Council) with each council will be responsible for delivering their own programme. The Draft RLTP also includes a financial forecast of anticipated expenditure and funding sources for the activities across Tasman for the 10 financial years with a focus on the first six years which will be reviewed every three years.

The Tasman Regional Transport Committee (TRTC) is seeking your feedback on how this programme aligns with Tasman's transport objectives and the Government Policy Statement on land transport.

The Transport Agency operates the State Highways. The Plan also includes all the significant projects proposed for the Top of the South. These have been developed in discussion with the Top of the South council's and NZTA to reflect the economic needs of the region. The significant projects mainly focus on state highways as these are the key routes to connecting the different parts of the top of the south and beyond.

It must be stressed that Tasman's programme is a forecast of anticipated revenue and expenditure plus a proposal for funding support from the National Land Transport Fund (NLTF). It is not a funding commitment. Delivery of the programme is reliant on Tasman District Council and the Transport Agency securing the funds and delivering the programme.

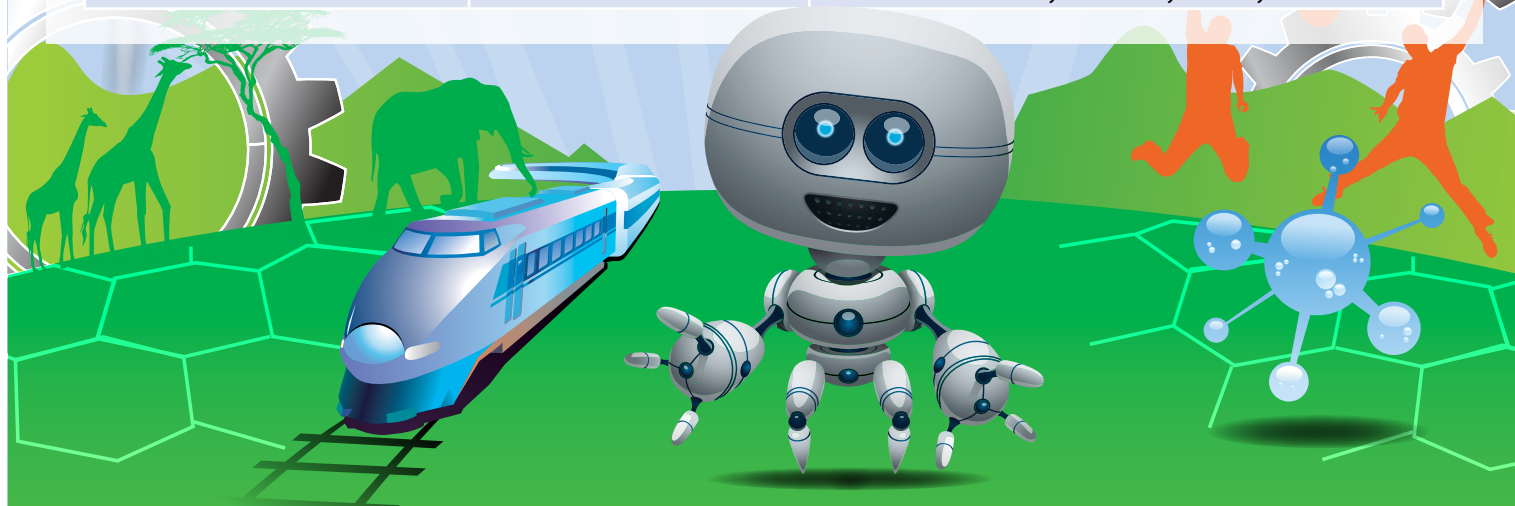
For the full 'Draft Tasman Regional Land Transport Plan – Summary of Information' – see pages 8–10 in this issue of Newsline



Cawthron Institute is partnering with a number of other organisations in the region and staging the 'Celebrate Science with Cawthron' event in October 2014. This will be a week of activities, interactive games, demonstrations and informative talks (all for free) with the aim of making science more accessible to families.

It kicks off with a family fun-day on Sunday 12 October 2014, followed with evening lectures throughout the week, and ends with three schools-only days packed with activities for primary students. The weeks' programme is as follows.

Date	Venue	Event
Sunday 12 October 10.00 am – 5.00 pm	Victory Community Centre, Totara Street	FAMILY FUN DAY
Monday 13th October 7.30 pm – 8.30 pm	NMIT, Kowhai Lounge in the Student Centre	EVENING LECTURE: Air Pollution – Causes & Consequences with Dr Jackson
Tuesday 14 October All day	Parklands School	SCHOOLS FUN DAY (TASMAN REGION)
Tuesday 14 October 7.30 pm – 8.30 pm	NMIT, Kowhai Lounge in the Student Centre	EVENING LECTURE: The Maitai – An informative talk by the Nelson City Council and Cawthron Institute
Wednesday 15 October 6.00 pm – 7.00 pm and 7.30 pm – 8.30 pm	NMIT, Kowhai Lounge in the Student Centre	EVENING LECTURES: 6.00 pm: Science students 'Lightning Talks' 7.30 pm: What's in our food and what's the science that's keeping us safe? Dr Puddick of Cawthron Institute explains all
Thursday 16 and Friday 17 October All day	Victory Community Centre	SCHOOLS FUN DAY (NELSON REGION)
Thursday 16 October 7.15 pm – 9.15 pm	NMIT, Kowhai Lounge in the Student Centre	EVENING LECTURES: 7.15 pm: Ecology and aquaculture with NIWA's Dr Ken Grange 8.15 pm: New Zealand's fisheries, the past, present and future with the Ministry for Primary Industry



Community partnerships

Community Grants 2014/15 Allocations

The Council understands that a small grant to help meet the financial costs of a project enables volunteers to put their skills and energy into actually making the project happen. Projects that apply for a Community Grant must take place within Tasman and/or demonstrate the community benefit that will result for residents of our District.

The Tasman District Council Community Grants, which closed on 31 August, received 157 applications requesting \$395,034. The subcommittee met on 23 September to consider the applications and allocated \$189,701.13 over 110 organisations.

Tasman Creative Communities Scheme

Do you have a great community arts project that needs some money to make it happen? The Tasman Creative Communities Scheme may be just what you're looking for. The next round closes on 10 November 2014, for projects starting after 1 December 2014. The Scheme will help with funding productions, concerts, festivals and workshops.

Contributions can be made towards the following:

- Materials for workshops, theatre productions or for visual arts projects
- Arts residency schemes involving local artists or communities
- Promotion of arts projects, events or programmes

Projects must meet one of the following criteria:

- Broad Community Involvement – the project will create opportunities for local communities to engage with and participate in arts activities
- Diversity – the project will support the diverse arts and cultural traditions of local communities, enriching and promoting their uniqueness and cultural diversity
- Young People – the project will enable and encourage young people under the age of 18 years to engage with and actively participate in the arts.

Average allocations are \$1,000. If you're not quite ready the next funding round after this one closes on 10 March 2015.

Sport NZ Rural Travel Fund Tasman

Does your sports team have places to go and games to win?

The Sport NZ Rural Travel Fund is aimed at making it easier for young people living in rural communities to participate in team sports.

The fund can help subsidise travel costs for junior teams to enable them to take part in local sports competitions. It is targeted at young people aged between 5-19 years.

Who is eligible? The Rural Travel Fund is open to support rural sports clubs and rural school teams in the Tasman District with players aged between 5-19 years.

The closing date is 31 October 2014 with applications to be considered by the Tasman District Council Grants and Community Facilities Rate Subcommittee.

Application forms and further information can be found online at www.tasman.govt.nz/council/grants-funding or contact Mike Tasman-Jones, Ph. 03 543 8403 for further information.

What's Happening In Council Facilities

Golden Bay Museum

73 Commercial Street, Takaka

The Margaret Wilson Collection – A look at items that form part of the founding collection of the Golden Bay Museum.

Weekdays 10.00 am – 4.00 pm, Saturday 10.00 am – 1.00 pm

Motueka Museum

140 High Street, Motueka

Motueka's War – WWI commemorations

September 2014 to 1 May 2015

The exhibition tells the story of Motueka from the beginning of WWI – our men, those left behind. It goes as far as Gallipoli, then will be followed throughout the following years battle by battle

Free Admission: Donations are appreciated

Winter (April to November):

Tuesday to Friday, 10.00 am to 3.00 pm.

Sunday, 10.00 am – 2.00 pm.

Summer (December to March):

Monday to Friday, 10.00 am to 4.00 pm.

Sunday 10.00 am – 2.00 pm.

Golden Bay Community Centre

88 Commercial Street, Takaka

Mondays 8.15 am – 9.45 am: Yoga with Kerryn

Tuesdays 9.30 am – 12.00 pm: Sit and Be Fit

Tuesdays 5.30 pm – 7.30 pm: Yoga with Doris

Wednesdays 4.45 pm – 6.15 pm: Yoga with Kerryn

Wednesdays 6.30 pm – 9.30 pm: Bridge Club

Thursdays 9.00 am – 10.30 am: Yoga with Michelle

Thursdays 6.00 pm – 8.00 pm: Oneness Blessing

Fridays 12.30 pm – 4.30 pm: Bridge Club

Tuesday 30 September: Whanau Meeting (last Tuesday of the month)

Alternating Tuesdays and Fridays: Tasman Youth Council

Murchison Sport, Recreation & Cultural Centre

82 Waller Street, Murchison

Motueka Recreation Centre

40 Old Wharf Road, Motueka

Open day

Sunday 19 October 2014, 10.30 am – 2.30 pm.

Sport Tasman Backyard games

Decks Reserve Sunday 9 November 2014, 10.00 am – 1.00 pm, free.

Family Fun Ride

Estuary/Skate Park, Sunday 23 November 2014, 10.00 am – 1.00 pm, gold coin donation.

Opening Hours:

Monday – Friday, 9.00 am – 9.00 pm

Saturday, 9.00 am – 4.00 pm

Sundays, 10.30 am – 2.30 pm



join our community:
Twitter • Facebook • Website

Public Notices

Draft Tasman Regional Land Transport Plan – Summary of Information

Background

The Draft Tasman RLTP is prepared to gain funding from Central Government for undertaking work programmes proposed work in Tasman. The document contains all activities proposed by Tasman District Council and all those proposed by the Transport Agency. The activities proposed by the New Zealand Transport Agency and are not subject to consultation through any other process. Any submissions on any activities proposed by Tasman District and the Transport Agency should be made through the Draft RLTP. The document includes a joint front section prepared by the Top of the South councils (Marlborough District Council, Nelson City Council and Tasman District Council) with each council will be responsible for delivering their own programme. The Draft RLTP also includes a financial forecast of anticipated expenditure and funding sources for the activities across Tasman for the 10 financial years with a focus on the first six years which will be reviewed every three years.

The Tasman Regional Transport Committee (TRTC) is seeking your feedback on how this programme aligns with Tasman's transport objectives and the Government Policy Statement on land transport.

The Transport Agency operates the State Highways. The Plan also includes all the significant projects proposed for the Top of the South. These have been developed in discussion with the Top of the South council's and NZTA to reflect the economic needs of the region. The significant projects mainly focus on state highways as these are the key routes to connecting the different parts of the top of the south and beyond.

It must be stressed that Tasman's programme is a forecast of anticipated revenue and expenditure plus a proposal for funding support from the National Land Transport Fund (NLTF). It is not a funding commitment. Delivery of the programme is reliant on Tasman District Council and the Transport Agency securing the funds and delivering the programme.

Top of the South Significant Projects

Indicative Ranking ¹	Duration	Description	Organisation Responsible	Phase	Region
1	2015-18	SH1 Weld Pass realignment	NZTA	Design, Investigation, Planning and Construction	Marlborough
2	2015-18	Rocks Road walking and cycling project	Nelson City Council	Design and construction	Nelson
3	2015-18	SH6 (Whakatu Drive) north-bound capacity improvements and Quarantine Road intersection upgrade	NZTA	Construction	Nelson
4	2015-18	SH6 Rai Saddle Second Curve Realignment	NZTA	Planning and Construction	Nelson
5	2019-21	SH6 Aniseed Valley to Saxton Corridor Strategic Business Case	NZTA	Investigate, design and planning	Tasman/Nelson
6	2019-21	SH6 Whangamoia South realignment Stage 1 (includes Teal River bridge realignment and lower bends)	NZTA	Design and construction	Nelson
7	2019-21	SH 6 Rai Saddle Section C Curve Realignment	NZTA	Investigate, design and construction	Marlborough
8	2019-21	SH6 Whangamoia South realignment Stage 2	NZTA	Design and construction	Nelson
9	2019-21	SH6 Hope Saddle realignment	NZTA	Investigate, design, planning and construction	Tasman
10	2019-21	SH60 Motueka River bridge widening	NZTA	Investigate, design, construct	Tasman
11		Efficient freight and commuter route from Annesbrook to Haven e.g. Southern Link or existing route capacity improvements	NZTA / Nelson City Council	Business Case	Nelson/Tasman

¹ Officers intend ranking aligns to NZTA Investment and Revenue Strategy (and pending Investment Assessment Framework) and final GPS.

Tasman Regional Transport Committee

The Regional Transport Committee is formed under the rules laid out by the Land Transport Management Act 2003. Under the terms of the Act, the RTC is required every six years to develop a RLTP. The Regional Transport Committee is made up of elected members from the Council and representatives from the Transport Agency. Community representatives with expertise advise the RTC on matters such as economic development and accessibility.

Newslineupdate

Draft Tasman Regional Land Transport Plan – Summary of Information (continued)

Overview of three-year programme

A summary of the total expenditure on Tasman activities is presented in the following table. This shows a breakdown of expenditure over the next three years.

Activity Class	Total Cost 2015-18 (\$000)	2015-16 (\$000)	2016-17 (\$000)	2017-18 (\$000)
Renewal of State Highways	10,861	3,271	4,993	2,598
Operations and Maintenance of State Highways	31,848	9,933	10,272	11,643
New and Improved Infrastructure for State Highways	29,655	9,769	9,824	10,061
Minor Improvements	2,315	759	770	787
Renewal of Local roads	14,364	4,743	4,758	4,863
Operations and Maintenance of Local Roads	17,118	5,640	5,686	5,792
New and Improved Infrastructure of Local Roads	5,850	1,063	1,334	3,671
Road Safety Promotion	457	150	152	155
Transport Planning	150	56	21	73
Special Purpose Roads – Renewals	70	23	23	24
Special Purpose Roads – Operations and Maintenance	244	80	81	83

Proposed Key Projects for Tasman District Council

The TRTC is required to determine a regional priority for all activities proposed by Tasman District Council and the Transport agency. A detailed description of the prioritisation process is included in the full RLTP. These projects still need to be prioritised and this will occur when the Government Policy Statement on Land Transport has been finalised. The following table displays the projects that the TRTC and NZTA consider important for Tasman.

Key Projects for Tasman District Council	Organisation Responsible
SH60 Pah/Greenwood Street intersection	NZTA
HPMV T2 Greymouth to Nelson	NZTA
HPMV T2 Nelson to Lyttleton	NZTA
HPMV T2 Takaka to Nelson	NZTA
HPMV T2 Westport to Nelson	NZTA
SH60 Takaka Hill Resilience Study	NZTA
SH6 Weigh Facility Murchison	NZTA
Bateup Road Reconstruction	Council
Aniseed to Saxton Corridor	NZTA
George Harvey Road Connection	Council
Maisey Road widening	Council
Queen Street and Salisbury Road intersection improvements	Council
William Street and Salisbury Road intersection upgrade	Council
SH60/Whakarewa Street/Woodlands Avenue intersection upgrade	NZTA
Lower Queen Street Reconstruction	Council
Abel Tasman Drive Route Legalisation	Council
SH60/King Edward/Wharf Road intersection upgrade	NZTA
Wensley Road Improvements	Council

Public Notices

Draft Tasman Regional Land Transport Plan – Summary of Information (continued)

The Draft Tasman Regional Land Transport Plan also includes:

- An overview and introduction
- An overview of the RLTP and Government Policy Statement
- An overview of the RLTP and the Top of the South
- An overview of regional objectives, policies and performance measures

The full Draft Tasman Regional Land Transport Plan is available for viewing on Council's website at www.tasman.govt.nz/link/rltp and during normal office hours at the following Tasman District Council Office and Service Centres:

- Richmond Office, 189 Queen Street, Richmond
- Motueka Service Centre, 7 Hickmott Place, Motueka
- Takaka Service Centre, 14 Junction Street, Takaka
- Murchison Service Centre, 92 Fairfax Street, Murchison.

And libraries:

- District Library, Queen Street, Richmond
- Motueka Library, Pah Street, Motueka

- Takaka Memorial Library, Junction Street, Takaka.

Submissions to the Draft Tasman Regional Land Transport Plan must be received by 4.30 pm on Friday 14 November 2014. Please post to:

Submissions on Draft Tasman Regional Land Transport Plan 2015-2021
Tasman District Council, Private Bag 4, Richmond 7050

Or deliver to your local Tasman District Council office; or Email to info@tasman.govt.nz.

Submission forms are available on Council's website.

If submitters wish to comment on a matter that is relevant to all three Top of the South councils (Tasman District Council, Nelson City Council and Marlborough District Council), you are able to make separate submissions to each councils' Regional Transport Committee. Alternatively, please indicate if you wish for your submission to be considered by all three Regional Transport Committees.

There will be an opportunity for submissions to be heard in person on Friday 5 December 2014. Please indicate if you wish to present your submission to the Committee.

Public Notices

Summer Irrigation Water Metering begins soon

This message is for holders of water resource consents (water permits) in the Tasman District subject to water metering.

Weekly meter readings re-commence for the summer irrigation season from **Monday 27 October 2014**.

For those consent holders who know they are not using any water for the entire 2014-2015 water year, you must advise the Council of this prior to 27 October 2014 to avoid any unnecessary follow ups.

The Council will send out a "pre-summer-irrigation-season" letter to all consent holders toward the middle of October 2014:

- The letter will be sent by Email for those consent holders who send returns by Email or through the Council's website. If your Email address has changed from last season please advise the Council as soon as possible.
- The letter will be sent by post to consent holders who use prepaid return cards.

If you wish to change your return method or you have any queries surrounding water metering requirements, please contact the Council as soon as possible.

The Council staff members responsible for the water metering project are:

Jim Trembath: Ph. 03 543 8412,
Email: jim.trembath@tasman.govt.nz

Vicky Thorn: Ph. 03 543 8567,
Email: vicky.thorn@tasman.govt.nz

24 Hour Assistance – Phone your local office

Richmond 03 543 8400
Murchison 03 523 1013
Motueka 03 528 2022
Takaka 03 525 0020

Tasman Newsline is produced by HotHouse Communications for Tasman District Council and is printed by Printhouse on recycled/recyclable paper. For advertising and editorial enquiries please contact HotHouse on phone 03 545 7995 or Email newsline@hothouse.co.nz

Temporary suspension of 5 knot speed limit: Buller River.

The Nelson/Marlborough branch of Jet Boating New Zealand Inc (JBNZ) intends to hold a members' event on the weekend of 18/19 October 2014 (with a backup weekend of 25/26 October 2014). The event will be an organised tour for family groups in jet boats and will be run in the main stem of the Buller River between the Mangles confluence and the Harleys Rock Road Bridge.

For the duration of the event, the speed limits imposed by the Tasman District Navigation Safety Bylaw will be suspended for those boats taking part. This action is taken pursuant to the provisions contained in Bylaw 3.2 of the Tasman District Navigation Safety Bylaw 2005.

JBNZ shall impose conditions on those vessels taking part in the event which will include a maximum speed of 32 knots, giving way to all other river users, daylight navigation only and a minimum flow at Longford of 60 cumecs upon commencement. Other conditions imposed may be viewed by contacting the Tasman District Council's Harbourmaster at the Richmond Office.

Affordable Professional Funerals

We can provide every service and option, and leave you with memories of a lifetime of love.

03 544 4400 • www.wrfs.co.nz



**WAIMEA RICHMOND
FUNERAL SERVICES**

Newslineupdate

Road Closures

Closure of Roads to Ordinary Vehicular Traffic

In accordance with the Transport (Vehicle Road Closure) Regulations 1965, the public is advised that for the purpose of allowing the Marathon Rally Car Club Inc for the conduct of special stages of the 2014 NZ Silver Fern Rally and the Nelson Drag Racing Association to hold a Drag Race meeting the following roads will be closed to ordinary vehicles for the periods and times indicated below.

Any person objecting to the proposal should lodge notice of their objection before **Friday 31 October 2014** to the office of the Tasman District Council, 189 Queen Street, Richmond.

Proposed Roads to be closed to Ordinary Vehicles and Periods of Closure

NZ Silver Fern Rally – Sunday 9 November 2014

- Big Bush Drive from junction with State Highway 6 to forestry entrance. Elvys Road from junction with State Highway 6 continuing through the Pinchback Range forestry area via Donald Creek Road and Kereru Road, then joining with Tadmore-Glenhope Road through to the junction with State highway 6 from 11.50 am until 3.30 pm.
- Braeburn Track from Ranger HQ at Lake Rotoroa continuing onto Tutaki Road North to the junction with Mangles Valley Road from 1.00 pm until 3.30 pm.
- Matakītiki Road from the start of the tarmac at Six Mile (Fantail Lane) continuing onto Maruia Saddle Road through to the junction with State Highway 65 from 2.00 pm until 5.30 pm.

Nelson Drag Racing – Saturday 8 November 2014, 7.30 am – 5.00 pm.

- Queen Victoria Street, Motueka from King Edward Street to Green Lane.

Closure of Road to Ordinary Vehicular Traffic

In accordance with the Transport (Vehicle Road Closure) Regulations 1965, the public is advised that for the purpose of allowing the Nelson Car Club to hold a motorsport event, the following roads will be closed to ordinary vehicles for the periods and times indicated below.

Any person objecting to the proposal should lodge notice of the objection before **Friday 14 November 2014** to the office of the Tasman District Council, 189 Queen Street, Richmond.

Proposed Roads to be closed to Ordinary Vehicles and Period of Closure

Pigeon Valley Road from Sharp Road to Dovedale Road and Dovedale Road from Brandy Creek Road to Pigeon Valley Road.

Period of Closure

8.00 am to 5.00 pm, Sunday 23 November 2014.

Public Notices

Tasman View Road – Plantation Forest Harvest Update – Harakeke

Hancock Forest Management (HFM) manage the cutting rights for forestry plantations on privately owned land which adjoin Tasman View Road and Hewetsons Road in Tasman on behalf of its investment client. HFM would like to advise that 44,000 tonnes is now mature and will be harvested in accordance with market demands. In addition there is several younger age classes within the area to which harvesting is planned out to year 2027. HFM would like to take this opportunity to remind people that this forest is privately owned by a number of small land owners and therefore forested areas are not for public recreation. Also that traffic control measures will be in place to manage the hazards associated with harvesting, and that all signage and direction from crew must be adhered to ensure the safety of road users. Once harvest is complete this land will be managed in accordance with individual owners to their respective boundaries.

Council Meetings

Agendas and Minutes for Council meetings can be viewed on the Council's website at www.tasman.govt.nz

Golden Bay Community Board

Takaka, Tuesday 14 October 2014, 9.00 am. Public forum

Motueka Community Board

Motueka Office, 7 Hickmott Place, Motueka, Tuesday 14 October 2014, 4.00 pm. Public forum

Community Development Committee

Tasman Council Chambers, 189 Queen Street, Richmond, Thursday 23 October 2014, 9.30 am. Public forum

Full Council

Tasman Council Chambers, 189 Queen Street, Richmond, Thursday 30 October 2014, 9.30 am. Public forum

Commercial Subcommittee

Tasman Council Chambers, 189 Queen Street, Richmond, Friday 31 October 2014, 1.30 pm. No public forum



FLETCHER VAUTIER MOORE
LAWYERS



Richmond Office

Providing advice on
business and property
matters

265A Queen Street, Richmond Ph: (03) 543 8301

SURVEYING & RESOURCE MANAGEMENT

- Project Management
- Resource Consents & Planning
- Subdivision Design & Management
- Land Development Engineering



STAIG & SMITH^{LTD}
ENHANCING THE LAND

81 Selwyn Place, Nelson • Ph 03 548 4422 • www.staigsmith.co.nz



Join our community:
Twitter • Facebook • Website

Resource Consent Applications – River Works

The Council has received applications for resource consent as detailed below. The applications include an assessment of environmental effects. The applications and supporting information may be examined in the main office of the Tasman District Council (Richmond), the Motueka Service Centre, the Golden Bay Service Centre and the Murchison Service Centre during normal office hours; or on Council's website (www.tasman.govt.nz).

Any person may make a submission on the applications in accordance with Section 96 of the Resource Management Act 1991. The submission must be in the prescribed form (Form 13) and copies of this form are available from Council offices and are available on the Council's website. Intending submitters should use reference number RM100851.

The submission form should be addressed to the Council's Resource Consent Administration Officer and may be either: (1) hand delivered to any of the Council offices; (2) mailed to Private Bag 4, Richmond 7050; (3) faxed to the Council on 03 543 9524; or (4) Emailed to the Council (Email address: resourceconsentadmin@tasman.govt.nz). The submission form must be received by the Council no later than **4.30 pm on Monday 10 November 2014**.

10 November 2014.

A copy of your submission must be sent to the applicant as soon as reasonably practicable after serving your submission on the Council.

Applicant: Tasman District Council

Applicant's Address for Service:

Tasman District Council
C/- Engineering Department
Private Bag 4
Richmond 7050

Location of Works: District-wide (see specific details as follows)

The location of the proposed activity is all rivers and other water bodies, their margins and where applicable the coastal marine area upstream of river mouths, within the jurisdictional boundary of Tasman District, but excluding the following:

- 1 Waikoropupu Springs.
- 2 All rivers within Abel Tasman National Park.
- 3 All 24 Significant Natural Areas listed in Schedule 18.1A of the Tasman Resource Management Plan.
- 4 All waters listed in Schedule 1 (Waters to be retained in Natural State) of the Buller River Water Conservation Order 2001.
- 5 All waters listed in Schedule 1 (Waters to be retained in Natural State) of the Motueka River Water Conservation Order 2004.

River Works RM100851 – RM100857

This application seeks to replace a global river works consent held by the Council. The Council has the responsibilities of a Catchment Board under the Soil Conservation & River Control Act 1941 (SCRCA). The application seeks consent to be able to undertake works to fulfil those responsibilities. The river works activities which the Council undertakes can be divided into the following main types:

- River management: activities that take place within river channels to enhance channel stability and reduce the risk of flooding and erosion. These activities include:
 - River bank shaping, including bank battering and slump reinstatement
 - Beach raking/ripping
 - Non-extractive gravel management, including channel realignment, diversions, and gravel relocation
 - Channel/drain clearance, including vegetation clearance on river banks, beds, berms and removal of obstructions
- Erosion control: construction and maintenance or erosion protection works to protect adjoining property and infrastructure from damage. These include gabion walls, rock riprap, groynes, and various vegetative protection methods such as tree layering, and tree planting.
- Flood protection: minor improvements to, and maintenance of stopbanks to protect property from flooding and safeguard communities.
- Authorising and maintenance of coastal structures. The majority of the works occur landward of the boundary of the coastal marine area (CMA), which is generally defined as the line of mean high water springs (MHWS) except where the Tasman Resource Management Plan defines some specified CMA boundaries upstream from the river mouths. This application seeks retrospective authorisation for existing river control structures within the CMA that are currently unauthorised, and also for extending these structures if required.

Note: For the avoidance of doubt, the application does not seek any authorisation to construct new river control structures within the CMA nor does it cover any coastal protection structures, it only covers those existing structures within the CMA that are specifically designed for river management purposes.

There are ancillary activities that are common to these main areas of works such as vehicles/plant crossing flowing water, and earthworks (including vegetation removal) to construct access tracks.

This application includes relocation of gravel within beds of rivers, but it excludes gravel extraction. An application for gravel extraction will be lodged separately.

It is noted that the Council holds separate resource consents for bridge maintenance works and application of herbicides for vegetation control.

Enquire Now!



**Operating costs
between \$12 - \$15
per person/year! ***

Efficient, German Designed & Engineered Wastewater Treatment Systems

Domestic, Commercial and Industrial Packages

From 4 person/day to 1000 person/day Systems



* Based on a 10 person system running at full capacity.



Toll-free 0800 255 356

Email: wastewater@allflow.co.nz

Website: www.allflow.co.nz

Newslineupdate

ACTIVITY	CONSENT APPLICATION
Works in the Water <ul style="list-style-type: none"> To undertake river management activities on land zoned Open Space, Recreation, Conservation, Rural Industrial and Papakainga under the Tasman Resource Management Plan (TRMP). To relocate river bed material within the beds of rivers, including within active flowing channels. To disturb river bed material within the beds of rivers outside the active flowing channels of rivers. To remove non-gravel material (logs, woody debris, vegetation, sand, and silt) from the bed of rivers, including within the flowing active channel. To shape (battering and slump reinstatement) the bank of rivers. To plant trees, excluding crack and grey willow, on the beds of rivers. To place and use culverts on the beds of rivers to provide temporary crossings for vehicles and/or machinery. To construct, reconstruct, repair, maintain, extend and remove river control structures including the associated disturbance of the beds of rivers. To construct, reconstruct, repair, or maintain flood control structures, including the associated disturbance of the beds of rivers and deposition of material, where those structures are within the bed of a river. To place vegetation (layering and trenching) for erosion control purpose, including within beds of rivers. To remove vegetation, including within beds of rivers. To enter and pass across the beds of rivers, including through flowing water, by vehicles and/or machinery. (excludes the removal of gravel from the riverbed) 	RM100851
Land Use Consent <ul style="list-style-type: none"> To undertake earthworks outside the beds of rivers to create access tracks for the purposes of gaining access to waterways. To graze stopbanks by stock that is not sheep or goats. Remove vegetation. To plant woody vegetation with a mature height of greater than 0.5 metres more than 10 metres from the banks of rivers. 	RM100852
Water Permit <ul style="list-style-type: none"> To divert water into newly created channels within the bed of rivers. To temporarily divert water required for the repair, maintenance, extension, or removal of structures. 	RM100853
Discharge to Water <ul style="list-style-type: none"> To discharge contaminants into water from activities carried out in the beds of rivers (arising from the works described here). 	RM100854
Coastal Permit <ul style="list-style-type: none"> Coastal Occupation/Structure - To authorise existing unauthorised river control structures within the coastal marine area (CMA). 	RM100855
Coastal Discharge <ul style="list-style-type: none"> To discharge contaminants into water from activities carried out in the CMA (arising from the works described here). 	RM100856
Coastal Disturbance <ul style="list-style-type: none"> To extend or add to existing river control structures which are located within the coastal marine area (CMA) (but not to construct new structures). 	RM100857

This notice has been included in Newsline as the most practicable way of serving notice on landowners within the District who might be affected by the proposed activities.

Dated this 10th day of October 2014. Phil Doole, Resource Consents Manager.

IS YOUR WATER SAFE?

**Get the BEST from your water!
Take the WORST out of it!**

- Water Purification
- Filtration
- UV Sterilisers
- Giarda Filters
- Water Softening



thinkwater
TASMAN BAY
BEYOND IRRIGATION

397 HIGH STREET MOTUEKA.
PHONE: 03 528 8888

WATER TESTING SERVICE AVAILABLE.



The specialists in design, supply and installation of domestic & horticultural irrigation, drainage, effluent & septic systems, pumps, water harvesting & tanks and water treatment & filtration.

Spring cleaning with care

Spring is the time when we get inspired to do some cleaning and wash away that winter grime around our homes. It is also the time when the different species of native fish, collectively called whitebait and highly sought after by many who line riverbanks throughout the country, are 'running' up the freshwater streams from the sea.

There are a lot of products on offer promising to help us clean our homes and sections more quickly and easily. However, these cleaning products are not necessarily whitebait 'friendly' and can harm or kill fish life if allowed to reach their waterways.

Rainwater goes down our guttering and stormwater drains to the nearest creek or stream. This rain also carries run-off containing the many chemicals used for cleaning our properties.

If you are using cleaning products on your house, roof or driveway, it is important to ensure these chemicals are not going down any stormwater drains via guttering or grates on properties or nearby roads. If the product mentions 'keep out of reach of children' and 'avoid skin contact' then it is not good in our waterways. Please carefully follow the manufacturer's instructions and divert washwater, or the next rain, away from drains and out onto grassed or landscaped areas. Reducing the amount of harmful run-off is an essential part of ensuring the environment is not affected permanently and that we have whitebait and other life in creeks, streams and estuaries for the future.



A freshwater stream containing dead fish affected by cleaning chemicals.

Tasman's dog control policy updated

The Tasman District Council has a Dog Control Bylaw, and a Policy on Dogs, which allow it to control issues relating to dogs that are not specifically addressed under the national Dog Control Act. This Bylaw and Policy have been in place for a number of years and give clear guidance on where dogs can be exercised, between what times, and when they should be on leashes.

The Council was required to review both its Bylaw and Policy before 12 September 2014. In order to do this it held a workshop on 3 April 2014 and from that created and publicised a Statement of Proposal and Summary of Information. The public was invited to review the documents and make submissions prior to 7 July 2014. In total 75 submissions were received, and two hearing panels were held to listen to verbal submissions.

The outcome is that a number of amendments were made to the draft Policy and Bylaw, and both of those documents have now been adopted by the Council.

Areas that have had changes made to how and when dogs can have access to them include Takaka Township, Jimmy Lee Creek walkway, Sand Island, Tasman's Great Taste Trail, Parapara, Motueka Sandspit, Patons Rock Beach and the Awaraoa Inlet.

If you are a dog owner, and want to know more about the Council's Policy on Dogs and Dog Control Bylaw you can review copies at Council Service Centres or read the documents online at www.tasman.govt.nz



Your not-so-small local company

- Septic Tanks • Bulk Collection • Grease Traps
- Sumps • Farm Work • Drain Jetting



WasteMINZ Compliant • Quality Service • Unbeatable Value
Freephone 0800 725 326 • www.sepclean.co.nz • sales@sepclean.co.nz

Course to help residents deal with invasive ants

Argentine and Darwin's ants are continuing to spread in Richmond, Brightwater, Stoke and Nelson despite the concerted effort of many residents to control them. Local residents have been provided with information by the Tasman District Council that has drawn on the knowledge of two local experts.

Richard Toft is an entomologist who has researched methods of controlling these ants and Peter Visser is the Technical Manager for Key Industries, who has led the work undertaken by the company in providing new products for controlling these ants.

Both of these experts have seen at first-hand the impact of these ants, and have volunteered their time as presenters at a course being staged at Nayland College on Saturday 18 October 2014, 9.30 am – 12 noon.

This course is for people who wish to find out more about

how to control ants; prevent invasion; or reduce their spread throughout neighbourhoods. As a result of Peter and Richard's voluntary contribution to the course, the course fees will only be \$10 to cover administration costs. You can enrol online at www.communityeducation.nayland.school.nz/courses.asp or contact Kathryn at the Nayland College on Ph. 03 547 9769 ext 854.

Geoff Gudsell has been instrumental in setting up the course as a result of dealing with ants on his Stoke property. He believes that the course is a great way of getting information out to concerned residents. He says that the advantage of the course is that it is possible to convey a lot more information in the 2.5 hours than is possible in leaflet form. He believes that people attending the course will gain a better understanding of the ants and of how each of the control products work. This will improve the effectiveness of their efforts to manage ants on their property.

How will the proposed Waimea Community Dam be funded and governed – your chance to have a say

The Council will be issuing information to all ratepayers next week regarding the funding and governance options for the proposed Waimea Community Dam. The special consultative procedure will be asking for feedback on four options relating to the methods of paying for, owning and governing the proposed dam.

The precise cost of the dam will not be included as this is not available until tenders are received next year, assuming the decision is to go ahead. However, estimated costs will be included in the consultation material, along with indicative costs for sample property types.

The special consultation procedure will run from 13 October 2014 until 14 November 2014. During the consultation period there will be a number of information days and public meetings throughout the District at which residents are able to ask questions and further explore the options. Further information about the dam proposal will be available on the Council's website, www.tasman.govt.nz, from the 13 October 2014.

This consultation period is not asking whether the proposed dam is built or not, as the Council will be considering that question in June 2015.

Date	Times	Location	Site
Monday 20 October 2014	1.00 pm – 4.00 pm: Information 7.00 pm – 9.00 pm: Public meeting	Richmond	Council Chambers
Wednesday 22 October 2014	3.00 pm – 5.00 pm: Information 6.30 pm – 8.00 pm: Public meeting	Takaka	Takaka Fire Station
Thursday 23 October 2014	3.00 pm – 5.00 pm: Information 7.00 pm – 9.00 pm: Public meeting	Appleby	Seifried Estate
Tuesday 29 October 2014	3.00 pm – 5.00 pm: Information 7.00 pm – 9.00 pm: Public meeting	Motueka	Motueka Memorial Hall
Monday 3 November 2014	7.00 pm – 9.00 pm: Public meeting	Brightwater	Brightwater School Hall
Monday 10 November 2014	5.30 pm - 7.30 pm: Information	Murchison	Murchison Sport and Recreation Centre
Wednesday 12 November 2014	1.00 pm – 4.00 pm: Public meeting	Richmond	Council Chambers



OFFICIAL OPENING

**THE COASTAL SECTION OF
TASMAN'S GREAT TASTE TRAIL**

**SATURDAY 11 OCTOBER 2014
MOTUEKA DECKS RESERVE
FROM 9.00 AM**

OFFICIAL RIDE TO KAITERITERI LEAVES MOTUEKA AT 11.00 AM.
OFFICIAL OPENING CEREMONY AND BLESSING IN KAITERITERI AT
2.00 PM FOLLOWED BY FUN ACTIVITIES FOR THE WHOLE FAMILY.

FREE SHUTTLE BUS FOR PEOPLE AND BIKES BACK TO MOTUEKA FROM 3.00 PM



FOR MORE INFORMATION GO TO WWW.HEARTOFBIKING.ORG.NZ

