



COUNCIL FEATURES AT NATIONAL GREEN AWARDS

Tasman District Council and the Sherry River Catchment Group made the finals of the 2011 Green Ribbon Awards, which were presented on the 9 June 2011 at Parliament by the Minister for the Environment. The awards recognise the outstanding contributions of individuals, organisations, businesses and communities to protecting and enhancing New Zealand's environment.

Tasman District Council made the list of 29 finalists (short listed from 203 nominations from across New Zealand) for Ecofest, which it co-sponsors with Nelson City Council. Ecofest, the nationally recognised weekend expo of "green" products and sustainable living, has been a success since it began 11 years ago. The next event is on 20-21 August 2011.

The Sherry River Catchment Group was selected for its booklet *The Sherry River Story*, which documents the community based environmental action that the group has undertaken in the Tasman District over the past 10 years. The booklet, developed with the help of the NZ Landcare Trust, describes the challenges faced, and the actions that were taken to improve water quality across all land uses in an intensively farmed sub-catchment of the Motueka River. The booklet is now available as a resource for other communities facing similar issues around catchment management and restoration. "The group demonstrates the tremendous benefits of local communities taking ownership of their environmental problems," said the Ministry.

Rounding out the finalists from our region were the Nelson City Council, Emma Heke, who makes DVDs for children about the natural environment, and Brittany Packer, a co-founder of Green Teens, who campaigned against plastic bags in supermarkets.

Tasman District Councillor Glenys Glover and Environmental Education Officer Rob Francis represented the Council at the awards ceremony in Wellington. "The shortlisting of Ecofest for the Green Ribbon Awards is a real tribute to all the hard work and great effort over time that has been put in by staff from both Councils, and especially Ecofest Project Manager Jo Reilly," says Glenys. "I'd also like to congratulate the Sherry River Catchment Group for its nomination – it's very pleasing to see a motivated and passionate community group achieving so much and for that hard work to be recognised on a national stage."

The overall winner of the Awards was Eco Stock Supplies, which collects food waste destined for the bin from manufacturers, retailers, importers and transport companies. This waste is processed into high-quality stock feed at its plant in Wiri, South Auckland.

THIS WEEK:

04. New link in cycle trail.

02. Footprint on your car.

06. Winter driving tips.

03. Youth Volunteer Awards.

07. New big bin bags.

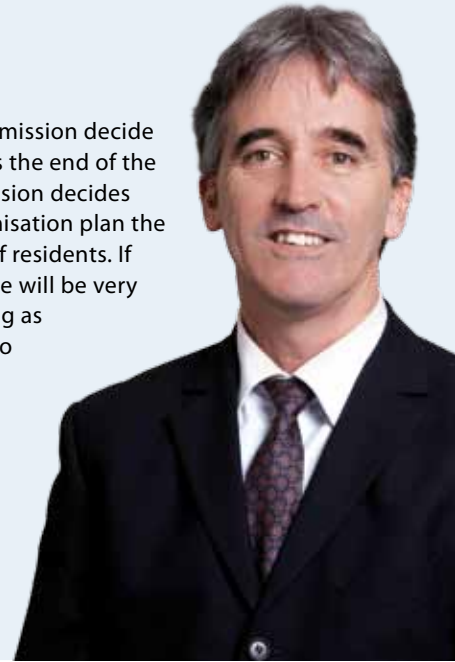
MAYOR'S COMMENT

As we continue to work our way out of the recent recession there is a need to recognise opportunities for local sustainable growth and development within the region. One of these opportunities is the employment, training and development of our own youth as businesses and other institutions look to rebuild and grow their enterprises. Sustainability within a local employment market is a key element within regional growth and while many bemoan a lack of skilled and readily employable candidates it appears there is no shortage of raw talent looking for local opportunities. I strongly support our employers who give our young people the opportunity to enter the job market.

By the time many of you read this the decision of the Local Government Commission regarding the Tasman District and Nelson City union proposal will be public. I urge all residents to look

closely at the result. If the Commission decide the proposal be stopped that is the end of the matter, however, if the Commission decides to proceed with a draft reorganisation plan the outcome will be in the hands of residents. If this is the case the Council's role will be very limited, but we will be providing as much information as possible to ensure you are able to make a fully informed contribution.

– Mayor Richard Kempthorne



GOT A FOOTPRINT ON YOUR CAR?

A distinctive foot shaped flyer is being distributed throughout Tasman and Nelson in a bid to reduce the incidence of cars parking on footpaths.

Produced by the two Councils, the flyers are available for the public to put on the windscreens of repeat offenders and spell out the dangers and consequences of parking on footpaths.

Tasman District Council Road Safety Coordinator, Krista Hobday, says it's hoped the friendly reminder will be enough to reduce the number of people parking on footpaths, which creates its own set of safety issues for many users as well as

causing damage to underground cables and infrastructure, such as water mains, which is very costly to repair.

"It's letting people know the consequences without issuing a ticket, but if the practice persists, that avenue will be taken."

The footprint flyers are available from Council offices and libraries and have been distributed to schools for parents to use when escorting children on the walking journey to and from school.



Day to day banking services

NBS understands that everyone is different and what may work for some may not for others, so we've created personal bank accounts that reflect the differing needs of people.

All of our accounts include the options of using automated banking services - Internet, ATM, Phone Banking or personal NBS counter service.



TONI LANE
BRANCH MANAGER
207 QUEEN STREET, RICHMOND
03 543 8203

NEW ZEALAND'S
OLDEST
BUILDING SOCIETY

NBS
NELSON BUILDING SOCIETY



HOWIE TIMMS
BRANCH MANAGER
185 HIGH STREET, MOTUEKA
03 528 1112

Term Investments

Home Loans

Transactional Accounts

Savings Accounts

KiwiSaver

Foreign Exchange



DECISION ON PROPOSAL FOR THE UNION OF NELSON CITY AND TASMAN DISTRICT

The Local Government Commission will be announcing its decision on whether or not to issue a draft reorganisation scheme for the union of Nelson City and Tasman District on Thursday 16 June 2011. The announcement will be made at Saxton Pavilion, Saxton Field, Stoke, 10.00 am to 10.30 am.

If the decision of the Local Government Commission is to issue a draft reorganisation scheme this will be presented to the residents of both Tasman District and Nelson City for their consideration and a further submission process before a final reorganisation scheme is created. Any final reorganisation scheme would then go to a vote by ratepayers and residents in the City and District.

If the Commission decides that there is no value in joining Tasman District and Nelson City then the process, started by Aldo Miccio's petition in July 2009, will come to an end on the 16 June 2011.

Copies of the decision will be available at the announcement. It will also be on the Commission's website, www.lgc.govt.nz, and on Tasman District Council's website, www.tasman.govt.nz, as soon as possible on the 16 June 2011.

GREAT RESPONSE FOR REGIONS YOUTH VOLUNTEER AWARDS

Sixty young people from Tasman and Nelson have been nominated for a Youth Volunteer Award for their 'good works' in the local community.

The annual awards celebrate the voluntary efforts of young people aged 12 to 25 who live in the Tasman/Nelson region and nominations include everything from helping out at breakfast in schools, sport, after-school homework programmes, Riding for the Disabled and fundraising.

The awards will be presented at an event on 23 June 2011 at the New Hub in Nelson. Ten special awards, split between Nelson City

and the Tasman District will be presented. Tomo Chisnall, a previous award winner, and Ivan Tava, Managing Director of Mova Marketing Limited, are the guest speakers.

The Youth Volunteer Awards are jointly run by Volunteer Nelson, The New Hub and the Tasman District and Nelson City Youth Councils. For more information go to www.jamonline.co.nz or contact Volunteer Nelson on Ph. 03 546 7681.



(MATTHEWS)
Eyewear. Eyecare.

Nelson
1 Buxton Square
03 548 3249

Richmond
211 Queen Street
03 544 4319

Blenheim
82 Market Street
03 578 5880

Motueka
217 High Street
03 528 8724

Silhouette
www.matthews.co.nz

ANOTHER LINK IN CYCLE CHAIN BEGINS

Construction is about to start on 2km of cycle trail from Ranzau Road in Hope along Pugh Road to Edens Road. The successful tenderer, Oldfields Group expects to complete the section of track by the end of July 2011.

Linking with the northern end of this new section of trail, Tasman District Council has also gained access to the old Railway Reserve from Ranzau Road north to SH60. This part of the trail holds a special feature for cyclists in that it will run through a working vineyard. Waimea Estates has had a lease on the land for about 30 years.

Sections of cycle path around the District are gradually linking up. Last month, Tasman Mayor Richard Kempthorne helped to open the Richmond Deviation cycleway, connecting with the Wakatu Drive path to Nelson. In December 2009, Mayor Kempthorne cut the ribbon on a shared path that starts at Lower Queen Street in Richmond and runs to Three Brothers Corner (SH60).

All this work is part of the Tasman Loop project, a 175km cycle trail that is planned to eventually go from Nelson/Richmond to Kohatu, up through Tapawera and the Motueka Valley, then back along the coast from Riwaka to Richmond. A boat will ferry



Red dotted line shows the path of the new section of cycle trail.

cyclists across from Mapua to Rabbit Island, and the southern leg is planned to include the 1.3km Spooners former rail tunnel.

The Loop is expected to boost tourism revenue for the region (the Otago Rail Trail generates \$8 million a year). The Loop also forms part of the national cycleway, Nga Haerenga, and has received \$2 million in Government funding for construction. The Nelson Tasman Cycle Trails Trust aims to raise another \$3.8 million for the project.

Waimea Estates general manager Ben Bolitho says machinery work in the area of the track

– spraying, mowing and trimming of vines – will be scheduled for off-peak times. Waimea Estates decided against fencing off the trail, so cyclists will be urged to stick to the track.

Ben believes the cycleway leg from Nelson to Brightwater will be a success with locals.

Mayor Kempthorne says the Council has come up with signage to ensure the vineyard can run normally. He appreciated Waimea's co-operation.

"It'll be a really pleasant place to cycle through, it's a very nice vineyard."



Better Value Rubbish Removal

Providing for all your rubbish needs in the Richmond area.

Blue Bags available from your local supermarket
Wheelie Bins buy or hire from Nelmac

03 546 0910

www.nelmac.co.nz



NELMAC

Taking care of your environment

NATURAL BURIALS GATHERING PACE

Three people have now been interred in the natural burial park at Motueka. Tasman District Council approved the 40-plot site – the South Island’s first such facility – in January 2010.

With natural burials, bodies are buried in shallow 1-metre-deep graves. The bodies are not embalmed so they can decompose naturally. Sites are commonly planted with trees.

Last October, Ron Resnick, retired lecturer, environmentalist and well-known letter writer to the Nelson Mail, became the first person to be buried naturally at Motueka. His body was wrapped in a woollen blanket and laid on a wooden tray with rope handles, rather than using a coffin.

Friends of Mr Resnick gathered recently to plant a kowhai tree and other natives on his grave.

Two other interments have also taken place, with natural burial advocate and celebrant Lynda Hannah present at all three.

Based on demand for such burials elsewhere, the Council had expected one every two years in Motueka.

“Three in six months – I’m happy with that,” says Lynda. She adds that “plenty of people” have indicated they want the service.



Friends of Ron Resnick plant natives on his grave.

The Council plans to set aside land for natural burials in Spring Grove and Golden Bay. Nelson people can have the burials at Wakapuaka Cemetery in Atawhai.

PARK FORESHORE USE MULLED

Separating commercial activity from more peaceful and natural sites is a key focus of the Abel Tasman Foreshore Scenic Reserve Draft Management Plan, which is now open for public comment.

The Abel Tasman Foreshore Scenic Reserve, established in January 2007, is administered by a committee consisting of the Tasman District Council Chief Executive and Department of Conservation Nelson/Marlborough Conservator. The 774ha reserve encompasses foreshore adjoining the national park, council reserves and private land between Marahau and Wainui. It also includes estuaries and foreshore around national park islands.

DOC Nelson/Marlborough Conservator Neil Clifton says that the Abel Tasman Coast Track

is the busiest multi-day track in the country, with about 150,000 visits a year. Most people get to the foreshore and park by water-taxis, kayaks or other vessels.

The draft management plan proposes to concentrate most commercial activities at six ‘coastal access points’: Anchorage, Bark Bay, Onetahuti, Totaranui, Torrent Bay and Awaroa, says Neil. The proposals have been discussed with tourism operators.

Tasman District Council Chief Executive Paul Wylie says owners of private coastal land,

iwi and other interest groups were also consulted in preparing the plan.

“Some families have owned property along the Abel Tasman coast for generations – over 100 years in some cases,” said Mr. Wylie. The draft plan takes into consideration that traditional use.

People have until Monday 8 August 2011 to make submissions on the plan.

You can access it at www.tasman.govt.nz/link/abel-tasman-plan

Support & Respect through your loss

Email: support@wrfs.co.nz
Web: www.wrfs.co.nz
Corner Salisbury &
Champion Roads, Richmond

544 4400



WAIMEA RICHMOND FUNERAL SERVICES



New Zealand
Independent
Funeral Homes
Member.



Alistair Ferguson (Dip F.S.)

STIHL®

FIELD DAY SPECIALS

NO GST on all new
power equipment only
until the end of June 2011,
so call us today.



RICHMOND EQUIPMENT

Sales • Service • Repairs

18 years of friendly
reliable service

56a Gladstone Road, Richmond
Ph. 03 544 6122 • www.richmondequipment.co.nz

STAYING SAFE IN RAIN AND ICE

Winter presents its own set of driving hazards. This may mean it takes a few minutes longer to get to your destination, but the safety of you, your family and other road-users is far more important. Bad weather is a contributing factor in about 10 fatal and 125 injury crashes every year. Here are a few tips for safer winter driving:



Stay out of trouble

- Slow down – it takes a split-second to lose control in wet or icy conditions.
- Avoid sudden movements. Accelerate smoothly and brake gently.
- Drive to the conditions. The speed limit is not safe in heavy rain or on icy roads.
- Keep back from vehicles in front because your braking power might be greatly reduced.
- If you don't have anti-skid braking, pump the brake pedal in short bursts rather than pressing long and hard.
- When travelling uphill, use a higher gear than normal. When going downhill use a lower gear.

See and be seen

- In fog, rain or snow, turn your lights on.
- Switch headlights on earlier in the day.
- Keep windows clear at all times. Use your demister or air-conditioning.
- Clear windows before driving. De-ice and wipe windows.

Winter-proof your car

- Check brakes, wiper blades, tyre pressure and tread.
- Make sure all your indicators and lights are working – “one-eyed” cars are surprisingly common.

Watch for danger spots

- Ice lingers in shaded areas such as high banks, tall trees and road cuttings.
- Bridges can stay slippery longer than other road surfaces.
- Expect a dawn frost. If it is not frosty at 6.00 am, it could be an hour later.
- Slow down in glare from low winter sun.

When things go wrong...

- In an emergency call 111.
- While waiting for help, ensure your vehicle is not a hazard, and keep everyone warm.
- You can assist other road-users by reporting road conditions. Call 0800 44 44 49.

Plan your journey

- When conditions are bad, postpone your trip if possible.
- Check road conditions (call 0800 44 44 49 for state highways, visit www.highwayinfo.govt.nz, or listen to local radio stations).
- Carry warm clothes in case you get stuck or break down. On a long trip, take food.
- Take tyre chains and know how to use them.

Safety in SUVs

- Corner with care – SUVs are more prone to body-roll.
- Always wear a seatbelt.
- Watch for vulnerable road-users such as pedestrians, cyclists and motorcyclists.
- Store heavy items behind the cargo barrier – they could become lethal missiles if you brake suddenly. Only store light items on the roof-rack.
- Increase your following distance – a heavy SUV takes longer to stop than a small car.

Providing professional legal assistance in all property matters



Krista Primmer
Law Clerk
265a Queen Street
Richmond
(opposite the Public Library)
Ph: 03 543 8301



FLETCHER VAUTIER MOORE
LAWYERS

Resource Consents

Resource Management Consultants and surveyors

Also in Mapua

Building related RC consents

Subdivision consents

Discharge consents

Boundary Adjustment

Land Survey -GPS

Power Easements

Boundary Marking

Site Plans- Contours



Simon Jones
simon@jals.co.nz



Andrew Stanger
andrew@jals.co.nz

03 548 2833

Jones & Associates Ltd

Registered Professional Surveyors
www.jals.co.nz



Every day we find at least one dog that's got lost - and make sure it gets home safely

If you've lost, or found a dog give Council's Customer Services a call on Ph. 03 543 8400, 24hrs a day, seven days a week and we'll do the rest.



Customer Services - help when you need it, 24hrs a day

NEW 'BIG' RUBBISH BAGS

Since launching its kerbside collection 45 litre rubbish bags six years ago Council has been asked by a number of customers and retailers to add a bigger 60 litre size kerbside collection rubbish bag for larger households. In response to these requests Council will be selling a 'Big' 60 litre rubbish bag alongside its 'Small' rubbish bags from 1 July 2011.

"Pre-paid rubbish bags are an excellent way to minimise waste and costs for a household, but residents have let us know they would like to have the choice of either a small or big rubbish bag, depending on their needs," said David Stephenson, Utilities Asset Engineer at Tasman District Council.

"Residents see real value in the kerbside rubbish collection scheme that Council operates and the addition of the bigger bag size will mean larger households can make the most of the service, whilst enabling them to keep their rubbish collection costs manageable. We still really encourage residents to recycle as much of their household waste as possible each week as part of their rubbish disposal. The free

collection of separated recyclables is very well supported across the District and goes a long way to keeping household rubbish costs as low as possible whilst also ensuring we minimise our impact on the environment."

The new rubbish bags will go on sale at Council from 1 July 2011. The Big bags will sell at \$8.00 per pack of four (\$2.00 each). The existing Small bags will continue to be sold at \$7.50 per pack of five (\$1.70 each). The bags will also be available from shops and supermarkets across the Tasman District - prices from these retailers may vary. The weight limit for both Big and Small rubbish bags is 12kg. Visit www.tasman.co.nz for more information on refuse collection and recycling.



HOME BUILDER OF THE YEAR. AGAIN.



Why more New Zealanders trust G.J. Gardner Homes to build their homes... year after year.

G.J. Gardner Homes is a network of individual owner-operated businesses, so you get all the advantages of dealing with local people in your community, backed by the resources, buying power and security of a large, national group.

As our customers have discovered, it's a combination that provides the best of both worlds: excellent value as well as genuine commitment and service.

It's just one of the reasons why more people have built with us over the last five years than any other builder.

NELSON

195 Queen Street, Richmond
Phone: (03) 543 9502
OPEN Mon to Fri 9am-5pm

SHOWHOMES

3 Taranaki Place, Richmond
22 Daelyn Place, Richmond
OPEN Mon to Fri 11am-4pm
Sat & Sun 1pm-4pm

0800 42 45 46
www.gjgardner.co.nz

Sign up in 2011 and go into the \$100,000 cash draw *Conditions Apply

G.J. Gardner. HOMES

GJ-HBY-657-NL0710A

HELP AVAILABLE FOR MATURE STUDENTS

Retraining or taking up study later in life can be a financial strain, particularly for parents with young families, so the Tasman District Council offers scholarships of up to \$1000 each for tertiary study. The Council acknowledges that those students who successfully undertake study or retraining go on to contribute to the economic and social wellbeing of our District.

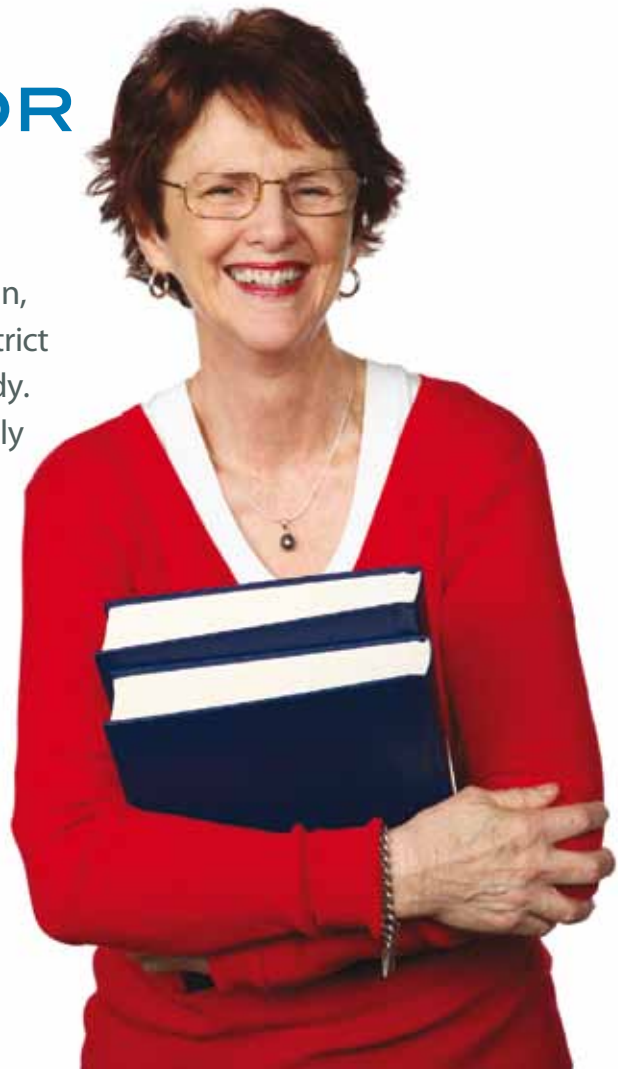
Past recipients have included nursing students, a children's book author, graphic design student and animal care trainee.

The scholarships are:

- To enable Tasman residents over the age of 25 to study or retrain, for job opportunities or to change the direction of their life.
- For those entering tertiary education for the first time.

Innovative and non-traditional areas are encouraged through the scholarships, which cover industry training, the arts, education, commerce and the state sector. Preference is given to applicants who are unlikely to gain funding from other sources. The \$1000 can be used for fees, travelling expenses or materials.

Applications close on 31 July 2011 each year for study in the following year. For more information contact Tara Cater, Executive Assistant, Tasman District Council, Ph. 03 543 8578 email tara.cater@tasman.govt.nz



ECOFEST REVIEW

Ecofest reached its tenth anniversary in 2010, which was celebrated in style at last year's event. Nelson City Council and Tasman District Council, through the annual Ecofest Expo, have spent a decade educating and inspiring the public about how to live more sustainably.

Planning is well underway for Ecofest 2011, with the main event being held on the weekend of 20-21 August 2011. In the meantime the event organisers want to know what you think about Ecofest. Fill out the easy questionnaire and go in the draw to win a \$50 voucher of your choice. It will only take a few minutes and your opinion is really valued.

To fill out the survey, go to www.surveymonkey.com/s/ECOFESTattendee

If you don't have internet access, contact Rob Francis, Tasman Environmental Education Officer, on Ph. 03 543 8484 for a paper copy.





SEPCLEAN

LIQUID WASTE

Environmentally safe waste disposal specialists



Motueka (03) 528-7349
Richmond (03) 543-8248
Fax (03) 543-8247
Email sales@sepclean.co.nz
PO Box 3389, Richmond
Freephone **0800 725 326**

Septic tanks, sumps, grease traps and other liquid waste



WRITE CHOICES

NEWS FROM THE TASMAN DISTRICT LIBRARIES

The Great Breakfast Book Quiz

After the success of last year's inaugural Breakfast Book Quiz at Motueka and Takaka Libraries, we decided to repeat the event. This year Richmond Library joined in the fun.

In all 22 schools (a total of 132 children) across the District took part. The quiz centred around a number of short-listed titles from the NZ Post Book Awards.

The winners at each library were:

Takaka

– The Gryffindors from Central Takaka School

Motueka

– The Radical Readers from Mapua School

Richmond

– The Ranzau Ripper Readers from Ranzau School

The quiz was a great mix of intense concentration and fun. All the participants entered into the spirit of the competition with some fabulously creative costumes.

NZ Music Month performances

Richmond, Motueka and Takaka Libraries all celebrated NZ Music Month with live music performances in each library.

A highlight was Golden Bay High School's girl band The Black Spots, who entertained a crowd of 60 people at Takaka Library.

The group then went on to compete in the Smokefreerockquest regional finals in Nelson.

Thanks to all the musicians who gave their time and talent to their local libraries and helped make this year's Music Month such a success.

Tasman YA book group

If you're 12-17 years old and are into the latest books, films, and music, Richmond Library's Young Adult Book Club might be what you're looking for. The next YA Book Club get-together is Thursday 23 June 2011. Bring your favourite read and an appetite for FREE afternoon tea! Meet in the YA area 3.30 pm - 4.30 pm. For further details contact Heather on Ph. 03 543 8394.

Motueka Teens, take up the challenge!

After the great success of Motueka Library's 'Blind Date with a Book' promotion earlier this year, we thought we'd see if Motueka teens would take up the challenge of reading something outside their comfort zone.

Teens can sign up at the library and agree to take home a mystery book, wrapped in plain brown paper, to read. Some parcels will contain a spot prize, so the more you read the more chances you have to win! Registered Blind-Daters will be invited to a get-together at the library on Wednesday 13 July 2011 for some superior snacks. The Teen Blind Date with a Book promotion is available to high school-age teens. You can register at the library from 15 June until 6 July 2011.

One-year anniversary for the "new" Richmond Library

It'll soon be a year since the reopening of the refurbished library in Richmond.

Since the grand opening last year we've experienced dramatic increases in visitor numbers, items issued and new member registrations, and have received many positive comments about the library from residents and visitors alike. We're delighted that the library has become such a vibrant place, well used by our community.

We think our first year is worth celebrating and we're planning to mark the anniversary during the first week of July.

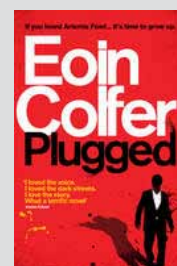
Keep an eye out for further news on what'll be happening during that week.

New to the Library

Plugged

by Eion Colfer

Best-known for his popular Artemis Fowl novels for younger readers, Plugged is Eion Colfer's first foray into adult fiction. Set in New Jersey, this is a crime novel centring around murder, kidnapping and corrupt cops.



IS YOUR WATER SAFE?

Get the BEST from your water!
Take the WORST out of it!

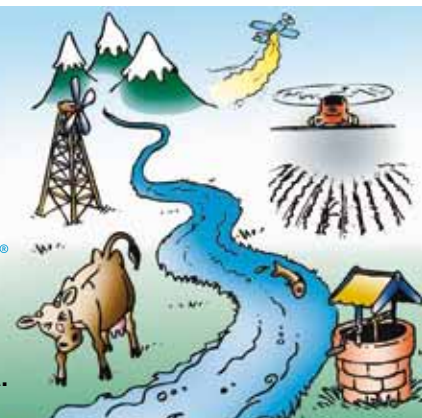
- Water Purification
- Filtration
- UV Sterilisers
- Giarda Filters
- Water Softening

WATER TESTING SERVICE
AVAILABLE.



thinkwater.
TASMAN BAY
BEYOND IRRIGATION

397 HIGH STREET MOTUEKA.
PHONE: 03 528 8888



The specialists in design, supply and installation of domestic & horticultural irrigation, drainage, effluent & septic systems, pumps, water harvesting & tanks and water treatment & filtration.

NEWS UPDATE

PUBLIC NOTICES

Dog registration expires 30 June 2011

Dog registrations will expire on 30 June 2011 and anyone who keeps a dog aged three months or older is required to register their dog by 31 July 2011.

Registration forms for all dogs currently on Council's database were posted at the end of May 2011. If you have moved from another area, or have changed address within the Tasman area, and did not receive a registration form, please immediately contact the Council office on Ph. 03 543 8400 to update your details so that a form can be sent to you.

The fee for dogs that have not been registered by 1 August 2011 will increase by 50% on top of the standard urban or rural registration fee.

The Registration Fee structure for 2011/2012:

Urban Dog for a dog living on a property of less than one hectare	\$50.00
Urban Dog – Late fee (paid after 31 July 2011)	\$75.00
Rural Dog for a dog living on a property that is one hectare or more	\$30.00
Rural Dog – Late fee (paid after 31 July 2011)	\$45.00
Replacement tag or disk where current one has been lost or damaged	\$5.00

Impounding Fees for 2011/2012:

1st Impounding	\$70.00
Neutered Dog	\$35.00
2nd Impounding	\$90.00
Neutered Dog	\$50.00
3rd and subsequent Impoundings	\$110.00
Neutered Dog	\$65.00
Sustenance – charged per day	\$13.50
Drop off fee where dog is not impounded	\$30.00
Microchipping impounded dogs if required	\$25.00

Upon application to Council a \$30.00 refund applies to a dog that is de-sexed during the registration year following its impounding.

Kennel Licence:	Initial application	\$100.00
	Annual Renewal	\$40.00
(plus any additional costs associated with staff time, hearings and inspections)		

If you have any queries, please call Tasman District Council Dog Control on Ph. 03 543 8407.

COMMUNITY NOTICES

Matariki Events 2011 – Māori New Year events in and around the Waimea Inlet

18 June

Matariki Celebration – Family Fun day:

ASB Aquatic Centre, Richmond. 11.00 am – 3.00 pm.

19 June

A Day in the Life of the Waimea Inlet

– Photography Competition:

Waimea Inlet. All Day.

25 June

Tasman District Council Public Planting Bee:

Sandeman Reserve, Richmond, Waimea Inlet. 10.00 am – 1.00 pm.

26 June

“Early Māori Life on the Inlet” – Family Interactive Day:

Grossi Point, Mapua. 10.00 am – 4.00 pm.

June

Waimea College “Waimea Inlet Displays”:

Richmond Library. All June.

For more information about the listed events contact Rob Francis, Ph. 03 543 8484, email rob.francis@tasman.govt.nz or visit the Council website www.tasman.govt.nz/link/matariki

24 Hour Assistance – Phone your local office

Richmond Office	03 543 8400
Murchison Service Centre	03 523 1013
Motueka Service Centre	03 528 2022
Takaka Service Centre	03 525 0020

Tasman Newsline The Mag is produced by Dry Crust Communications for Tasman District Council and is printed by Printhouse on recycled/recyclable paper. For advertising and editorial enquiries please contact Dry Crust on phone 03 544 4975 or fax 03 544 4951.

If only we had called printhouse we wouldn't be in this mess

5000 Rack cards for \$550 +GST

Insulation has never been more affordable!

Save up to \$1,300 off the cost of insulation and pay the balance off over 9 years with AbsoluteEnergy your local Tasman District Council contracted partner. *(Conditions apply)*

Call us for a free assessment and quote for your home and... you could be living comfortably.

Free Call: 0800 423 454
Ph: 03 547 2503
146 Pascoe St, Nelson
www.absoluteenergy.co.nz

ABSOLUTE Energy
 INSULATION SOLUTIONS FOR HEALTHIER LIVING
INSULATION PROFESSIONALS

NEWSUPDATE

COMMUNITY NOTICES

Nelson Tasman Cycle Trail Trust Community meetings

The Nelson Tasman Cycle Trails trust is holding a series of community / commercial meetings which will focus on trail "local ownership", micro economic development, funding, marketing & promotion opportunities. It's about businesses and community planning how best to benefit from the expected cycle tourism influx..

Meetings scheduled are:

9 June 2011: Tapawera Community Centre, 7.30 pm

14 June 2011: Motueka Top 10 Holiday Park, 6.00 pm

21 June 2011: Brightwater Sprig and Fern, 54 Ellis Street Brightwater, 6.00 pm

23 June 2011: Moutere Inn, 7.30 pm

28 June 2011: Mapua Wharf Side Restaurant and Bar, Shed One, 6.00 pm.

30 June 2011: Sport Tasman. 142 Saxton Road East Stoke, 5.30 pm

17 August 2011: Ngatimoti Hall, 7.30 pm

Outstanding Community Service Awards 2011

Tasman District Council's Community Service Awards are a way of giving some well-deserved recognition to those unsung heroes of our communities. It gives us an opportunity to make sure they are rewarded with the thanks they deserve for the long-term outstanding service they have given.

In May each year Tasman District Council calls for nominations from the public for the community awards. Nominees must be residents of Tasman District to qualify. Nomination forms are available from all Tasman District Council offices and libraries and give an outline of the type of information you need to include. You can also download the forms, and find further information, at www.tasman.govt.nz/link/ocs-awards

Nominations close on 30 June 2011. For more information contact Tara Cater, Ph. 03 543 8578.

www.tasman.govt.nz
all you need to know

COUNCIL MEETINGS

Agendas and Minutes for Council Meetings can be viewed on Council's website at www.tasman.govt.nz

Engineering Services Committee

Tasman Council Chambers, 189 Queen Street, Richmond, Thursday 23 June 2011, 9.30 am. *Public forum*

Full Council

Tasman Council Chambers, 189 Queen Street, Richmond, Thursday 30 June 2011, 10.15 am. *Public forum*

Corporate Services Committee

Tasman Council Chambers, 189 Queen Street, Richmond, Thursday 7 July 2011, 9.30 am. *Public forum*

Environment and Planning Subcommittee (Wyllie)

Fire Brigade Hall, Motupipi Street, Takaka, Monday 11 July 2011, 10.00 am. *No public forum*

Golden Bay Community Board

Golden Bay Office, 78 Commercial Street, Takaka, Tuesday 12 July 2011, 9.00 am. *Public forum*

Motueka Community Board

Motueka Office, 7 Hickmott Drive, Motueka, Tuesday 12 July 2011, 4.00 pm. *Public forum*

Environment and Planning Committee

Tasman Council Chambers, 189 Queen Street, Richmond, Thursday 14 July 2011, 9.30 am. *Public forum 1.15 pm*



Allflow
WASTEWATER

High Quality, Efficient, German Designed & Engineered Wastewater Treatment Systems

Domestic, Commercial and Industrial Packages
From 4 person/day to 1000 person/day Systems

Enquire Now!

58 Gladstone Rd, Richmond. Ph: 03 5439057, Freephone: 0800 ALLFLOW, Email: wastewater@allflow.co.nz, Web: www.allflow.co.nz

MAINTAINING FARM PRODUCTIVITY

Three leading New Zealand specialists will visit Tasman-Nelson soon to explain climate change and its impacts on our health, properties, infrastructure, environment and rural industries. Climate scientist Dr Jim Salinger, Lincoln University Professor Caroline Saunders and business journalist Rod Oram will address meetings in July in Richmond and Nelson on "Maintaining farm productivity and profits in an uncertain climate".

Dr Jim Salinger will outline the latest information on climate change science and its impacts on farming and communities.

Professor Caroline Saunders will speak on what all this means for agricultural trade, greenhouse gas emissions and the business opportunities in a changing world.

Rod Oram will talk on emissions trading and compare New Zealand's climate change targets with our trading partners' targets, and what this means for agricultural trade.

Dr Salinger is an internationally renowned climate change scientist, now at the University of Auckland and the University of Tasmania,

who formerly worked at NIWA. He was a lead author for the Intergovernmental Panel on Climate Change, which won a Nobel Peace Prize in 2007.

Professor Caroline Saunders has 20 years' research expertise in Britain and New Zealand. Her current research includes evaluating trade and the environment.

Rod Oram is an award-winning financial and business journalist and Radio New Zealand National/Sunday Star Times commentator.

Dates will be communicated in Newsline and on www.tasman.govt.nz once confirmed.

LEARN A SKILL OVER WINTER

The ancient paper craft of quilling rubs shoulders with modern digital photography in a wide range of courses in Motueka's Winter Workshops for 2011.

You can also learn to put on a flash Italian meal, or how to nut out cryptic crosswords in the Motueka Arts Council programme, run with financial assistance from the Tasman District Council.

A total of 21 workshops include Woodcuts, Picture Framing, Terracotta Garden Art, Singing for Pleasure, Orienteering (in downtown Motueka), Percussion Discussion (Latin, jazz and funk rhythms on bongos, congas etc), Oamaru Stone Carving, and Soap-making (a skill every family once possessed).

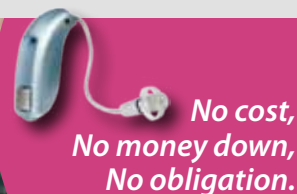
The courses are very affordable, with fees starting at \$10. The top fee is \$120, but that covers a weekend's accommodation and meals at Teapot Valley to study digital photography in-depth. (Beginner courses are also available.)

The programme is rounded out by: Screenprinting and Fabric Design, Machine Mania (sewing), Drawing, Felt Bags, Patchwork Bags, Felted Flowers and Scarves, Writing Family/Town History, and Making Photo Gift Books.

Most courses are based in Motueka and use the skills of local artisans. Enrolments are open now. Forms are available from Tasman District Council libraries, Westrupp Jewellers and the Hospice Shop in Motueka, or by contacting Jane Wells on Ph. 03 528 9967.



FREE HEARING CHECK + FREE 7 day Agil hearing aid Trial.



*No cost,
No money down,
No obligation.*

**TRY AGIL
RISK FREE!**
Save up to \$2000
on hearing aids.

With Agil you reconnect with your family, friends and yourself.

**Contact us for
more details**

Ph 0800 433 788 or 03 543 3788
Washbourn Medical Centre, 12 Oxford Street, Richmond.



*also visiting
Motueka*