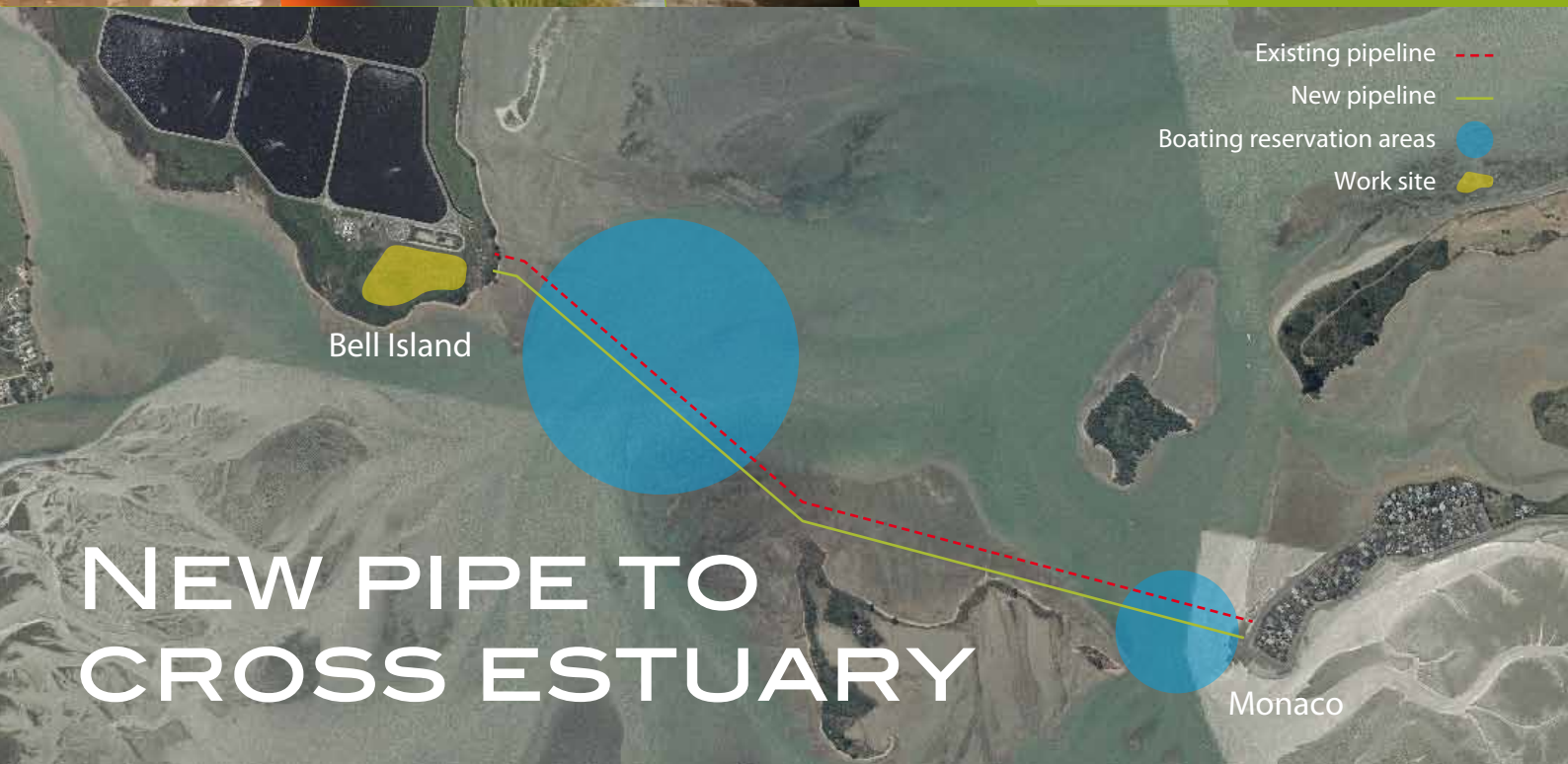


# TASMAN newsline THE MAG



## NEW PIPE TO CROSS ESTUARY

A 2.5km-long pipe is snaking its way across the Waimea Estuary to increase sewerage capacity for the growing region, and safeguard the waterway. The pipe connects Monaco with the sewage treatment plant on Bell Island.

The \$4.5 million pipeline involves digging a trench in the estuary mud. The 80cm-diameter pipe, with concrete weights, is floated out in long sections, filled with water and sunk into place. The pipe-laying should be completed by August 2011, with the overall project, including pump station upgrades, finished by October 2011 at a cost of \$11 million.

Donna Hiser, chairwoman of the Nelson Regional Sewerage Business Unit, which is co-owned by the Tasman District Council and Nelson City Council, said that joints in the current pipeline were at high risk of failure, placing the estuary at risk.

The new plastic pipe is transported to the site in 12-meter lengths, which are then heat-welded together. To minimise seabed disturbance, silt screens are in place as diggers on barges excavate

the trench. Engineers point out that a normal sea breeze creates as much sedimentation as the earthworks will, and plant life will be re-established. Work has been timed to avoid the migration of bar-tailed godwits from Siberia, and an ornithologist is on-site to monitor bird activity.

Parts of the estuary are restricted to boating during construction. Boaties are also advised to keep a lookout for sheet piling, barges and semi-submerged piles. On land, pump upgrades will cause detours on the bike/walk tracks near Songer Street in Stoke.

The pipeline work is being done by Downer.

Bell Island treats domestic sewage from south Nelson, Richmond to Wakefield, plus Mapua and the Waimea Basin. It also treats industrial wastewater from Nelson Pine Industries.

### THIS WEEK:

04. Pest of the month

02. Fire main progressing

06. Community Conversations

03. Warm Tasman

08. Friendly town

# MAYOR'S COMMENT

By now you will have received the Newsline Special edition which is the summary of the Annual Plan for 2011-2012. If you haven't please call us and we will send one out to you. The first thing many will notice is the proposed rise in the current rates for the coming year. While many will accept that we have to rebuild the Council's disaster recovery fund and have the added bogey of inflation, there is still an increase in these difficult economic times.

We have made some significant cuts throughout the plan, but we have not delayed essential and necessary infrastructure nor deferred loan repayments. We, as a Council, believe that doing such things only increases the burden later as those works become imperative and the cost falls on future ratepayers, often the same ratepayers as today.

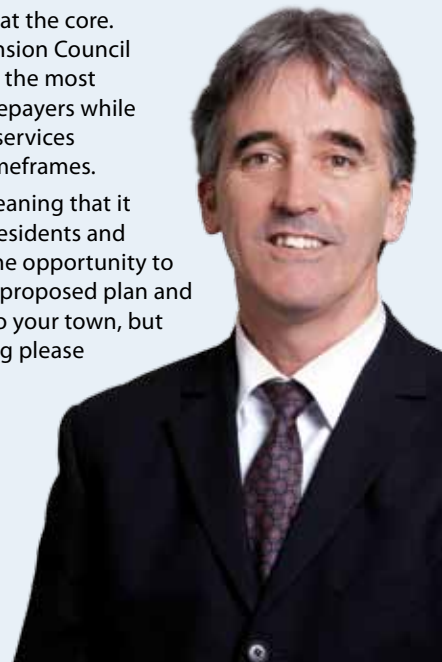
Our Annual Planning process is about continuing the planned essential infrastructure development throughout the District, one of the largest in the country, identified in the Long Term Plan. When making these decisions we carefully weigh up the options of affordability now and in the future and often the 'steady as we go' principle wins out.

As a provider of services to the District we have a responsibility to ensure we can do this efficiently. In making the decision at the

last Annual Plan to include additions to the current Council buildings, efficiency was at the core. Before proceeding with the extension Council is reviewing all options to ensure the most cost effective expenditure for ratepayers while providing for our staff to deliver services ratepayers need in acceptable timeframes.

The Annual Plan is a proposal, meaning that it does not become final until the residents and ratepayers of Tasman have had the opportunity to submit. I urge you to look at the proposed plan and engage with us when we come to your town, but if you cannot make it to a meeting please take the time to let us know your thoughts.

– Mayor Richard Kempthorne



## FIRE MAIN PROGRESSING

Construction of Takaka's firefighting pipe network is progressing well, with Ching Contracting continuing work along Commercial Street to near the Wholemeal Cafe.

Parking will continue to be restricted around the work area on both sides of Commercial Street and through traffic will be restricted at times to a single lane controlled by Stop/Go personnel.

Work in Reilly and Junction Streets will start once the Commercial Street water pipes have been laid, and work in Buxton Lane is now programmed to begin towards the end of March 2011.

The project was timed to avoid the peak summer season following consultation with local business owners and residents.



## HOME BUILDER OF THE YEAR. AGAIN.



### Why more New Zealanders trust G.J. Gardner Homes to build their homes... year after year.

G.J. Gardner Homes is a network of individual owner-operated businesses, so you get all the advantages of dealing with local people in your community, backed by the resources, buying power and security of a large, national group.

As our customers have discovered, it's a combination that provides the best of both worlds: excellent value as well as genuine commitment and service.

It's just one of the reasons why more people have built with us over the last five years than any other builder.

#### NELSON

195 Queen Street, Richmond  
Phone: (03) 543 9502  
OPEN Mon to Fri 9am-5pm

#### SHOWHOMES

3 Taranaki Place, Richmond  
22 Daelyn Place, Richmond

OPEN Mon to Fri 11am-4pm  
Sat & Sun 1pm-4pm

0800 42 45 46  
www.gjgardner.co.nz

Sign up in 2011 and go into the \$100,000 cash draw \*Conditions Apply

G.J. Gardner. HOMES

GJ-HB-657-NL070A





# HELPING HAND TOWARDS A WARMER, DRIER AND HEALTHIER HOME

Tasman District Council has a scheme that enables Tasman's residents to cover the costs of insulating their homes through their rates bill.

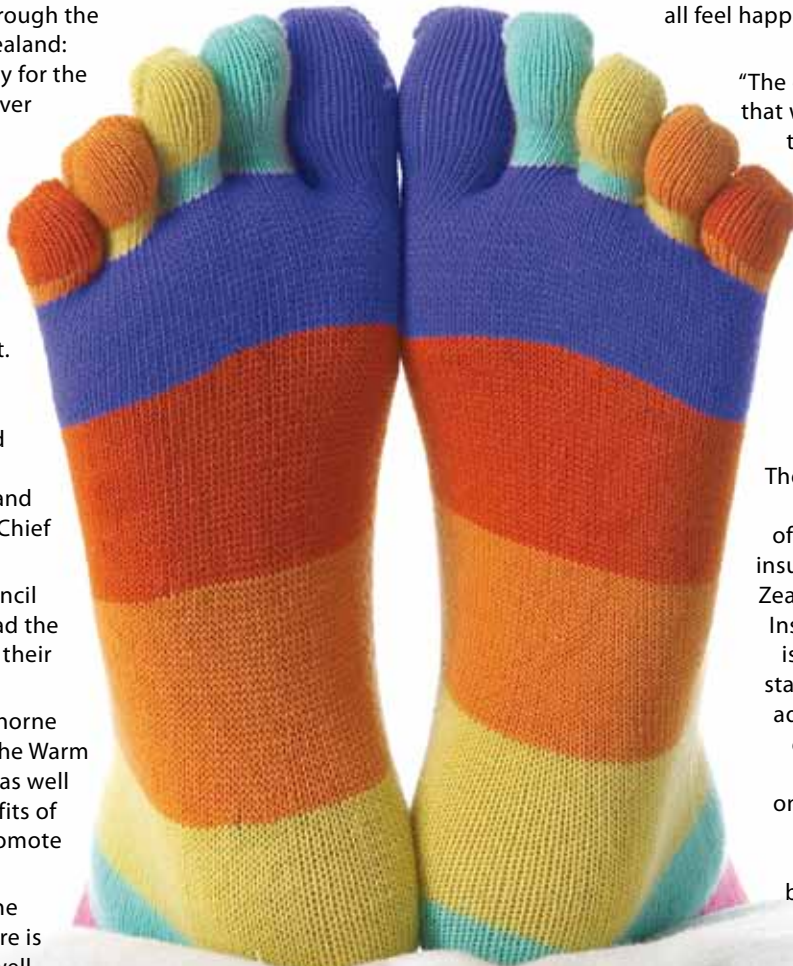
Residents can access a grant through the Government's Warm Up New Zealand: Heat Smart programme, and pay for the difference through their rates over time at a low rate of interest.

"Our research shows that many people understand the benefits of insulation. They can see that it will make their homes warmer, drier and cheaper to heat properly, and consequently they want to do it. But even with the government covering a third of the cost, insulation still costs money, and these are tight times for many people," said Energy Efficiency and Conservation Authority (EECA) Chief Executive, Mike Underhill.

"I want to congratulate the Council on its foresight in helping to lead the way in providing this service to their ratepayers," concluded Mike.

Tasman's Mayor Richard Kempthorne has been involved in bringing the Warm Tasman project to fruition and, as well as the financial and social benefits of warm homes, is also keen to promote the environmental benefits.

"When it comes to improving the environment that we live in there is no better place to start than a well insulated home with clean heating. There are well documented social and health benefits to living in a warm dry home, and we



all feel happier when we receive a reduced electricity bill.

"The greatest benefit though is one that we can't easily see - and that is the improvement in air quality. Richmond, and various other densely populated areas around our District, have air quality issues and by helping homeowners switch from woodburners to clean heat, such as heatpumps, we will see a continued improvement in the quality of the air that we all breathe."

The Government's Warm Up New Zealand: Heat Smart scheme offers grants towards the cost of insulation and heating for all New Zealand homes built before 2000. Insulation installed prior to 2000 is not likely to meet the current standards for good insulation. In addition, insulation deteriorates over time and its effectiveness will decrease. A free check by one of the Warm Tasman service providers, whose details can be found at the web address below, will let you know if your insulation is up to scratch and what the benefits of adequate insulation will be.

Further information on the scheme can be found at [www.tasman.govt.nz/link/warmhome](http://www.tasman.govt.nz/link/warmhome).

**( MATTHEWS )**  
Eyewear. Eyecare.

**Nelson**  
1 Buxton Square  
03 548 3249

**Richmond**  
211 Queen Street  
03 544 4319

**Blenheim**  
82 Market Street  
03 578 5880

**Motueka**  
217 High Street  
03 528 8724

[www.matthews.co.nz](http://www.matthews.co.nz)

Love what you look through.





## OLD MAN'S BEARD (CLEMATIS VITALBA)

### One of New Zealand's worst smothering pests

Old Man's Beard was originally brought to New Zealand as a garden vine grown for its profuse, small white flowers and was sold in Nelson as early as 1864. It has subsequently escaped into our natural environment. This creeping vine can grow up to 10 metres per year and forms thick tangled masses, smothering other vegetation. It can cause significant damage in our natural areas, smothering native trees and shrubs and preventing the germination of desirable species. It will tolerate a wide range of environmental conditions and soil types.

It is a prolific seeder, producing up to 10,000 seeds per square metre. The seeds are dispersed mostly by wind and by water. People can unwittingly transport seed on machinery, goods or clothing etc. Old Man's Beard is banned from sale and propagation.

Late summer is the best time to detect Old Man's Beard as it stands out in canopies with its white flowers and hairy seeds. Autumn is also a good time as the vine is deciduous and the leaves become yellow.

The Tasman-Nelson Regional Pest Management Strategy requires occupiers in Golden Bay through to Kaiteriteri and in the Upper Buller Catchment, to control all adult and juvenile Old Man's Beard vines on land they occupy. Please tell Council if you know of infestations in these areas, so we can follow up with the occupier. If you live outside of these areas and you have a few plants in your garden/plot, then it is worth controlling it before it is well established.

One method of killing Old Man's Beard is to cut the vine at the base and apply a herbicide (such as Vigilant) before the cut surface has time to dry. Cuttings should not be left on moist ground as they can re-establish by rooting from the stem nodes. Another method is to spray low-growing plants, but care must be taken to avoid drift onto non-target species. For further information on control methods and herbicide types, please phone a Biosecurity Officer on Ph. 03 543 8400.

## Earwax **A common cause of deafness**

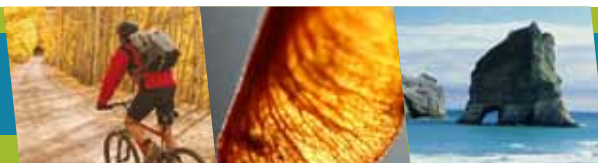
Hardened earwax can become embedded in the ear, causing pain, balance problems, increased tinnitus and can interfere with hearing.

We use the latest in suction technology which is a clean, quick and safe procedure, reducing typical side effects like vertigo, nausea and tympanic membrane damage.

**\$10 Discount** **VALID UNTIL 15 APRIL 2011**  
On suction wax removal with this coupon.



**Hearing Plus Ltd**  
Washbourn Medical Centre  
12 Oxford St, Richmond  
**PH: 0800 433 788**  
Ph: (03) 543 3788





# STOPPING DISTANCE DEMONSTRATIONS CLOSE ROADS

Do you know how long it takes to stop the car you are driving at different speeds? What is a safe distance to leave between yourself and the vehicle in front?

Between the 23 May and the 26 May 2011 Tasman District Council is proposing to carry out stopping distance demonstrations at various locations across the District. The following roads will be closed to ordinary vehicular traffic for the periods and times indicated below

**Proposed Roads and Periods of Closure:**

- 23 May 2011, 9.00 am – 11.00 am – Murchison – Fairfax Street (from State Highway 6 to the Police Station)
- 23 May 2011 – 1.20 pm – 3.00 pm – Tapawera – Matai Crescent
- 24 May 2011 – 9.15 am – 2.00 pm – Takaka – Wadsworth Street

- 25 May 2011 – 9.05 am – 11.00 am – Motueka – Grey Street (between Pah and Whakarewa Streets)
- 25 May 2011 – 1.20 pm – 3.00 pm – Mapua – Iwa Street (from numbers 43&50 to 85&80)
- 26 May 2011 – 9.00 am – 10.45 am – Wakefield – Pitfure Road (from Edward Street to number 55)
- 26 May 2011 – 12.00 noon – 12.30 pm and 1.20 pm – 2.35 pm – Richmond – Church Street

**Please note:**

- Vehicles will be allowed into and out of the area under controlled conditions at certain times.

- No roadside parking will be allowed during the road closure.
- Emergency services will be notified and allowed access.
- If you need to exit your driveway during the closure period please seek assistance from a steward (who will be a hi-vis vest) before exiting. This is for your own safety.

Any person objecting to the road closures is asked to lodge notice of the objection before Friday 13 May 2011 to: Tasman District Council, 189 Queen Street, Richmond.

printed by...  
**printhouse**

Phone 03-543 9480 • Email sales@printhouse.co.nz  
www.printhouse.co.nz

**Warm your home**

**INSULATION PROFESSIONALS**

**Insulation has never been more affordable!**

Save up to \$1,300 off the cost of insulation and pay the balance off over 9 years with AbsoluteEnergy your local Tasman District Council contracted partner. *(Conditions apply)*

**Call us for a free assessment and quote for your home and... you could be living comfortably.**

Free Call: 0800 423 454  
Ph: 03 547 2503  
146 Pascoe St, Nelson  
www.absoluteenergy.co.nz





# Community Conversations

## Golden Bay Community Board

### 'No' to water scheme

Takaka residents have given a firm "No" to the Council applying for a Government subsidy to support piped water for the town, says Golden Bay Community Board chair Carolyn McLellan.

"We believe that once and for all this will put to bed the idea that Takaka wants reticulated water."

The Golden Bay Community Board, on behalf of Tasman District Council, wrote to residents to gauge views before the Council applied for scheme subsidies that are available from the Government. A letter was sent to every ratepayer in Takaka.

At present the town is on backyard bores, some of which are shallow and may be vulnerable to contamination in a flood.

58% of landowners replied to the board letter, with 92% indicating they did not support Council applying for a subsidy.

### Old library site

"Water is big theme" in submissions on developing the old library site in Takaka, says Carolyn. The building burnt down a year ago.

Takaka has the best water in New Zealand, so the theme is not surprising, she says. Possible applications include a water feature, drinking fountains and water incorporated in play equipment in the adjacent playground. Council playground expert Glenn Thorn is investigating playground options.

### Wastewater treatment

Two members of the public will join the wastewater treatment plant working group. Carolyn says questions confronting the group include whether the present location in Takaka is appropriate, the treatment process itself, and screening for the site.

The group will look at all options, including composting toilets, she says.

"We want everyone to know that no stone has been left unturned."

The working group will report to Council's Engineering Committee on 23 June 2011.

### Freedom camping

Toilet paper hanging on bushes at the old carpark at Collingwood beach shocked Carolyn on a visit to see the effects of freedom camping. At the new carpark near the boat-ramp people have been seen squatting in gardens, she says.

Camping in out-of-the-way spots used to be a Kiwi tradition, but "many people have spoilt that for everybody now," says Carolyn. Even when toilets are nearby some people are defecating in the bushes.

The Community Board will make a submission on a draft Council bylaw, which Carolyn described as "a good starting point". To make a submission regarding freedom camping go to [www.tasman.govt.nz/freedom-camping](http://www.tasman.govt.nz/freedom-camping).

### New Years complaint

A complaint about partygoers at the Pohara campground on New Years Eve has prompted efforts to improve police coverage.

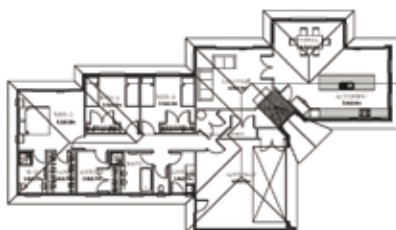
The camp regular wrote to the board and police about drunken teenagers who were "a menace to both themselves and fellow campers".

Carolyn says the award-winning campground prides itself on being a great family place, and this incident is more about police resources being stretched on New Years. If someone is arrested, for instance, it can tie up a police officer for the entire night.

Options may include transferring prisoners to Motueka.

Camp management and police are meeting to address the complaint.

## HOME & LAND PACKAGE



**\$468,500 Complete** • 4 Wilkie St, Motueka

It's easy - a beautiful new home set in this sought-after location ready to move into with everything taken care of and at a fixed price.

  
**MIKE McLEAN**  
HOMES LTD

BUILDING HOMES IN TASMAN FOR 30 YEARS

Call mike now Ph. 03 528 8392  
[www.mmhomes.co.nz](http://www.mmhomes.co.nz)

### Funding available

The board is happy to endorse applications for Community Development Funds for projects that will benefit the Bay, says Carolyn. Tasman has been tagged as a priority in 2011 for the Internal Affairs Department funding, she says. Typical beneficiaries could include the Way2Go activities programme and the Golden Bay Work Centre Trust.

## ■ Marahau Sandy Bay Ratepayers and Residents Association

The Association held its February meeting at the Firestation Hall. Items included:

- Tasman District Council is to be contacted about the sand buildup at the boat launch ramp.
- The sandspit carpark area has now been vested to Council.
- A letter will be drafted to Wakatu Incorporation to see if they have any area at the beachfront suitable for a playground.
- Council will be asked about clearing the flood debris under the bridge, and the possibility of placing a culvert under the main road at the bridge where it floods badly to divert excess rainwater from the low-lying area.
- The painting of the hall is being planned. Paint will be provided by Council, with Community Service workers available to help with the task. The association will buy Quickcrete and timber for the job.

## ■ Motueka Community Board

### Scooter ramps sought

The Motueka Community Board has asked the Engineering Services Department of the Tasman District Council to construct at least six mobile scooter ramps per year in the town.

The ramps are an easier gradient than the usual "pram" ramps in the kerb at intersections, says board chair David Ogilvie.

The modifications cost \$1500-\$2000 each, and he says that ideally the board would like to see a half-dozen installed annual for the next three to four years.

Mobile scooter use is increasing, says David, and Motueka has a high number of retirees.

(In Motueka East 23.5% of residents are aged 65+, compared with a Tasman average of 13.6%. In Motueka West 14.9% are retirees, according to the 2006 census.)

The board is also campaigning for more cycle lanes, especially around Parklands, Motueka South and the high school.

"The streets are wide enough to do it," says David, and more people are cycling for fitness or because of high petrol prices.

### Motueka River access

Resident Ross Maley wrote to the board about public access to the Motueka River. Ross compared the "park-like management" of the Lee and Waimea River banks with the limited access to the Motueka, says David. From its mouth to the Ngatimoti Bridge there were just six to 10 public access points, primarily for anglers. Most of the banks are owned by farmers.

Ross was seeking to publicise those accessways. His enquiry was referred to the community services manager, Lloyd Kennedy, and river assets manager, Philip Drummond, for comment and advice.

### State highway talks

The board will meet New Zealand Transport Agency officials at the end of March. David welcomed the agency's decision to have two meetings a year with both the Motueka and Golden Bay community boards. The discussion would be a chance to "get some direction" from the state highway officials, particularly about High Street's traffic woes, he says.

A public survey before Christmas identified traffic lights at the High-Greenwood-Pah Street intersection as the No. 1 need, says David.

### Photo contest funding

The SeniorNet Digital Interest Group has received \$500 from the board's discretionary fund for its annual photo competition.

The popular event is usually held in conjunction with Motueka's winter Festival of Lights, which will be shortened this year from the usual fortnight to three days at the end of June, says David. For more information see page 12.



**IS YOUR WATER SAFE?**  
**Get the BEST from your water!**  
**Take the WORST out of it!**

- Water Purification
- Filtration
- UV Sterilisers
- Giarda Filters
- Water Softening

**WATER TESTING SERVICE AVAILABLE.**

**thinkwater.**  
**TASMAN BAY**  
BEYOND IRRIGATION

**397 HIGH STREET MOTUEKA.**  
**PHONE: 03 528 8888**

The specialists in design, supply and installation of domestic & horticultural irrigation, drainage, effluent & septic systems, pumps, water harvesting & tanks and water treatment & filtration.



## PROFILE: JENNY EASTON RESOURCE SCIENTIST

### What is your main role?

Managing potentially contaminated sites in the District, and some of the hazardous wastes.

### What are the common challenges you encounter?

The worst chemicals are the old historic ones and we don't know where they are now. Also, we are trying to get all the old redundant agrichemicals collected from farms before they lose their labels and get mixed up.

### Are there any misconceptions getting in the way?

Nothing major, and I am impressed with how much more aware the

public are about the dangers from using chemicals and sprays.

### What's the most curly question or situation you have encountered recently?

Some years ago we found an old pallet-load of DDT pesticide buried in the sand hills, not far from a stream. I was very pleased that we managed to remove it all safely.

### What's the most satisfying part of your job?

Sorting out a practical way to clean up a site. I work with the landowners to come up with something that's right for their situation and the future land use.

## REAL BENEFITS FROM "FRIENDLY TOWN" RELATIONSHIP WITH KIYOSATO

A group from Motueka's friendly town Kiyosato in Japan recently visited the Tasman region for a week. Fourteen students from the Kiyosato High School and Kiyosato Junior High, three teachers and a Board of Education representative were hosted by local families.

The group took a tour of Motueka and surrounding farms, swam at Kaiteriteri, attended a formal welcoming party with Mayor Richard Kempthorne, took part in a competition involving Motueka shops and amenities, and attended classes at Motueka High School. They also gave a demonstration of Kendo (Samurai sword fighting) and Japanese dance. Maki Taruishi, one of the Kiyosato group, has stayed on in Motueka to improve her English and learn more about Kiwi culture.

Students and teachers from Kiyosato visit Motueka in February each year, and have done so since 1991. Mary La Frantz is one of the key organisers and has been involved since the very first visit. She says Motueka has benefited hugely from the relationship.

"The Friendly Town agreements are important for peace and

understanding in our small world. The opportunities for the students of Motueka have been a thousand times more than I could have guessed at in 1990. Two Motueka students have returned with teaching qualifications, eight students have lived in Kiyosato for a year and many have gone on to use the language in various vocations."

Mary La Frantz says she would love to see the student exchange programme pick up again as there hasn't been a Motueka student in Kiyosato since 2004.

- Kiyosato is located on the northern island of Hokkaido, approximately 600km from the 11 March 2011 earthquake. We send our best wishes to all of those affected by the recent events in Japan.

MOVE UP TO A LEGENDARY DEERE JOHN DEERE

**RICHMOND EQUIPMENT**

Your only Top of the South grounds care dealership  
Sales • Service • Repairs • 18 years of friendly reliable service

56a Gladstone Road, Richmond • Ph. 03 544 6122  
www.richmondequipment.co.nz

**SEPCLEAN**  
LIQUID WASTE  
Environmentally safe waste disposal specialists

Motueka (03) 528-7349  
Richmond (03) 543-8248  
Fax (03) 543-8247  
Email sales@sepclean.co.nz  
PO Box 3389, Richmond  
Freephone **0800 725 326**

Septic tanks, sumps, grease traps and other liquid waste





# WRITE CHOICES

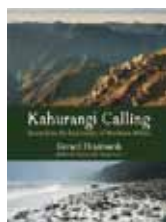
NEWS FROM THE TASMAN DISTRICT LIBRARIES

## Gerard Hindmarsh at Motueka Library

Head into Motueka Library on Wednesday 30 March 2011 at 7.00 pm to hear Golden Bay author, Gerard Hindmarsh, talking about his latest book "Kahurangi calling".

For well over 20 years, Gerard has been collecting stories from Kahurangi. In this book he has woven the best of them into a fascinating blend of natural and social history. As well as describing many of the ecological treasures that are found in Kahurangi, Gerard tells the stories of the fascinating characters that have travelled and lived here: explorers, miners, graziers, trampers and other adventurers, eelers, hermits and many others.

Gerard's talk will appeal to anyone with a love of our backcountry and the colourful people that are drawn to these places.



## Reduced hours at Murchison Library

From Thursday 21 April to Friday 29 April 2011 the Murchison Service Centre and Library will be operating with reduced hours from 10.00 am – 12.00 pm and 1.00 pm – 4.00 pm.

We apologise for any inconvenience this may cause.

## Teens' bookgroups

Did you know that both Motueka and Richmond Libraries run book clubs for their young adult readers? And they don't just talk about books! Movies, music and magazines feature large in the discussion. Superior snacks provided!

If you're aged 12-17 and want to find out more, contact Mary at Motueka on Ph. 03 528 1047, Heather at Richmond on Ph. 03 543 8394, or check out the library website [www.taslib.govt.nz](http://www.taslib.govt.nz)

## Speaking of book groups...

Are you stuck in a rut with your reading? Listlessly browsing the shelves?

We have just the thing to brighten up your literary life – Takaka Library's new monthly Book Group starts Tuesday 29 March 2011 at 1.30 pm.

We aim to make it a lively hour full of fun and discussion. It's a group for all people and all tastes, to evolve as its members choose.

So if you are keen to widen your horizons, call Tish or Margie on Ph. 03 525 0059, or just turn up on the day, ready to read!

## School holidays are nearly here again

School holidays again - I know, hard to believe isn't it?! Check out your library website [www.taslib.govt.nz](http://www.taslib.govt.nz) to see the wide range of activities on offer at all Tasman's libraries over the coming holidays.

From stories and craft sessions to sharing favourite YouTube clips, creating music or learning the art of the barista – there's heaps happening at your local library.

## Coming soon to a library near you

**Sing you home by Jodi Picoult**

The latest from this popular author, "Sing You Home" is about identity, love, marriage, and parenthood.

It's about people wanting to do the right thing for the greater good, even as they work to fulfil their own personal desires and dreams.



**The land of painted caves by Jean Auel**

The highly anticipated sixth book of Jean Auel's Earth's Children series, The Land Of Painted Caves, is the culmination fans have been waiting for.



Repay your debt faster...

Borrow \$10,000 or more from as little as \$55 per week and let us help you become financially stronger.

Check out member success stories on our "NZCU South" Facebook page and join us on your road to financial success.

Normal lending criteria apply.



**nzcu**  
south

Nelson: Shop 2A, 126 Trafalgar St **03 539 1700**  
Richmond: Shop 3, 250 Queen St **www.nzcusouth.co.nz**

**Your money, your goals, our help**

Savings in Credit Union South are secured by a first ranking Trust Deed over all assets of Credit Union South, subject to prior charges (currently none) and claims given priority by law. Credit Union South has a BB (Stable) credit rating from Standard & Poor's. A current investment statement is available on request.

## Support & Respect through your loss

Email: [support@wrfs.co.nz](mailto:support@wrfs.co.nz)  
Web: [www.wrfs.co.nz](http://www.wrfs.co.nz)  
Corner Salisbury &  
Champion Roads, Richmond

# 544 4400



## WAIMEA RICHMOND FUNERAL SERVICES



New Zealand  
Independent  
Funeral Homes  
Member.



Alistair Ferguson (Dip F.S.)

# NEWSUPDATE

## PUBLIC NOTICES

### Resource Management Act 1991 Tasman Resource Management Plan

#### Legal Effect of Parts of Proposed Change 22 Mapua and Ruby Bay Development

Tasman District Council has prepared Proposed Change 22 to the Tasman Resource Management Plan in accordance with Schedule 1 Resource Management Act 1991. Proposed Plan Change 22 was publicly notified in accordance with Clause 5, Schedule 1 of the Resource Management Act on 26 February 2011 and submissions close on 11 April 2011.

Proposed Change 22 allows for future expansion of Mapua township and Ruby Bay away from low lying land and the inundation and erosion prone coastline between Mapua and Ruby Bay, onto more elevated land northwest of the township.

Following an application by Council to the Environment Court, the Court has ordered that some of the rules in Proposed Change 22 take immediate legal effect under Section 86D of the Resource Management Act 1991 in accordance with its decision dated 28 February 2011 (Decision No. [2011] NZEnvC 47). These rules in the Tasman Resource Management Plan are:

1. All amendments relating to the Coastal Hazard Area rules in Section 18.9 (rules 18.9.2.1 - 18.9.2.4).
2. All amendments relating to the Rural 1 Coastal Zone (rules 16.3.5.1, 16.3.5.3 and 16.3.5.4).
3. Amendments to the prohibited subdivision rules that apply in the Residential Closed Zone at Ruby Bay and parts of Tahī and Iwa Streets at Mapua (rule 16.3.3.6) and Rural 1 Closed Zone at lower Seaton Valley (rules 16.3.5.3 and 16.3.5.4).
4. Amendments relating to the rules on second dwellings in the Residential Closed Zone at Mapua and Ruby Bay (rules 17.1.3.2 and 17.1.3.4).

The Court has directed the Council to publicly notify this decision.

Copies of the Plan Change are available on the Council's website [www.tasman.govt.nz](http://www.tasman.govt.nz) or at the following locations:

- Tasman District Council offices, Queen St, Richmond
- Mapua Library, Aranui Road, Mapua

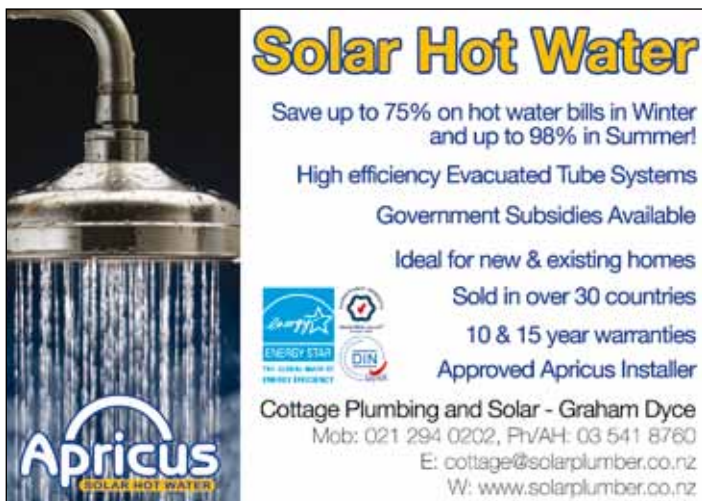
If you have any queries, please contact the Policy Manager, Steve Markham or Policy Planner, Rose Biss, Ph. 03 543 8421.

## PUBLIC NOTICES

### The Tasman District Council Consolidated Bylaw: Chapter 11: Freedom Camping: Summary of Information

This summary is made to fulfil the purposes of Sections 83, 86 and 89 of the Local Government Act 2002. The summary contains details of the Statement of Proposal for the Draft Bylaw.

- A. The Tasman District Council has for some time had a Freedom Camping Policy that allows self-contained camper vans and other fully self-contained vehicles to be used for camping on specified Council controlled public land. A number of conditions are imposed, including limiting stays, and imposing conditions on waste disposal.  
The Draft Bylaw replaces the policy, and has as its purpose the protection of public health, the avoidance of nuisance and fire risk, by regulating freedom camping within the district. The Draft bylaw restricts freedom camping in certain places, including defined Department of Conservation land, and provides for fines to be issued to persons found to be camping in breach of the Bylaw.
- B. The full Statement of Proposal including the Draft Bylaw may be inspected during ordinary office hours at the following places:
  - Tasman District Council, 189 Queen Street, Richmond
  - Tasman District Council, 7 Hickmott Place, Motueka
  - Tasman District Council, 92 Fairfax Street, Murchison
  - Tasman District Council, 78 Commercial Street, Takaka
  - District Library, Queen Street, Richmond
  - Motueka Library, Pah Street, Motueka
  - Takaka Memorial Library, Commercial Street, Takaka
- C. A copy of the full Statement of Proposal may be viewed or copied from the Tasman District Council web site at: [www.tasman.govt.nz](http://www.tasman.govt.nz)
- D. Submissions on the proposal are to be in writing and posted or delivered to: The Executive Assistant, Tasman District Council, Private Bag 4, 189 Queen Street, Richmond 7050, or they may be emailed to [info@tasman.govt.nz](mailto:info@tasman.govt.nz) or faxed to 03 543 9524. Submissions can also be made online at [www.tasman.govt.nz/freedom-camping](http://www.tasman.govt.nz/freedom-camping).
- E. Submissions due by 4.30 pm 12 April 2011.



**Solar Hot Water**

Save up to 75% on hot water bills in Winter and up to 98% in Summer!

High efficiency Evacuated Tube Systems  
Government Subsidies Available  
Ideal for new & existing homes  
Sold in over 30 countries  
10 & 15 year warranties  
Approved Apricus Installer

**Apricus**  
SOLAR HOT WATER

Cottage Plumbing and Solar - Graham Dyce  
Mob: 021 294 0202, Ph/AH: 03 541 8760  
E: [cottage@solarplumber.co.nz](mailto:cottage@solarplumber.co.nz)  
W: [www.solarplumber.co.nz](http://www.solarplumber.co.nz)



**FLETCHER VAUTIER MOORE**  
LAWYERS

Our Richmond office has moved to new premises at:

**265a Queen Street, Richmond**  
(opposite the public library)

P O Box 3029 Richmond  
Ph 03 543 8301  
Fax 03 543 8302  
[www.fvm.co.nz](http://www.fvm.co.nz)



# NEWSUPDATE

## RESOURCE CONSENTS

The Council has received applications for resource consents, which have been publicly notified in The Nelson Mail. The applications and supporting information may be examined in any Council office. The full public notice may be found online at Council's website ([www.tasman.govt.nz](http://www.tasman.govt.nz)). Any person may make a submission on the applications in accordance with Section 96 of the Resource Management Act 1991. Submission forms are available from Council offices and on Council's website. Please note that the following is an abridged advisory notice only.

**Applicant:** CBH Ltd.

**Location:** Ridgeview Road, Appleby.

**Consent Type, Application Number and Proposal:**

**Subdivision Consent (Application RM100632):**

To subdivide a 57 hectare property of Rural 3 zoned land held in two Certificates of Title into 38 residential allotments to be released in eight stages. This consent will be to replace the existing resource consent RM030632 authorising 28 residential allotments in the same area.

**Land Use Consent (Application RM100633):**

To construct 10 residential buildings without a rainwater collection system for domestic use and to construct three rights of way.

**Land Disturbance (Application RM100637):**

To construct 10 building platforms and accessways for proposed Lots 74, 75, 78 – 85 and earthworks to form the proposed rights of way.

**Discharge Consent (Application RM100638)**

To discharge stormwater to an existing irrigation dam and to the eastern gully contained within Lot 1 DP 427937.

**Discharge Consent (Application RM050727V5)**

To vary an existing wastewater discharge consent to allow for an additional 10 dwelling equivalents to connect to an existing wastewater treatment and disposal system.

**Watercourse Consent (Application RM110226)**

To complete associated works in the bed of a watercourse.

**Submissions due:** 4.30 pm on Friday 8 April 2011.

## RESOURCE CONSENTS

**Applicant:** Settlers Crossing Vineyard Ltd.

**Location:** 103 Bryant Road, Brightwater.

**Consent Type, Application Number and Proposal:**

**Subdivision Consent (Application RM110077):**

To subdivide Lot 2 DP 18212 to create the following:

- Lot 1 of 0.18 hectares (containing an existing dwelling);
- Lot 2 of 4.47 hectares to be held together with Lot 1 DP 18213 and Lot 6 DP 18856 by an amalgamation covenant pursuant to Section 220(2)(a) of the Resource Management Act 1991.

**Land Use Consent (Application RM110078):**

Relating to the building setbacks on proposed Lot 1 adjoining a vineyard.

**Water Permit (Application RM110083):**

A variation to water permit NN010235 to change the legal description where water is used.

**Submissions due:** 4.30 pm on Friday 1 April 2011.

## 24 Hour Assistance – Phone your local office

<b>Richmond</b>	<b>03 543 8400</b>	<b>Motueka</b>	<b>03 528 2022</b>
<b>Murchison</b>	<b>03 523 1013</b>	<b>Takaka</b>	<b>03 525 0020</b>

*Tasman Newline The Mag* is produced by Dry Crust Communications for Tasman District Council and is printed by Printhouse on recycled/recyclable paper. For advertising and editorial enquiries please contact Dry Crust on phone 03 544 4975 or fax 03 544 4951.

## COUNCIL MEETINGS

**Agendas and Minutes for Council Meetings can be viewed on Council's website at [www.tasman.govt.nz](http://www.tasman.govt.nz)**

**Environment and Planning Subcommittee (Shortley and Brown)**

Tasman Council Chambers, 189 Queen Street, Richmond, Monday, 28 March 2011, 9.30 am. *No public forum*

**Communications Subcommittee**

Motueka Office, 7 Hickmott Place, Motueka, Tuesday, 29 March 2011, 9.30 am. *No public forum*

**TRMP Hearing No 60 Decisions**

Tasman Council Chambers, 189 Queen Street, Richmond, Wednesday, 30 March 2011, 9.30 am. *No public forum*

**TRMP Hearing No 60 Decisions**

Tasman Council Chambers, 189 Queen Street, Richmond, Thursday, 31 March 2011, 9.30 am. *No public forum*

**TRMP Hearing No 60 Decisions**

Tasman Council Chambers, 189 Queen Street, Richmond, Friday, 1 April 2011, 9.30 am. *No public forum*

**Full Council**

Tasman Council Chambers, 189 Queen Street, Richmond, Thursday, 7 April 2011, 10.15 am. *Public forum*

## Resource Consents

Resource Management Consultants and surveyors

### Also in Mapua

Building related RC consents

Subdivision consents

Discharge consents

Boundary Adjustment

Land Survey -GPS

Power Easements

Boundary Marking

Site Plans- Contours



Simon Jones  
[simon@jals.co.nz](mailto:simon@jals.co.nz)



Andrew Stanger  
[andrew@jals.co.nz](mailto:andrew@jals.co.nz)

03 548 2833

**Jones & Associates Ltd**  
Registered Professional Surveyors  
[www.jals.co.nz](http://www.jals.co.nz)

# PHOTO COMPETITION ON A ROLL

Last year they received just over 550 photos, 350 of which were displayed. The SeniorNet Digital Interest Group of Motueka is on a roll in the fourth year of their successful photo competition, run in conjunction with the Motueka Festival of Lights in June 2011.

## Photographers compete in seven categories:

- Portrait
- Close up/macro
- Our place – the Tasman District (photo from within the Tasman District Council boundaries)
- Nature – animal, bird or insect
- Action -- people at work or play
- Humorous – signs or scene
- Open category

Entries close 20 May 2011.

The competition has doubled in size since it began. Organiser Shirley Frater says it also spawned the 30-strong Motueka Camera Club.

Tasman District Council contributes to the competition through the Motueka Community Board's discretionary fund.

Entry forms are available at Westrupp Jewellers, various businesses around town, or can be downloaded from the SeniorNet Motueka site [www.seniornetmotueka.org.nz](http://www.seniornetmotueka.org.nz), and [www.motuekaonline.org.nz](http://www.motuekaonline.org.nz).

The photos will be exhibited from 18 June to 29 July 2011 at Motueka Museum and Muses Café next door. Entry is free.



## HALL AND RESERVE MANAGEMENT COMMITTEES – TRIENNIAL ELECTIONS

Management Committees are groups of volunteers who look after some of our Districts halls and reserves on behalf of Tasman District Council, taking care of bookings/usage and maintenance. The committees are elected three yearly and the next round of elections is currently underway.

Ngatimoti Recreation Reserve and Ngatimoti Hall Committee triennial election meetings to be held at the Ngatimoti Community Rooms, at the Fire Station, on Wednesday 30 March 2011 at 7.30 pm.

Hope Recreation Reserve and Hall Committee triennial election meeting to be held at the Hope Hall, Richmond, at 7.30 pm on 31 March 2011.

Wakefield Recreation Reserve Triennial Election Meeting to be held on Thursday 7 April 2011 at 7.30 pm at the Reserve.

Upper Takaka Hall Committee Inc triennial election meeting to be held at the Upper Takaka Hall at 7.30 pm on Tuesday 12 April 2011.

Dovedale Residents Committee Triennial election Meeting to be held at the Dovedale Hall, at 7.00 pm on Tuesday 19 April 2011

For further information please contact Francie Wafer, Community Services Administrator, Tasman District Council, Ph 03 543 8468 or email [francie.wafer@tasman.govt.nz](mailto:francie.wafer@tasman.govt.nz).



## ***Taking care of your environment***

- **Landscaping** - Residential and corporate design and construction
- **Tree Services** - Smart tree solutions from qualified arborists
- **Garden Maintenance** - All aspects of property care
- **Turf Services** - Lawn mowing, establishment and renovation
- **Carpentry and Light Mechanical Engineering**
- **Water Pipe Tracing and Leak Detection**
- **Rubbish Collection** - Richmond Urban areas only

**03 546 0910**      [www.nelmac.co.nz](http://www.nelmac.co.nz)



# **NELMAC**

