

## ANNUAL PLAN A REFLECTION OF THE TIMES

Tasman District Councillors have taken a hard line with their Annual Plan deliberations and managed to keep the general rate rise this year to less than 4%, down from 5.12% predicted in the Ten Year Plan. The focus for Council was the need to deliver the District's core services to an acceptable standard and affordable cost.

The 3.97% general rate rise recognises the still tough financial climate and the impending changes to the GST regime. Ratepayers should be aware that individual targeted rates will affect the overall rate paid, with the combined general and targeted rates increase being around 5% for most ratepayers. This includes a 3% allowance for inflation.

Many submitters to the draft Annual Plan had requested additional funding for a wide variety of projects and special interests. At the same time other submitters had asked that the rate increase be kept to a minimum in the current difficult economic climate.

"We take the duty of care given to us by the ratepayers very seriously and as a result ensure our decisions balance the need for financial restraint while taking into account the future demands of the growing District," said Tasman Mayor Richard Kempthorne.

"The Council has had to prioritise very carefully the initiatives put forward for next year's plan. We have demanded from management very clear rationales and budgets for the projects as well as stringent performance measures to ensure they meet the needs of the District as a whole."



**THIS WEEK:**  
06. Road Safety

03. Community Awards  
09. Library Update

04. Low-cost Housing  
12. Race Track Revving Up



# MAYOR'S COMMENT

As I welcome you to Newsline for the last time this term, residents and ratepayers are being surveyed regarding the services provided to them by the Council. This is an important survey as it informs how we plan and deliver services to the people of the Tasman District. If you have been called and have participated I thank you for your time and feedback. For those who have not been called, your feedback is just as important anytime of the year and you are literally a phone call away from any of your elected representatives.

Why the last welcome? As we are about to enter the pre-election period of October's Local Government elections the Auditor General's advice to elected representatives is to withdraw from

all political comments in all of Council's communication vehicles, such as Newsline, to remove any suggestion of electioneering. This, however, does not mean I will stop performing my role as your Mayor, nor will the Councillors as your elected representatives. As I said above, we are still available to discuss any issues with you.

On behalf of the Council I would like to take this opportunity to thank residents and ratepayers in the District for your support of us all. It is a challenging role at times, but we recognise it is also a privilege to serve you.

- Mayor Richard Kempthorne

## TARGETED TOURISM RATE REMAINS AT PROPOSED LEVEL

The Tasman District Council's targeted rate to support tourism in the District has been held at \$125.78 plus GST per property for the 2010/11 year.

Initial requests for increased funding from Nelson Tasman Tourism to enable them to take advantage of a Central Government leveraged fund had a proposed increase to \$193 plus GST. This request was withdrawn within the consultation period.

The agency did, however, maintain a request for a \$50,000 increase on their base funding. In order to facilitate the request, the Council decided to extend the targeted rate's base to include holiday homes that were rented on a short term basis for profit. Council will now also charge each separately used part of a retail property a targeted rate.

The Council has established that there are fewer properties subject to the targeted rate than expected, however, Councillors have decided not to increase the rate in response, meaning that Nelson Tasman Tourism will receive an increase of approximately \$31,000 for the coming year, as opposed to the \$50,000 requested.



## HOME BUILDER OF THE YEAR. AGAIN.



Why more New Zealanders trust G.J. Gardner Homes to build their homes... year after year.

With so many builders vying for your business, it's sometimes difficult to decide who to trust with a project so dear to your heart as building a new home.

Experts suggest the best course of action is to take a thorough look at the builder's track record, view examples of their work and most important, talk to some of their customers.

It's a process many of our customers went through before deciding to build with us.

G.J. Gardner Homes is a network of individual owner-operated businesses, so you get all the advantages of dealing with local people in your community, backed by the resources, buying power and security of a large, national group.

As our customers have discovered, it's a combination that provides the best of both worlds: excellent value as well as genuine commitment and service.

It's just one of the reasons why more people have built with us over the last five years than any other builder.

### NELSON

195 Queen Street, Richmond. Phone: (03) 543 9502  
OPEN Mon to Fri 9am-5pm

### SHOWHOMES

55 Champion Road. Phone: (03) 544 2795  
4 Daelyn Road. Phone (03) 544 0010  
OPEN Mon to Fri 11am-4pm. Sat & Sun 1pm-4pm

0800 42 45 46  
www.gjgardner.co.nz

G.J. Gardner. HOMES

GJ-HBY-657-NL0610



# OUTSTANDING RESPONSE TO COMMUNITY AWARDS

Nominations for the TrustPower Nelson Tasman Community Awards closed at the end of May 2010 with 116 nominations received, an improvement on last year's impressive total of 114.

TrustPower Community Relations Co-ordinator Pip Tschudin says she is delighted that so many selfless community groups will be celebrated through this year's TrustPower Community Awards.

"These outstanding groups are very generous with their time and work hard to make the Nelson and Tasman regions a better place

to live. The volunteers never ask for anything in return; but, it is wonderful that through these awards we can celebrate the fantastic effort being put into this community," says Mrs Tschudin.

The Nelson Tasman Community Awards, which recognise and reward volunteers for the outstanding contribution they make to the local community, are run in conjunction with Tasman District and Nelson City Councils.

The nominations for the TrustPower Nelson Tasman Community Awards are currently being prepared for judging. The Awards will be announced and presented at a function on Monday 5 July 2010, to which all nominated organisations will be invited.

## MAPUA AND RUBY BAY DEVELOPMENT TO BE MANAGED

The future development and expansion of Mapua and Ruby Bay is currently under review by Council.

The proposed amendments to the Tasman Resource Management Plan governing the two areas was the focus of information sent to landowners recently, prior to public meetings where the proposals were discussed in greater depth.

With a specific focus on low-lying land and coastline – both prone to erosion and climate change-driven sea-level rises – the proposals are looking to the development possibilities on the more elevated land northwest of the township.

As the area becomes more desirable as a destination, largely driven by the Ruby Bay Bypass, the Council recognises the importance of

discussing these proposals with those who currently live in the area. In light of Government guidance regarding climate change, the Council has no choice but to investigate the current planning rules for the area. It is taking a community partnership approach to this work and is looking to involve residents as much as possible with meetings and information to assist those who wish to take part.

The proposals take into account the remediation of the previously publicised contaminated site near the township and the Waimea Estuary. Complementing the historic Mapua wharf area, a small extension of the existing central commercial area in Aranui Road is also in the mix.

The change will be complemented by a rejuvenation of infrastructure that is well coordinated and designed to address current and future needs. New development will be deferred until the current infrastructure has been upgraded.



Your trusted local eyecare professionals since 1957.

NELSON. 1 Buxton Square. Tel 03 548 3249  
RICHMOND. 211 Queen Street. Tel 03 544 4319  
MOTUEKA. 217 High Street. Tel 03 528 8724  
[www.matthews.co.nz](http://www.matthews.co.nz)

( MATTHEWS )  
Eyewear. Eyecare.

Optometrists, Dispensing Opticians & Contact Lens Practitioners.



# LOW-COST HOUSING CUTS POWER BILLS

Nine new low-cost housing units in Canterbury Court, off Hart Road in Richmond, use eco-technology to keep expenses down for tenants.

The two-bedroom units, designed and built by Jennian Homes, have extra-thick ceiling and wall insulation, double-glazing, heat-pumps, solar hot-water heating, concrete floors and other design features such as open-plan to capture the sun's warmth, insulated front doors, "click-cartridge" taps to cut water use, and products chosen for low levels of toxic chemicals.

The Nelson Tasman Housing Trust development also features landscaped sections, with room for vegetable gardens, and swales, or natural channels, to deal with stormwater run-off.

Trust member Kindra Douglas says rents are set at less than 80 percent of market rate, and some tenants have come from Housing New Zealand waiting lists, plus referrals from agencies such as the Women's Centre, Family Start and the Salvation Army. Tenants range from young mothers to a woman in her 70s.

The Trust, set up to fill a gap in affordable housing, now has 15 units in the Nelson region. Kindra says the significance of Canterbury Court is it was fully funded, to the tune of \$2 million, by the Canterbury Community Trust. To mark 20 years in existence, the Canterbury Community Trust pledged to give \$20 million towards projects



From left, Canterbury Community Trustee Bill Dahlberg, Nelson Tasman Housing Trust Chair Keith Preston, Tasman Mayor Richard Kempthorne and Canterbury Community Trust Chairperson Barry Dent at the official opening of the new units.

in the upper South Island in 2009-2010, she says.

This latest development puts the Housing Trust on solid ground financially, says Kindra, improving its chances to borrow from banks to provide more homes.

Right: Washbasin water is reused in the toilet cistern – just one of the eco-friendly features of the new units.



**Create your own beautiful garden with house wastewater**

Purification is done with plants, microbes and sunlight rather than harmful chemicals, to produce a beautiful landscaped garden.

**WASTEWATER GARDENS®**

**Allflow**  
WASTEWATER

58 Gladstone Road, Richmond  
Ph 03 543 8004  
Email [wastewater@allflow.co.nz](mailto:wastewater@allflow.co.nz)

**You don't need to be alone when tackling your debts.**

**Money Management**

Let NZCU South's Money Management Service help you get on top of your debts, so you can look forward to a debt free future. You will receive ongoing "one on one" professional help. Become debt free and attain those financial goals with this valuable service.

**Contact your local NZCU South Branch for more information**

**Nelson** Shop 2A, 126 Trafalgar St, Ph: 548 9821  
**Richmond** 250 Queen St, Ph: 544 2435  
[nelsoncu@nelsoncu.co.nz](mailto:nelsoncu@nelsoncu.co.nz) [www.nzcusouth.co.nz](http://www.nzcusouth.co.nz)

**nzcusouth**

Savings, investments and deposits in Credit Union South are shares secured by a First Ranking registered Trust Deed. A current Investment Statement and Prospectus are available. Credit Union South has a guarantee under the New Zealand guarantee scheme.





## IMPRESSIVE WELCOME TO MOTUEKA

Funding for Motueka's new entrance sign was secured in 1995 – and it has finally been unveiled 15 years later.

The impressive wall of river stone, with carved bollards at either end and the town's name written in large flowing script, is near the roundabout at the southern entrance to Motueka.

Howie Timms, chair of Our Town Motueka, picked up the stalled scheme two years ago. The design had been drafted, and negotiations began with the New Zealand Transport Agency over the setting. It was originally set at five metres from the white-line edge of the road, but was relocated to nine metres away to allow for a possible widening of the tarmac.

Local landscaper and stonemason Mike Adams built the sign, with master carver John Mutu, from Te Awhina Marae, decorating the bollards. Their finished work stands 1.8 metres high by 7.5 metres long.

Mike says he was nervous working in river stone, for the first time after 25 years in the trade, but "I couldn't have wished for better" in terms of result. The stainless steel lettering has a reflective speckle that shows up well against the matt grey rock.

Mike says river stone can't be chipped and shaped to fit, so building a wall is a matter of selecting the right stone.

"For every rock you see there were 1000 looked at and cast aside."

Howie is "rapt" with the finished work and is already contemplating scaled-down versions for the northern entrance and the inland routes into town.

He expressed gratitude to Tasman District Council Transportation Manager Gary Clark for finding an extra \$1700 from the Gateways scheme to complete the sign after costs increased.

Shirley Frater, Motueka Arts Council, paid tribute to the Motueka Horticultural Society for cleaning up the site. As for the sign, "I am over the moon because they have included and followed the theme of the Motueka River," which features in the present streetscape of the High St shopping area.

(John Mutu's work can also be seen in the street furniture.)

Shirley says the theme is appropriate because the river has dominated the history of Motueka, from early Maori who used it as a food source and for transport, to European horticulture such as apples, tobacco and hops, grown in rich silt deposited by the river.

Mike says once the two years worth of decision-making over issues such as siting etc were settled, "it all went rather smoothly". The actual building process took two months at a site he dubbed "rubberneck corner" because of the attention of passing traffic. Mike wishes to thank everyone involved in the project.



**Environmentally safe waste disposal specialists**



Motueka (03) 528-7349  
 Richmond (03) 543-8248  
 Fax (03) 543-8247  
 Email sales@sepcclean.co.nz  
 PO Box 3389, Richmond  
 Freephone **0800 725 326**

**Septic tanks, sumps, grease traps and other liquid waste**

**OUR SPORTING PASSION!**



**CALENDAR**



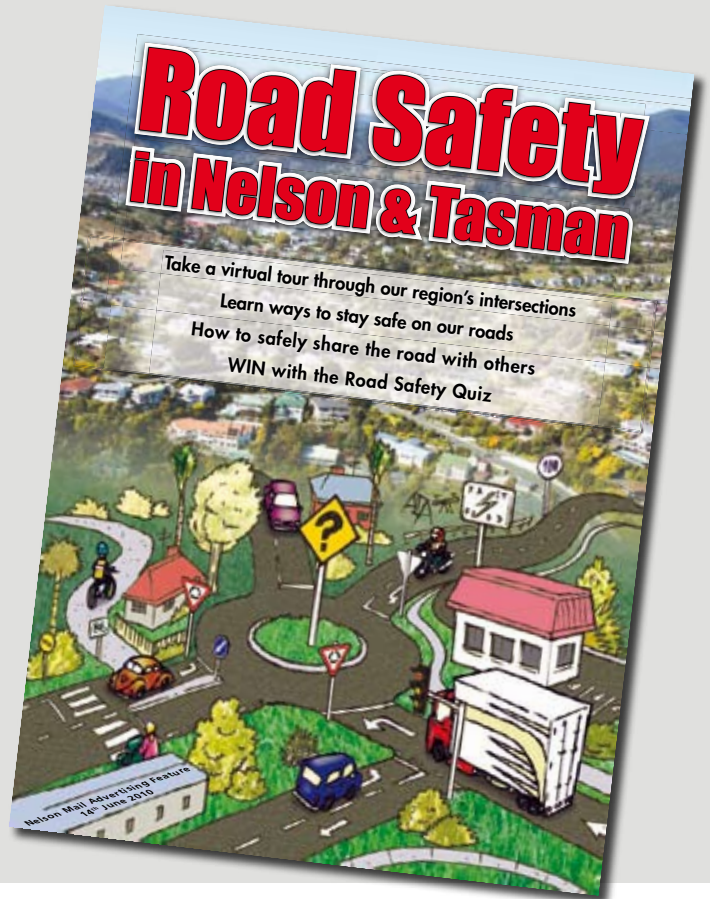
# STAYING SAFE ON OUR ROADS

Tasman District Council, Nelson City Council, ACC and the New Zealand Transport Agency, recently published a 24-page road safety publication in The Nelson Mail and community newspapers.

Its aim was to help drivers in our community understand some of the issues that are causing crashes on our roads.

You can find an electronic copy of the publication at [www.tasman.govt.nz](http://www.tasman.govt.nz), search 'road safety'.

Over the next few issues of Newsline we will be highlighting the content from that publication specific to the Tasman District and also offering advice and tips on how to stay safe on our roads. We start in this issue with Richmond and the McGlashen Ave, Queen Street and Oxford Street junctions



## HUNTERS TAKE AIM AT PRIZES

Owen River Tavern claims to have been the first pub in New Zealand to introduce a pig and deer hunting competition, and this year is the 26th event.

Hunters from throughout the Top of the South will descend on the tavern from Friday 2 July 2010. The three-day hunt continues until weigh-in at noon on Sunday 4 July 2010.

With \$5000 in prizes on offer, tavern co-owner Kim Siu says they are expecting more than 80 entries, with supporters swelling the muster to 120.

Youngsters are also catered for with prizes for heaviest possum (a buyer will be on hand to put the fur to good use), wild goat and rabbit or hare.

The adults will be aiming for heaviest boar (\$300), sow (\$100) and deer (\$150), among other categories, plus a fun bonus for "Longest tail or best tale".

The biggest prize of \$400 goes to the average weight animal. Kim says that last year the pigs averaged 71kg and the deer 78kg.

Hunters tend to congregate at the tavern each night to swap stories and suss out who's bagged what, she says.

\* Australians nicknamed New Zealand "the Pig Islands" in the late 19th century because of the prevalence of wild pigs, first introduced by French explorer Jean François Marie de Surville in 1769, says the tavern website. Captain James Cook gifted pigs to Maori in the 1770s – so feral pigs are sometimes called "Captain Cookers".

In the 1930s a government bounty of "two bob a snout" was paid for each pig killed. About 100,000 feral pigs were estimated to be killed by hunters in 1988.

Red deer were liberated by early European settlers for recreational shooting. But they thrived far too well, causing heavy damage to forests – Forest & Bird has dubbed wild deer as "possums on stilts".

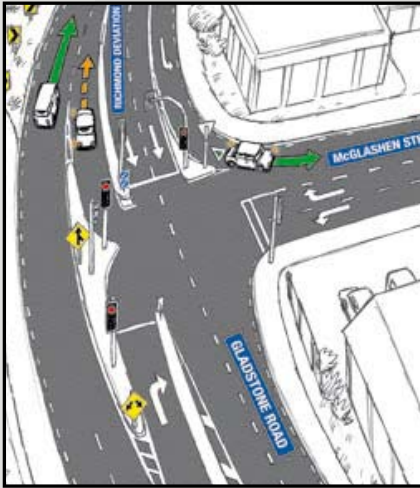
In 1993 one estimate put the feral deer population at 250,000.



# STAYING SAFE ON OUR ROADS

## McGlashen Ave, Queen Street, Oxford Street

The recent McGlashen Avenue intersection improvements and the installation of traffic signals at the Talbot Street and Salisbury Road intersection are now complete. The new layout means traffic will flow more easily around the Richmond Town Centre with McGlashen Avenue/Talbot Street/Salisbury Road and Oxford Street acting as a ring-road.

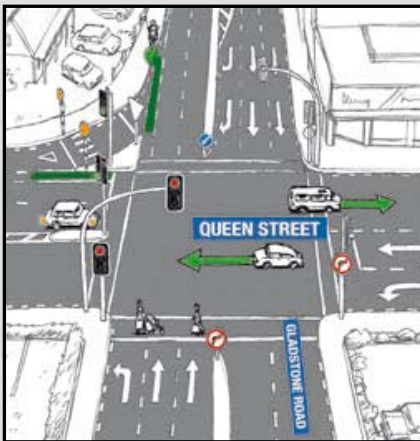


To reduce congestion in the Town Centre and make the ringroad work, turns into Queen Street have been banned from the SH6 intersection, so it is good to plan where you want to go and choose your entry into the Town Centre to suit – choose to go either via McGlashen Ave to park in the Petrie or Sundial Carparks or go via Oxford Street to access the Cambridge or Waring Carparks.

Here is what you need to know.

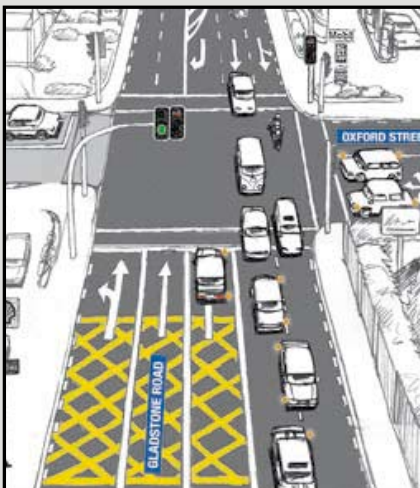
### At McGlashen Avenue & Richmond Deviation:

- Traffic coming from Nelson who want to access the Richmond town centre should turn left here.
- Traffic turning right from McGlashen Avenue onto the deviation need to indicate their intention to change lanes and move left into the main northbound lane when it is clear to do so.



### At Queen Street:

- There is no left turn allowed from the Richmond Deviation into Queen Street.
- There is no right turn allowed from the Queen Street town centre onto the Richmond Deviation.
- There is no right turn allowed from Gladstone Road into the Queen Street town centre.
- Where right turns are allowed the signals have a turning arrow as part of the phasing.
  - You must not turn right when the red arrow is lit and must stay behind the limit line.
  - Once the red arrow has gone out, the first driver can move into the intersection and wait for a suitable gap to turn. Following drivers should be aware they cannot enter a blocked intersection.
  - If traffic is heavy and the light turns yellow, the car waiting in the intersection may complete their turn when the way is clear.



### At Oxford Street:

- Traffic coming from the south should turn right here to access the town centre.
- Yellow cross-hatchings in front of the Shell service station indicate that cars should keep this area clear.
- When travelling south along SH6 just past the Oxford St intersection into the merge lane, where two lanes reduce to one lane, use courtesy and merge “like a zip”.

Being courteous and allowing one vehicle from each lane to alternatively flow into the single lane improves traffic flow and increases the number of vehicles that can pass through each signal phase.
- Traffic from the Shell Station need to position themselves over detector loops (this means stopping behind the limit line) to activate a light phase.

# WALKWAYS CHAMPION CELEBRATED

Bob Cooke, one of Motueka's mainstays, was awarded the prestigious Paul Harris Fellowship by the Rotary Club recently, in recognition of his unstinting work for Keep Motueka Beautiful.

The group now has 7km of walkways, including the Estuary and Inlet tracks, plus Old Wharf Road to Wharf Road, with plans for more. Bob is project manager, supervising the forming and landscaping of walkways.

He also built the street littercart that cleans up the urban landscape three times a week for Keep Motueka Beautiful.

The 80-year-old's tireless work belies his years. Bob repairs and operates the machinery at the Motueka Golf Club, and has a 40-year involvement with the Nelson Motorcycle Club.

He was hoodwinked by the local Rotarians with an invitation to talk about his life. At the end of his speech he became aware that his attendance was mainly to give him the award.



Bob Cooke and wife Nancy, surrounded by family, from left son-in-law Colin Eggers and wife Jeanette, daughter-in-law Nicki and son Brent, plus grandchildren Ashley and Courtney.

## STUNNING IMAGES ON DISPLAY

More than 500 entries for the popular Motueka photograph competition, aligned to the Festival of Lights, had to be whittled down to 340 for display, says organiser Shirley Frater.

Volunteers from the Digital Interest Group of SeniorNet had a "huge job" in cataloguing and mounting the prints, which can be viewed at the Motueka Museum and Muses café until the end of July 2010.

The photos were judged by Barry Doig of Nelson. Shirley says the most popular categories this year were Our Place Tasman, and Nature.

"Some of the bird ones, I don't know how they had the patience. They are out of this world."

The other categories are Heritage, Portrait/Family, Close-up, Creativity and Panorama.

The competition is made possible by grants from Tasman District Council's Creative Communities scheme and the Motueka Community Board, plus raffles run by the digital group, which has about 35 members.

Entering the competition is free, and local businesses contributed \$2300 in prizes.

Shirley says the competition has generated a spin-off in the creation of the Motueka Camera Group, which already has about 30 members.

## ROADSIDE SPRAYING

Contractors employed by New Zealand Transport Agency undertake an ongoing vegetation control programme to ensure that roadside vegetation does not affect the safety or operation of the region's state highway network. This programme includes the spraying of chemical herbicides including the following active ingredients: Glyphosate, Metsulfuron, Terbutylazine and Triclopyr. Persons wishing to register their property as a 'no-spray' zone, which requires a commitment to maintain a property's highways frontage to

specifications provided by NZTA, may do so by contacting: Matt Lord on 548-1099 at Opus International Consultants, c/- Private Bag 36, Nelson.



**NZ TRANSPORT AGENCY**  
WAKA KOTAHI





# WRITE CHOICES

## NEWS FROM THE TASMAN DISTRICT LIBRARIES



### Richmond Library update

Only a few days to go and the waiting is over!! By the time you read this Richmond staff will have moved several thousand books and other assorted items, set up new issues and returns desks and organised a myriad of other details to bring you a whole new library experience.

We hope you'll be as excited as we are with the look and feel of the new building, the new and improved facilities and the range of services on offer.

Come and help us celebrate the Grand Opening of the new Richmond Library on Saturday 3 July 2010, 9.15 am – 1.00 pm. We look forward to seeing you there and enjoying the results of the last 10 months' worth of work.

*Richmond Library – same place, different space*

### What's On at a library near you!

#### Storytime sessions - There's magic in the air

Stories, songs and craft for families. For children 4 – 11 years. Preschoolers are welcome with an adult.

**Richmond Library** – Tuesday 6, Wednesday 7, Thursday 8 July 2010 - 11.00 am – 12 noon. No pre-booking but numbers are limited to 50.

**Motueka Library** – Tuesday 6 & 13, Thursday 8 & 15 July 2010 – 11.00 am – 12 noon.

No pre-booking but numbers are limited to 40.

**Takaka library** – Tuesday 6 & 13 July 2010 – 10.30 am – 11.30 am.

#### Lantern making workshop – Motueka Library

Come along to the annual Motueka Rudolf Steiner School lantern making workshop on Wednesday 7 July 2010 at Motueka Library. 10.00 am – 1.30 pm – children under 10 years. Cost \$7.00 each.

1.30 pm – 3.00 pm – children over 10 years. Cost \$9.00 each.

Allow a minimum of 1 hour to make a lantern. Parent helpers welcome.

#### Magical Lantern Walk – Wednesday 7 July 2010, 6.00 pm

Bring your lanterns for a magical tour of the Japanese Gardens, Decks Reserve, Motueka. Everyone welcome.

#### Hands on: Songwriting workshop at Richmond Library

Learn how to write your own original songs with Kath Bee.

Wednesday 14 July 2010, 10.30 am -12.30 pm  
For 9 – 13 year olds.

Cost \$10.00

Numbers are limited to 20. Pre-booking and pre-payment required to confirm a place, Ph: 03 543 8500.

#### Hands on: Unleashing creativity – Art Fun at Richmond Library

Come and create your own artwork with Jeana Packer.

Thursday 15 July 2010

9.30 am -11.00 am – 5-9 years

11.30 am -1.00 pm – 10-14 years

Cost: \$7.50. Materials provided

Limit of 20 for each session. Pre-booking and pre-payment required to confirm a place, Ph: 03 543 8500

#### Banish those winter blues at Takaka Library

Takaka Library's winter series brings you a fascinating speaker or fabulous musicians to help deal to those winter blues.

While away your lunch hour every Friday from 23 July 2010 to 20 August 2010 between 1.00 pm and 2.00 pm.

Keep an eye out for details in your local Golden Bay paper.

#### Introduction to Family History course at Richmond Library

Ever wanted to do your family history research but don't know where to start? Ask about our free "Introduction to Family History" courses to be held at Richmond Library starting in August 2010. Spaces are limited so book now by Ph: 03 543 8500.

#### Tasman Talks Titles Book Group

Do you enjoy reading and talking about books? Then our Tasman Talks Titles book group might be what you're looking for. Join us on Wednesday 21 July 2010 3.00 pm – 4.00 pm when our book group re-convenes in the new Richmond Library.

### Jamie does...

by Jamie Oliver

"Jamie Does" ...is Jamie's personal celebration of amazing food from six very different countries. Each chapter focuses on a different city or region - Marrakesh, Athens, Venice, Andalucia, Stockholm and the Midi Pyrenees region of France. Classic recipes sit alongside new dishes that Jamie learns along the way. What you'll find in this book is fun, optimistic, escapist food you can actually cook and enjoy in your own home.



### The weed that strings the hangman's bag

by Alan Bradley

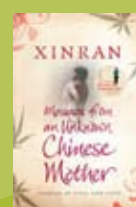
The story opens with the immortal words 'I was lying dead in the churchyard' and ends with a funeral watched by the De Luce family on a newly-installed television set. In between, Alan Bradley weaves a hauntingly nightmarish tale. If you enjoyed Alan Bradley's first novel, "The sweetness at the bottom of the pie", you'll want to read this one.



### Message from an unknown Chinese mother

by Xinran

"Message from an Unknown Chinese Mother" is made up of the stories of Chinese mothers whose daughters have been wrenched from them, and also brings us the voices of some adoptive mothers from different parts of the world. These are stories which Xinran could not bring herself to tell previously - because they were too painful and close to home.



# NEWSUPDATE

## COUNCIL NOTICES

### Tasman Resource Management Plan (TRMP) Proposed Changes 18 & 19 and Proposed Variation 2 to Change 10

#### Kina Site Rezoning

#### Technical Amendments to Parts I and II

#### Protected Tree Addition

Public notice is given pursuant to Clause 5 of the First Schedule of the Resource Management Act 1991 that the Tasman District Council has prepared amendments to the Tasman Resource Management Plan, known as Proposed Changes 18 and 19 and Proposed Variation 2 to Change 10.

Proposed Change 18 amends the planning maps of the Tasman Resource Management Plan by rezoning a parcel of land in Kina from Rural 2 and Open Space zones to Rural Residential Zone.

Proposed Change 19 makes various technical amendments to Parts I and II of the Tasman Resource Management Plan under Clause 20A of the First Schedule of the Resource Management Act 1991.

Proposed Variation 2 to Change 10 amends Part II of the Tasman Resource Management Plan by listing a large oak tree as a protected tree, as requested by the owner.

#### Submissions

Any person may make a submission on any part of the proposed change. Submissions need to be in writing and must clearly indicate support or opposition to the provisions. They must also state the decision that the submitter wishes the Council to make, with reasons, and whether or not the submitter wishes to be heard in support of his or her submission. The submission must also provide an address for service. Forms for making submissions are available as indicated below under "Availability of Proposed Changes/Variations".

**Submissions can be sent to the Manager Policy, Tasman District Council, Private Bag 4, Richmond 7050 to be received by 4.00 pm on Monday 28 June 2010.**

#### Consideration of Proposed Changes/Variations

After submissions have closed, Council will publish a summary of all decisions requested by submitters. There will be a further period of 10 working days within which further submissions in support or opposition to those made may be sent to Council. Council will then hear and make decisions on all submissions. Any submitter who is not satisfied with Council's decisions will have a right of appeal to the Environment Court.

#### Availability of Proposed Changes/Variations

The Proposed Changes/Variations are available for public inspection at the Richmond, Motueka and Takaka offices of the Council. They are also available on the Council website ([www.tasman.govt.nz](http://www.tasman.govt.nz)) under 'Plans, Policies & Reports' Tasman Resource Management Plan (TRMP)\Changes and Variations' or by contacting Pam Meadows Ph 03 543 8581, email [pam.meadows@tasman.govt.nz](mailto:pam.meadows@tasman.govt.nz). Submission forms are also available.

For any further information or advice on these amendments, please contact Steve Markham Ph 03 543 8427, email [steve.markham@tasman.govt.nz](mailto:steve.markham@tasman.govt.nz) or Neil Jackson Ph 03 543 8485.

#### Update Pages to the Plan

Update No. 35 to the Plan, including all amendments to the text as a result of these amendments, will be available as soon as possible.

For enquiries concerning the update, please contact Pam Meadows Ph 03 543 8581, email [pam.meadows@tasman.govt.nz](mailto:pam.meadows@tasman.govt.nz) or one of the Customer Services staff at the Richmond office.

## COUNCIL NOTICES

### Adoption of Bylaw

The following bylaw has been through the Special Consultative Procedure under Part 6 Section 86 Local Government Act 2002, it was considered and approved by the Environment & Planning Committee on 20 May 2010, and as a result the final bylaw was presented to Council at their meeting on 9 June 2010:

Tasman District Council Consolidated Bylaw:  
Chapter 6 – Trading in Public Places 2010.

The Council resolved that this bylaw be adopted and come into force on: 1 July 2010 - Chapter 6 – Trading in Public Places 2010.

This Bylaw is now available for viewing during normal Council hours at the following Council offices:

**Richmond Office**, 189 Queen Street, Richmond

**Motueka Office**, 7 Hickmott Place, Motueka

**Takaka Office**, 78 Commercial Street, Takaka

**Murchison Office**, 92 Fairfax Street, Murchison

And libraries:

**District Library**, Queen Street, Richmond

**Motueka Library**, Pah Street, Motueka

**Takaka Memorial Library**, Commercial Street, Takaka

The bylaw is also available on the Council website at: [www.tasman.govt.nz](http://www.tasman.govt.nz)

### Rabbit Island closed for public firewood collection


Rabbit Island is closed for public firewood collection during the months of June and July 2010.

Firewood will be available again in August and September 2010.


## Resource Consents

Resource Management Consultants and surveyors

### Also in Mapua



Simon Jones  
[simon@jals.co.nz](mailto:simon@jals.co.nz)



Andrew Stanger  
[andrew@jals.co.nz](mailto:andrew@jals.co.nz)

Building related RC consents  
Subdivision consents  
Discharge consents  
Boundary Adjustment  
Land Survey -GPS  
Power Easements  
Boundary Marking  
Site Plans- Contours

03 548 2833

**Jones & Associates Ltd**  
Registered Professional Surveyors  
[www.jals.co.nz](http://www.jals.co.nz)

# NEWSUPDATE

## COUNCIL NOTICES

### Dog Registration expires 30 June 2010

**Dog registrations will expire on 30 June 2010 and anyone who keeps a dog aged 3 months or older is required to register their dog by 31 July 2010.**

Registration forms for all dogs currently on our database will be posted at the end of May. If you have moved from another area, or have changed address within the Tasman area, and did not receive a registration form, please immediately contact your nearest Council office on 03 543 8400 to update your details so that a form can be sent to you.

The fee for dogs that have not been registered by 1 August 2010 will increase by 50% on top of the standard urban or rural registration fee.

The Registration Fee structure for 2010/2011:

Urban Dog for a dog living on a property of less than one hectare	\$47.00
Urban Dog – Late fee (paid after 31 July 2010)	\$70.50
Rural Dog for a dog living on a property that is one hectare or more	\$29.00
Rural Dog – Late fee (paid after 31 July 2010)	\$43.50

If you have any queries, please call Tasman District Council Dog Control on 03 543 8407.

### 24 Hour Emergency – Phone your local office

**Richmond** 03 543 8400

**Murchison** 03 523 1013

**Motueka** 03 528 2022

**Takaka** 03 525 0020

[info@tasman.govt.nz](mailto:info@tasman.govt.nz) [www.tasman.govt.nz](http://www.tasman.govt.nz)

*Tasman Newsline The Mag* is produced by Dry Crust Communications for Tasman District Council and is printed by Printhouse. Newsline is printed using vegetable oil-based inks, on paper produced from elemental chlorine free pulp using only farmed Eucalyptus trees in an ISO accredited mill. For advertising and editorial enquiries please contact Dry Crust Ph. 03 544 4975 or fax 03 544 4951.

**Providing professional legal assistance  
in all commercial matters, trusts, wills  
and powers of attorney**



**Fiona McConnochie**

Senior Solicitor

2 Cambridge Street  
Richmond

Ph: 03 543 8301 Fax: 03 543 8302

Email: [fiona@fvm.co.nz](mailto:fiona@fvm.co.nz)



**FLETCHER VAUTIER MOORE**  
LAWYERS

## COUNCIL MEETINGS

**Agendas and Minutes for Council Meetings can be viewed  
on Council's website at [www.tasman.govt.nz](http://www.tasman.govt.nz)**

### Council Enterprises Subcommittee

Tasman Council Chambers, 189 Queen Street, Richmond, Wednesday, 30 June 2010, 9.30 am. *No public forum*

### Full Council - Annual Plan Meeting

Tasman Council Chambers, 189 Queen Street, Richmond, Thursday, 30 June 2010, 1.30 pm or at conclusion of Council Enterprises Subcommittee.  
*No public forum*

### Environment and Planning Committee

Tasman Council Chambers, 189 Queen Street, Richmond, Thursday, 1 July 2010, 9.30 am. *Public forum*

### Environment and Planning Consents Subcommittee (H Grooby)

Motueka Office, 7 Hickmott Place, Motueka, Monday, 5 July 2010, 10.30 am.  
*No public forum*

### Communications Subcommittee

Tasman Council Chambers, 189 Queen Street, Richmond, Tuesday, 6 July 2010, 10.00 am. *No public forum*

### Engineering Services Committee

Tasman Council Chambers, 189 Queen Street, Richmond, Thursday, 8 July 2010, 9.30 am. *Public forum*

### Golden Bay Community Board

Takaka Office, Commercial Street, Takaka, Tuesday, 13 July 2010, 9.00 am.  
*Public forum*

### Motueka Community Board

Motueka Office, 7 Hickmott Place, Motueka, Tuesday, 13 July 2010, 4.30 pm.  
*Public forum*

### Community Services Committee

Tasman Council Chambers, 189 Queen Street, Richmond, Thursday, 15 July 2010, 9.30 am. *Public forum*

*Support & Respect  
through your loss*

Email: [support@wrfs.co.nz](mailto:support@wrfs.co.nz)  
Web: [www.wrfs.co.nz](http://www.wrfs.co.nz)  
Corner Salisbury &  
Champion Roads, Richmond

**544 4400**



**WAIMEA RICHMOND  
FUNERAL SERVICES**



New Zealand  
Independent  
Funeral Homes  
Member.



Alistair Ferguson (Dip FS.)

# RACE-TRACK PLANS REVVING UP

Promoters of the car-racing and motocross track near Kohatu have submitted a draft resource consent application to Tasman District Council staff to iron out potential problems.

The \$26 million Tasman Motor Sport Park is proposed to be built in stages, catering for more than a dozen user groups, including drag-racing, go-karts, offroad buggies, quadbikes and even jetski racing or jet sprints in a lake created after gravel is extracted to build the race circuit. "Peewee" youngsters will be able to hire quadbikes and minibikes.

The facility will also include a conference centre and driver training school. (The Police have expressed an interest in using the track to train their officers.)

Nelson architect David McLeod, who is driving the project on behalf of clients, says the complex is designed to be busy year-round, drawing people to the region, however it might take 15 years to complete. Once finished it will boast a bar, restaurant, 21km of mountainbike track, a confidence course, outdoor arena and a campground.

The 203ha site at Rabbit Gully, near the Kohatu Hotel, is owned by roading contractors Garry Adcock and Gary Donaldson.

Tasman District Council funded a feasibility study of the project in 2008.

David says once Council officers have provided guidance on aspects such as roading, water supply, protecting the environment etc, property neighbours will be re-approached with more precise plans. A formal resource consent will then be fleshed out.

He says the 15-20 neighbours have been "overwhelmingly supportive" of the racing track concept, but naturally are keen to see the detail of how it will affect them personally.

The track would be a club circuit initially, building up to a facility to rival Ruapuna in Christchurch. David says many motorised sport enthusiasts travel great distances to indulge their passion because there are no local facilities.

He spoke to Nelson City Councillors recently as a forerunner to a request for funding. That request will eventually be directed through the Regional Funding Forum, which encompasses both councils.



## ***Taking care of your environment***

- **Landscaping** - Residential and corporate design and construction
- **Tree Services** - Smart tree solutions from qualified arborists
- **Garden Maintenance** - All aspects of property care
- **Turf Services** - Lawn mowing, establishment and renovation
- **Carpentry and Light Mechanical Engineering**
- **Water Pipe Tracing and Leak Detection**
- **Rubbish Collection** - Richmond Urban areas only

**03 546 0910**

[www.nelmac.co.nz](http://www.nelmac.co.nz)

