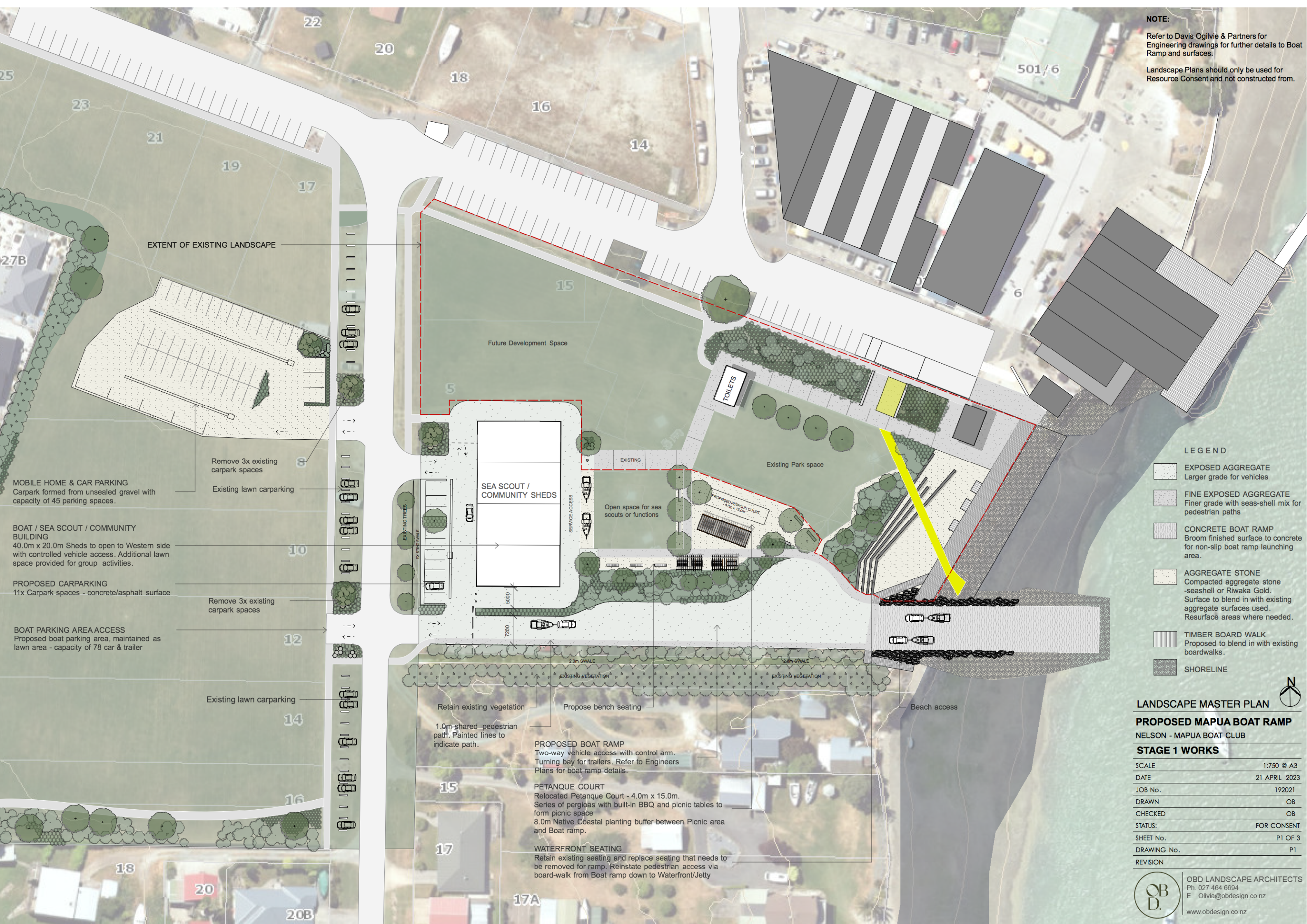


**NOTE:**  
Refer to Davis Ogilvie & Partners for Engineering drawings for further details to Boat Ramp and surfaces.  
Landscape Plans should only be used for Resource Consent and not constructed from.



**EXTENT OF EXISTING LANDSCAPE**

**MOBILE HOME & CAR PARKING**  
Carpark formed from unsealed gravel with capacity of 45 parking spaces.

**BOAT / SEA SCOUT / COMMUNITY BUILDING**  
40.0m x 20.0m Sheds to open to Western side with controlled vehicle access. Additional lawn space provided for group activities.

**PROPOSED CARPARKING**  
11x Carpark spaces - concrete/asphalt surface

**BOAT PARKING AREA ACCESS**  
Proposed boat parking area, maintained as lawn area - capacity of 78 car & trailer

Remove 3x existing carpark spaces

Existing lawn carparking

Remove 3x existing carpark spaces

Existing lawn carparking

**SEA SCOUT / COMMUNITY SHEDS**

Open space for sea scouts or functions

**PROPOSED PETANQUE COURT**  
4.0m x 15.0m

**PROPOSED BOAT RAMP**  
Two-way vehicle access with control arm. Turning bay for trailers. Refer to Engineers Plans for boat ramp details.

**PETANQUE COURT**  
Relocated Petanque Court - 4.0m x 15.0m. Series of pergolas with built-in BBQ and picnic tables to form picnic space  
8.0m Native Coastal planting buffer between Picnic area and Boat ramp.

**WATERFRONT SEATING**  
Retain existing seating and replace seating that needs to be removed for ramp. Reinstate pedestrian access via board-walk from Boat ramp down to Waterfront/Jetty

EXISTING VEGETATION

2.0m SWALE

2.0m SWALE

EXISTING TREES

EXISTING SWALE

SERVICE ACCESS

TOILETS

Beach access

- LEGEND**
- EXPOSED AGGREGATE  
Larger grade for vehicles
  - FINE EXPOSED AGGREGATE  
Finer grade with seas-shell mix for pedestrian paths
  - CONCRETE BOAT RAMP  
Broom finished surface to concrete for non-slip boat ramp launching area.
  - AGGREGATE STONE  
Compacted aggregate stone -seashell or Riwaka Gold. Surface to blend in with existing aggregate surfaces used. Resurface areas where needed.
  - TIMBER BOARD WALK  
Proposed to blend in with existing boardwalks.
  - SHORELINE

**LANDSCAPE MASTER PLAN**

**PROPOSED MAPUA BOAT RAMP**  
NELSON - MAPUA BOAT CLUB

**STAGE 1 WORKS**

SCALE	1:750 @ A3
DATE	21 APRIL 2023
JOB No.	192021
DRAWN	OB
CHECKED	OB
STATUS:	FOR CONSENT
SHEET No.	P1 OF 3
DRAWING No.	P1
REVISION	

**NOTE:**  
Refer to Davis Ogilvie & Partners for Engineering drawings for further details to Boat Ramp and surfaces.  
Landscape Plans should only be used for Resource Consent and not constructed from.

Landscape Plans should only be used for Resource Consent and not constructed from.

**FUTURE DEVELOPMENT AREA**  
Proposed event and gathering space. Space to provide terraced seating with Sculptural Rotunda for performances/events.  
Coastal native planting to provide planting buffer from road and provide wind protection.  
Proposed area indicative and to be further developed in future stage. Proposed design to show how Stage 1 can be built into future development plans

**MOBILE HOME & CAR PARKING**  
Carpark formed from unsealed gravel with capacity of 45 parking spaces.

**BOAT / SEA SCOUT / COMMUNITY BUILDING**  
40.0m x 20.0m Sheds to open to Western side with controlled vehicle access. Additional lawn space provided for group activities.

**PROPOSED CARPARKING**  
11x Carpark spaces - concrete/asphalt surface

**BOAT PARKING AREA ACCESS**  
Proposed boat parking area, maintained as lawn area - capacity of 78 car & trailer

Remove 3x existing carpark spaces

Existing lawn carparking

Remove 3x existing carpark spaces

Existing lawn carparking

TAHI STREET

Sea Scout / Community Building

Open space for sea scouts or functions

TOILETS

Existing Park space

PROPOSED PETANQUE COURT  
4.0m x 15.0m

Retain existing vegetation  
1.0m shared pedestrian path. Painted lines to indicate path.

Propose bench seating

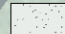
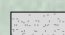
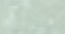
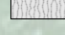
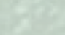
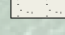
**PROPOSED BOAT RAMP**  
Two-way vehicle access with control arm. Turning bay for trailers. Refer to Engineers Plans for boat ramp details.

**PETANQUE COURT**  
Relocated Petanque Court - 4.0m x 15.0m. Series of pergolas with built-in BBQ and picnic tables to form picnic space  
8.0m Native Coastal planting buffer between Picnic area and Boat ramp.

**WATERFRONT SEATING**  
Retain existing seating and replace seating that needs to be removed for ramp. Reinstate pedestrian access via board-walk from Boat ramp down to Waterfront/Jetty

Beach access

**LEGEND**

-  **EXPOSED AGGREGATE**  
Larger grade for vehicles
-  **FINE EXPOSED AGGREGATE**  
Finer grade with seas-shell mix for pedestrian paths
-  **CONCRETE BOAT RAMP**  
Broom finished surface to concrete for non-slip boat ramp launching area.
-  **AGGREGATE STONE**  
Compacted aggregate stone -seashell or Riwaka Gold. Surface to blend in with existing aggregate surfaces used. Resurface areas where needed.
-  **TIMBER BOARD WALK**  
Proposed to blend in with existing boardwalks.
-  **SHORELINE**

**LANDSCAPE MASTER PLAN  
PROPOSED MAPUA BOAT RAMP  
NELSON - MAPUA BOAT CLUB  
STAGE 2 FUTURE DEVELOPMENT**

SCALE	1:750 @ A3
DATE	21 APRIL 2023
JOB No.	192021
DRAWN	OB
CHECKED	OB
STATUS:	FOR CONSENT
SHEET No.	P2 OF 3
DRAWING No.	P2
REVISION	

**OB D.** LANDSCAPE ARCHITECTS  
Ph. 027 464 6694  
E. Olivia@obdesign.co.nz  
www.obdesign.co.nz

**NOTE:**  
 Refer to Davis Ogilvie & Partners for Engineering drawings for further details to Boat Ramp and surfaces.  
 Landscape Plans should only be used for Resource Consent and not constructed from.

BOUNDARY OF RETAINED EXISTING LANDSCAPE

Remove 3x existing carpark spaces

**PROPOSED CARPARKING**  
 11x Carpark spaces - concrete/asphalt surface

Existing lawn carparking

**BOAT / SEA SCOUT / COMMUNITY BUILDINGS**  
 40.0m x 20.0m Sheds to open to Western side with controlled vehicle access. Additional lawn space provided for group activities.

Remove 3x existing carpark spaces



**LANDSCAPE MASTER PLAN**

**PROPOSED MAPUA BOAT RAMP**

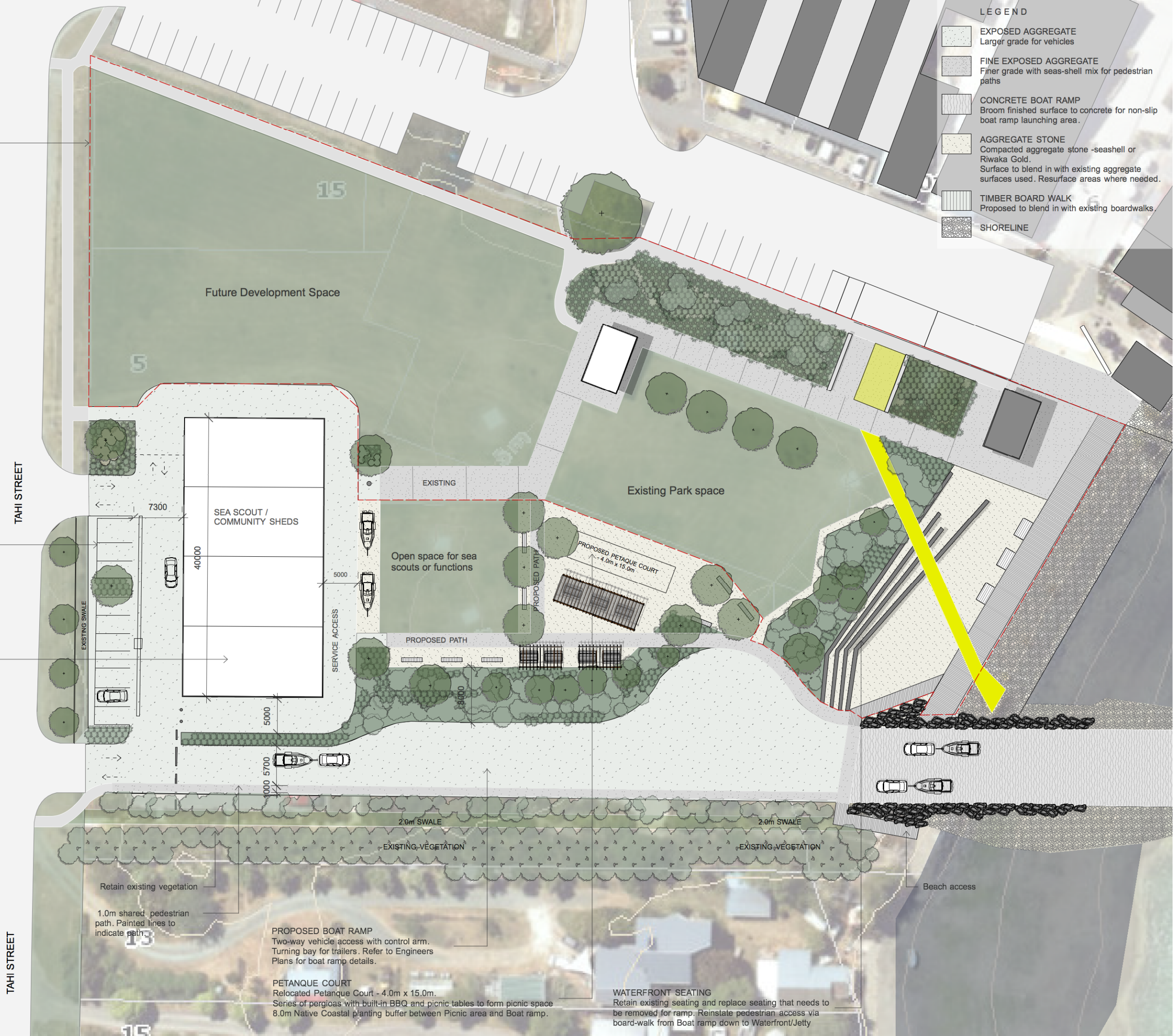
NELSON - MAPUA BOAT CLUB

**STAGE 1 LANDSCAPE**

SCALE	1:500 @ A3
DATE	21 APRIL 2023
JOB No.	192021
DRAWN	OB
CHECKED	OB
STATUS:	FOR CONSENT
SHEET No.	P3 OF 3
DRAWING No.	P3
REVISION	

**OBD LANDSCAPE ARCHITECTS**  
 Ph. 027 464 6694  
 E. Olivia@obdesign.co.nz  
 www.obdesign.co.nz

- LEGEND**
- EXPOSED AGGREGATE  
Larger grade for vehicles
  - FINE EXPOSED AGGREGATE  
Finer grade with seas-shell mix for pedestrian paths
  - CONCRETE BOAT RAMP  
Broom finished surface to concrete for non-slip boat ramp launching area.
  - AGGREGATE STONE  
Compacted aggregate stone -seashell or Riwaka Gold.  
Surface to blend in with existing aggregate surfaces used. Resurface areas where needed
  - TIMBER BOARD WALK  
Proposed to blend in with existing boardwalks.
  - SHORELINE



TAHI STREET

Retain existing vegetation

1.0m shared pedestrian path. Painted lines to indicate path.

**PROPOSED BOAT RAMP**  
 Two-way vehicle access with control arm. Turning bay for trailers. Refer to Engineers Plans for boat ramp details.

**PETAQUE COURT**  
 Relocated Petaque Court - 4.0m x 15.0m. Series of pergolas with built-in BBQ and picnic tables to form picnic space. 8.0m Native Coastal planting buffer between Picnic area and Boat ramp.

**WATERFRONT SEATING**  
 Retain existing seating and replace seating that needs to be removed for ramp. Reinstate pedestrian access via board-walk from Boat ramp down to Waterfront/Jetty