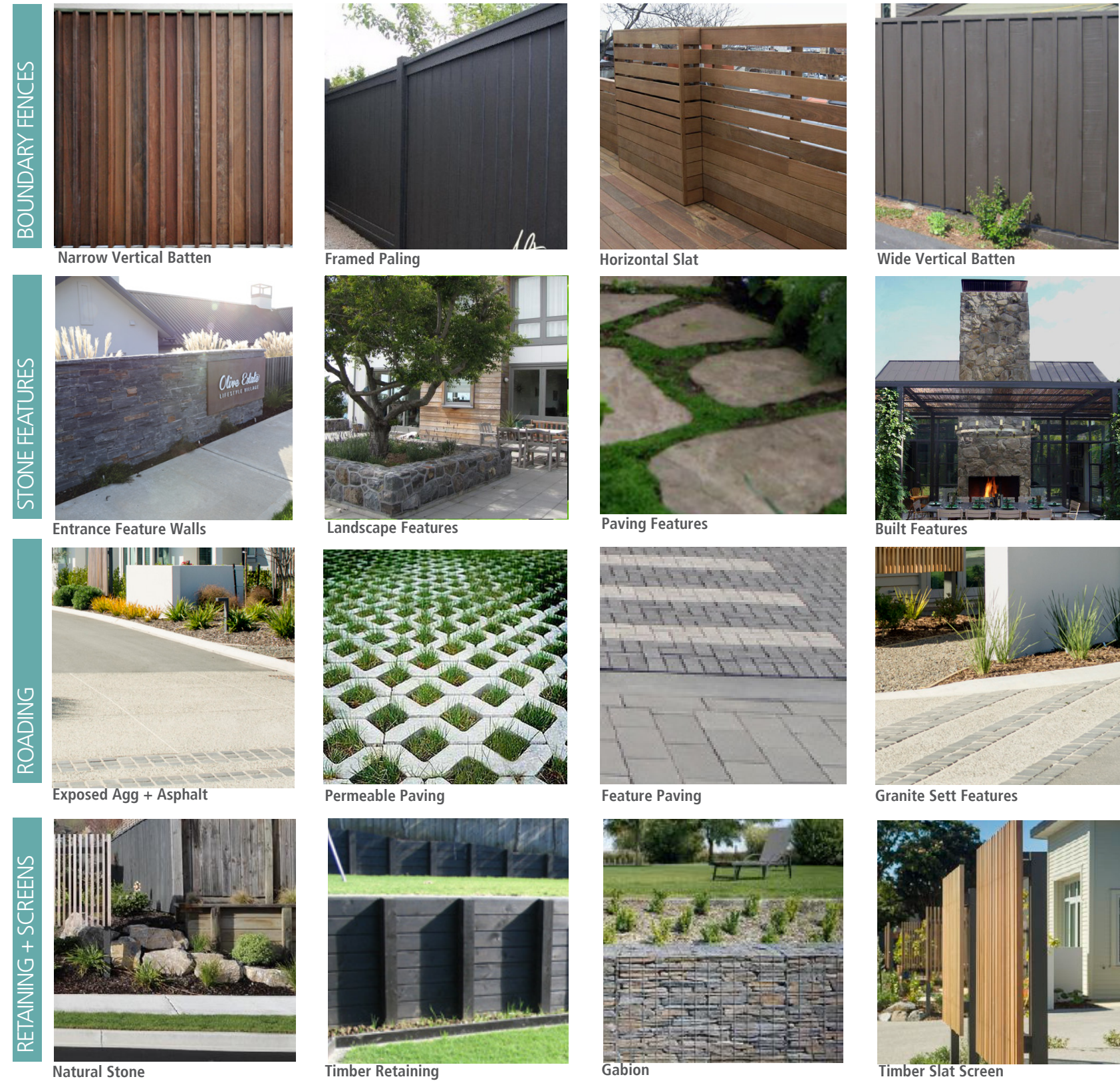


4.0 MATERIALS & PLANTING

4.1 OVERALL SITE MATERIALS



SITE MATERIALS

BOUNDARY FENCES

Pinus radiata timber fencing with a variety of styles. Plywood fence with narrow and wide vertical timber battens, framed timber paling fence, and horizontal timber slat fence styles. Timber stained charcoal tones or warm timber tones. Fencing to be 1.6m - 1.8m high around boundary.

STONE

Natural stone used as a feature in entrance walls, landscape and built elements, and paving

ROADING

Asphalt roadway with exposed aggregate or paved threshold zones. Granite sett strips used as feature and traffic calming.

RETAINING

Options for retaining include timber T & G with square post stained dark, stone filled gabion baskets, or natural rock.

UTILITY SCREENS

Pinus radiata timber slat screens provide screening measure in bin/utility areas. Stained dark or natural warm timber tones.

Superseded
Refer changes received
18 Sep 2020

4.0 MATERIALS & PLANTING

4.2 OPEN SPACE MATERIALS



Community Gardens



Petanque + Chip & Putt



Outdoor Exercise



Amphitheatre



Grandkids Playground



Radio controlled yachts



Street Lighting
Note: All Street lighting within the development to comply with the current regulations outlined in the TRMP



Bollards



Outdoor Seating



Rubbish Bins



Concrete



Gravel



Timber Boardwalks



Exposed Agg + Paving

OPEN SPACE MATERIALS

ACTIVITIES

There are many activities proposed within Olive Estate including outdoor exercise stations, small grand children's playground, an outdoor kitchen, petanque area, bowls and croquet lawn, informal amphitheatre, and community garden and orchards. This activity nodes will be spread throughout the site as part of the open space network. Particular activities will be concentrated in specific areas to encourage movement between spaces.

OUTDOOR FURNITURE

Outdoor furniture including street lighting, bollard lighting, feature lighting, bollards, seating, rubbish bins, and water drinking stations

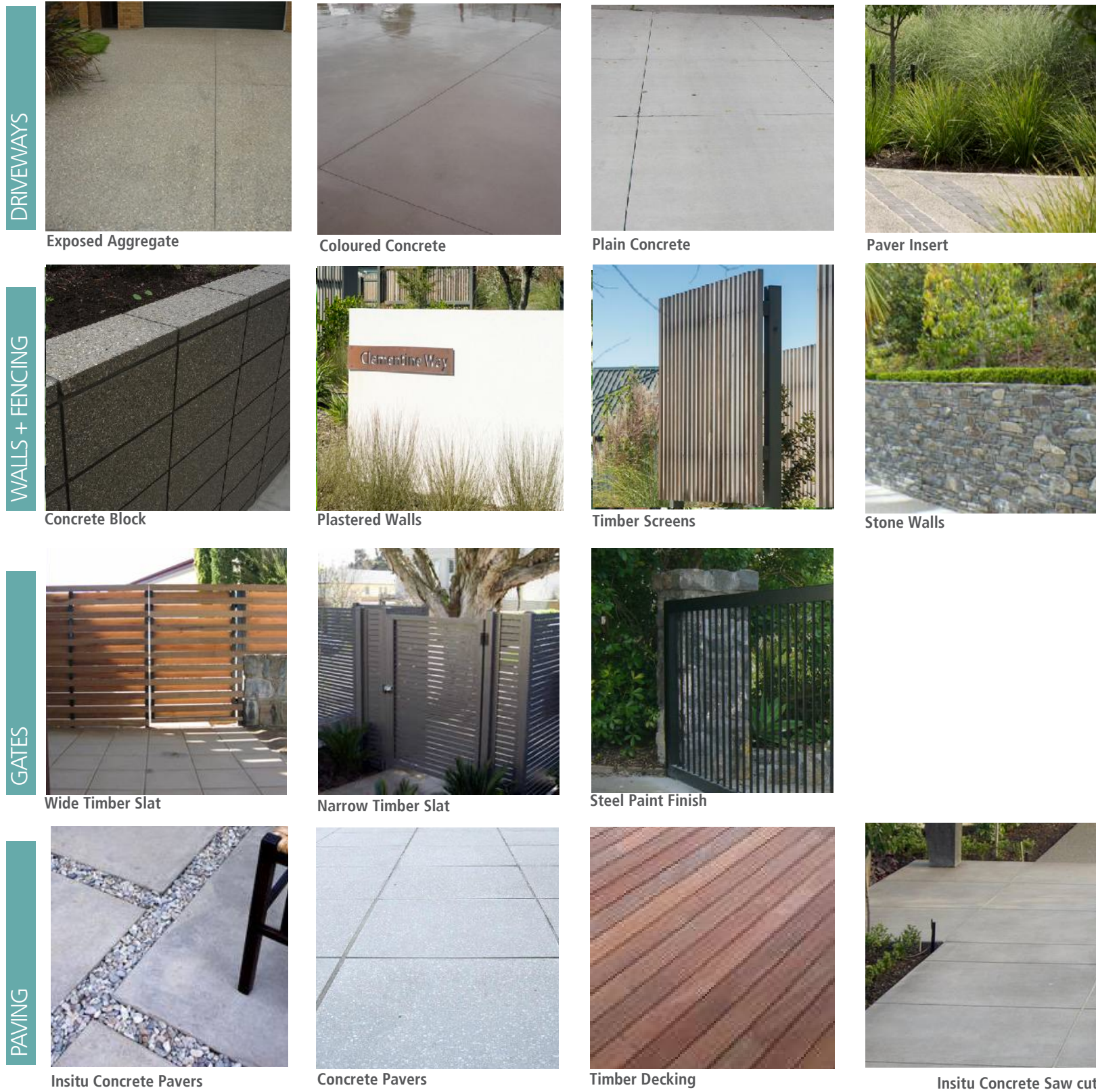
PEDESTRIAN PATHS + PAVING AREAS

Options for pedestrian paths include concrete footpaths, gravel nature paths, timber boardwalks, and footpaths with exposed aggregate finishes. Paving in open spaces areas will include compacted gravel, timber decking, concrete pavers, and insitu concrete with various finishes.

Superseded
Refer changes received
18 Sep 2020

4.0 MATERIALS & PLANTING

4.3 PRIVATE SPACE MATERIALS



PRIVATE UNIT MATERIALS

DRIVEWAY

A mix of driveways to create diversity including exposed aggregate, coloured concrete, plain concrete, and an option for a paver insert.

WALLS + FENCES

Internal walls and fences to create privacy, and mark entrance paths include concrete bloc, plastered walls, timber screens, and stone walls.

GATES

Gates where required for privacy or security include narrow and wide timber slat and steel powder coated finish gates

PAVING

Paving finishes for outdoor entertainment areas include Insitu concrete with various finishes including large format pavers, saw cut patterns, plain or coloured, timber decking, and concrete pavers.

Superseded
Refer changes received
18 Sep 2020

4.0 MATERIALS & PLANTING

4.4 STREET TREE PALETTE



Option 1 - Ulmus 'Frontier'



Option 2 - Pyrus cal. 'Candelabra' - Upright Pear



Option 1 - Pyrus cal. 'Candelabra' - Upright Pear



Option 2 - Fraxinus 'Purple Spire' - Purple Ash



Option 1 - Knightia excelsa - Rewarewa



Option 2 - Ginkgo 'Jade Butterfly'



Option 3 - Magnolia denudata



Option 4 - Olea 'Frantoio' - Olive Tree

ORCHARD TREE PALETTE



Peach 'White Princess'



Olive frantoio



Pear 'Beurre Hardy'



Citrus Lemon Meyer & Lemonade



Apple Purple Spire



Cherry Compact Stella



Feijoa Unique



Plum hawera

Superseded
Refer changes received
18 Sep 2020

4.0 MATERIALS & PLANTING

4.5 RIPARIAN PALETTE

TREES



Vitex lucens - Puriri



Alectryon excelsus - Titoki



Knightia excelsa - Rewarewa



Kunzea 'Awanui' - Kanuka (Groves)



Sophora microphylla - Kowhai



Podocarpus totara



Plagianthus regius - Ribbonwood



Dacrydium cupressinum - Rimu

SHRUBS



Dianella nigra



Leptocarpus similis - Oioi



Cabbage Tree (Groups)



Carex virgata



Phormium cookianum



Muehlenbeckia complexa



Baumea juncea



Chinochloa flavicans



Cordarteria - Toetoe



Coprosma virescens



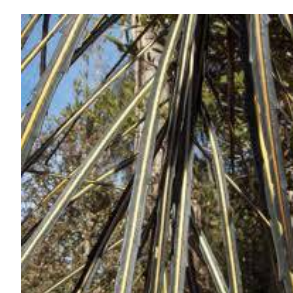
Coprosma crassifolius



Machaerina sinclairii



Carex flag. Green



Lancewood (Groups)



Muehlenbeckia astonii



Chinochloa rubra

Superseded
Refer changes received
18 Sep 2020

4.0 MATERIALS & PLANTING

4.6 PARK PALETTE



Superseded
 Refer changes received
 18 Sep 2020

4.0 MATERIALS & PLANTING

4.7 PRIVATE PALETTE 1

TREES



Ginkgo 'Jade Butterfly'



Cercis 'Forest pansy'



Gleditsia 'Sunburst'



Knightia excelsa - Rewarewa



Alectryon excelsus - Titoki



Sophora microphylla - Kowhai



Olea 'Frantoio Olive Tree'



Pseudopanax crassifolius - Lancewood

SHRUBS



Prostrate Kowhai



Ligularia 'Britt Marie Crawford'



Totara Hedge



Iris 'Caesar's brother'



Hebe Mrs Winder



Griselinia littoralis



Hebe Black Panther



Corokia totara



Muehlenbeckia complexa



Libertia perigrinis



Lomandra 'Little pal'



Phormium cookianum 'Dwarf'



Leptocarpus similis - Oioi



Geranium Pink Spice



Muehlenbeckia astonii



Purple Salvia

4.0 MATERIALS & PLANTING

4.8 PRIVATE PALETTE 2

TREES



Lagerstromeria faurieri White Crepe Myrtle



Plagianthus regius - Ribbonwood



Pseudopanax crassifolius - Lancewood



Michelia Lemon Fragrant & Gracipes



Magnolia 'Little Gem'



Kunzea 'Awanui' - Kanuka



Olea 'Frantoio Olive Tree



Alectryon excelsus - Titoki

SHRUBS



Dianella 'Breeze'



Rhodo 'Pawhuska'



Totara Hedge



Hebe 'Wiri Mist'



Corokia 'Silver Ghost'



Griselinia littoralis



Star Jasmine



Coprosma 'Red Rocks'



Libertia grandiflora



Marlborough Rock Daisy



Lomandra 'Little pal'



Pimelia prostrata



Leptocarpus similis - Oioi



Daphne odora alba



Muehlenbeckia astonii



Dietes grandiflora

5.0 HILL STREET RENDERS

5.1 RENDER VIEW 1



RM190790 and ors - Integrity Care Group Ltd - Master Plans (these Rev 03 replaced the 'as lodged' version) dated 4 Mar 2020 p41

5.0 HILL STREET RENDERS

5.2 RENDER VIEW 2



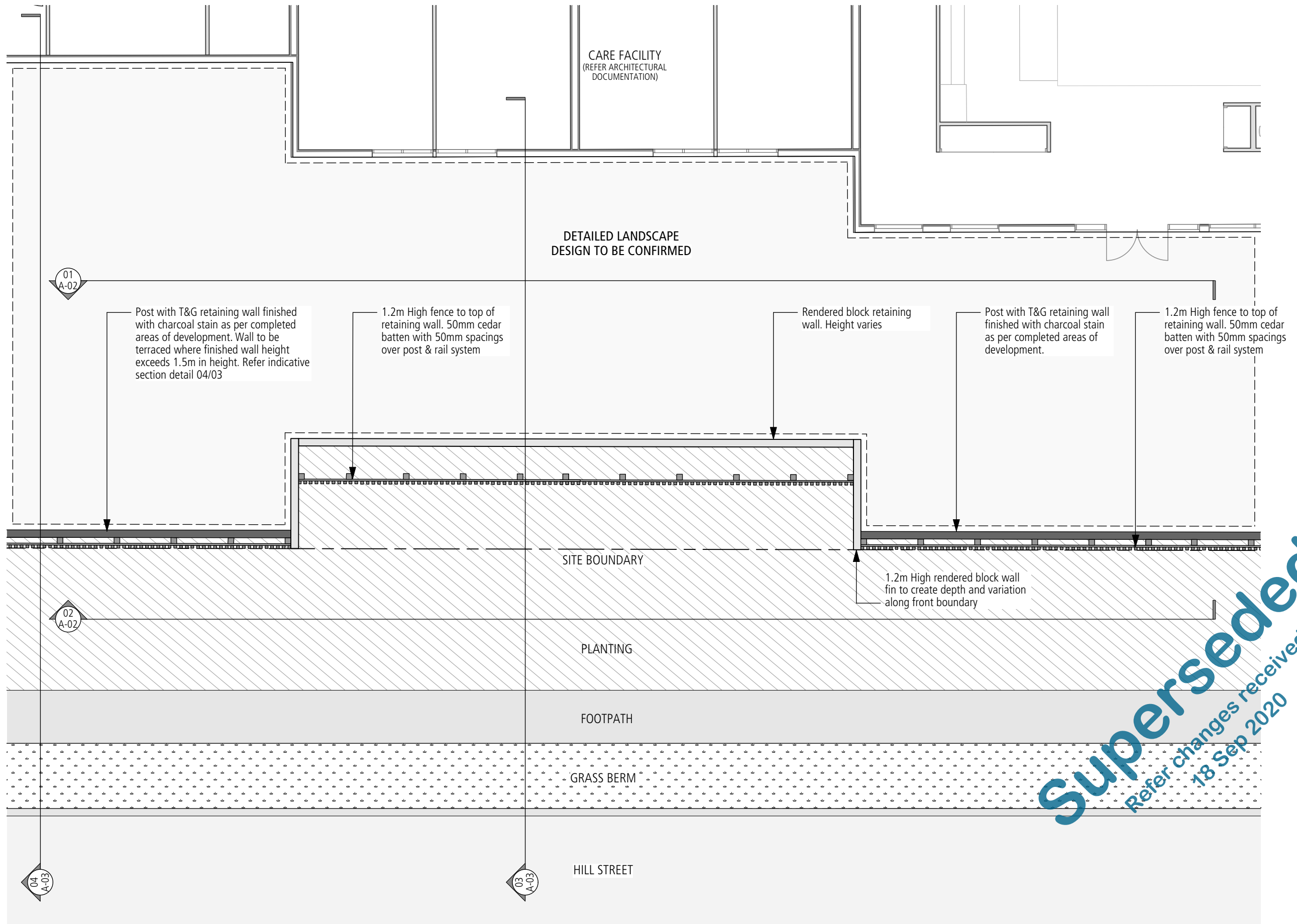
RM190790 and ors - Integrity Care Group Ltd - Master Plans (these Rev 03 replaced the 'as lodged' version) dated 4 Mar 2020 p42

5.0 HILL STREET RENDERS

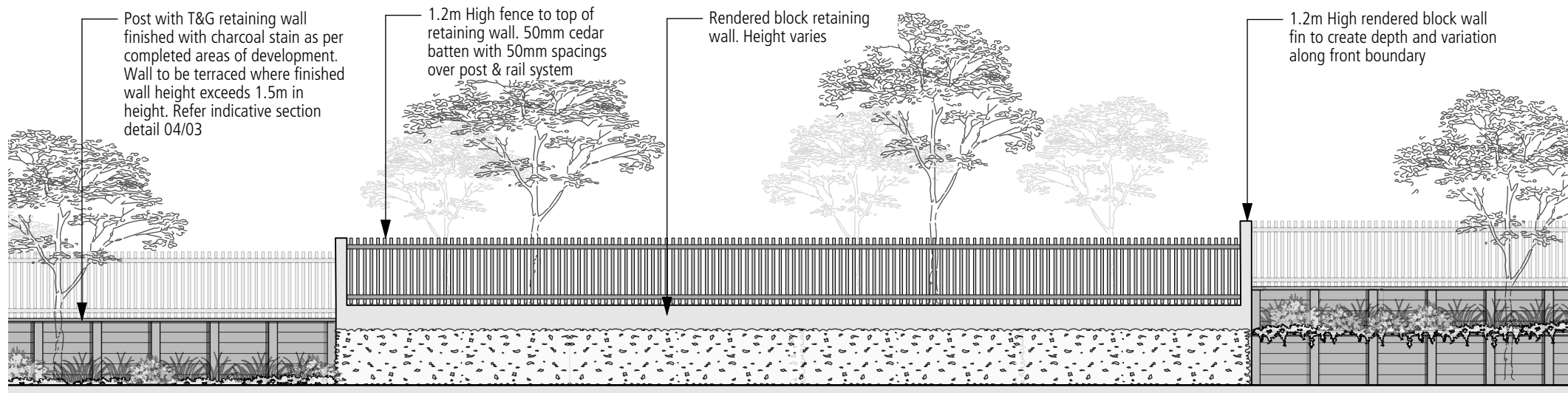
5.3 RENDER VIEW 3



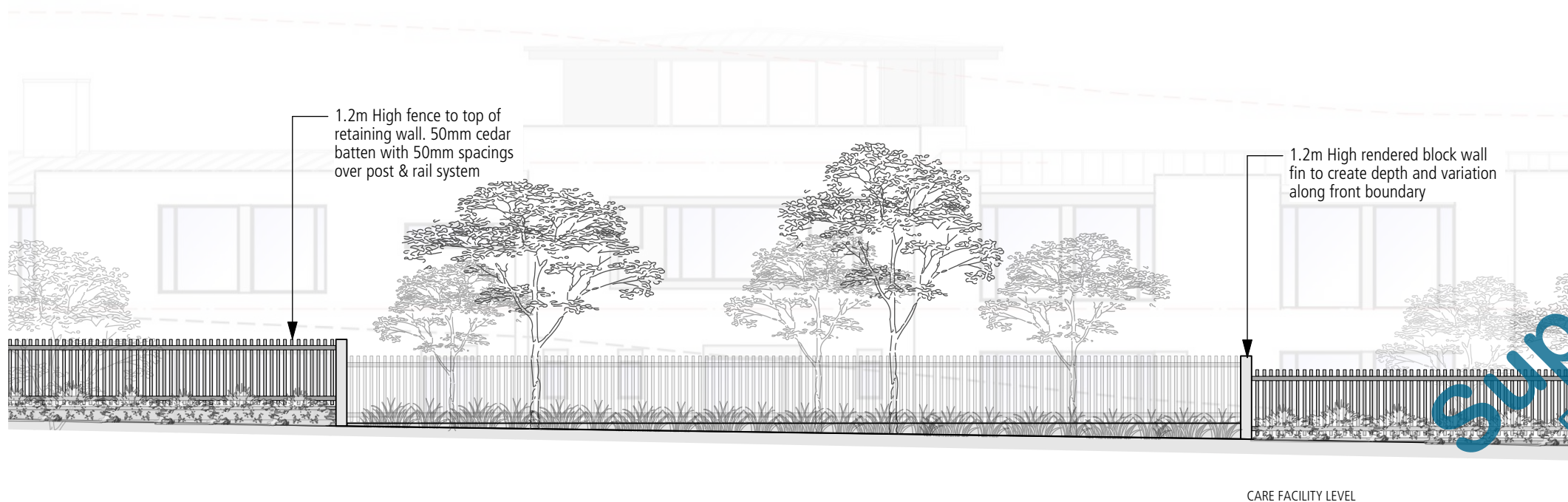
RM190790 and ors - Integrity Care Group Ltd - Master Plans (these Rev 03 replaced the 'as lodged' version) dated 4 Mar 2020 p43



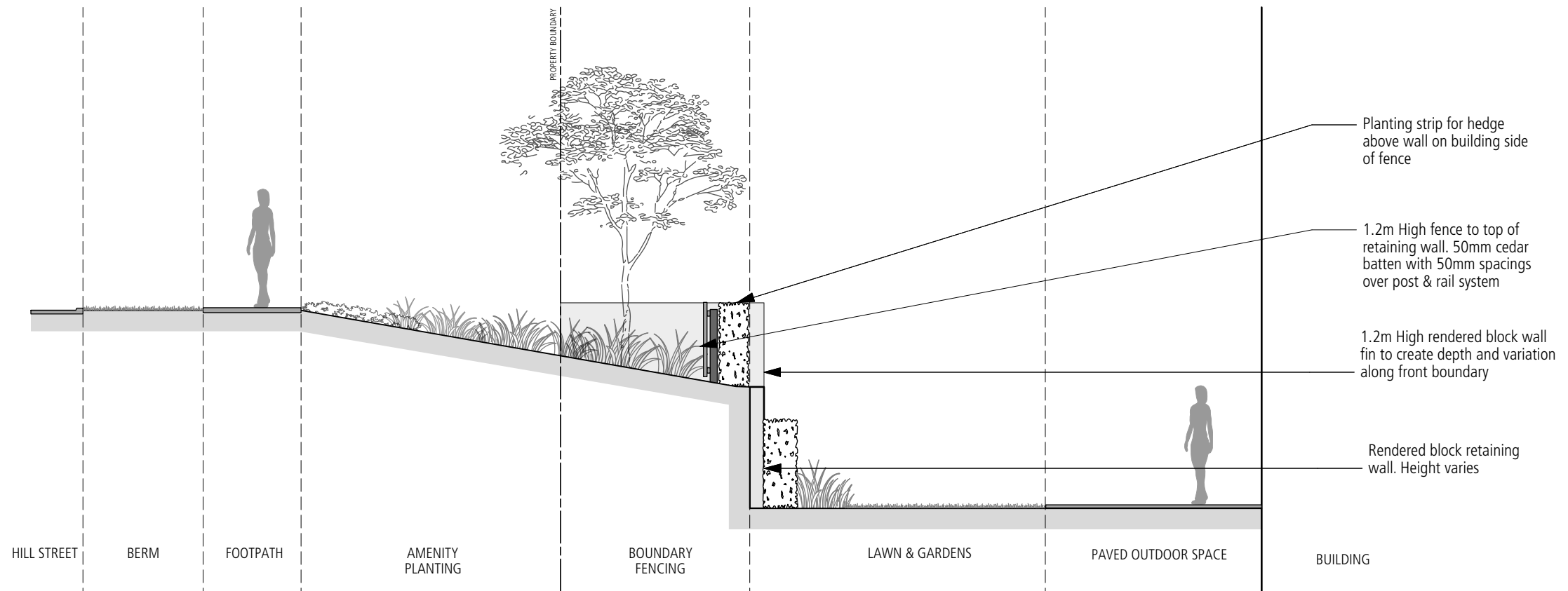
Superseded
Refer changes received
18 Sep 2020



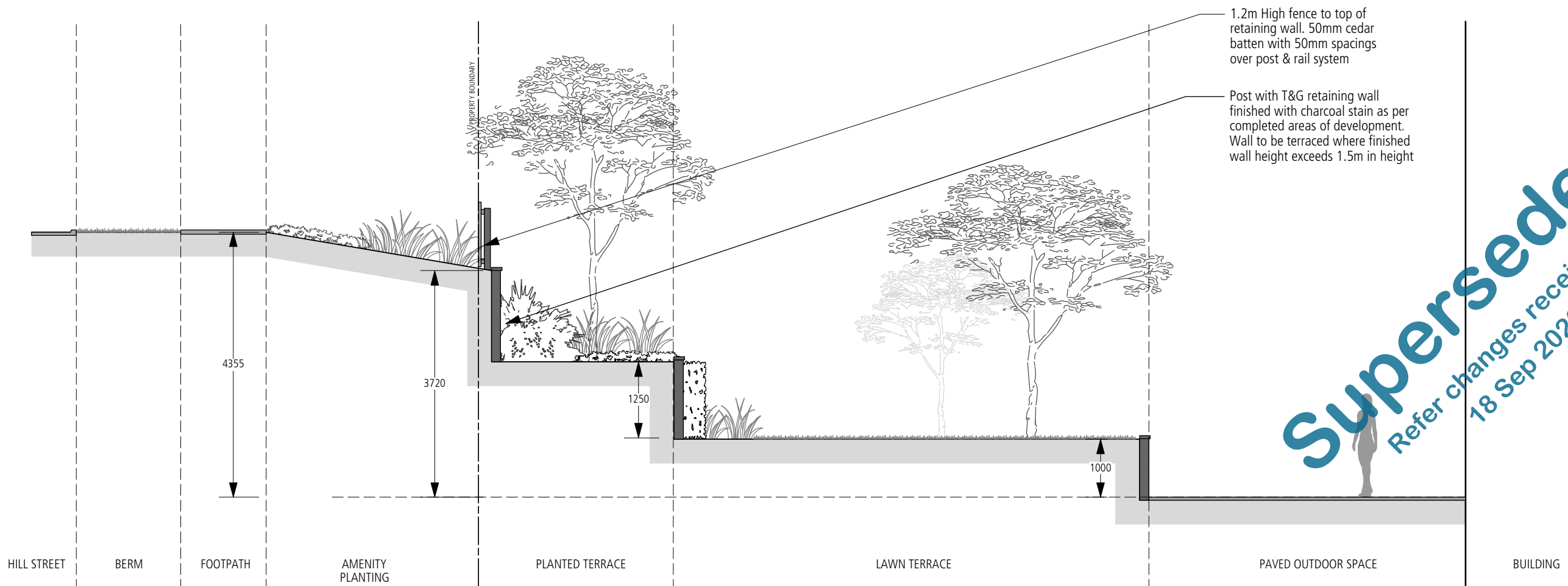
0.1 - NORTHERN ELEVATION - 1:100 @ A3



0.2 - HILL STREET ELEVATION - 1:100 @ A3



03 - TYPICAL SECTION BLOCK RETAINING - 1:75 @ A3



04 - TYPICAL SECTION TIMBER RETAINING - 1:75 @ A3

Superseded
 Refer changes received
 18 Sep 2020